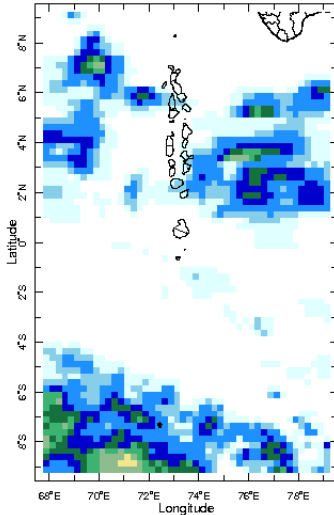


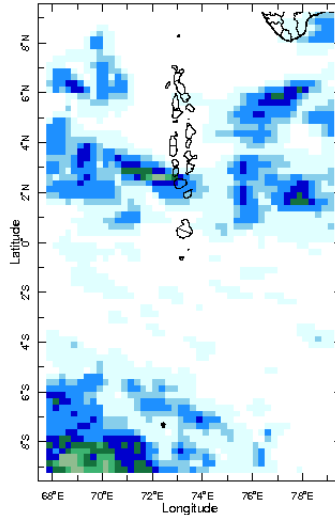


**Daily Rainfall Monitoring**

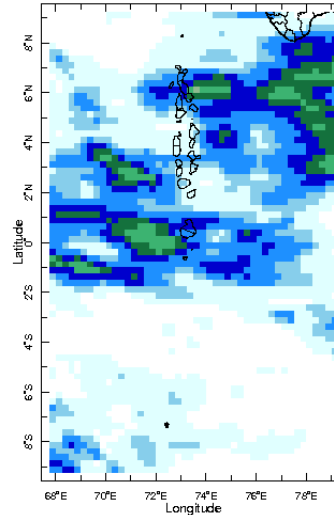
The following figures show the observed rainfall in the last 15 days in Maldives.



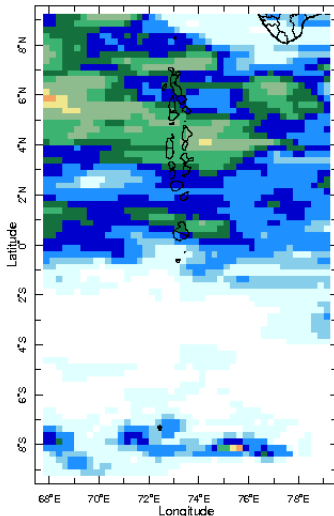
2 Jan 2021



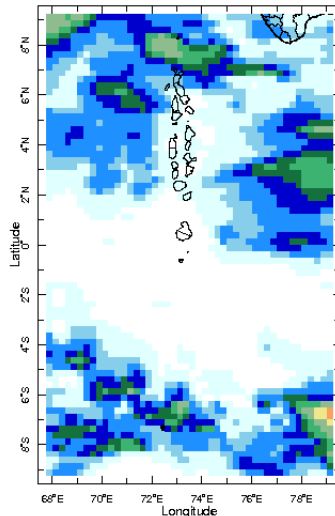
3 Jan 2021



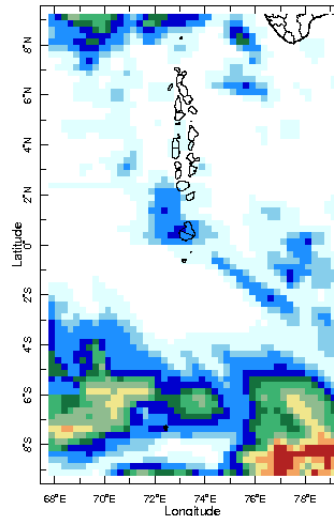
4 Jan 2021



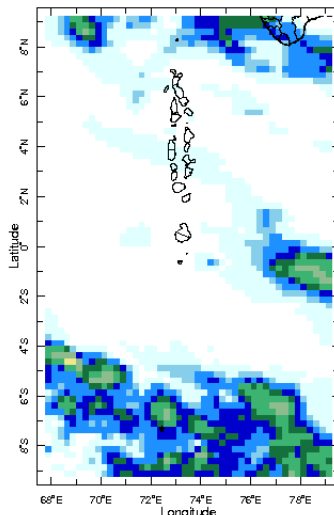
5 Jan 2021



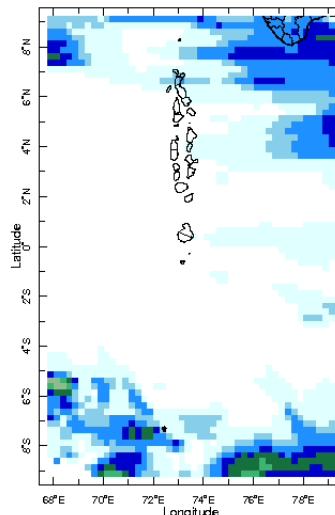
6 Jan 2021



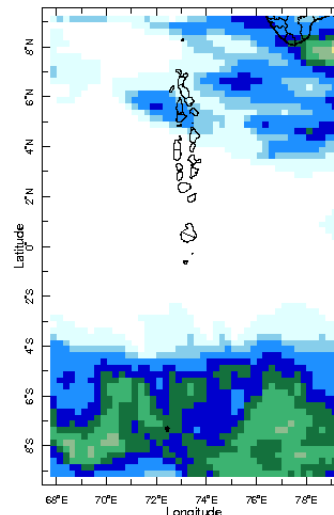
7 Jan 2021



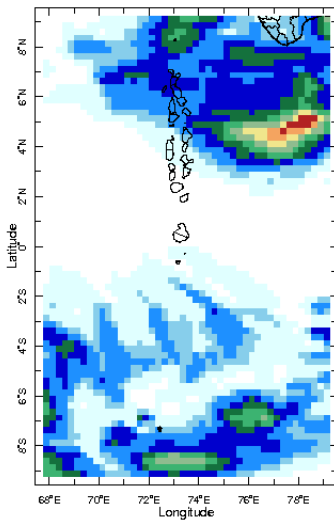
8 Jan 2021



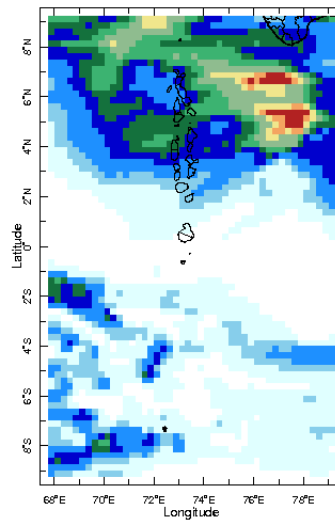
9 Jan 2021



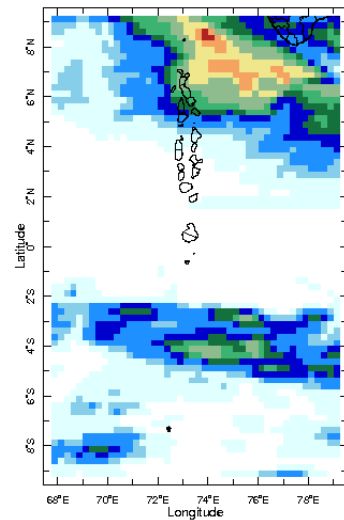
10 Jan 2021



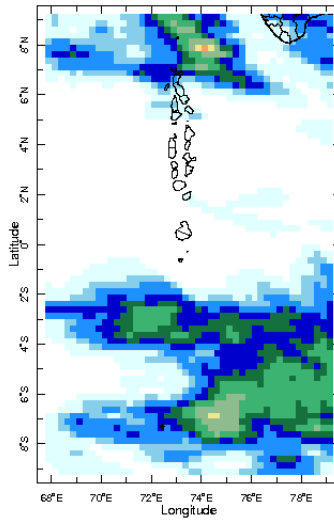
11 Jan 2021



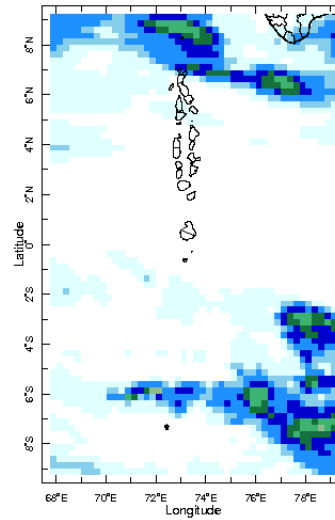
12 Jan 2021



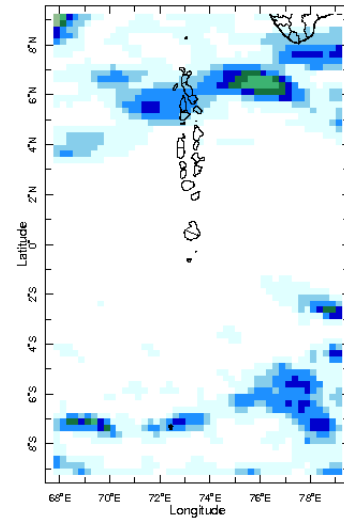
13 Jan 2021



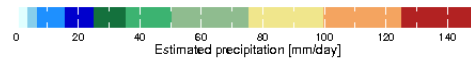
14 Jan 2021



15 Jan 2021

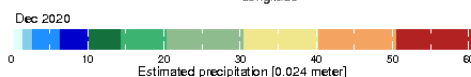
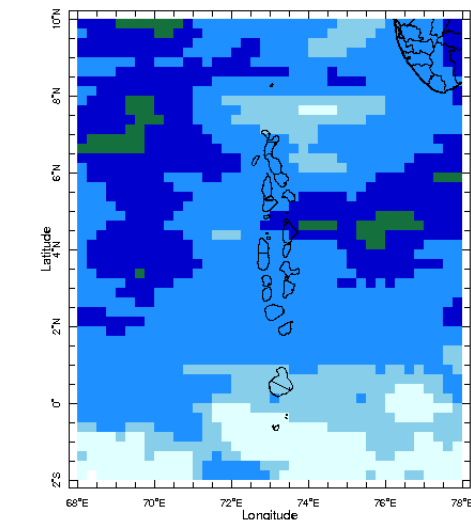


16 Jan 2021



## Monthly Rainfall Monitoring

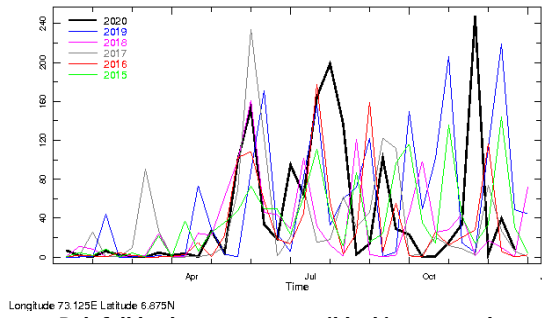
The figure shows the average observed rainfall in the previous month.



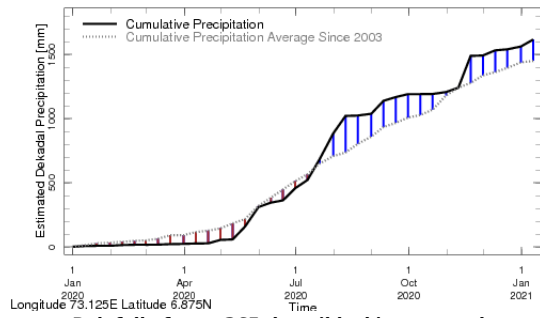
Monthly Average

# Monthly and Seasonal Monitoring

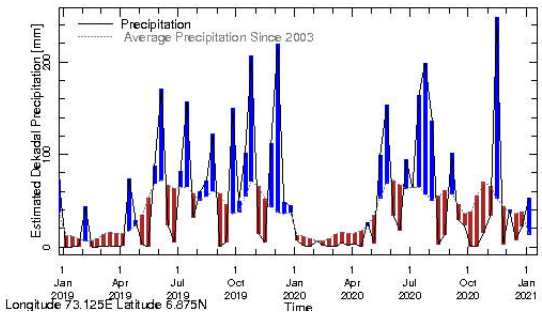
## Northern Maldives:



Longitude 73.125E Latitude 6.875N  
**Rainfall in the current year (black) compared to rainfall in previous 5 years**

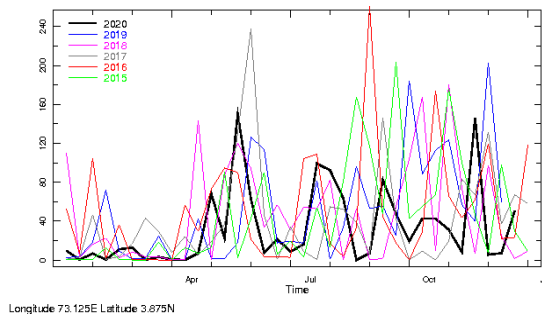


Longitude 73.125E Latitude 6.875N  
**Rainfall of past 365 days (black) compared to average rainfall since 2003.**

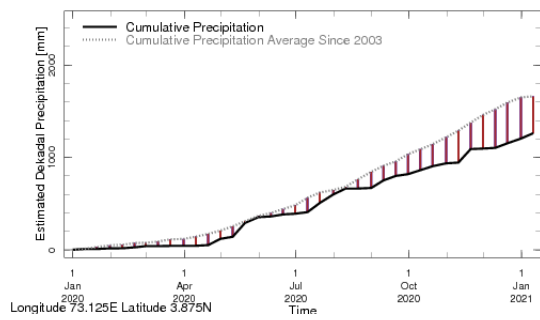


Longitude 73.125E Latitude 6.875N  
**Rainfall in the past 5 years with above-average rainfall hatched in blue and below-average hatched in brown**

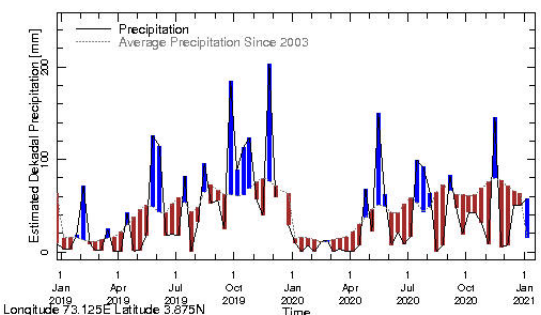
## Central Maldives:



Longitude 73.125E Latitude 3.875N  
**Rainfall in the current year (black) compared to rainfall in previous 5 years**

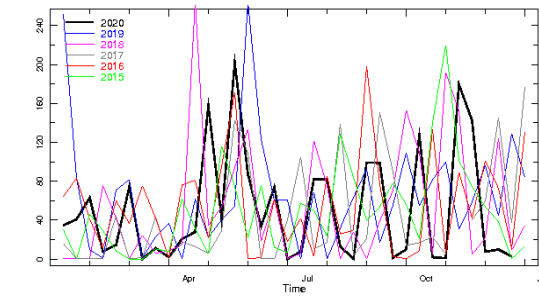


Longitude 73.125E Latitude 3.875N  
**Rainfall of past 365 days (black) compared to average rainfall since 2003.**

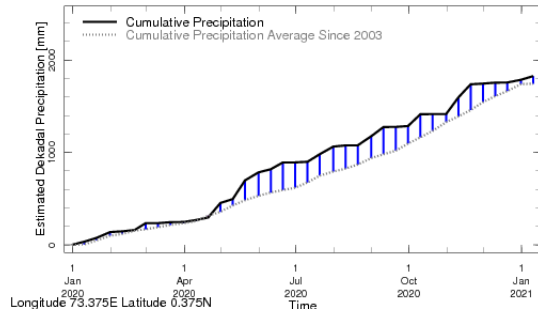


Longitude 73.125E Latitude 3.875N  
**Rainfall in the past 5 years with above-average rainfall hatched in blue and below-average hatched in brown**

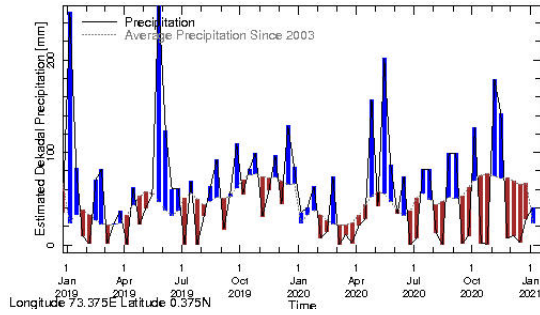
## Southern Maldives:



Longitude 73.375E Latitude 0.375N  
**Rainfall in the current year (black) compared to rainfall in previous 5 years**

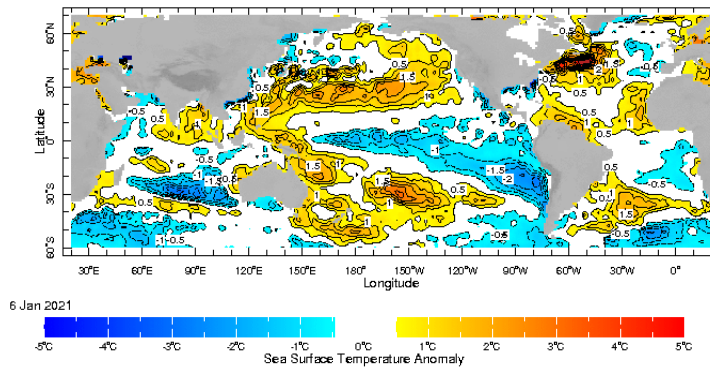


Longitude 73.375E Latitude 0.375N  
**Rainfall of past 365 days (black) compared to average rainfall since 2003.**



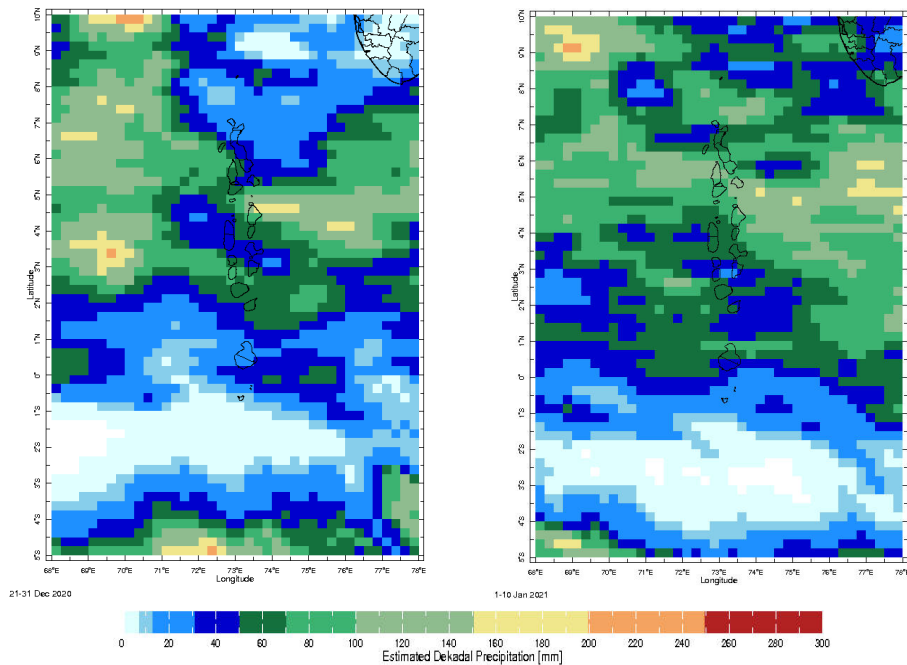
Longitude 73.375E Latitude 0.375N  
**Rainfall in the past 5 years with above-average rainfall hatched in blue and below-average hatched in brown**

## Ocean Surface Monitoring



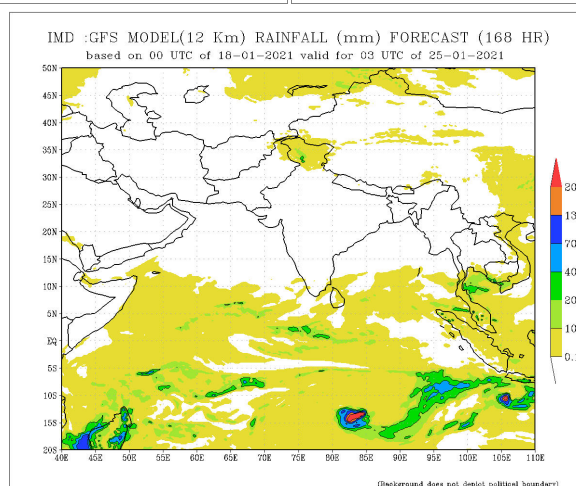
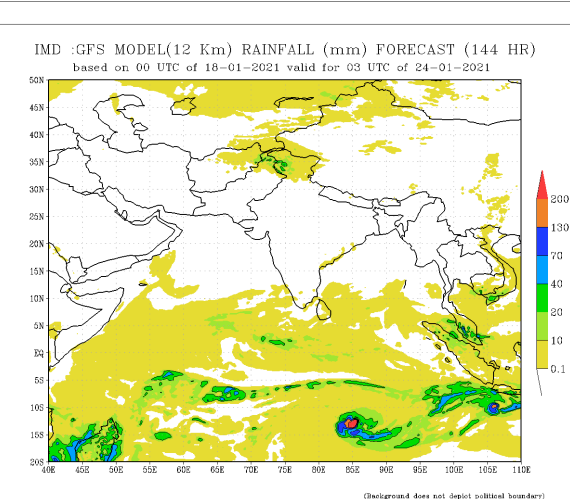
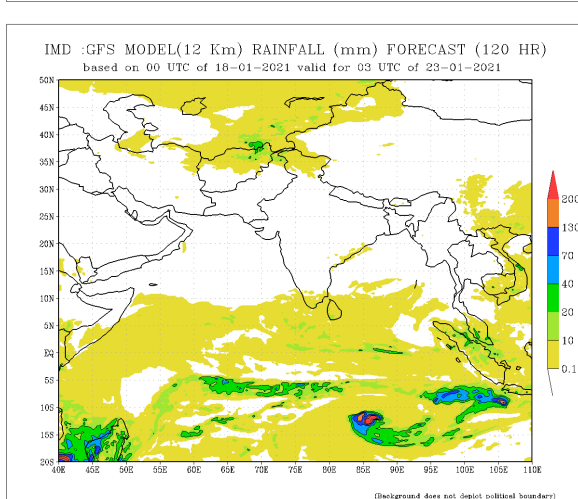
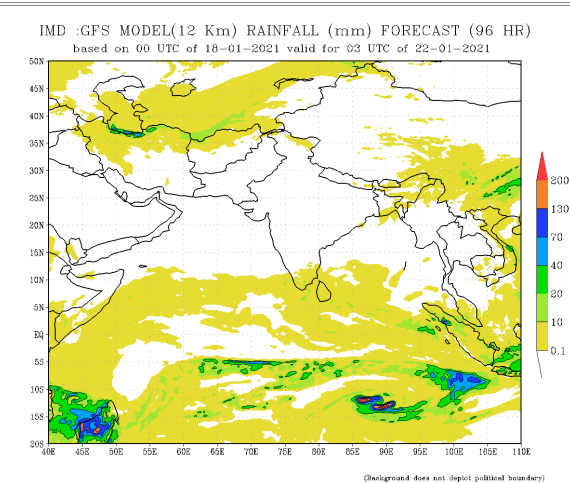
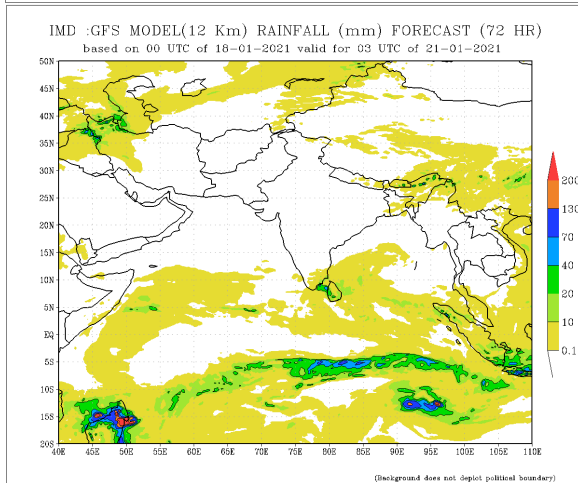
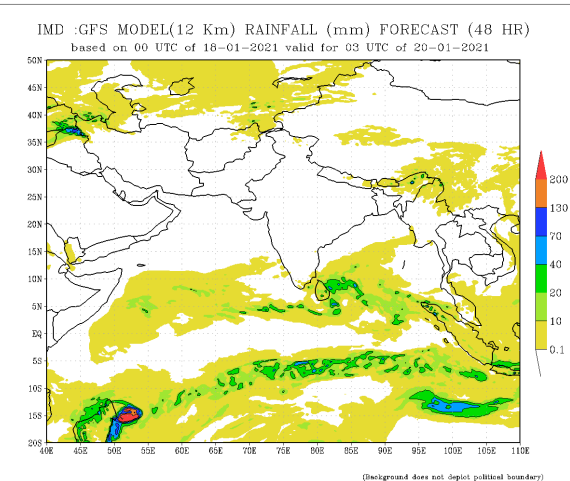
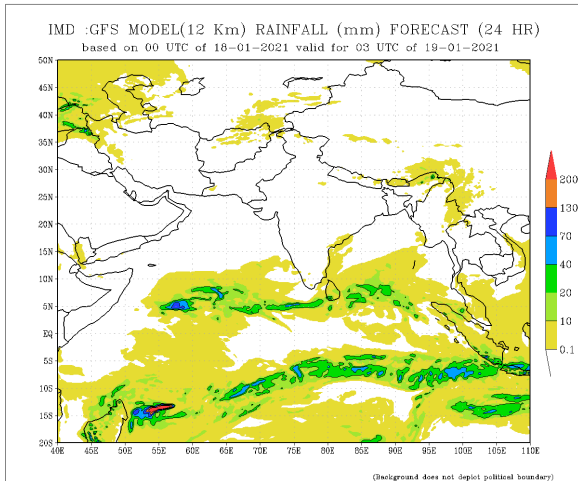
WORLDWATCH topography

## Dekadal Monitoring

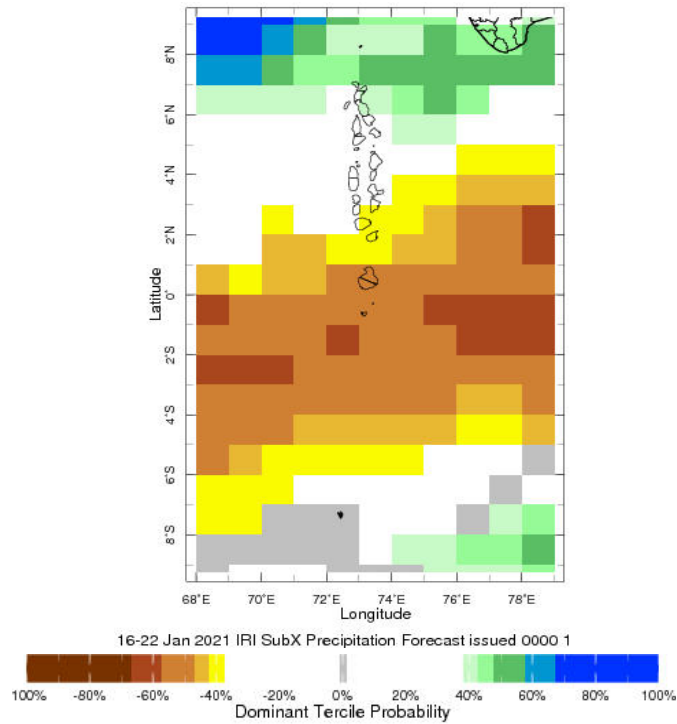


## Daily Rainfall Forecast

Daily Rainfall forecasts (up to 7 days ahead) from the IMD is provided in figures below. These predictions are from the GFS (T1534) model covering the entire south Asian region.



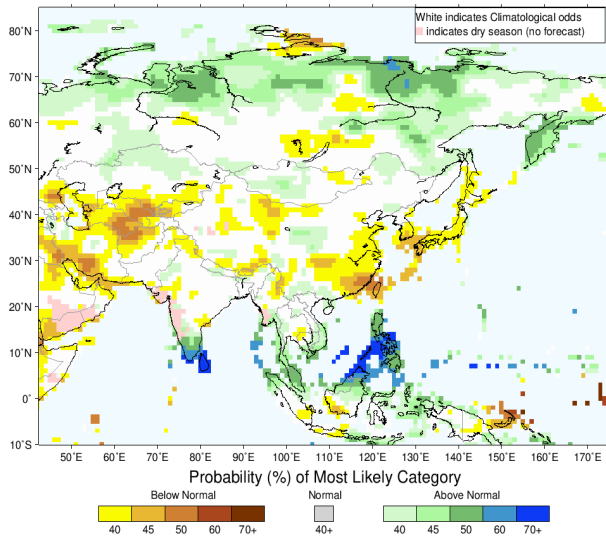
## Weekly Precipitation Forecast



## Seasonal Rainfall and Temperature Forecast

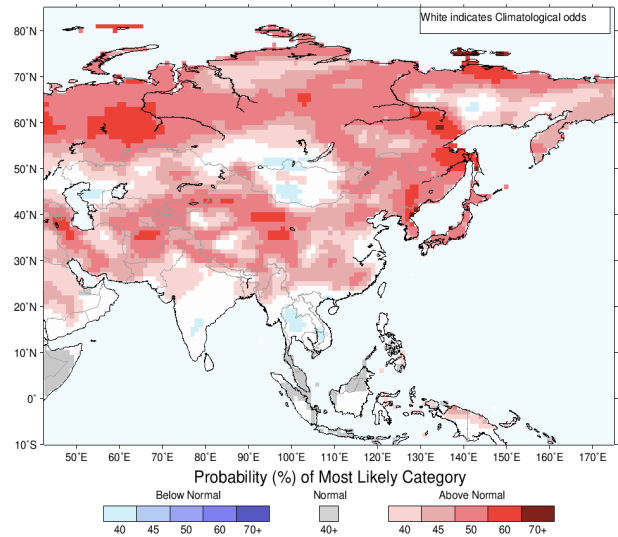
Following is the latest seasonal precipitation and temperature prediction for the next 3 months by the IRI. The color shading indicates the probability of the most dominant tercile -- that is, the tercile having the highest forecast probability. The color bar alongside the map defines these dominant tercile probability levels. The upper side of the color bar shows the colors used for increasingly strong probabilities when the dominant tercile is the above-normal tercile, while the lower side shows likewise for the below-normal tercile. The gray color indicates an enhanced probability for the near-normal tercile (nearly always limited to 40%).

IRI Multi-Model Probability Forecast for Precipitation for January-February-March 2021, Issued December 2020



Precipitation Forecast

IRI Multi-Model Probability Forecast for Temperature for January-February-March 2021, Issued December 2020



Temperature Forecast

Subscribe to our Monthly Maldives Newsletter

email address

Subscribe

Follow @fectmv

Contact Us  
email: [fectmv@gmail.com](mailto:fectmv@gmail.com)  
phone: (+96) 07 788010  
blog: [www.fectmv.blogspot.com](http://www.fectmv.blogspot.com)

Foundation for Environment, Climate & Technology,  
REM, Madhrasaadhoshuge,  
Henveiru, Hadheebee Magu,  
Malei, 20184,  
Maldives