

Week of
3 Dec - 10 Dec
2021

CLIMATE MONITORING AND PREDICTION FOR SRI LANKA

HIGHLIGHTS

Rainfall Prediction



- Heavy rainfall is predicted for Northern provinces from 4th Dec - 7th Dec.

Monitored Rainfalls



- Very heavy rainfall was experienced in Sabaragamuwa province with max of 219.0 mm in Ratnapura district on 24th Nov.

Monitored Wind



- From 23rd Nov - 30th Nov, up to 35 km/h Southeasterlies and Northeasterlies were experienced across the island.

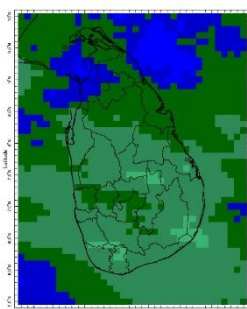
Monitored Sea Surface



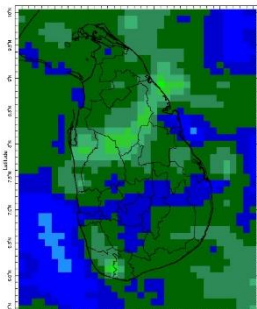
- Sea surface temperatures were above 10°C around the entire island.

Monitoring Rainfall

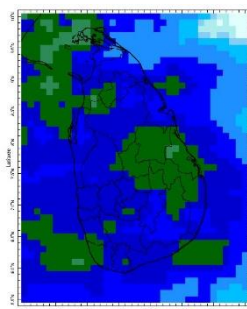
Daily Estimates for Rainfall from 23rd November – 30th November



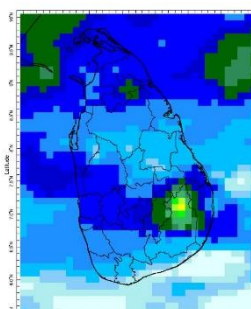
23 November



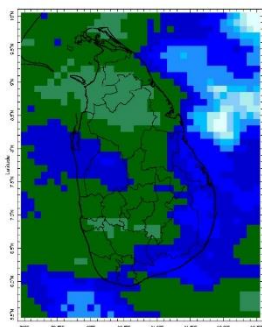
24 November



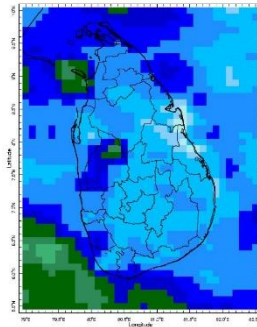
25 November



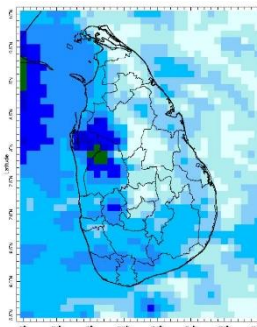
26 November



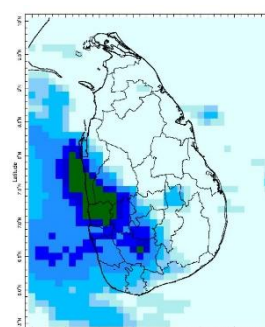
27 November



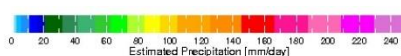
28 November



29 November



30 November



Estimated Precipitation [mm/day]



Federation for
Environment, Climate
& Technology

Federation for Environment, Climate and Technology

c/o, Maintenance Office, Mahaweli Authority, Digana Village, Rajawella, Sri Lanka.

Phone (+94) 81-2376746, (+94) 81-2300415

Web Site: www.fect.lk

E mail: info@fect.lk

LI: www.linkedin.com/in/fectlk

FB: www.facebook.com/fectlk

TW: www.twitter.com/fectlk

Ocean State *(Text Courtesy IRI)*

Pacific sea state: November 24, 2021

Equatorial SSTs were near-to-below average across most of the equatorial Pacific Ocean and were above average in the western Pacific Ocean in the late-November. A large majority of the model forecasts predict a transition from ENSO-neutral to La Niña is favored in the next couple of months and La Niña to continue through the Northern Hemisphere fall and winter.

Indian Ocean State

Sea surface temperatures were above 1°C around the entire island.

Predictions

Rainfall

14-day prediction: NOAA NCEP models

From 4th December – 7th December:

Total rainfall by Provinces:

Rainfall	Provinces
115 mm	Northern
85 mm	North Western, Sabaragamuwa, Western
75 mm	Central, Eastern, North Central, Southern
65 mm	Uva

From 8th December – 14th December:

Total rainfall by Provinces:

Rainfall	Provinces
>135 mm	Eastern, Northern, North Central
135 mm	Central, North Western, Sabaragamuwa, Uva
125 mm	Western
115 mm	Southern

MJO based OLR predictions

For the next 15 days:

MJO shall be active during 4th December – 15th December giving slightly suppressed rainfall for the entire island. Rainfall will be slightly more suppressed in southern Sri Lanka than in the rest of the country from 4th December – 5th December.

Interpretation

Monitoring

Rainfall: During the last two weeks, there had been very heavy rainfall over the Sabaragamuwa Province.

Wind: Southeasterly and Northeasterly winds prevailed in the sea area and around the island last week.

Temperatures: The temperature anomalies were near-neutral for the entire island last week, driven by the warm SST's.

Predictions

Rainfall: During the next week (4th December – 7th December) heavy rainfall is predicted for the Northern province.

Temperatures: The temperature remains normal during 4th December – 11th December for the entire island.

Teleconnections:

La Nina -The SST forecast indicates that ENSO-neutral are present and a transition from ENSO-neutral to La Niña is favored in the next couple of months.

MJO shall be active during 4th December – 15th December giving slightly suppressed rainfall for the entire island. Rainfall will be slightly more suppressed in southern Sri Lanka than in the rest of the country from 4th December – 5th December.

Seasonal Precipitation:

The precipitation forecast for the Dec-Feb season show enhanced probabilities of above-normal precipitation over Sri Lanka.

Understanding the Forecast

	Rainfall (During 24 hours of period)
Light Showers	Less than 12.5 mm
Light to Moderate	Between 12.5 mm and 25 mm
Moderate	Between 25 mm and 50 mm
Fairly Heavy	Between 50 mm and 100 mm
Heavy	Between 100 mm and 150 mm
Very Heavy	More than 150 mm

Tropical Climate Guarantee, Federation of Environment, Climate and Technology, Columbia University Water Center, ¹ International Research Institute for Climate and Society, , Earth Institute at Columbia University, New York.



FECT Web

www.fect.lk
<http://www.climate.lk>
<http://www.tropicalclimate.org/>



FECT Blog

Past reports available at
<http://fectsl.blogspot.com/>



Facebook

www.facebook.com/fectlk



Twitter

www.twitter.com/fectlk



Weekly Climate Bulletin for Sri Lanka

Inside This Issue

1. Monitoring

- a. Daily Rainfall Monitoring
- b. Weekly Rainfall Monitoring
- c. Monthly Rainfall Monitoring
- d. Dekadal (10 Day) Satellite Derived Rainfall Estimates
- e. Weekly Temperature Monitoring
- f. Weekly Wind Monitoring
- g. Weekly Average SST Anomalies

2. Predictions

- a. NCEP GFS Ensemble 1-14 day Rainfall Predictions
- b. GFS (T574) Model Rainfall Forecast from RMSC New Delhi
- c. MJO Related OLR Forecast
- d. Weekly Temperature Forecast
- e. Weekly Wind Forecast
- f. Seasonal Predictions from IRI

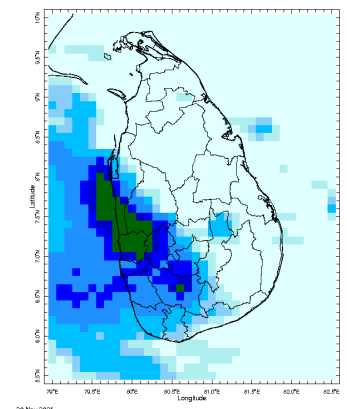
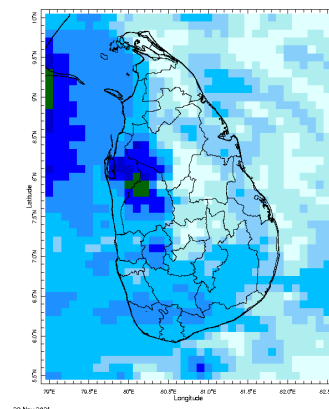
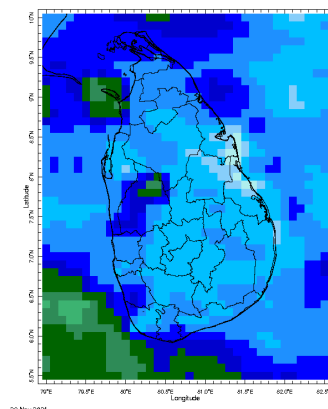
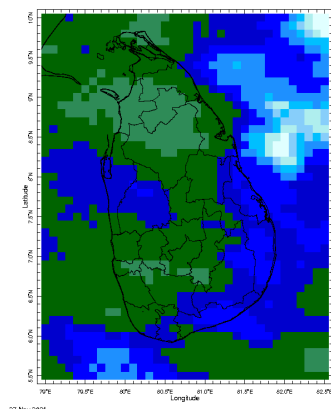
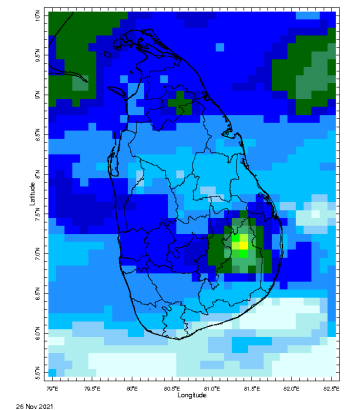
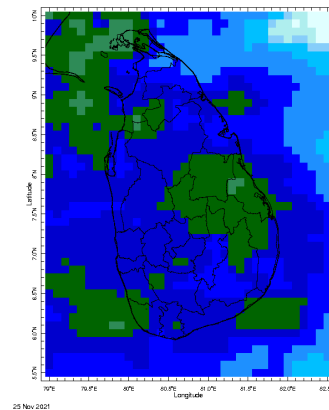
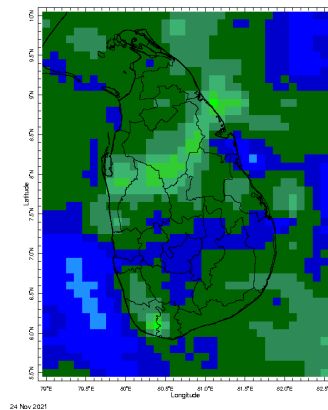
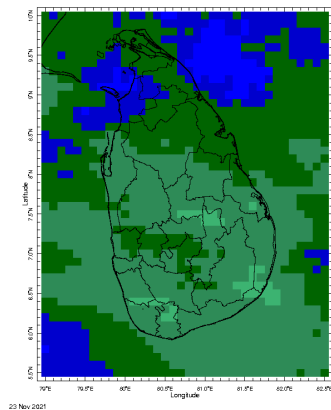


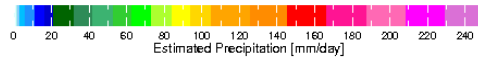
Download

MONITORING

Daily Rainfall Monitoring

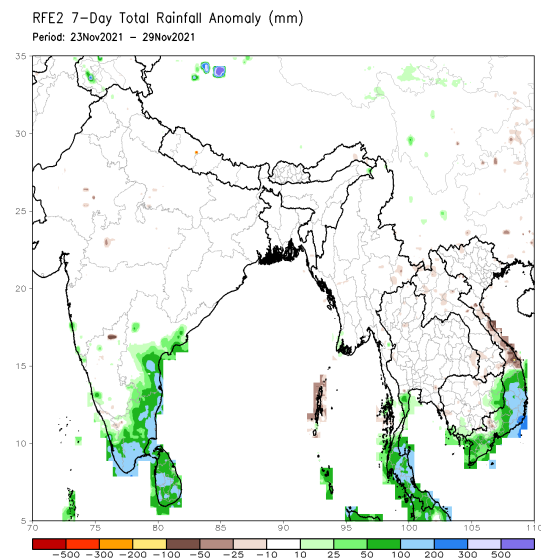
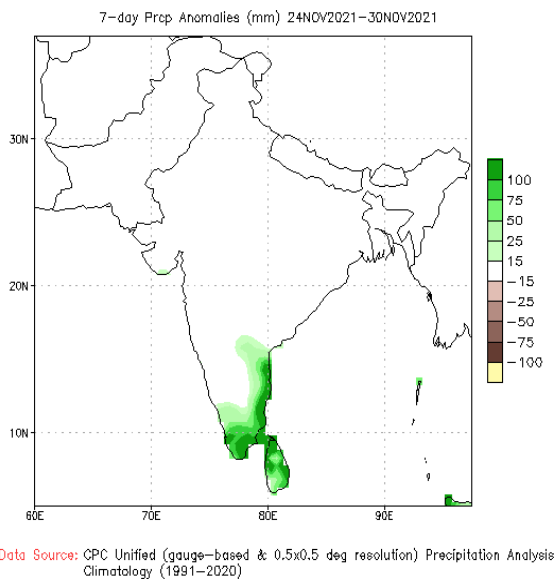
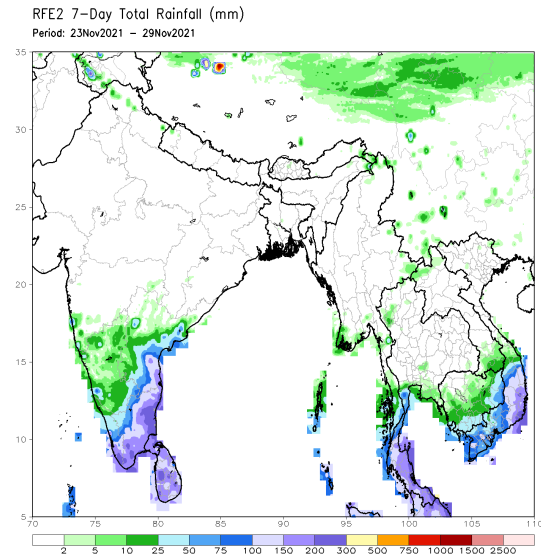
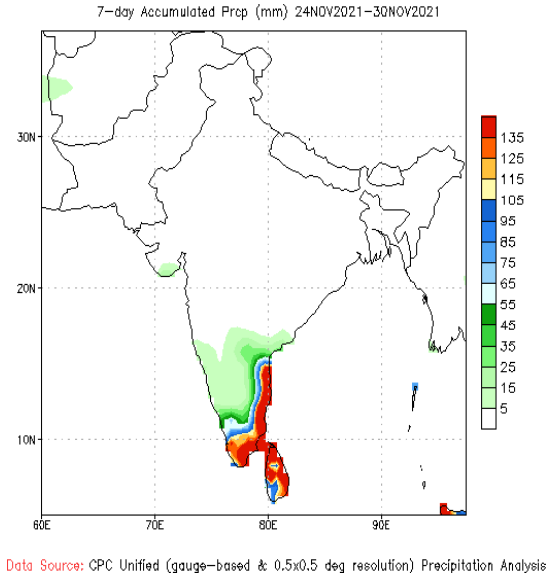
The following figures show the satellite observed rainfall in the last 7 days in Sri Lanka.





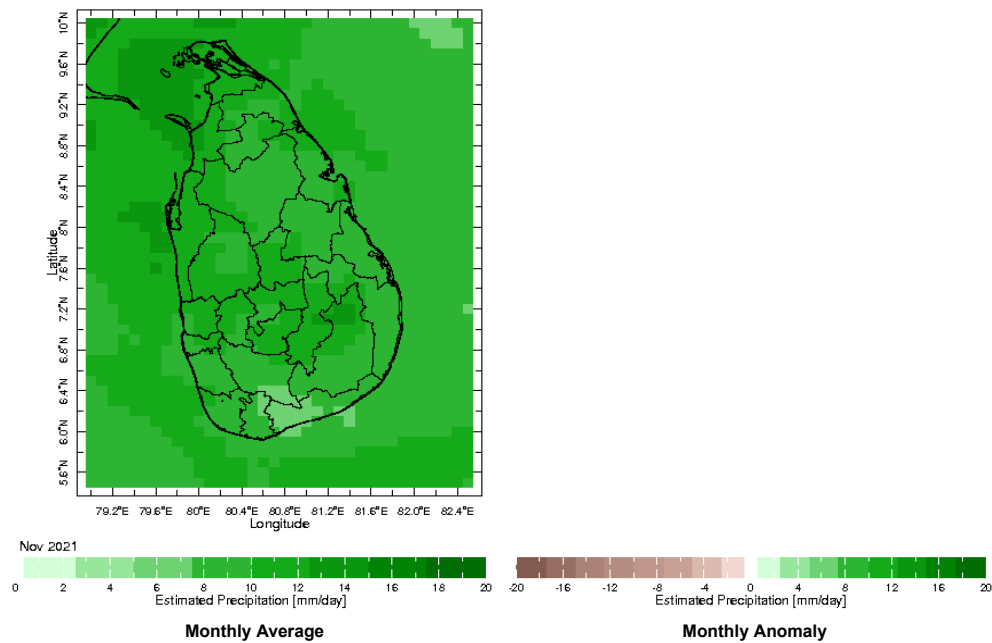
Weekly Rainfall Monitoring

The following figures show the total satellite observed rainfall in the last week in Sri Lanka. The figure in the left is the total 7-day rainfall from NOAA Climate Prediction Center (CPC) Unified Precipitation Analysis and the figure in the right is the total 7-day rainfall from CPC RFE 2.0 Satellite Rainfall Estimates. The bottom two figures are the respective anomalies.

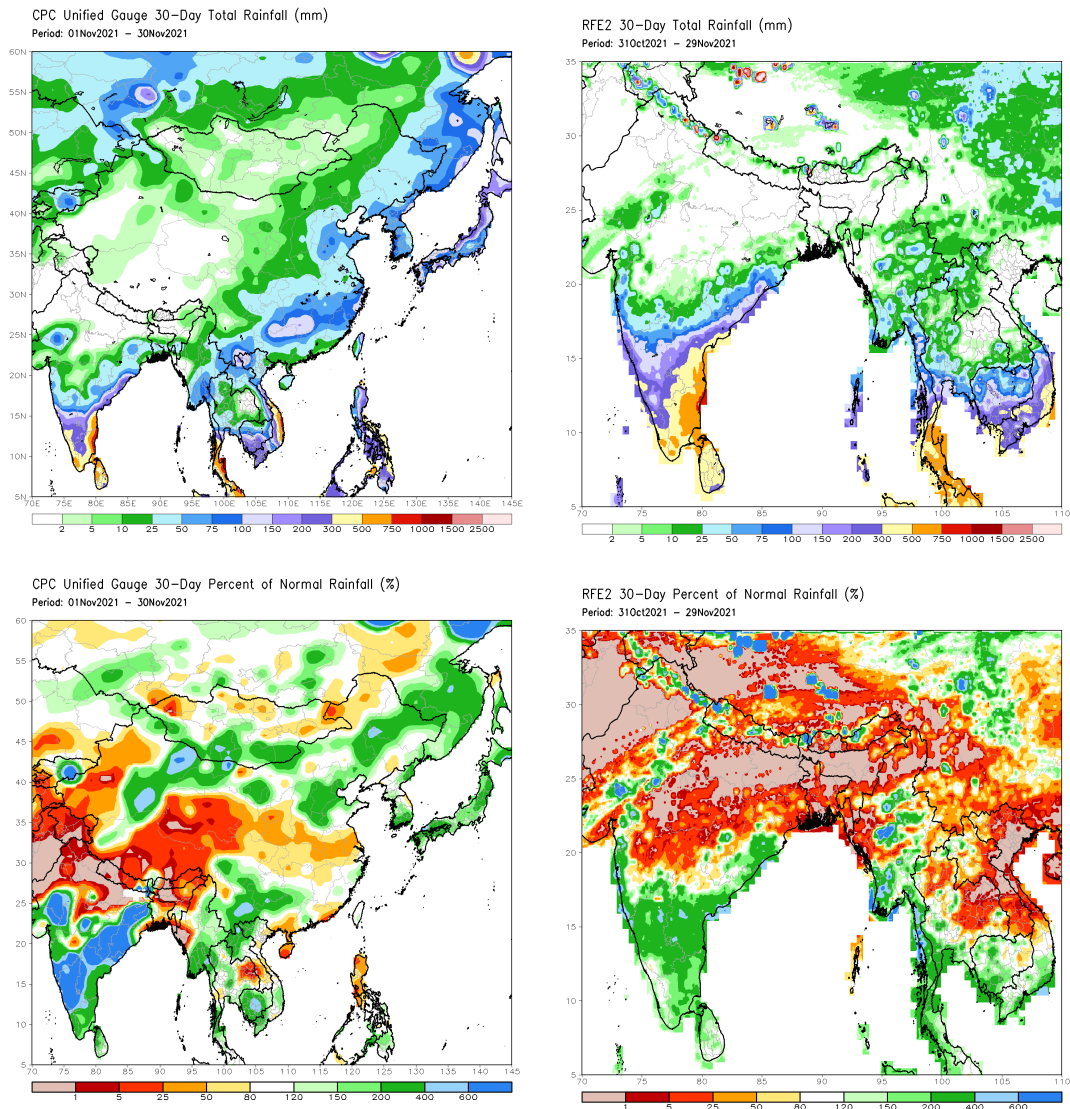


Monthly Rainfall Monitoring

The figure in the left shows the average observed rainfall in the previous month. The rainfall anomaly in the previous month is shown in the figure to the right. The brown color in the anomaly figure shows places which received less rainfall than the historical average while the green color shows places with above average rainfall. Darker shades show higher magnitudes in rainfall

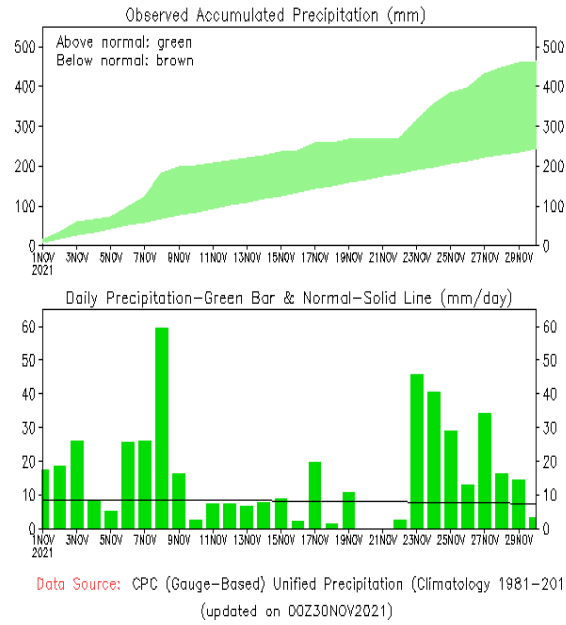


The figure in the top-left shows the total rainfall in the past 30 days from CPC Unified Precipitation Analysis while the figure in the top-right shows the total rainfall for the same period from RFE 2.0 Satellite Rainfall Estimates. The bottom two figures show the percentage of rainfall received in the past 30 days compared to normal rainfall in this period.

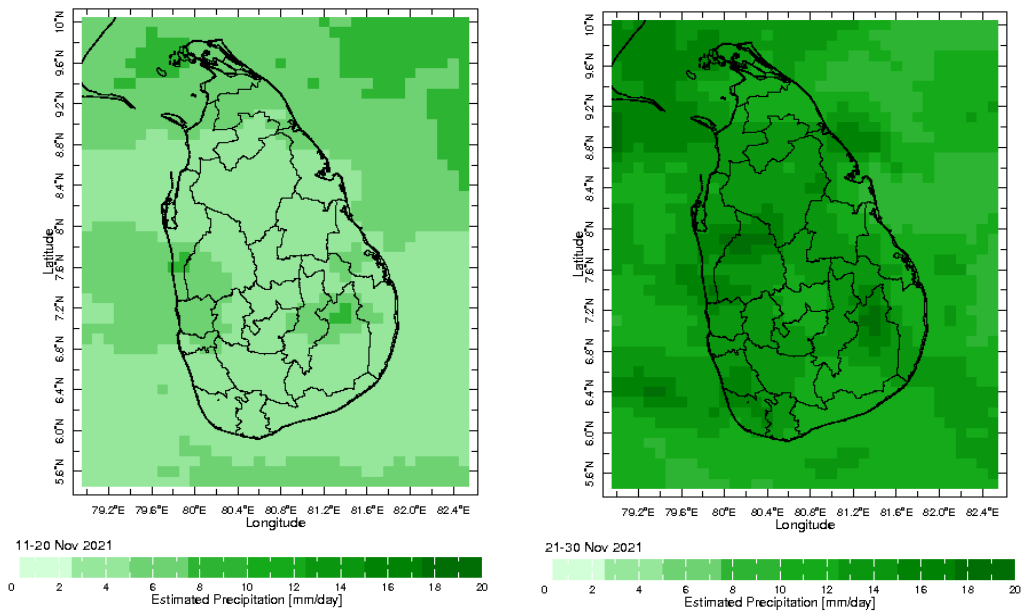


The following figure shows the observed accumulated rainfall (top) and daily observed rainfall (bottom) in Sri Lanka in the last 30 days.

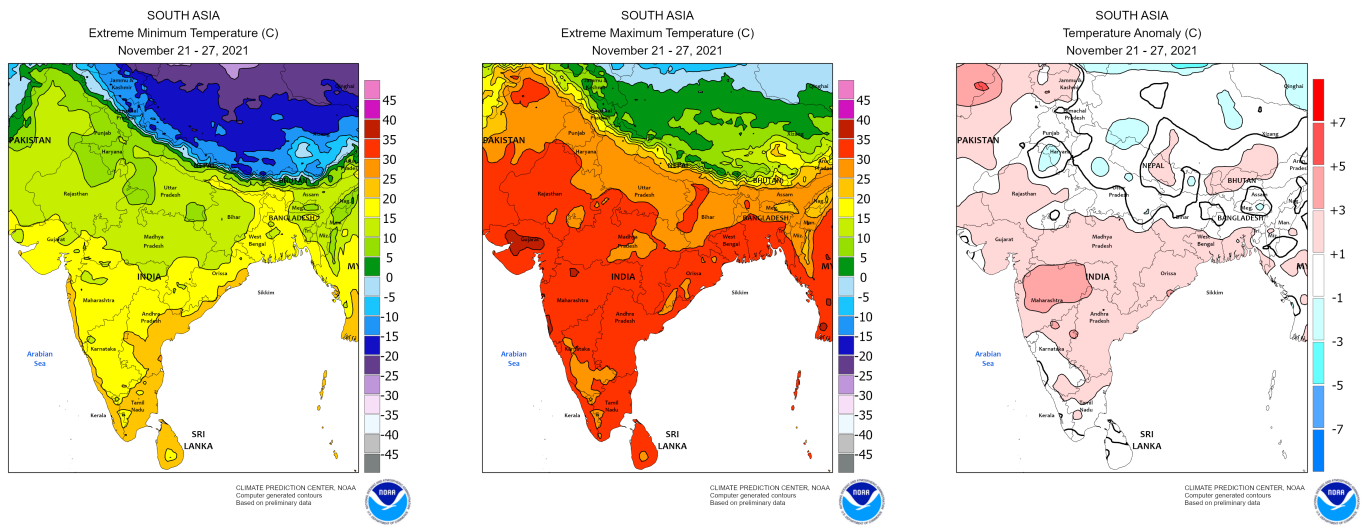
Sri-Lanka



Dekadal (10 Day) Satellite Derived Rainfall Estimates

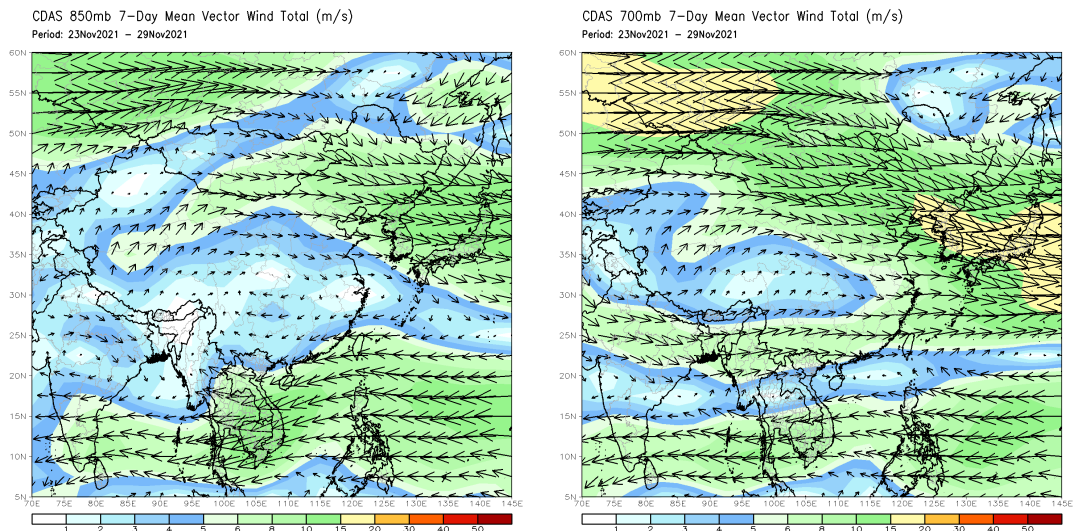


Weekly Temperature Monitoring



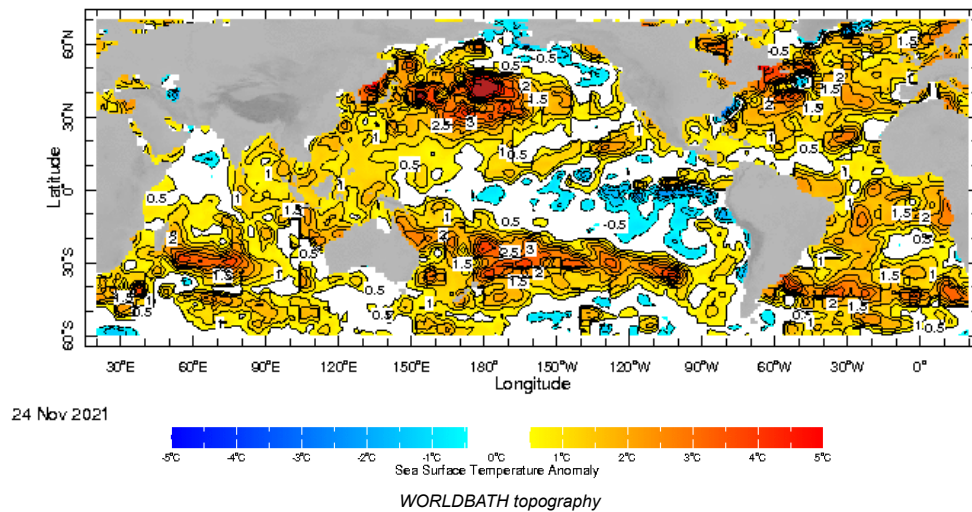
Weekly Wind Monitoring

The following figures show the mean vector wind total of the past 7 days near Sri Lanka at two levels. The figure on the left shows 850 mb (~1500 m) level and the figure on the right shows 700 mb (~3000 m) level.

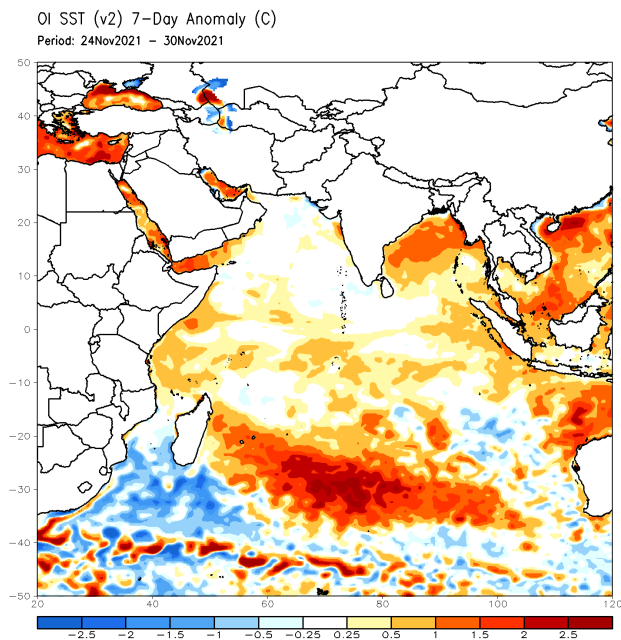


Weekly Average SST Anomalies

Weekly average Sea Surface Temperature (SST) anomaly in the world from NOAA NCEP

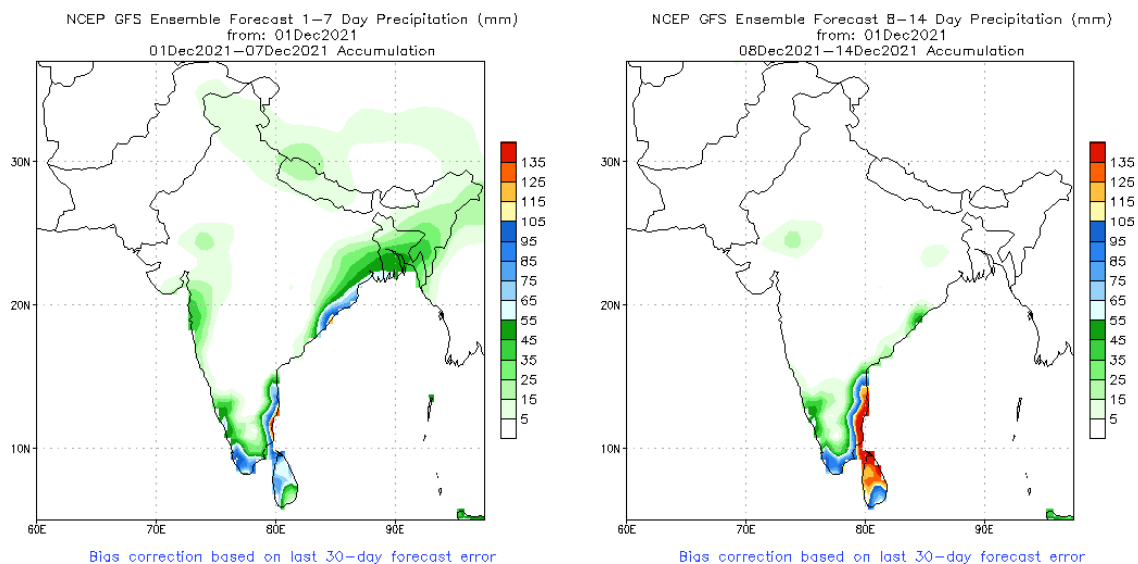


Optimum Interpolated Sea Surface Temperature Anomaly in the Indian Ocean from NOAA CPC

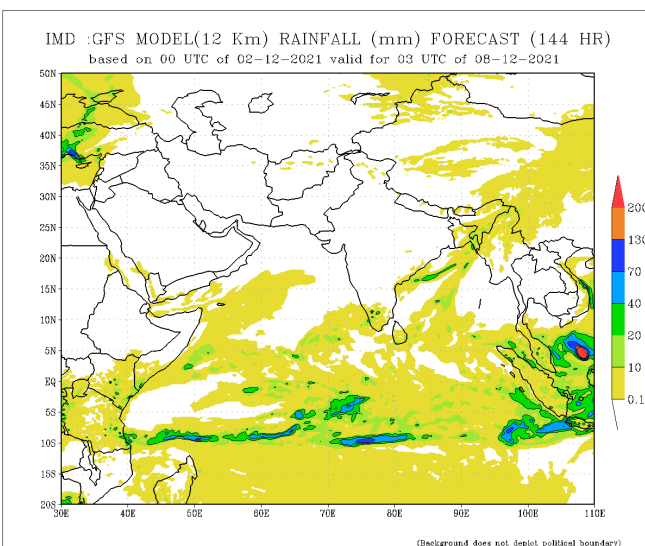
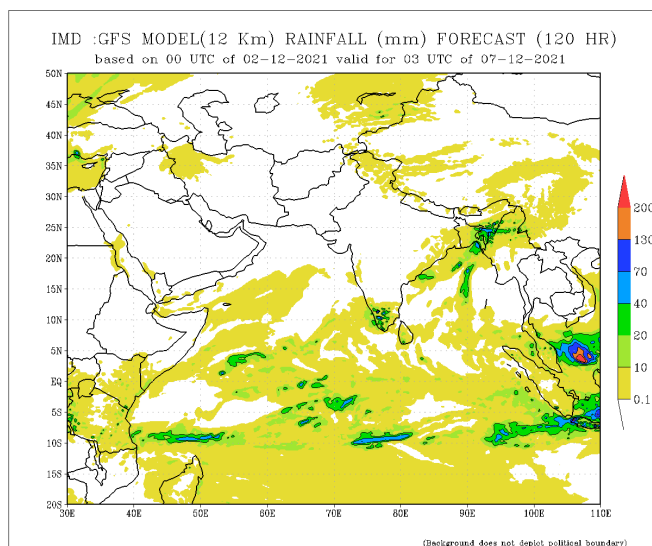
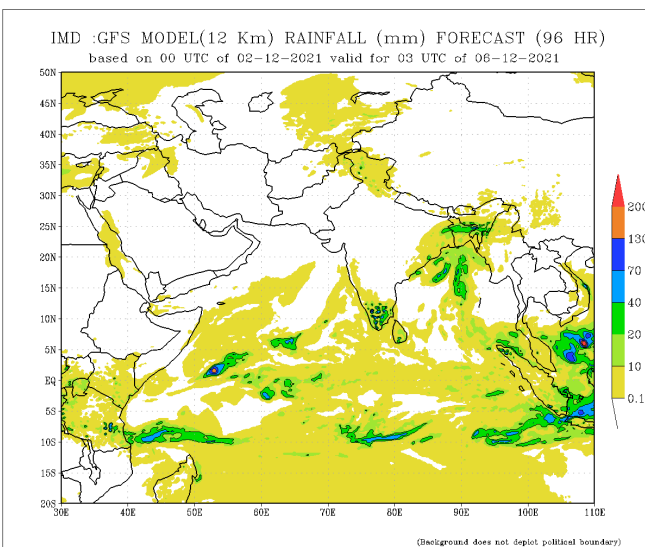
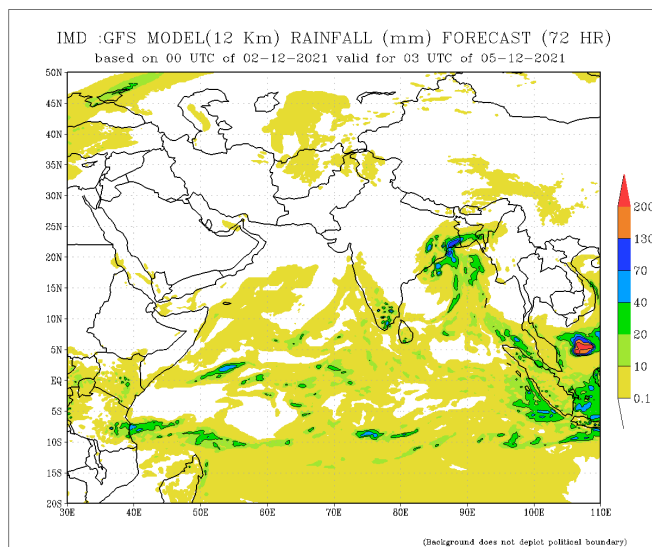
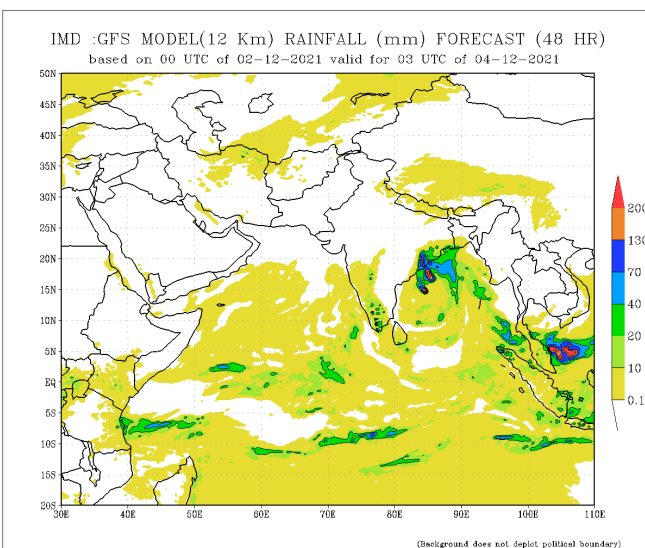
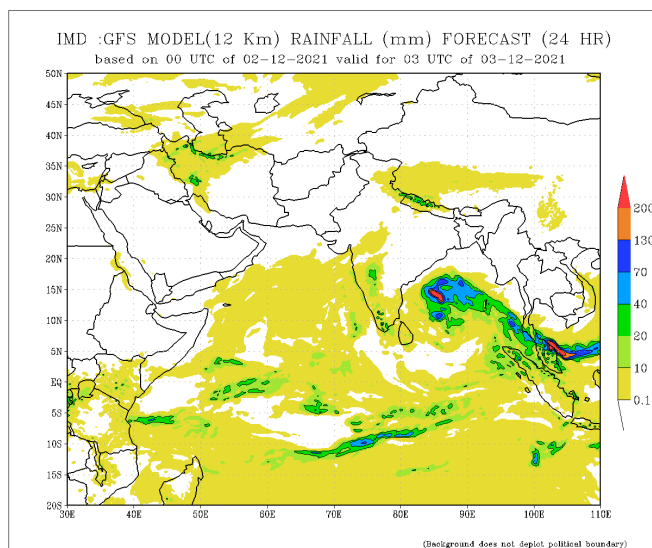


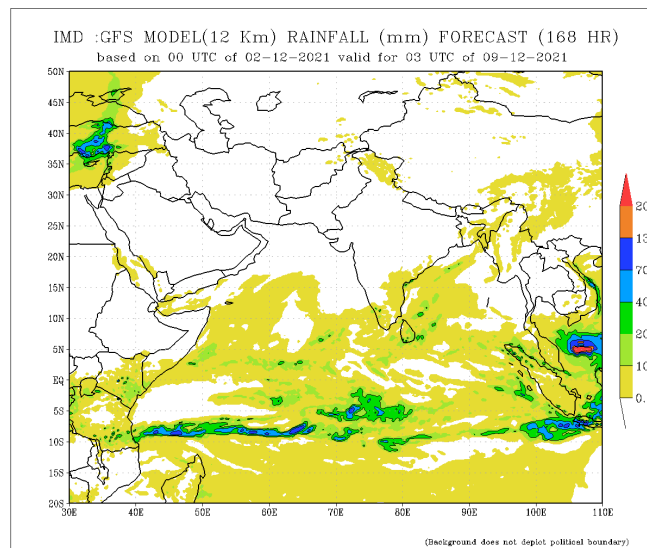
PREDICTIONS

NCEP GFS 1- 14 Day prediction



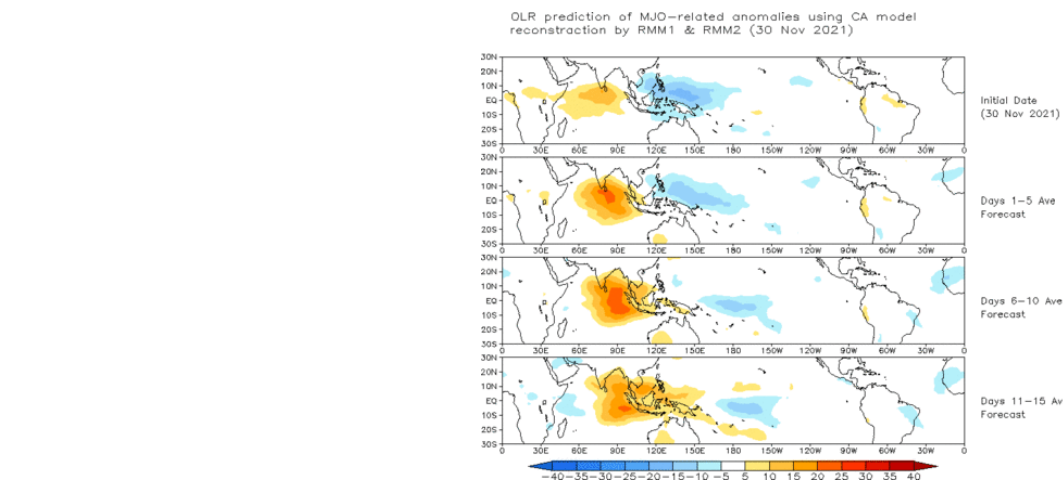
IMD GFS (T574) Model Rainfall Forecast from RMSC New Delhi, India





Madden Julian Oscillation (MJO) related Outgoing Longwave Radiation (OLR) Forecast

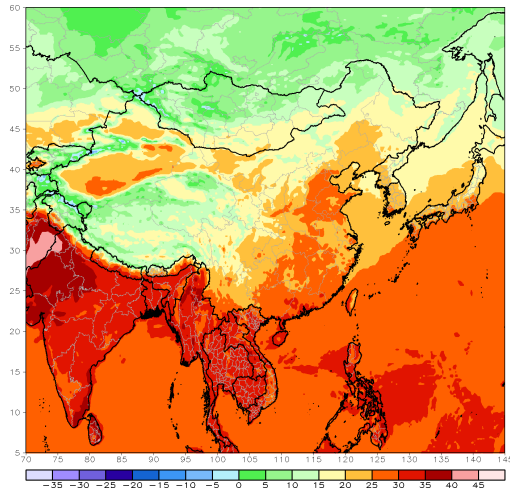
The Outgoing Longwave Radiation (OLR) is a proxy for rainfall. This can be used to identify convective rain clouds based on the MJO phase. Violet and Blue shading indicates enhanced tropical weather and Orange shading indicates suppressed conditions. The following figure shows the forecasts of MJO associated anomolous OLR for the next 15 days from the Constructed Analogue (CA) model forecasts.



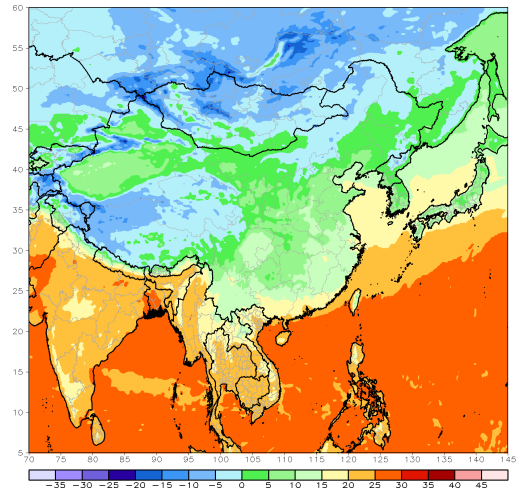
Weekly Temperature Forecast

Weekly Minimum and Maximum Temperature prediction from the GFS model (from NOAA CPC)

GFS week1 Temperature Max (C)
Ending: 18z08Dec2021



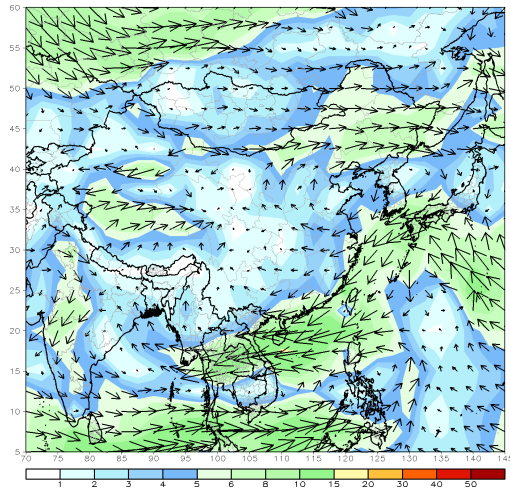
GFS week1 Temperature Min (C)
Ending: 18z08Dec2021



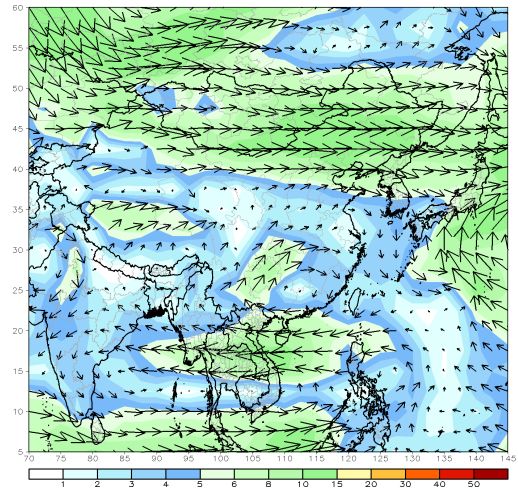
Weekly Wind Forecast

Weekly mean vector wind total prediction from the GFS model at 850 mb (left) and 700 mb (right) levels. (from NOAA CPC)

GFS 850mb week1 Mean Vector Wind Total (m/s)
Ending: 18z08Dec2021



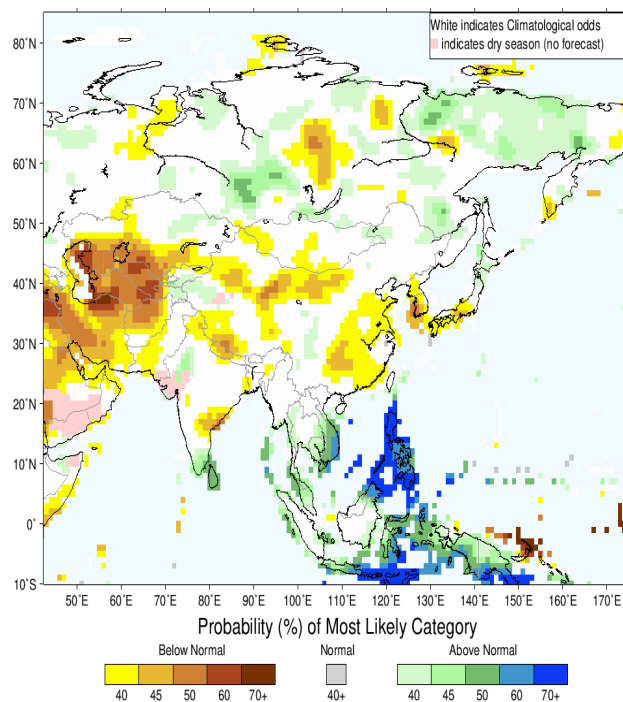
GFS 700mb week1 Mean Vector Wind Total (m/s)
Ending: 18z08Dec2021



Seasonal Rainfall and Temperature Forecast

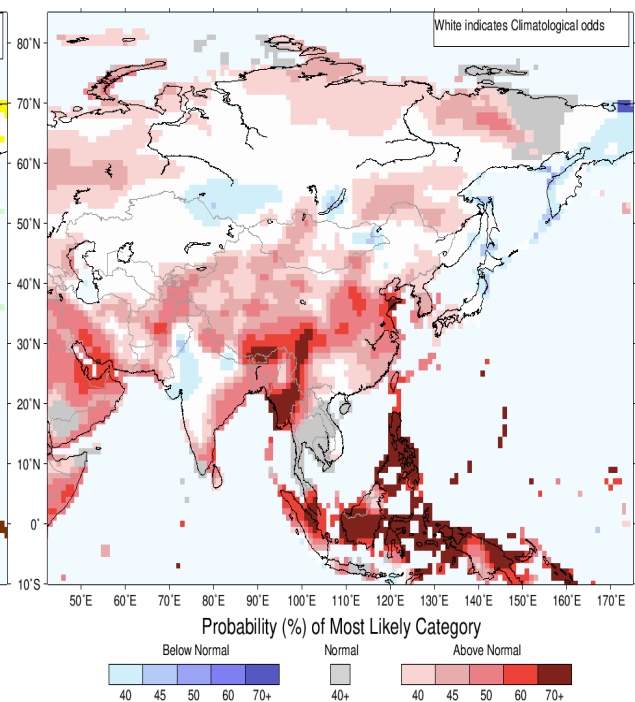
Following is the latest seasonal precipitation and temperature prediction for the next 3 months by the IRI. The color shading indicates the probability of the most dominant tercile -- that is, the tercile having the highest forecast probability. The color bar alongside the map defines these dominant tercile probability levels. The upper side of the color bar shows the colors used for increasingly strong probabilities when the dominant tercile is the above-normal tercile, while the lower side shows likewise for the below-normal tercile. The gray color indicates an enhanced probability for the near-normal tercile (nearly always limited to 40%).

IRI Multi-Model Probability Forecast for Precipitation for
November–December–January 2022, Issued October 2021



Precipitation Forecast

IRI Multi-Model Probability Forecast for Temperature for
November–December–January 2022, Issued October 2021



Temperature Forecast

About us

FECT is a federation of 7 organizations registered in four countries which works in countries across the Indian Ocean Islands and its littoral. Over the last 20 years, we have had operations in Africa, South Asia, South-East Asia but now it is mostly in the Indian Ocean Islands.

Contact us

Digana Village, Rajawella, KY20180, Sri Lanka.
76/2 Matale Road, Akurana, KY 20850, Sri Lanka.

+94 81 230 0415
+94 81 237 6746

info@fect.lk

Follow us



Subscribe to our monthly newsletter