

## Experimental Climate Monitoring and Prediction

by: Udara Rathnayake, Prabodha Agalawatte, Zeenas Yahiya,  
Lareef Zubair and Michael Bell (FECT and IRI<sup>1</sup>)

12 May 2016

### FECT BLOG

Past reports available at  
<http://fects.blogspot.com/> and

<http://fects.wordpress.com/>

### FECT WEBSITES

<http://www.climate.lk> and  
<http://www.tropicalclimate.org/>

### April 21, 2016 PACIFIC SEAS STATE

During mid-April 2016 the positive tropical Pacific SST anomaly was weakening, now indicating only a moderate strength El Niño. All atmospheric variables continue to support the El Niño pattern, but at reduced strength. This includes weakened trade winds and excess rainfall in the east-central tropical Pacific, extending eastward to a lesser extent than last month. Most ENSO prediction models indicate continued weakening El Niño conditions during the rest of the northern spring season, returning to neutral by late spring or early summer 2016, with La Niña development likely by fall.

(Text Courtesy IRI)

### INDIAN OCEAN STATE

1°C above average sea surface temperature was observed around Sri Lanka.

### MJO STATE

MJO phase is in 3 therefore shall slightly enhance rainfall in Sri Lanka.

### Highlights

Increased rainfall conditions were observed in the last week compared to the previous week. The entire country received rainfall during 3<sup>rd</sup>-9<sup>th</sup> May while up to 60mm high rainfall was seen in Mullaitivu, Vavuniya, northern region of Anuradhapura and south eastern sea region on 6<sup>th</sup> May. Both NCEP GFS and IRI CFS models predict heavy rainfall in the following two weeks with the entire country expected to receive more than 135 mm rainfall. MJO phase is in 3 and shall slightly enhance rainfall.

### Summary

#### Monitoring

**Weekly Monitoring:** South western and north eastern regions of the country including south eastern, western and eastern sea regions received rainfall during 3<sup>rd</sup>- 9<sup>th</sup> May. Up to 30mm rainfall was seen in eastern region of Gampaha, Colombo and sea close to Colombo on 3<sup>rd</sup>-4<sup>th</sup> May while surrounding regions received up to 20mm rainfall. On the 5<sup>th</sup>, the sea near Akkaraipattu and the western sea side along Puttalam, Gampaha, Colombo and Kalutara districts received up to 30mm rainfall. On 6<sup>th</sup> May, Mullaitivu, Vavuniya, northern region of Anuradhapura and south eastern sea region of the country received heavy rainfall up to 60mm while close regions received up to 30mm rainfall. Up to 50mm rainfall was seen in Mullaitivu, Vavuniya, northern region of Anuradhapura, sea close to Colombo and south western sea region of the country on the 7<sup>th</sup> while surrounding regions also received up to 30mm rainfall. Only up to 20mm slight rainfall was seen in the entire country on 8<sup>th</sup> May while up to 30mm rainfall was received along the sea side from Puttalam to Galle and sea close to Hambantota. Only Around Kurunegala town and Hanwella received up to 30mm rainfall on the 9<sup>th</sup> while other regions of the country received slight rainfall.

**Monthly Monitoring:** During April 2016 most regions of the country received below average rainfall except Ratnapura, Colombo and Gampaha districts. These districts received up to ~120mm monthly excess rainfall than the historical average.

#### Predictions

**14-day prediction:** NOAA NCEP models predict more than 135mm total rainfall in the entire country, except northern region during 11<sup>th</sup> – 17<sup>th</sup> May. Rainfall shall decrease during 18<sup>th</sup>-24<sup>th</sup> May and up to 85mm total rainfall is expected in south western region of the country while north, north east and east regions shall receive up to 45mm rainfall.

**IMD WRF & IRI Model Forecast:** According to the IMD WRF model, up to 65mm total rainfall is expected in the western sea near Puttalam while up to 35mm rainfall is expected in Galle and Vavuniya, Colombo and Puttalam districts on the 13<sup>th</sup>. There shall be up to 125mm rainfall in the sea east of Batticaloa, Kalutara and Kegalle districts while up to 65mm rainfall is expected in surrounding regions on the 14<sup>th</sup>. The IRI CFS model predicts heavy rainfall around Puttalam, Galle, Matara, Hambantota districts and surrounding regions while the southern sea of the country shall have very heavy rainfall during 11<sup>th</sup>-16<sup>th</sup> May. This extreme heavy rainfall conditions shall increase towards the south eastern sea region.

**Seasonal Prediction:** As per IRI Multi Model Probability Forecast for May to July, the total 3-month precipitation shall be climatological. The 3-month temperature has more than 70-80% likelihood in the entire country of being in the above-normal tercile during this period.

### Inside this Issue

#### 1. Monitoring

- Daily Satellite Derived Rain fall Estimates
- Monthly Rain fall Estimates
- Decadal (10 Day) Satellite Derived Rainfall Estimates
- Weekly Average SST Anomalies

#### 2. Predictions

- NCEP GFS Ensemble 1-14 day predictions
- WRF model forecast Regional Meteorological Center, Chennai, Indian Meteorological Department)
- Weekly precipitation forecast (IRI)
- Seasonal Predictions from IRI

<sup>1</sup> International Research Institute for Climate and Society, Earth Institute at Columbia University, New York.

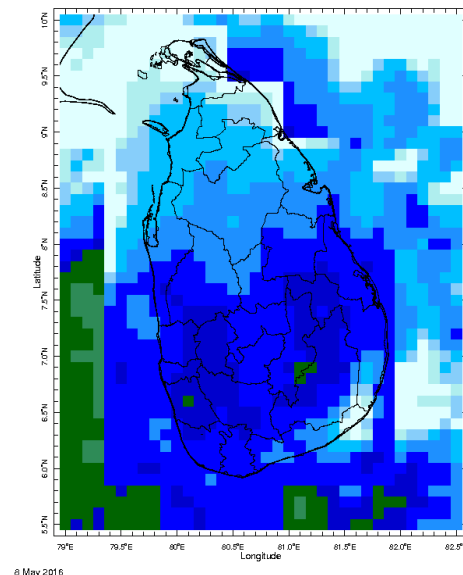
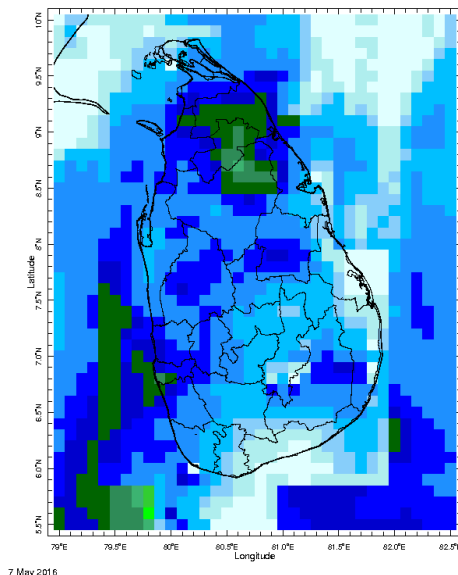
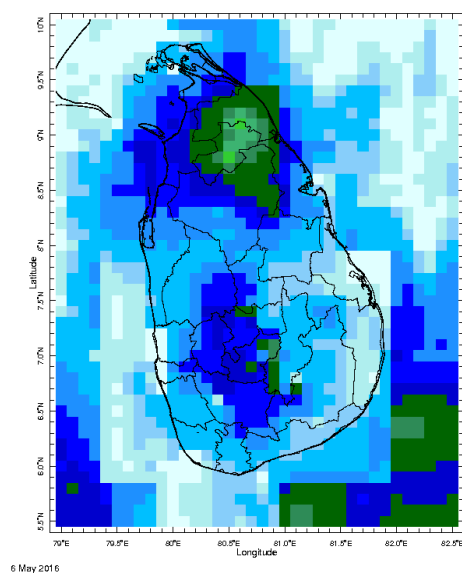
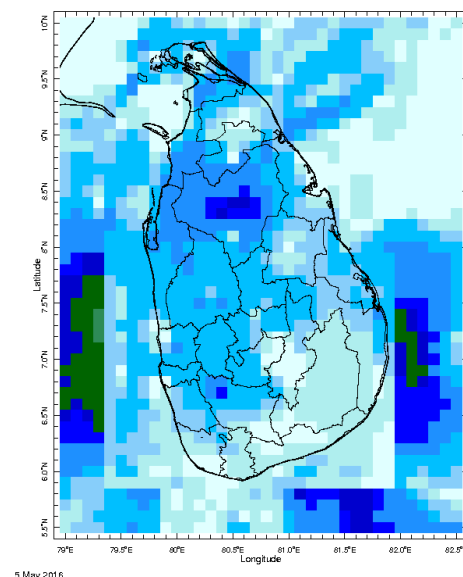
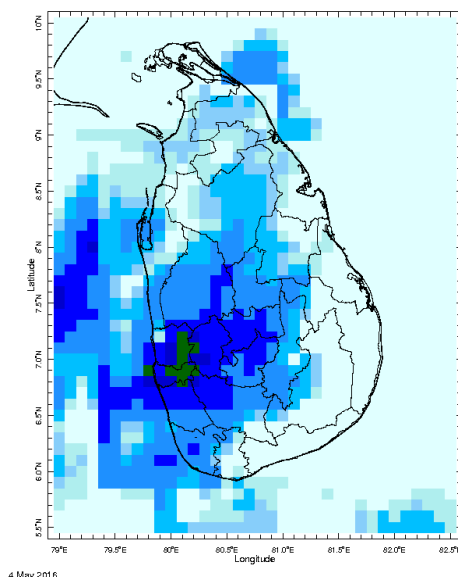
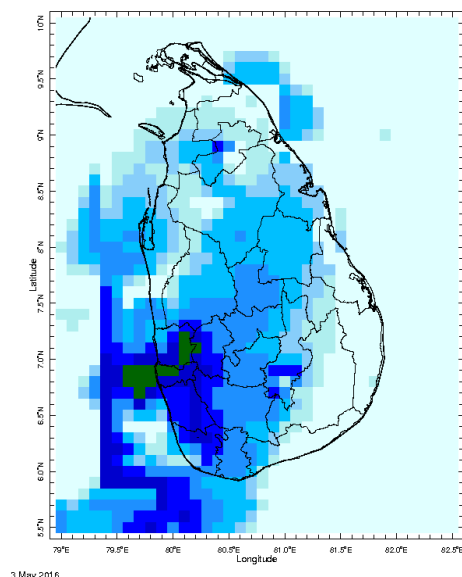
## Weekly Hydro- Meteorological Report for Sri Lanka

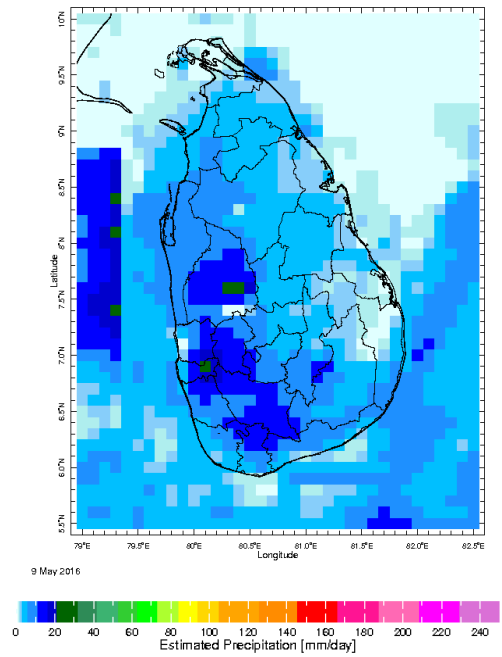
### Inside This Issue

1. **Monitoring**
  - a. Daily Satellite derived Rainfall Estimates
  - b. Monthly Rainfall Estimates
  - c. Decadal (10 Day) Satellite Derived Rainfall Estimates
  - d. Weekly Average SST Anomalies
2. **Predictions**
  - a. NCEP GFS Ensemble 1-14 day predictions
  - b. WRF Model Forecast (48 hours and 72 Hours Ahead)
  - c. Weekly Precipitation Forecast from IRI
  - d. Seasonal Predictions from IRI

### Daily Rainfall Monitoring

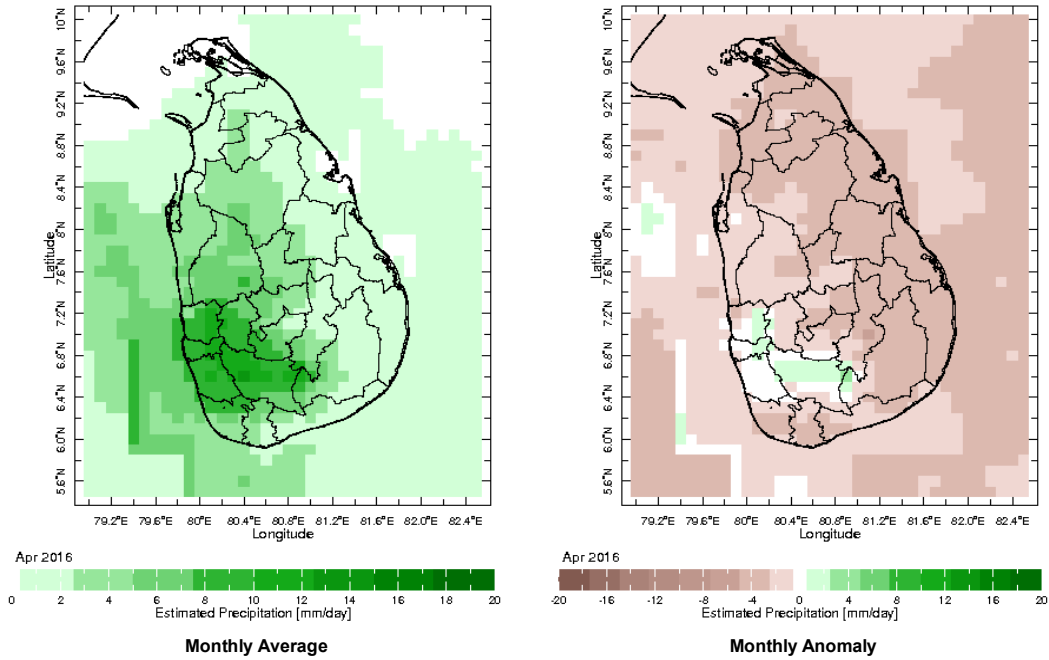
The following figures show the satellite observed rainfall in the last 7 days in Sri Lanka.



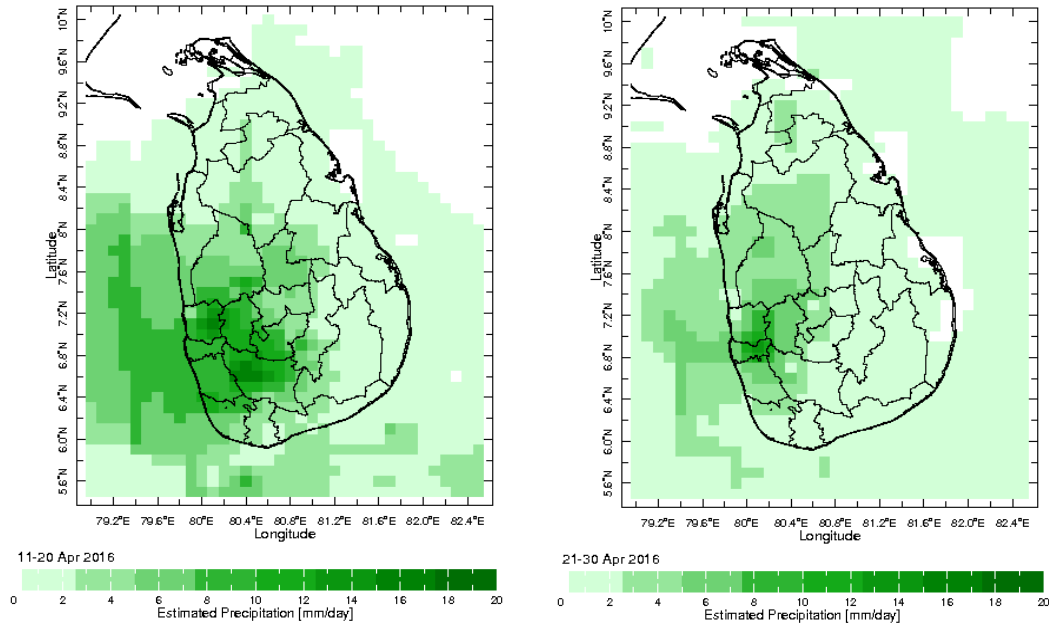


Monthly Rainfall Monitoring

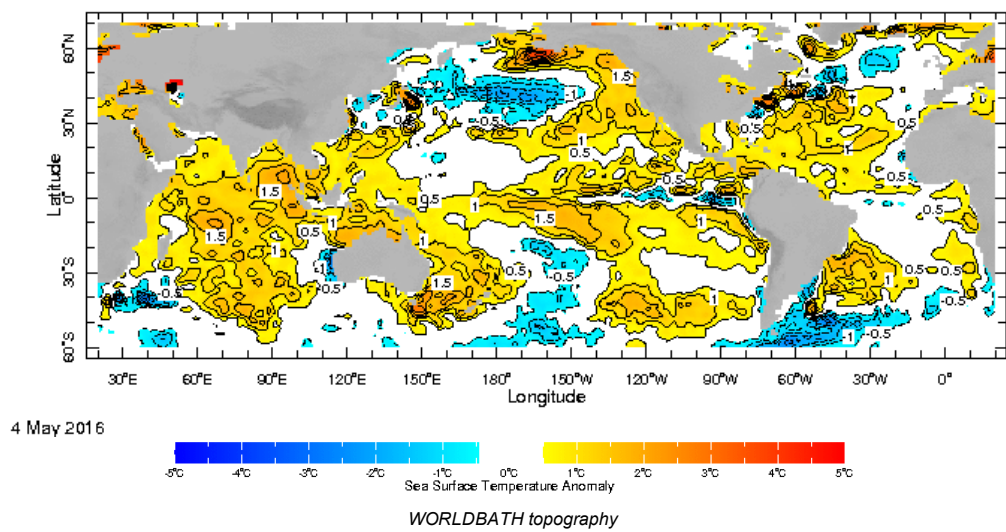
The figure in the left shows the average observed rainfall in the previous month. The rainfall anomaly in the previous month is shown in the figure to the right. The brown color in the anomaly figure shows places which received less rainfall than the historical average while the green color shows places with above average rainfall. Darker shades show higher magnitudes in rainfall



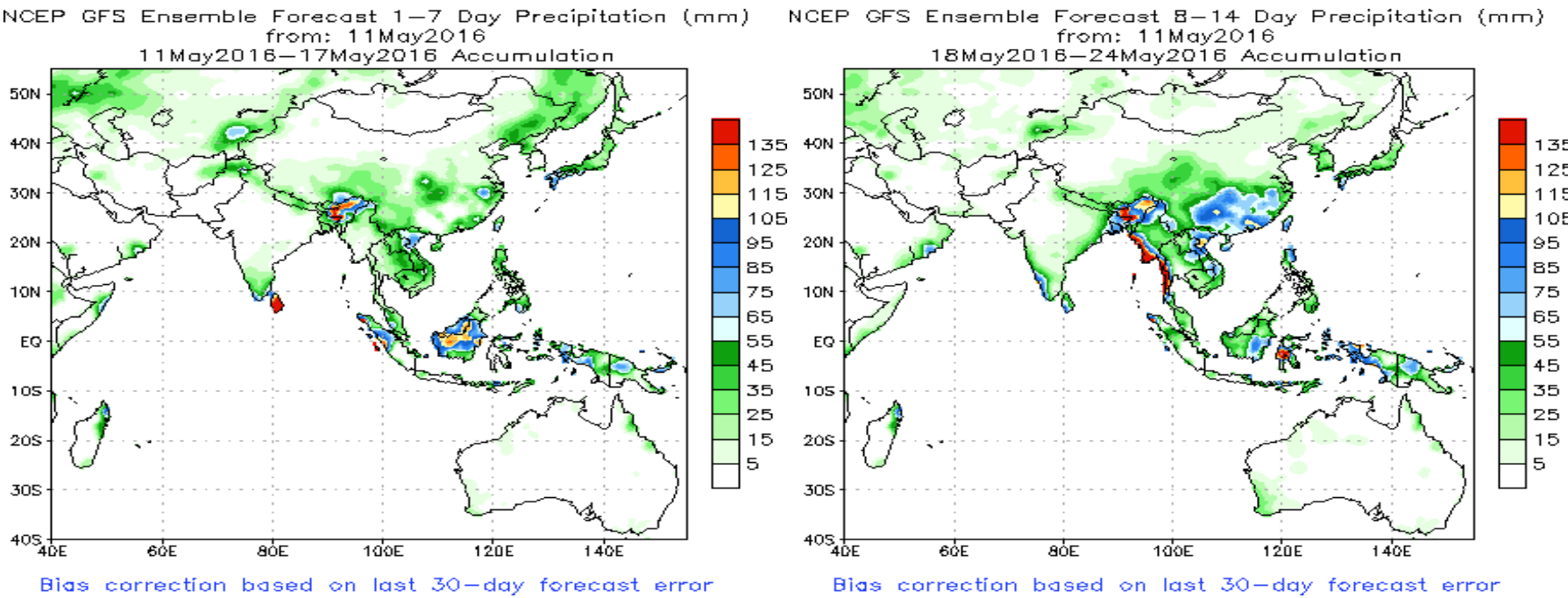
Dekadal (10 Day) Satellite Derived Rainfall Estimates



Weekly Average SST Anomalies

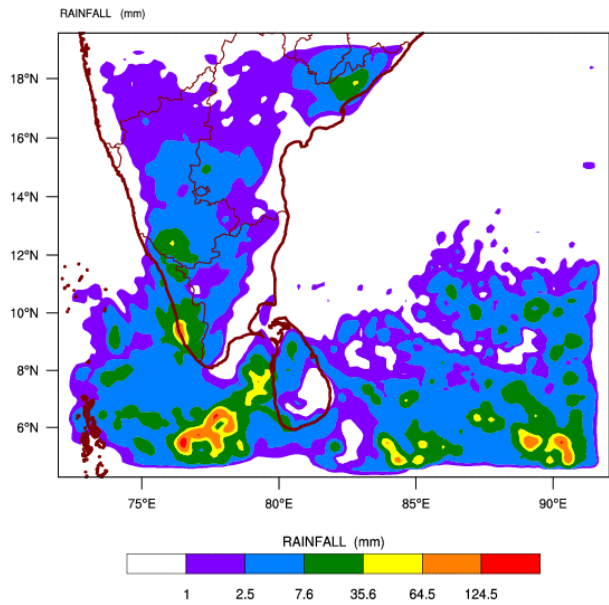


NCEP GFS 1- 14 Day prediction

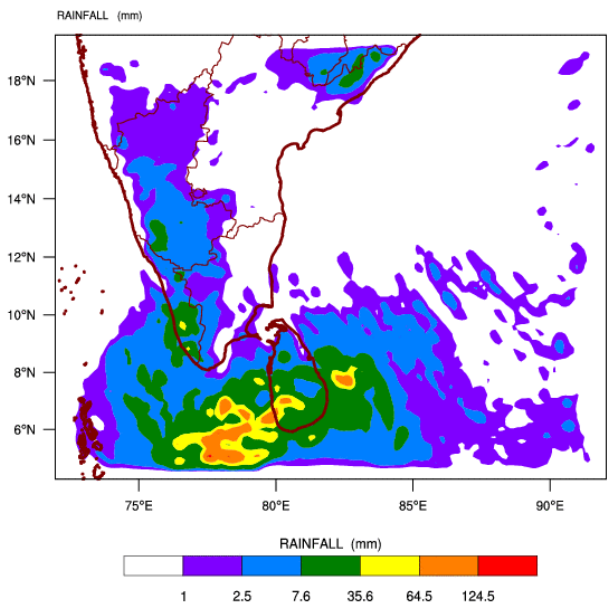


WRF Model Forecast (from IMD Chennai)

WRF MODEL FORECAST (48 HR.) RAINFALL(mm)\  
based on 00 UTC of 11-05-2016 valid for 03 UTC of 13-05-2016

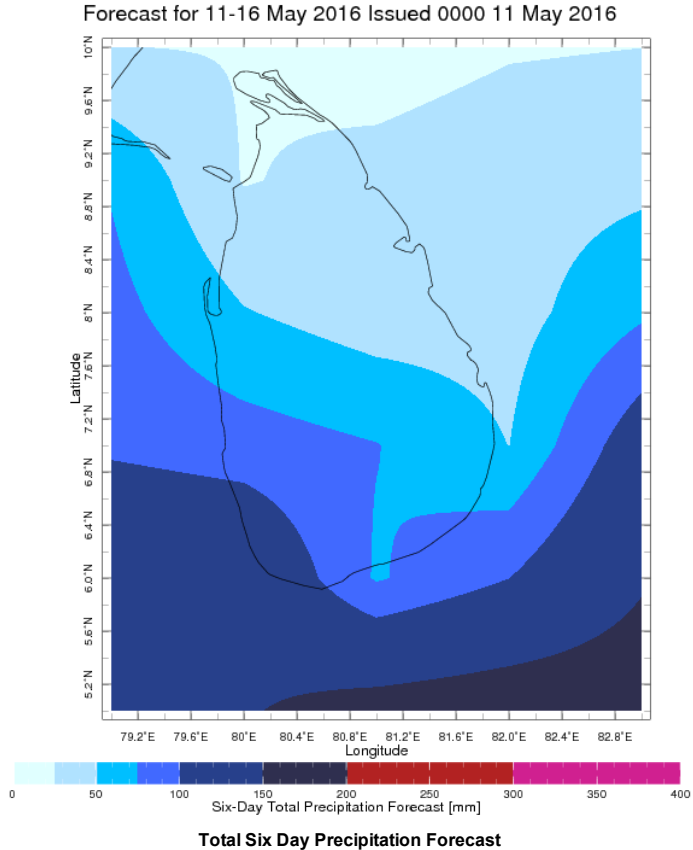
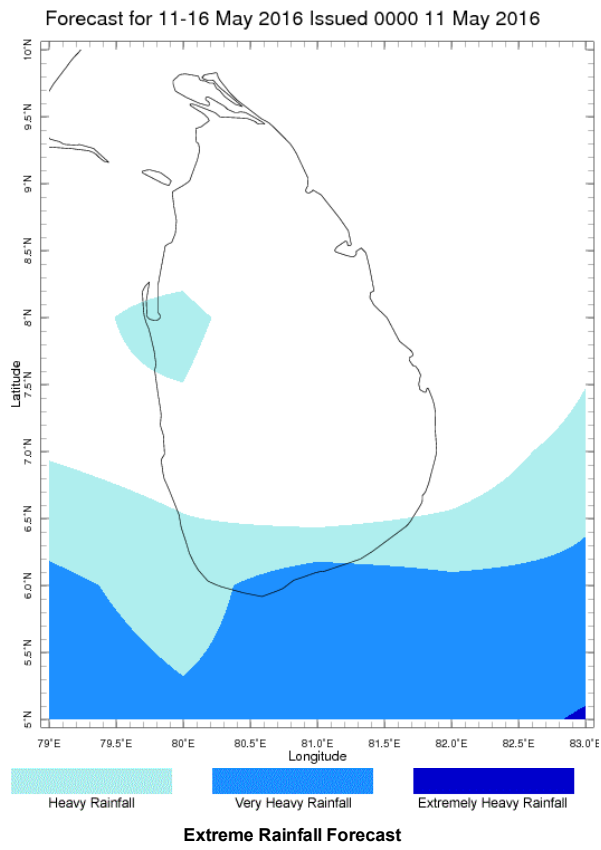


WRF MODEL FORECAST (72 HR.) RAINFALL(mm)\  
based on 00 UTC of 11-05-2016 valid for 03 UTC of 14-05-2016



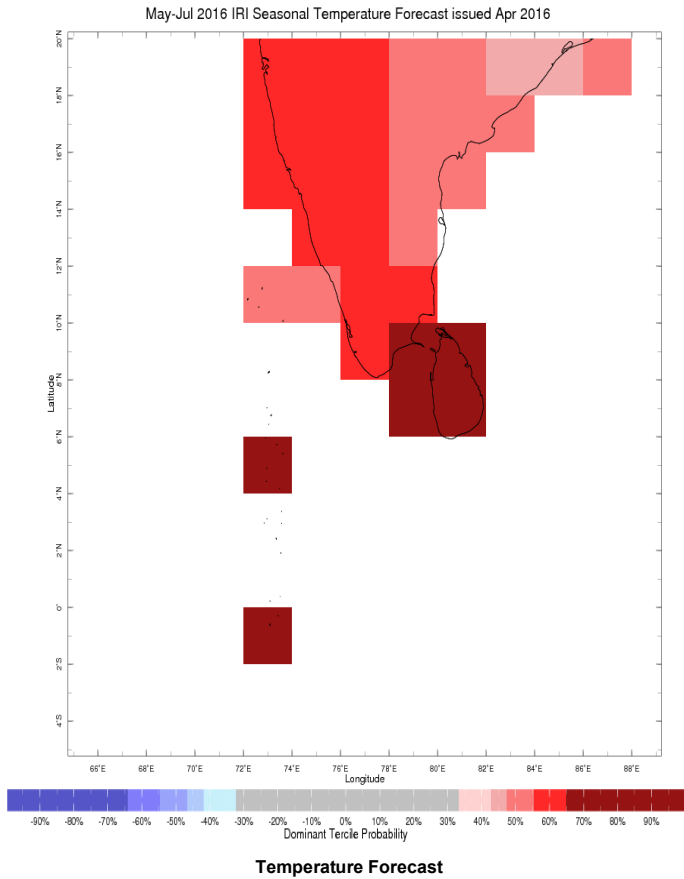
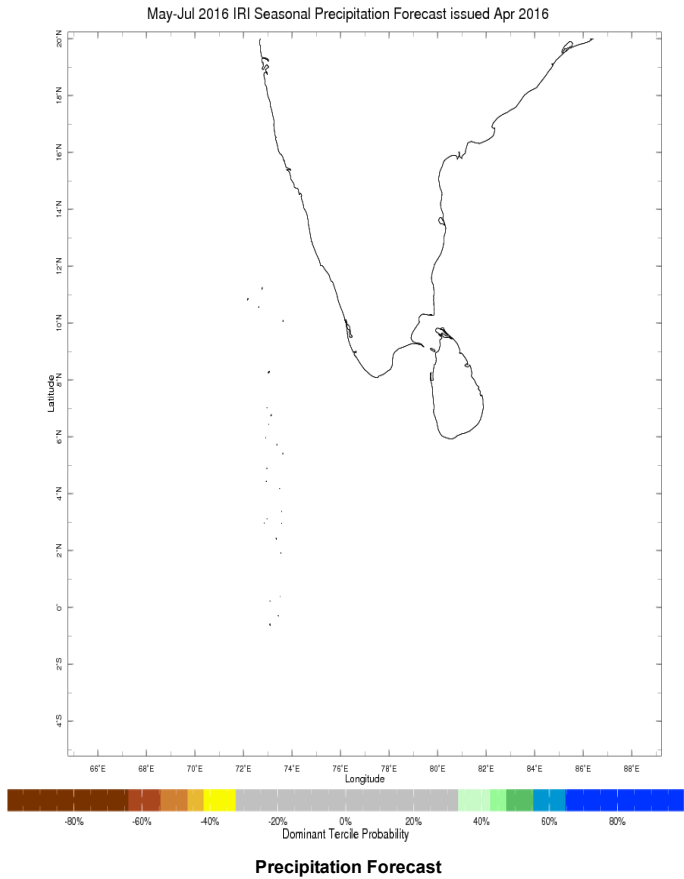
Weekly Rainfall Forecast

Total rainfall forecast from the IRI for next six days is provided in figures below. The figure to the left shows the expectancy of heavy rainfall events during these six days while the figure to the right is the prediction of total rainfall amount during this period.



Seasonal Rainfall and Temperature Forecast

Following is the latest seasonal precipitation and temperature prediction for the next 3 months by the IRI. The color shading indicates the probability of the most dominant tercile -- that is, the tercile having the highest forecast probability. The color bar alongside the map defines these dominant tercile probability levels. The upper side of the color bar shows the colors used for increasingly strong probabilities when the dominant tercile is the above-normal tercile, while the lower side shows likewise for the below-normal tercile. The gray color indicates an enhanced probability for the near-normal tercile (nearly always limited to 40%).



Subscribe to our Monthly Maldives Newsletter

Subscribe

Follow @fectmv

Contact Us

email: [fectsl@gmail.com](mailto:fectsl@gmail.com)

phone: (+94) 81 2376746

blog: [www.fectsl.blogspot.com](http://www.fectsl.blogspot.com)

Foundation for Environment, Climate & Technology

C/O Mahaweli Authority of Sri Lanka,

Digana Village,

Rajawella,

SRI LANKA