

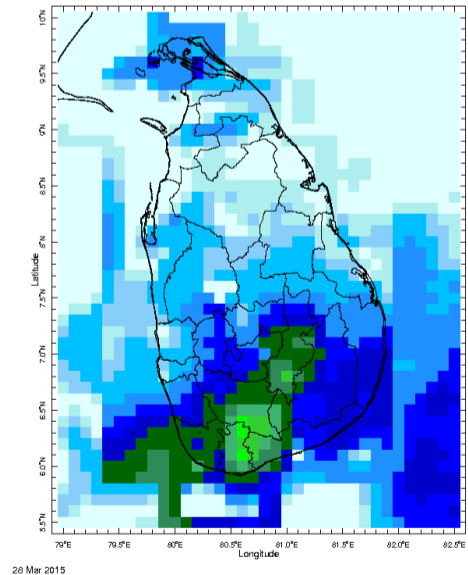
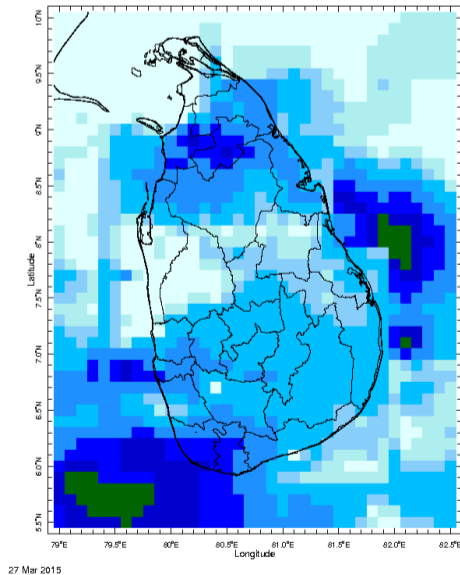
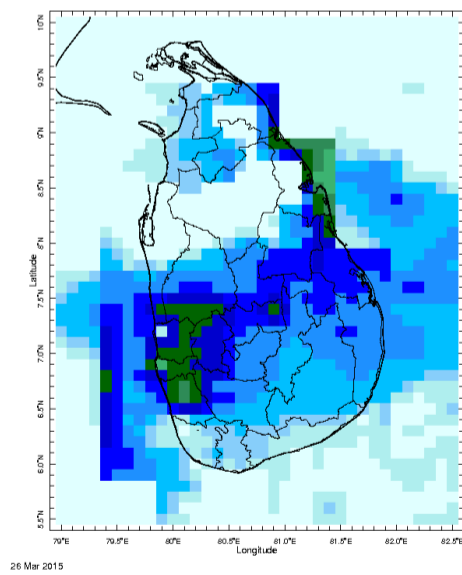
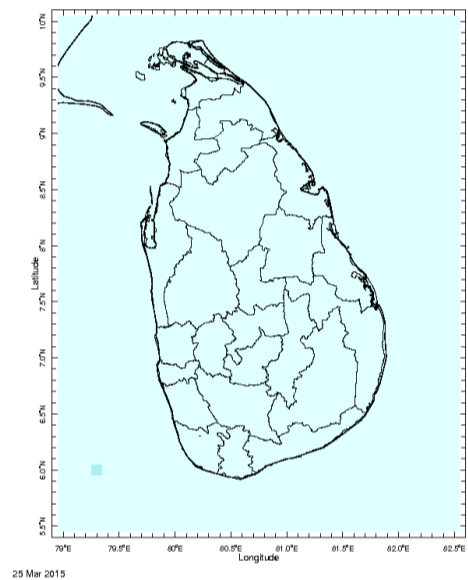
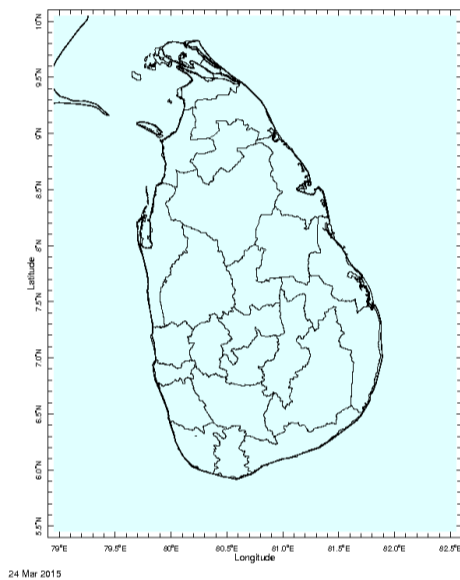
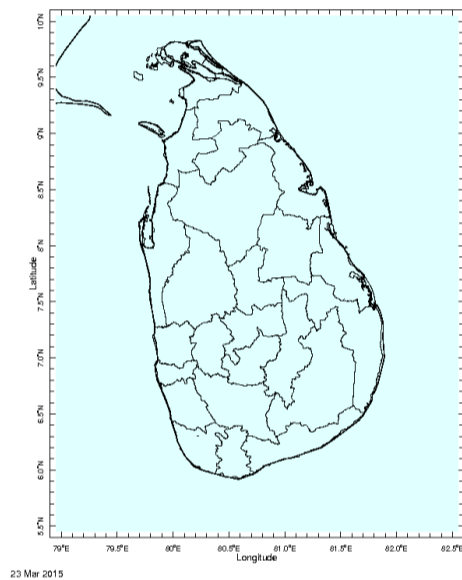
Weekly Hydro- Meteorological Report for Sri Lanka

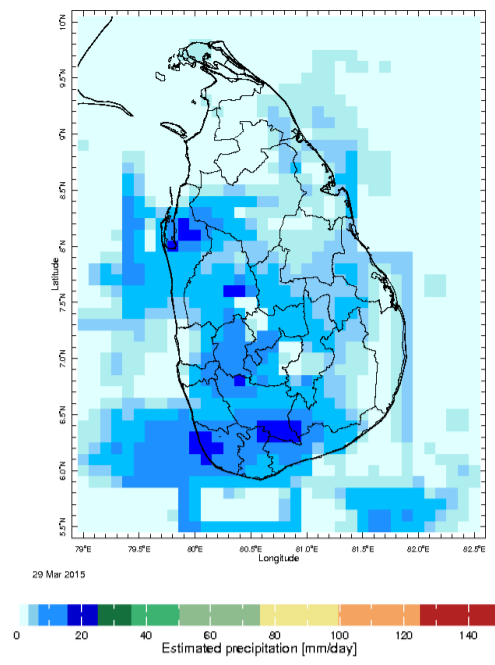
Inside This Issue

1. **Monitoring**
 - a. Daily Satellite derived Rainfall Estimates
 - b. Monthly Rainfall Estimates
 - c. Decadal (10 Day) Satellite Derived Rainfall Estimates
 - d. Weekly Average SST Anomalies
2. **Predictions**
 - a. NCEP GFS Ensemble 1-14 day predictions
 - b. WRF Model Forecast (48 hours and 72 Hours Ahead)
 - c. Weekly Precipitation Forecast from IRI
 - d. Seasonal Predictions from IRI

Daily Rainfall Monitoring

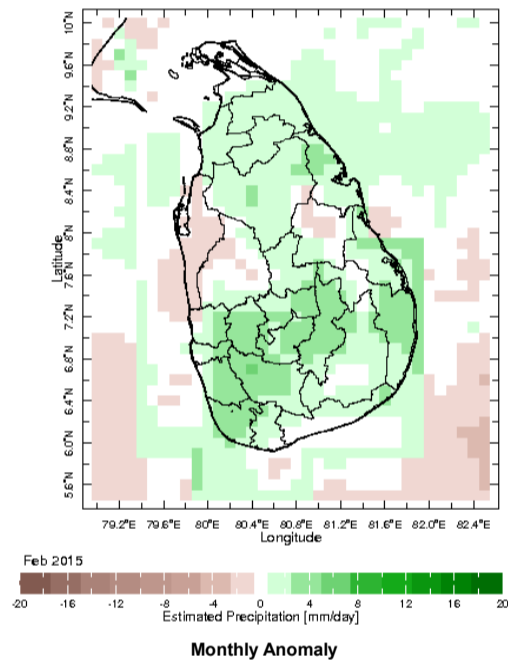
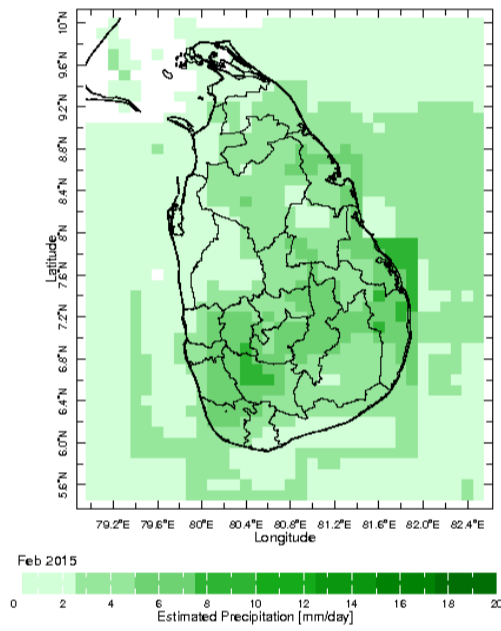
The following figures show the satellite observed rainfall in the last 7 days in Sri Lanka.



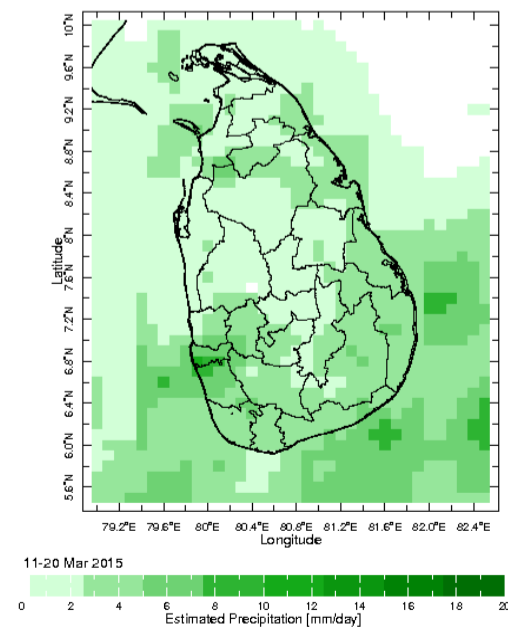
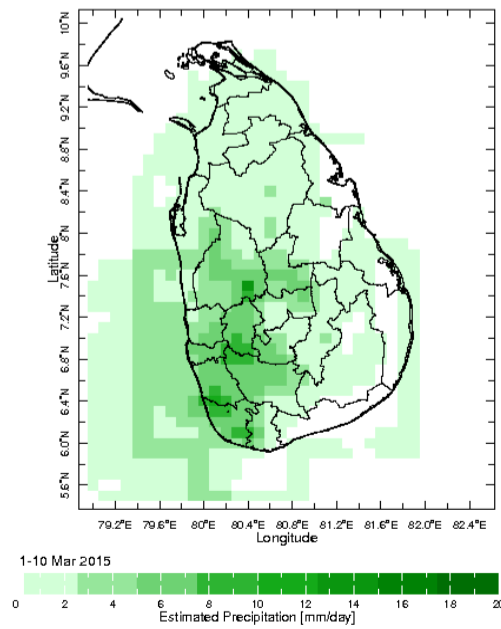


Monthly Rainfall Monitoring

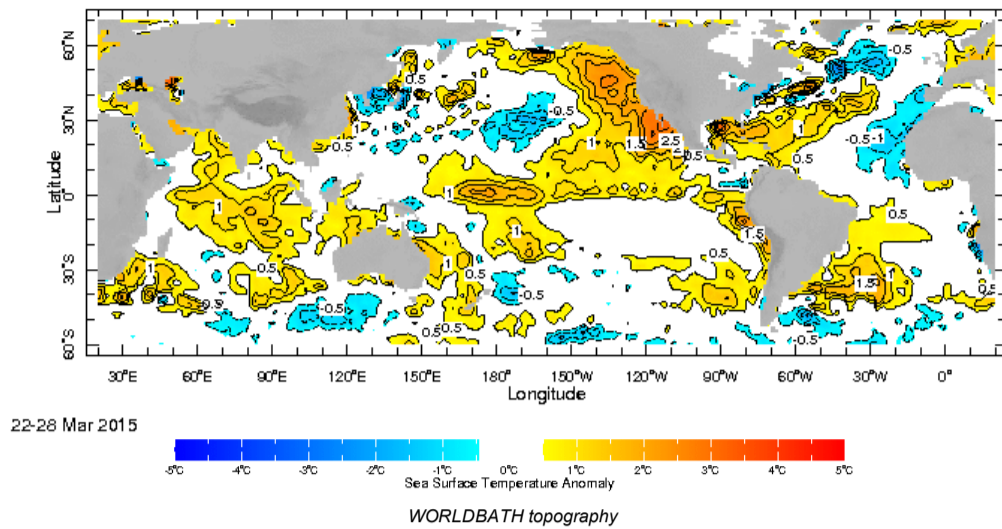
The figure in the left shows the average observed rainfall in the previous month. The rainfall anomaly in the previous month is shown in the figure to the right. The brown color in the anomaly figure shows places which received less rainfall than the historical average while the green color shows places with above average rainfall. Darker shades show higher magnitudes in rainfall



Dekadal (10 Day) Satellite Derived Rainfall Estimates

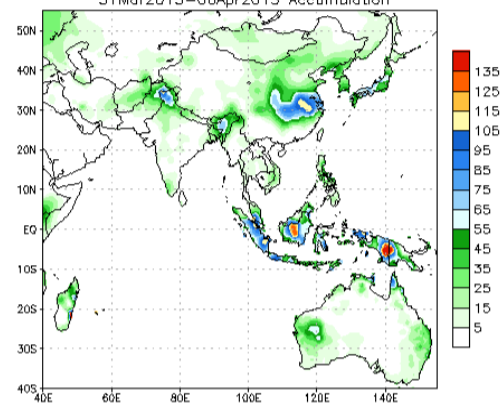


Weekly Average SST Anomalies

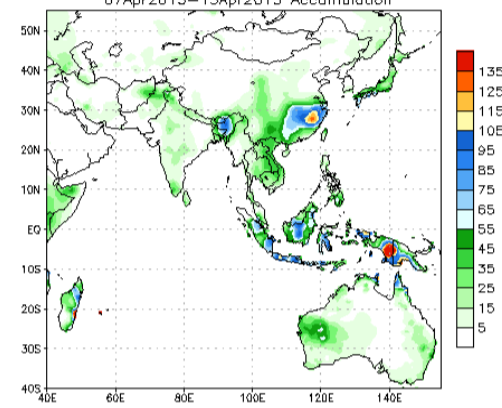


NCEP GFS 1- 14 Day prediction

NCEP GFS Ensemble Forecast 1-7 Day Precipitation (mm)
from: 31Mar2015
31Mar2015-06Apr2015 Accumulation

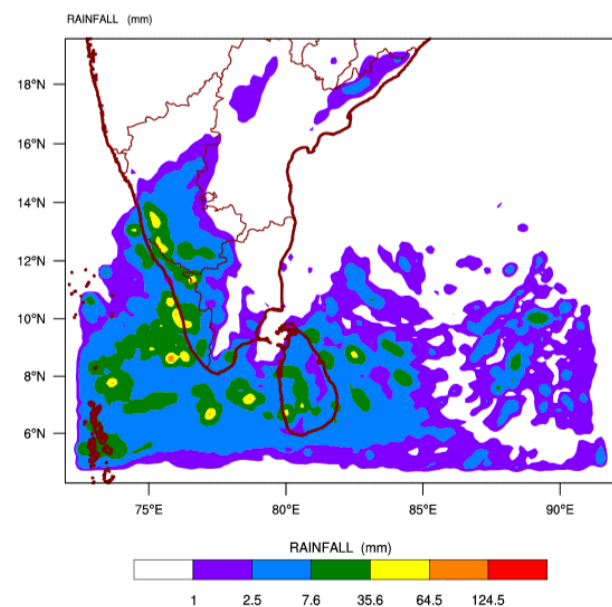


NCEP GFS Ensemble Forecast 8-14 Day Precipitation (mm)
from: 31Mar2015
07Apr2015-13Apr2015 Accumulation

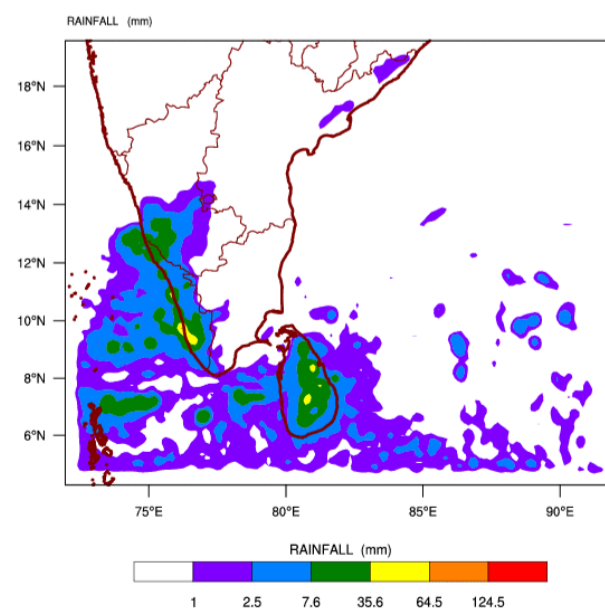


WRF Model Forecast (from IMD Chennai)

WRF MODEL FORECAST (48 HR.) RAINFALL(mm)\
based on 00 UTC of 31-03-2015 valid for 03 UTC of 02-04-2015



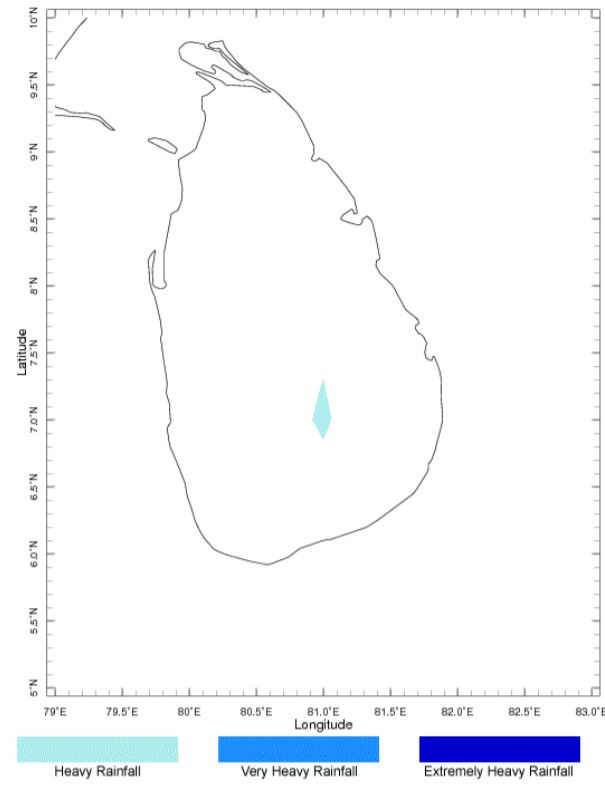
WRF MODEL FORECAST (72 HR.) RAINFALL(mm)\
based on 00 UTC of 31-03-2015 valid for 03 UTC of 03-04-2015



Weekly Rainfall Forecast

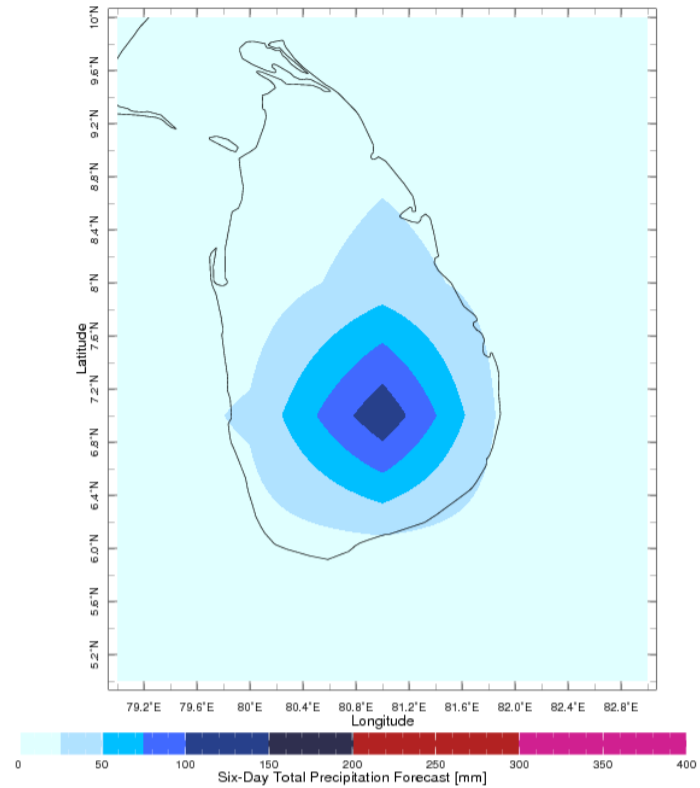
Total rainfall forecast from the IRI for next six days is provided in figures below. The figure to the left shows the expectancy of heavy rainfall events during these six days while the figure to the right is the prediction of total rainfall amount during this period.

Forecast for 31 Mar 2015 - 5 Apr 2015 Issued 0000 31 Mar 2015



Extreme Rainfall Forecast

Forecast for 31 Mar 2015 - 5 Apr 2015 Issued 0000 31 Mar 2015

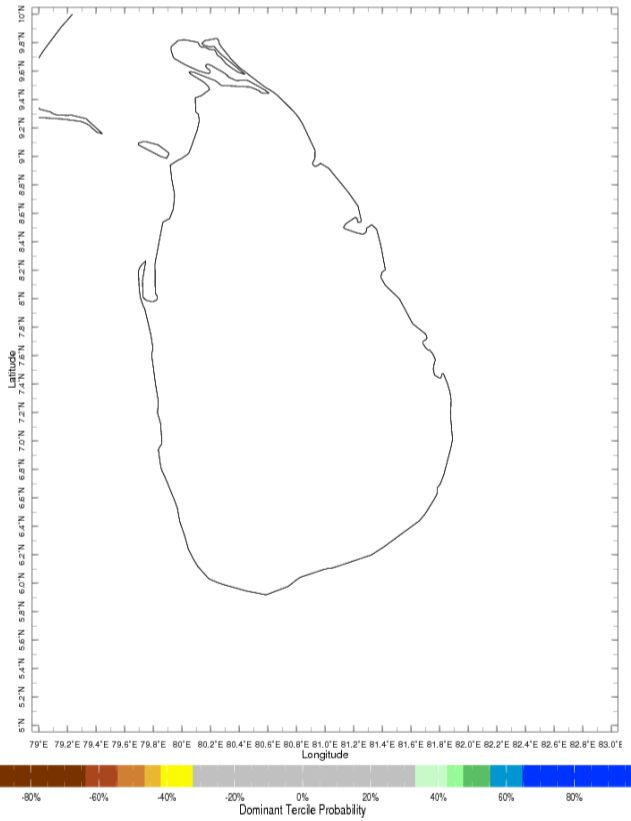


Total Six Day Precipitation Forecast

Seasonal Rainfall and Temperature Forecast

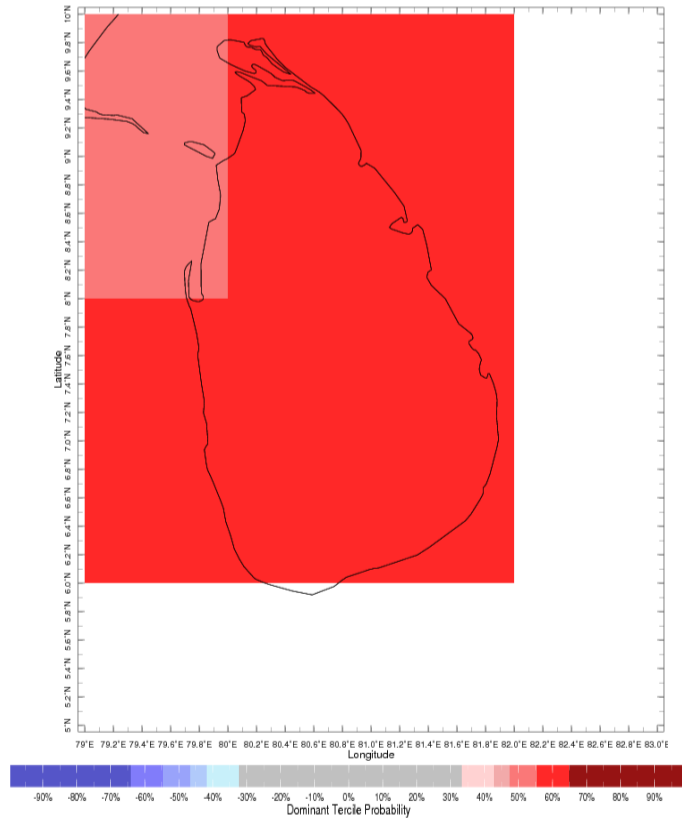
Following is the latest seasonal precipitation and temperature prediction for the next 3 months by the IRI. The color shading indicates the probability of the most dominant tercile – that is, the tercile having the highest forecast probability. The color bar alongside the map defines these dominant tercile probability levels. The upper side of the color bar shows the colors used for increasingly strong probabilities when the dominant tercile is the above-normal tercile, while the lower side shows likewise for the below-normal tercile. The gray color indicates an enhanced probability for the near-normal tercile (nearly always limited to 40%).

Apr-Jun 2015 IRI Seasonal Precipitation Forecast issued Mar 2015



Precipitation Forecast

Apr-Jun 2015 IRI Seasonal Temperature Forecast issued Mar 2015



Temperature Forecast

Subscribe to our Monthly Maldives Newsletter

email address

Subscribe

Follow @fectmv
 Contact Us
 email: fectsl@gmail.com
 phone: (+94) 81 2376746
 blog: www.fectsl.blogspot.com

Foundation for Environment, Climate & Technology
 C/O Mahaweli Authority of Sri Lanka,
 Digana Village,
 Rajawella,
 SRI LANKA