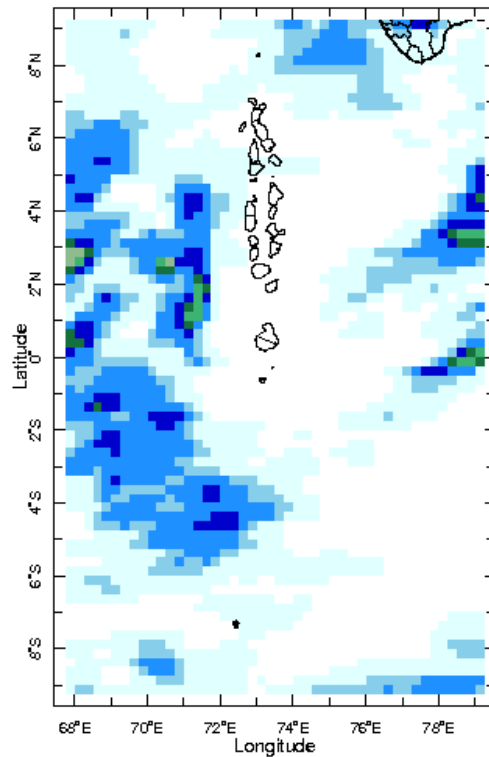
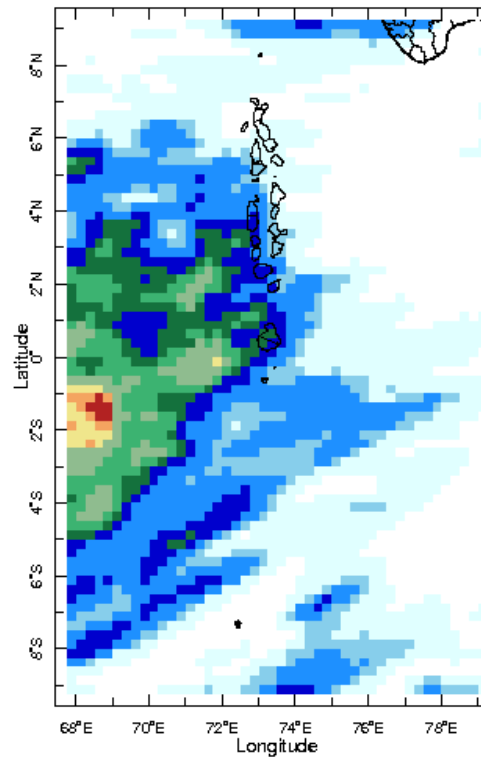


Daily Rainfall Monitoring

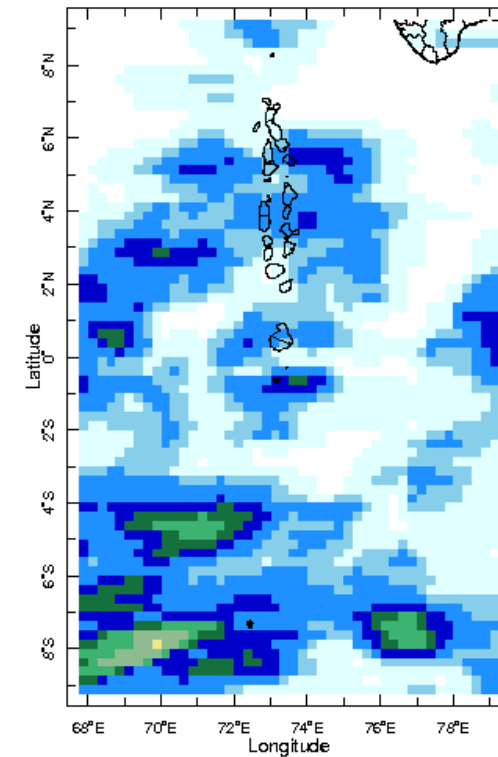
The following figures show the observed rainfall in the last 15 days in Maldives.



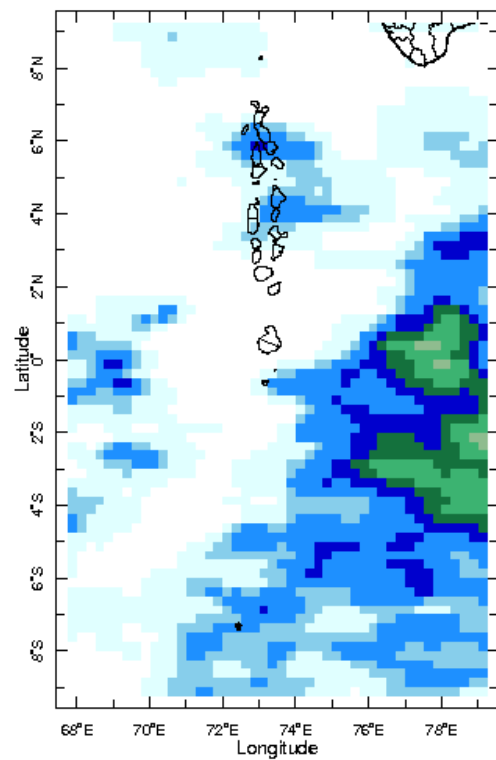
17 Aug 2019



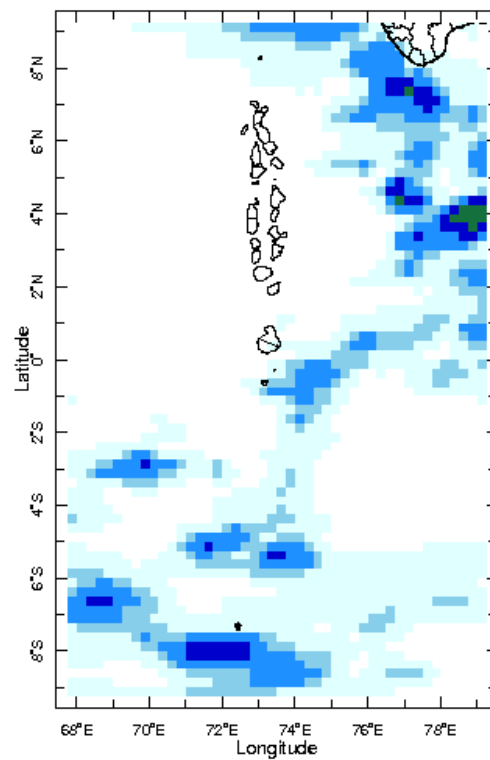
18 Aug 2019



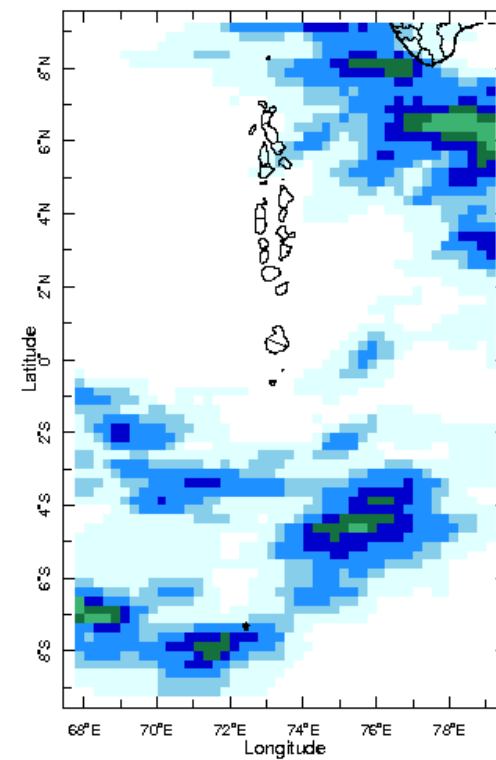
19 Aug 2019



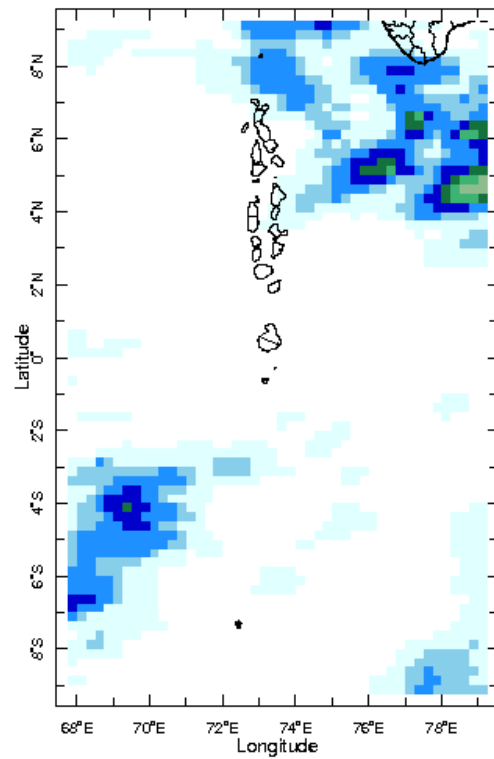
20 Aug 2019



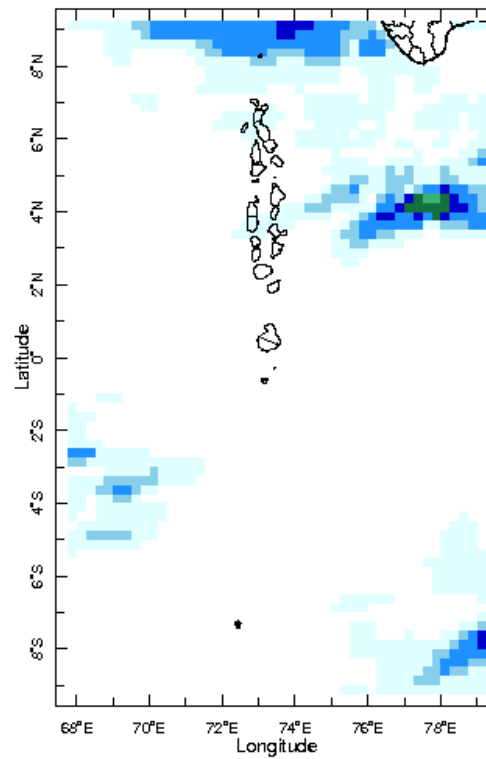
21 Aug 2019



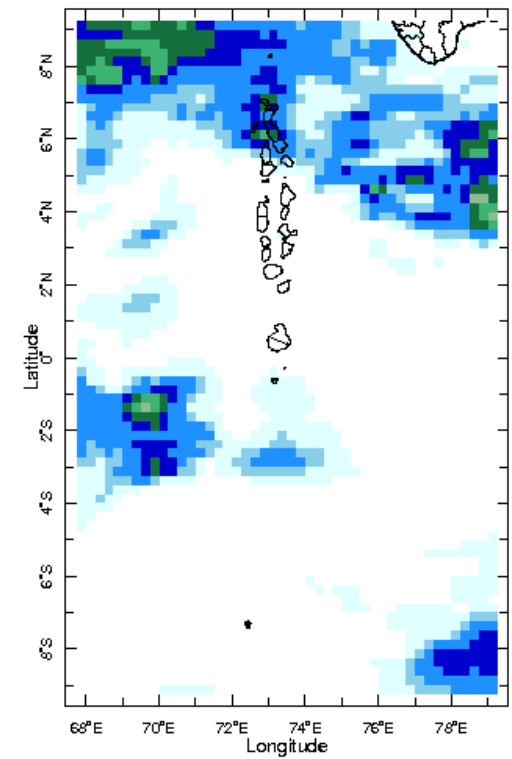
22 Aug 2019



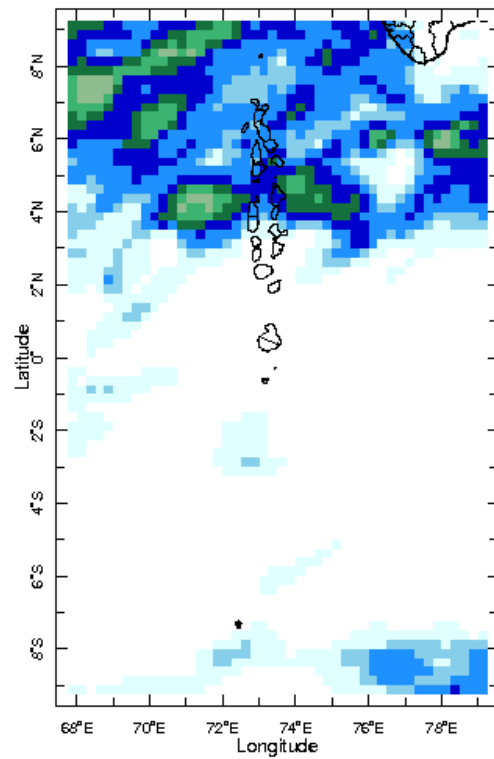
23 Aug 2019



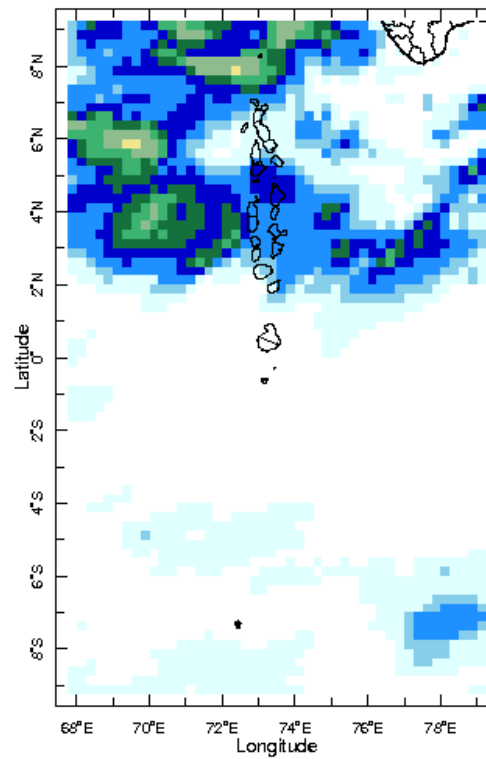
24 Aug 2019



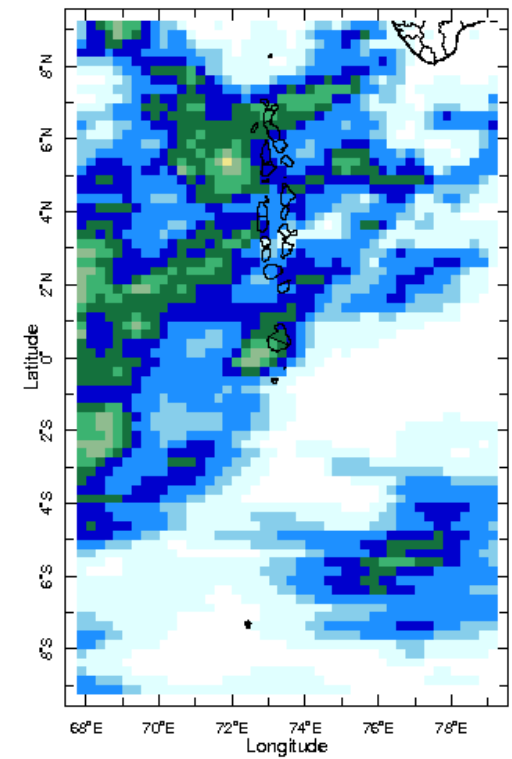
25 Aug 2019



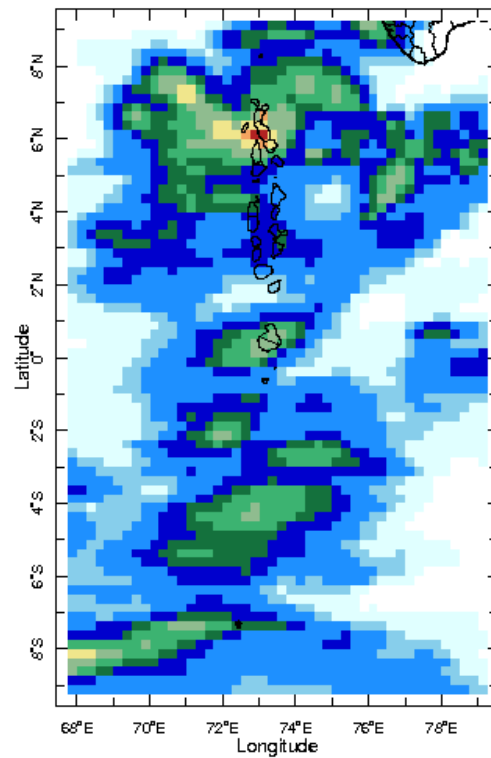
26 Aug 2019



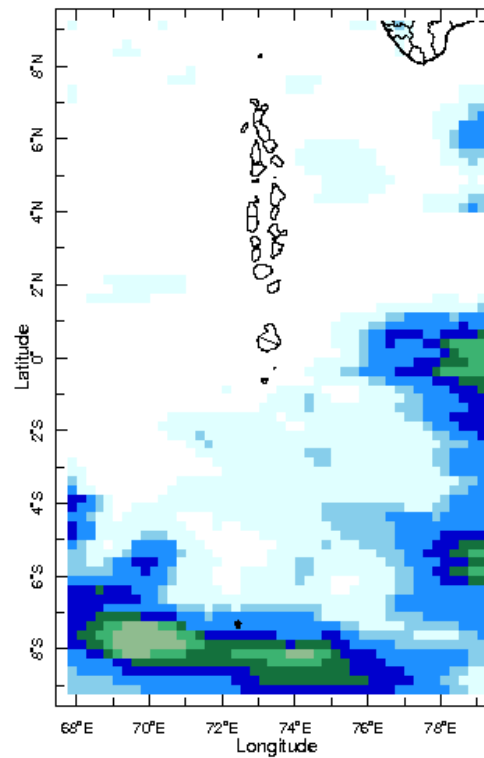
27 Aug 2019



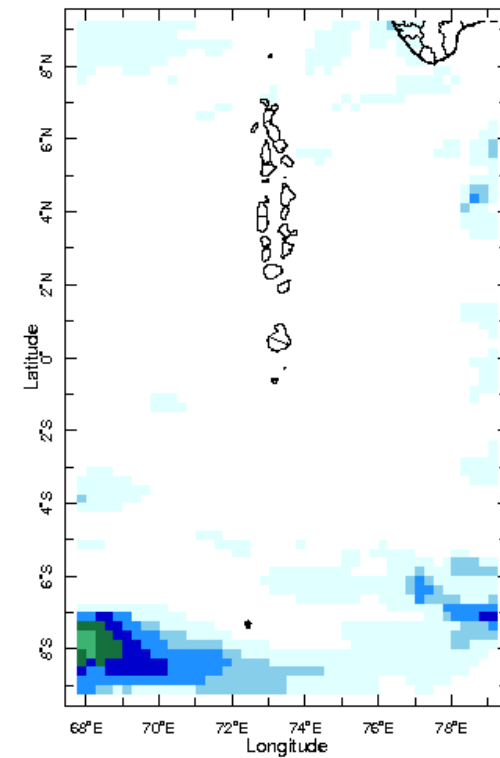
28 Aug 2019



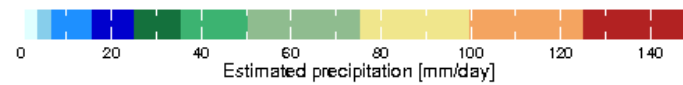
29 Aug 2019



30 Aug 2019

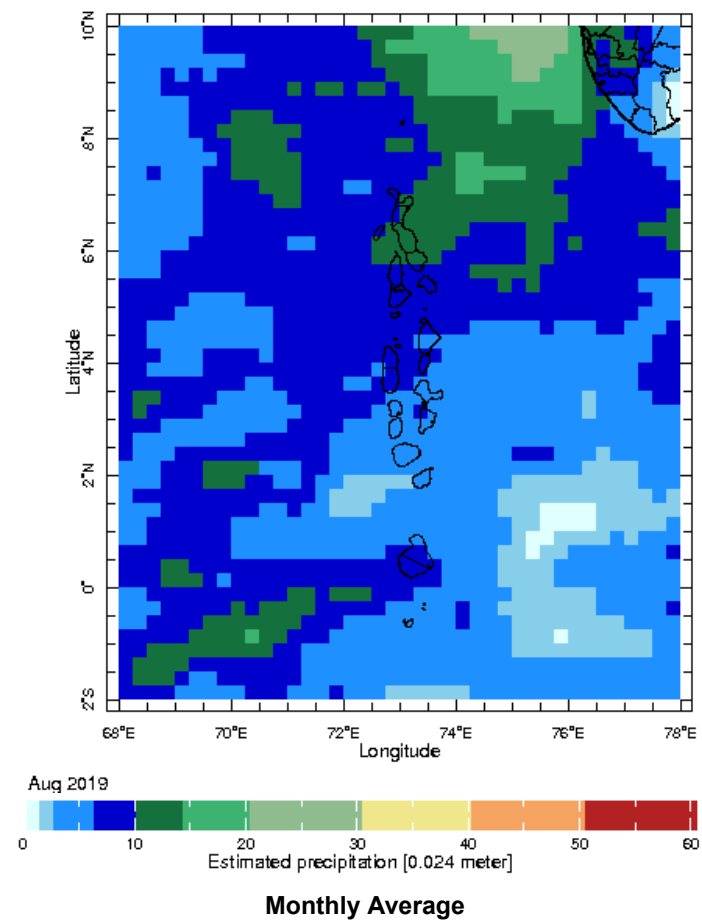


31 Aug 2019



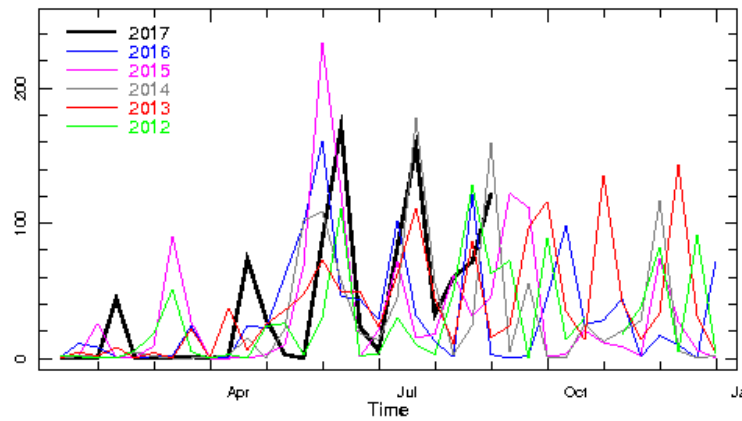
Monthly Rainfall Monitoring

The figure shows the average observed rainfall in the previous month.



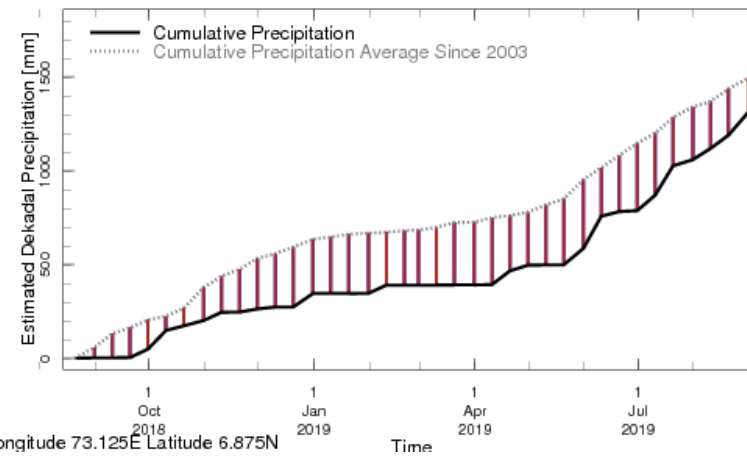
Monthly and Seasonal Monitoring

Northern Maldives:



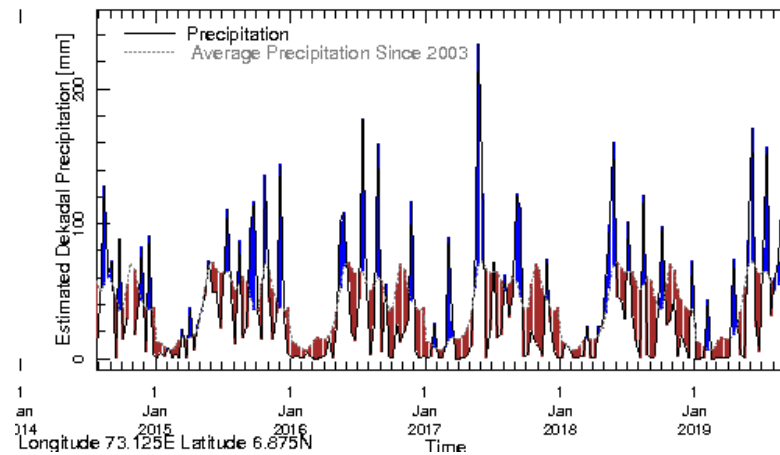
Longitude 73.125E Latitude 6.875N

Rainfall in the current year (black) compared to rainfall in previous 5 years



Longitude 73.125E Latitude 6.875N

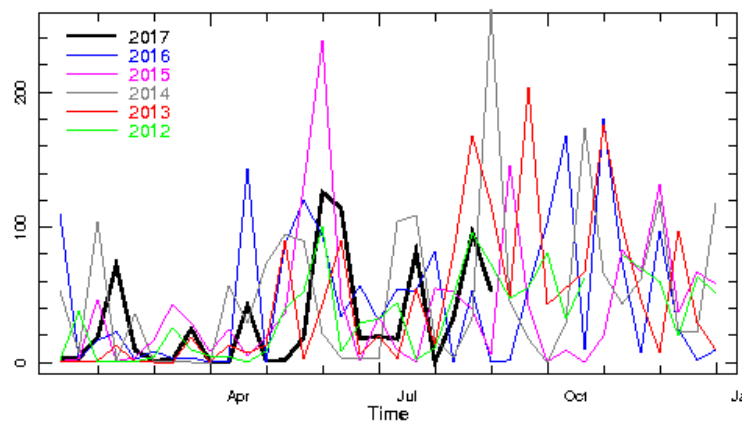
Rainfall of past 365 days (black) compared to average rainfall since 2003.



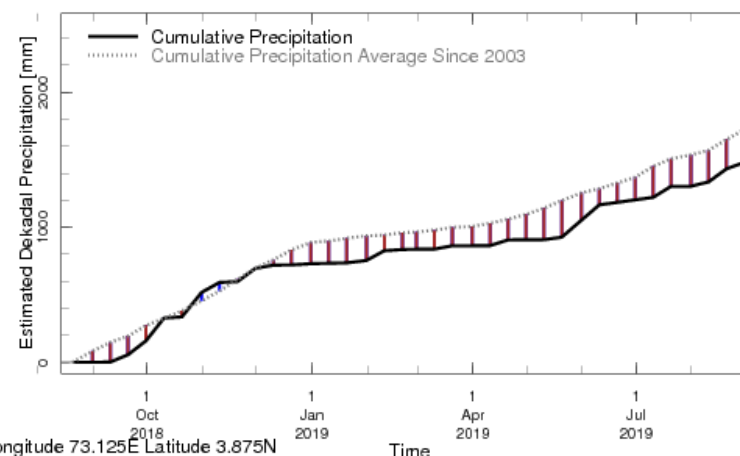
Longitude 73.125E Latitude 6.875N

Rainfall in the past 5 years with above-average rainfall hatched in blue and below-average hatched in brown

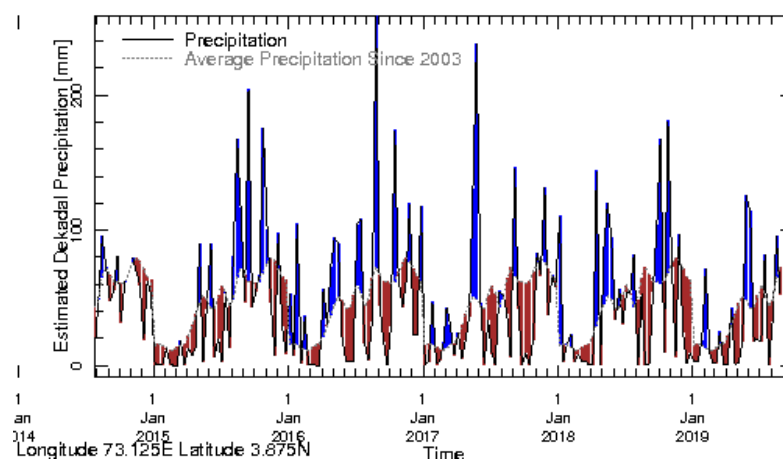
Central Maldives:



Rainfall in the current year (black) compared to rainfall in previous 5 years

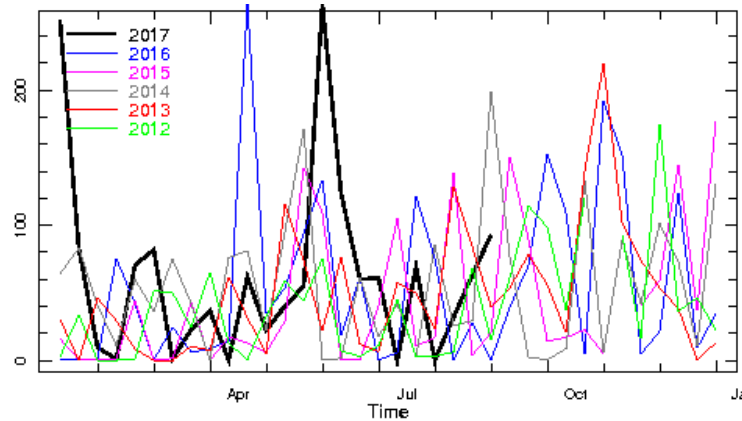


Rainfall of past 365 days (black) compared to average rainfall since 2003.

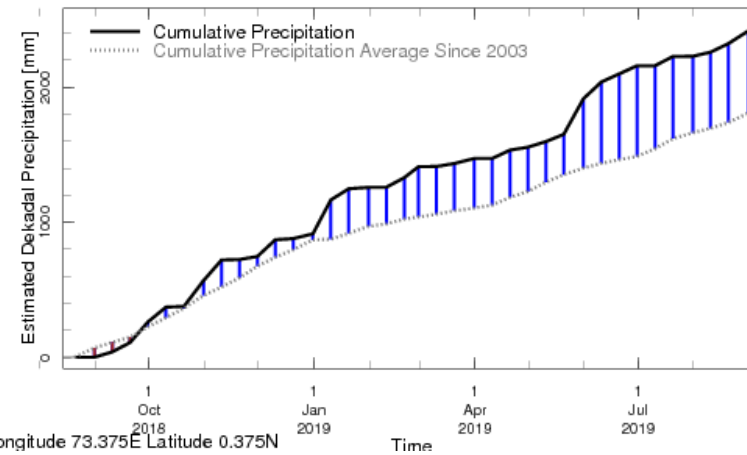


Rainfall in the past 5 years with above-average rainfall hatched in blue and below-average hatched in brown

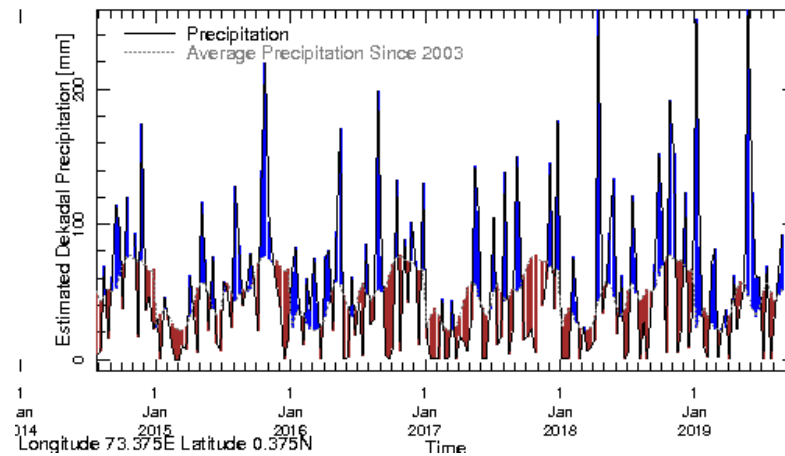
Southern Maldives:



Rainfall in the current year (black) compared to rainfall in previous 5 years



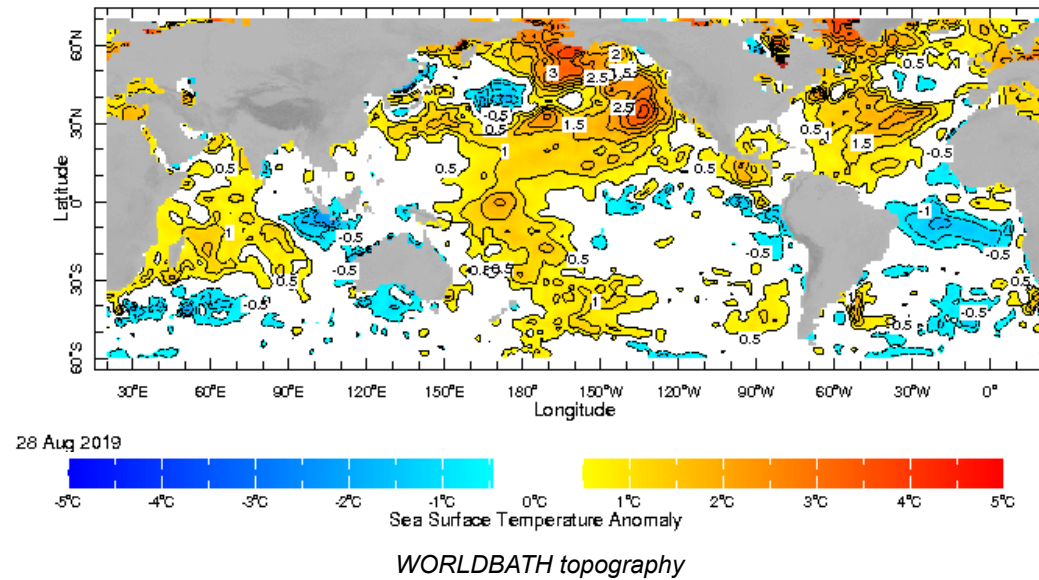
Rainfall of past 365 days (black) compared to average rainfall since 2003.



Rainfall in the past 5 years with above-average rainfall

hatched in blue and below-average hatched in brown

Ocean Surface Monitoring

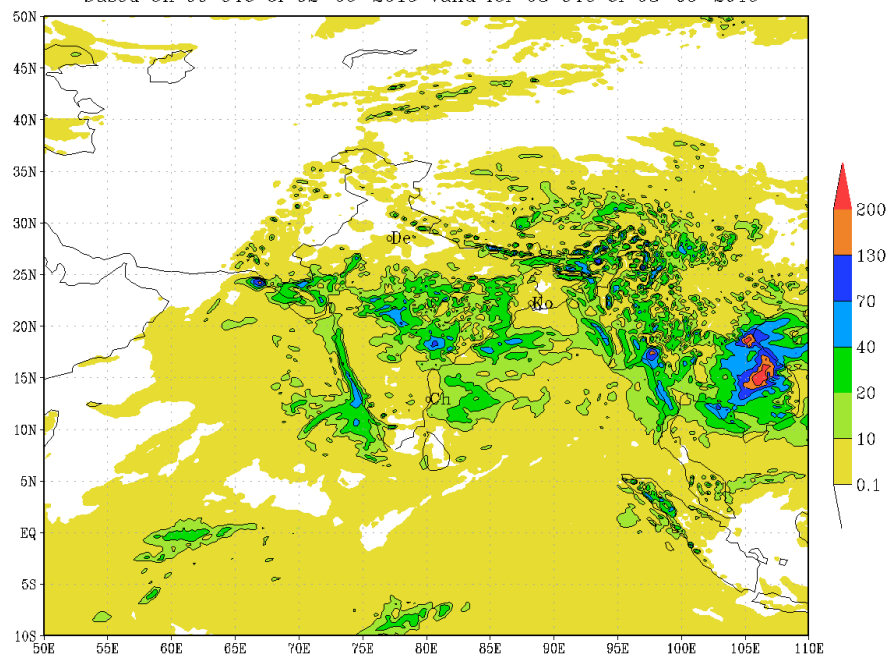


Daily Rainfall Forecast

Daily Rainfall forecasts (up to 7 days ahead) from the IMD is provided in figures below. These predictions are from the GFS (T1534) model covering the entire south Asian region.

IMD :GFS MODEL(12 Km) RAINFALL (mm) FORECAST (24 HR)

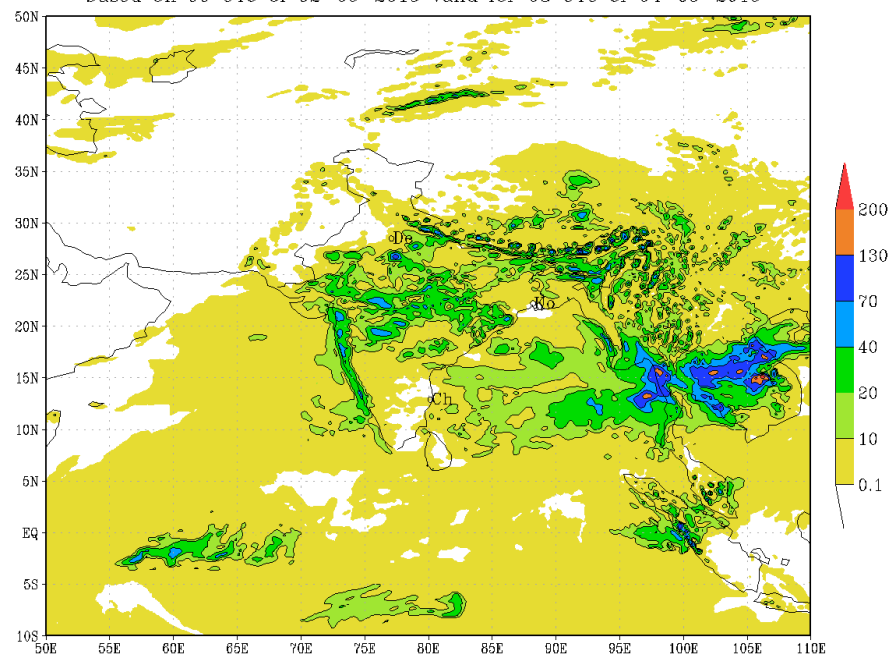
based on 00 UTC of 02-09-2019 valid for 03 UTC of 03-09-2019



(Background does not depict political boundary)

IMD :GFS MODEL(12 Km) RAINFALL (mm) FORECAST (48 HR)

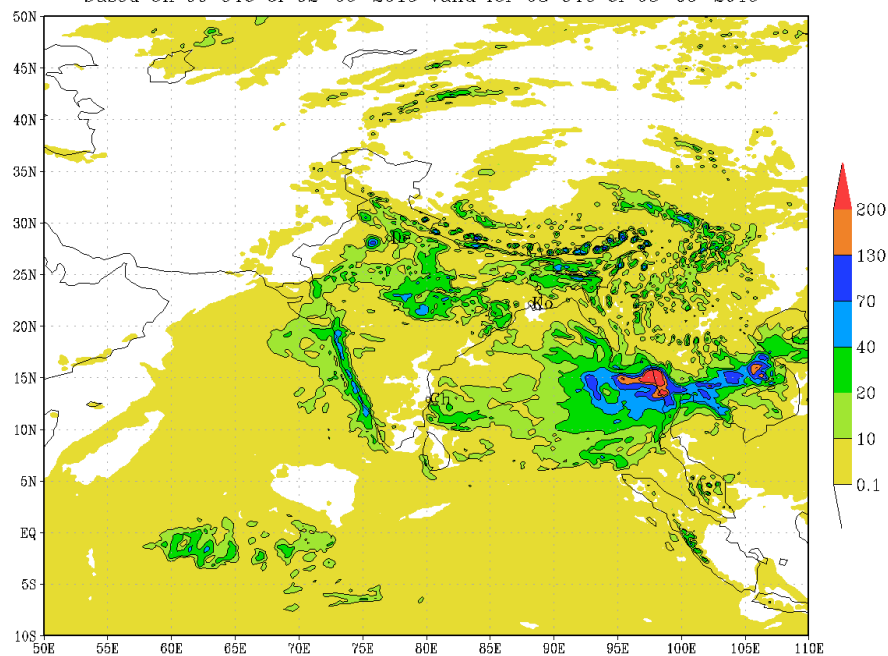
based on 00 UTC of 02-09-2019 valid for 03 UTC of 04-09-2019



(Background does not depict political boundary)

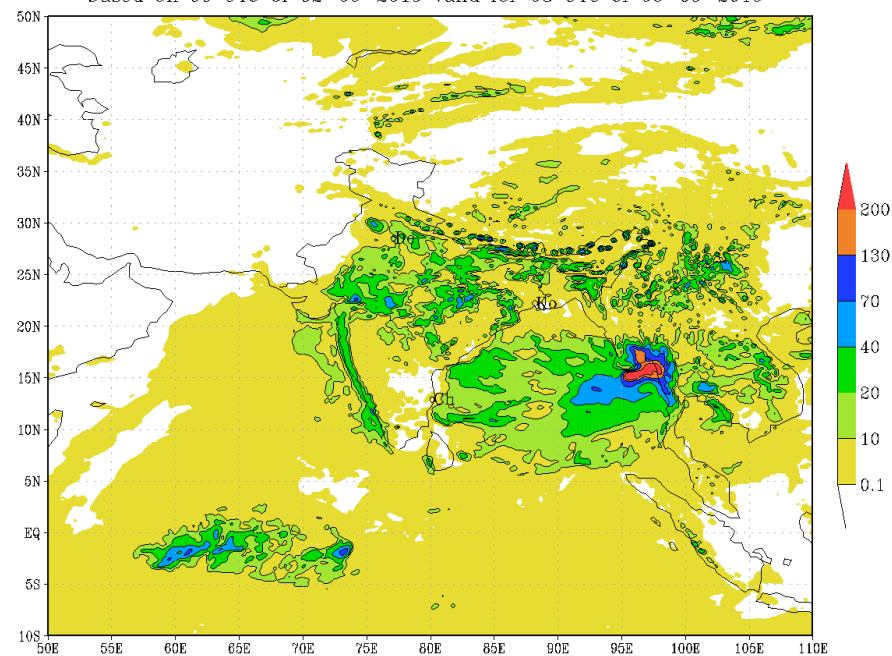
IMD :GFS MODEL(12 Km) RAINFALL (mm) FORECAST (72 HR)

based on 00 UTC of 02-09-2019 valid for 03 UTC of 05-09-2019



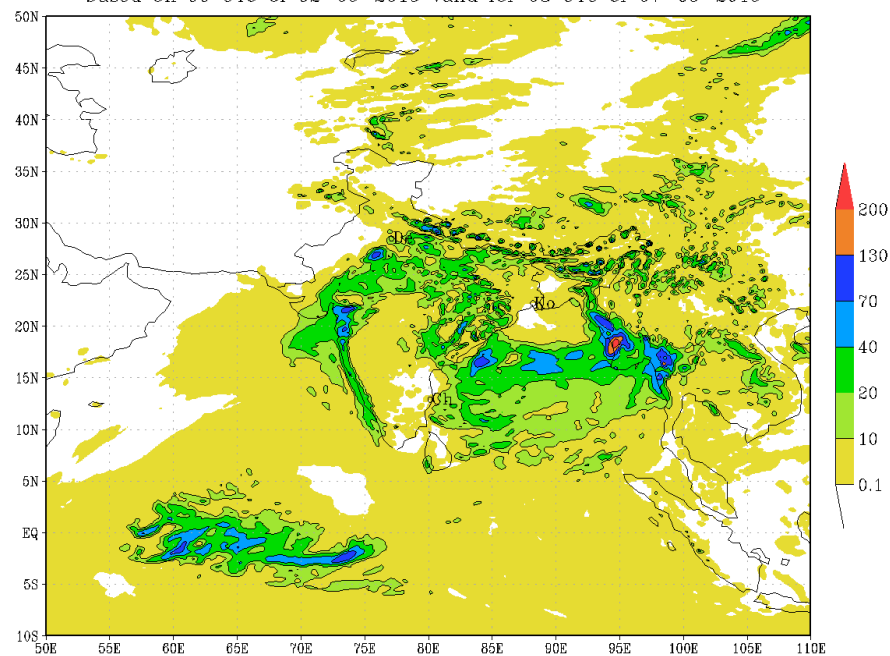
IMD :GFS MODEL(12 Km) RAINFALL (mm) FORECAST (96 HR)

based on 00 UTC of 02-09-2019 valid for 03 UTC of 06-09-2019



IMD :GFS MODEL(12 Km) RAINFALL (mm) FORECAST (120 HR)

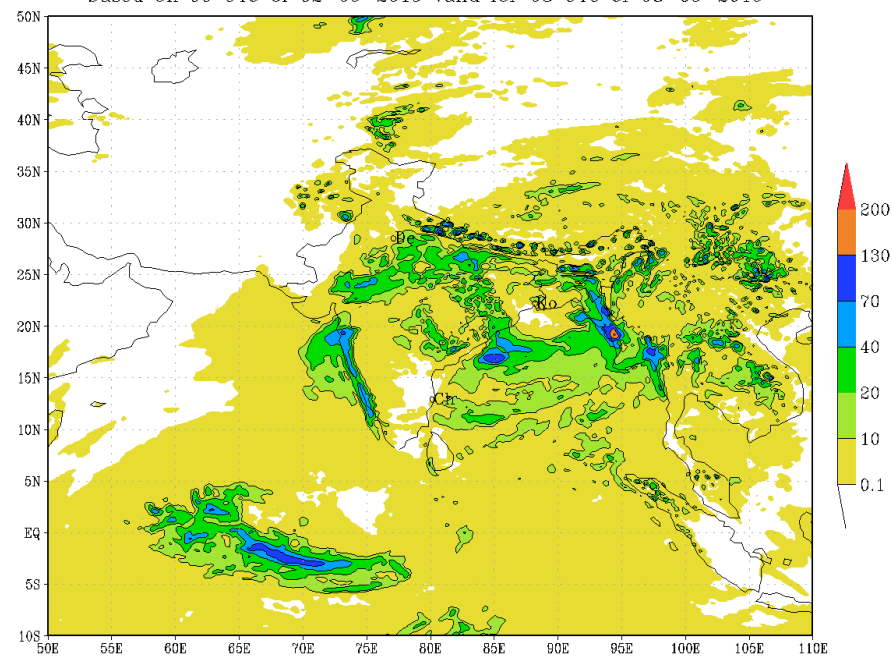
based on 00 UTC of 02-09-2019 valid for 03 UTC of 07-09-2019



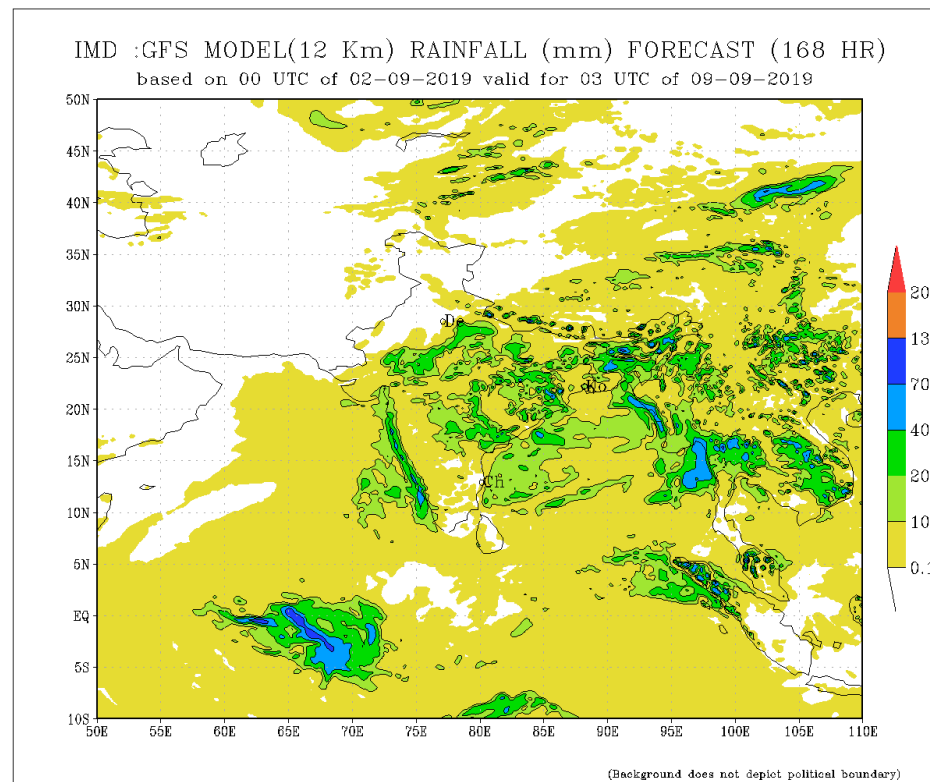
(Background does not depict political boundary)

IMD :GFS MODEL(12 Km) RAINFALL (mm) FORECAST (144 HR)

based on 00 UTC of 02-09-2019 valid for 03 UTC of 08-09-2019



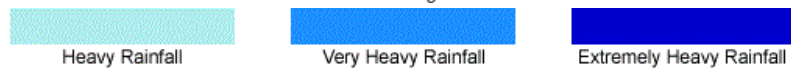
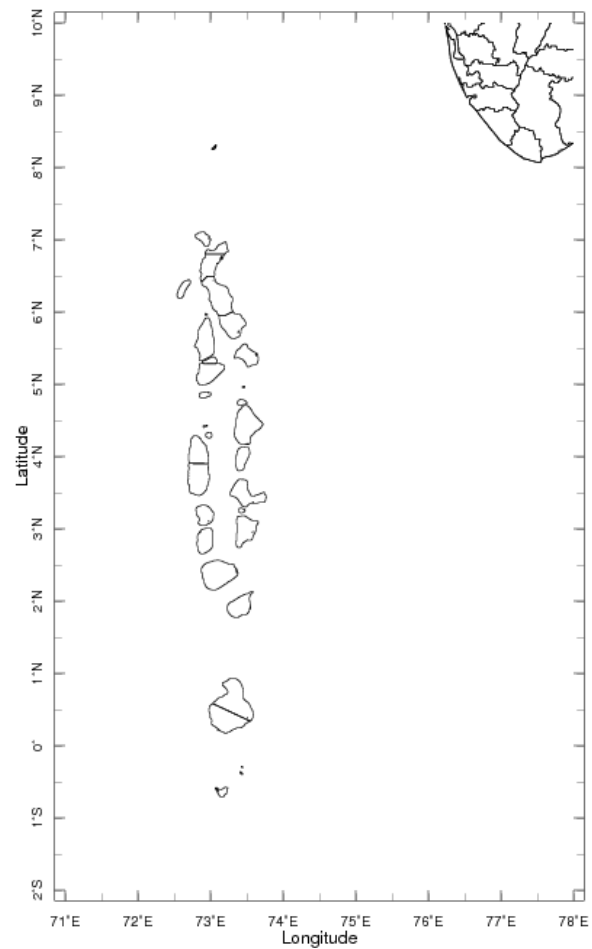
(Background does not depict political boundary)



Weekly Rainfall Forecast

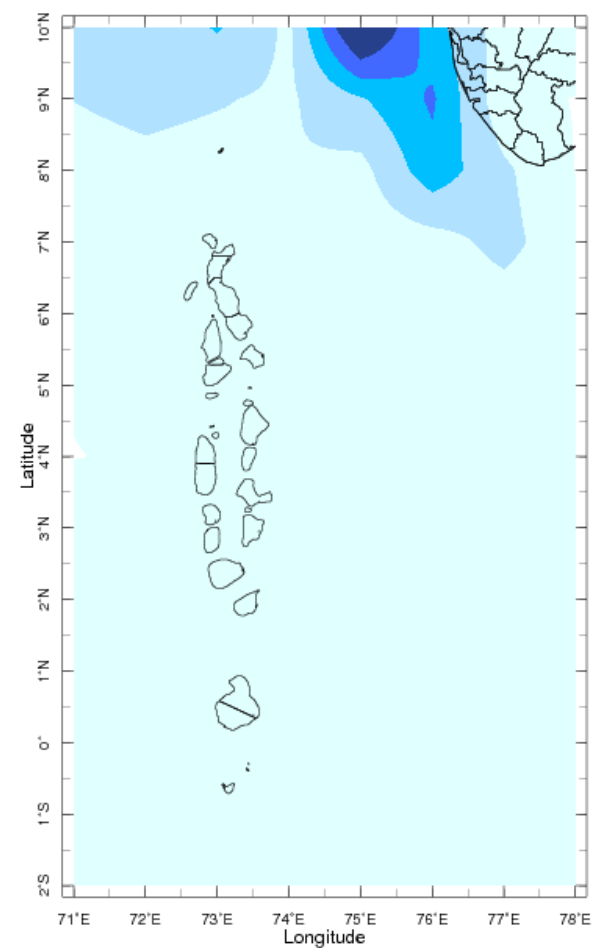
Total rainfall forecast from the IRI for next six days is provided in figures below. The figure to the left shows the expectancy of heavy rainfall events during these six days while the figure to the right is the prediction of total rainfall amount during this period.

Forecast for 1-6 Sep 2019 Issued 0000 1 Sep 2019



Extreme Rainfall Forecast

Forecast for 1-6 Sep 2019 Issued 0000 1 Sep 201



Total Six Day Precipitation Forecast