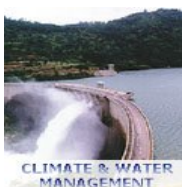
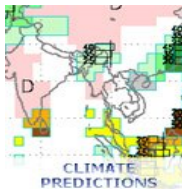
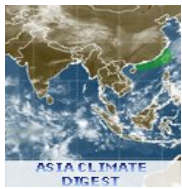


Foundation for Environment, Climate and Technology

To advance the application of science for societal welfare

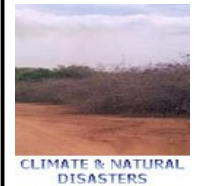
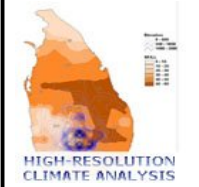
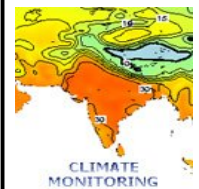


Our Contributions

The Foundation for Environment, Climate and Technology (FECT) was registered as a non-profit company in 2003 to consolidate a decade of research, adaptation projects, and infrastructure development and sustain capacity. We contribute to climate, hydrology, adaptation, information technology, publishing and engineering for sustainable development. Our charter requires us to work towards societal welfare.

Current Projects

- [Assessing predictability of seasonal rainfall in the Kelani river basin in Sri Lanka](#) (2007–to date): We are developing predictions of seasonal stream flow based on climate. Funded by the International Foundation for Science. PI: Janaki Chandimala
- [Launching a Masters in Development Practice at the University of Peradeniya](#) (2009-2011): We support curriculum development, teaching, research and field placements. We shall undertake research projects in Sri Lanka and Maldives. Funded by MacArthur Foundation. Co-PI's: Lareef Zubair and Zeenas Yahiya.
- [Regional and Seasonal variation of Dengue Risk in Sri Lanka and its relationship to Climate](#) (2010-2011): We characterize dengue incidence in Kandy, Sri Lanka and its relationship to climate. Funded by WHO. – PI: Zeenas Yahiya
- [Climate Change Impacts on Seasonally and Intermittently Open Tidal Inlets](#) (2009-2013): We shall characterize the seasonal and regional variation of stream flow under climate change forcing as provided by CSIRO. Funded by UNESCO, PI: Sarith Mahanama
- [Pro-bono \(2000-to date\)](#)
We have assisted Tsunami relief; assisted community based organizations with project development and are supporting school programs. We also provide technical assistance for activities at the Mahaweli Authority of Sri Lanka.



Vision

To sustain a center of excellence in climate, environmental and information technologies and related areas where research is pursued; technological capability is advanced, and where all of this is used to execute socially valued projects.

Further Information

Brochure: Is available at websites or on request.

Websites:

<http://www.climate.lk>

<http://www.tropicalclimate.org>

<http://www.geolanka.net>

<http://www.recoverlanka.net>

Contact Details

Address: FECT, c/o Maintenance Office
Mahaweli Headworks Division
Digana Village, Rajawella, Sri Lanka.

Email: climate@slt.net.lk
fectsl@gmail.com

Telephone: +94-81-2376746
+94-81-4922992 (Board)

Institutional Profile

Company Name: Foundation for Environment,
Climate and Technology.

Registration No: N(A)1148 & GA 56 (from 2008)

Date of Incorporation: 31st December, 2003

Company Secretary: Ralapanawe Associates

Auditor: Anzari & Company

Bankers: Peoples Bank, Hatton National Bank

Collaborations

We have collaborated with:

Sri Lankan Institutions
 Mahaweli Authority of Sri Lanka
 National Water Resources Authority
 Department of Meteorology
 University of Peradeniya
 International Water Management Institute
 Anti Malaria Campaign
 Coconut Research Institute
 Tea Research Institute
 Department of Wildlife Conservation
 Open University of Sri Lanka
 University of Jaffna
 Eastern University of Sri Lanka
 Sabaragamuwa University

International Institutions
 International Research Institute of
 Climate and Society, New York
 Earth Institute at Columbia University
 Indian Institute of Tropical Meteorology
 Indian Institute of Science
 Frontier Research System for Global
 Change - Japan
 National Aeronautical and Space
 Agency (NASA) – Maryland, USA.
 Maldives Ministry of Environment
 Botswana Meteorological Service
 Consortium for Capacity Building, Uni. Colorado.

Officers

Ranmalee Bandara - Scientist
 Janaki Chandimala - Engineer
 Sewwandhi Chandrasekara - Scientist and MDP Coordinator
 Sanjaya Ratnayake - Scientist
 Madhura Weerasekera - Scientist
 Rimza Zacky - Accountant
 Zeenas Yahiya - Social Scientist and Manager
 Lareef Zubair - Principal Scientist

Advisors

Sarith Mahanama - Hydro-meteorologist
 Vidhura Ralapanawe - Information Technology
 P. Wickramagamage - Geographer
 Neil Devadasan - Systems Engineer
 Ruvini Perera - Hydrologist
 Sabry Razick - Bio-Informatics
 Ramany Sritharan - Agriculture
 Manoharadas Manobavan - Earth System Science
 Nalin Wickramanayake - Coastal and Water Resources

Alumni

Heli Bulathsinhala - Engineer (2001-2)
 C. Wickremasinghe - Data Entry (2002-2)
 Upamala Tennakoon - GIS (2002-7)
 Kusalika Ariyaratne - Engineer (2002-3)
 Siraj Razik - IT Engineer (2002-6)
 Irugal Bandara - Scientist (2002-3)
 Manjula Siriwardhana - Engineer (2004-7)
 Amal Tilakaratne - Data Entry (2006-7)
 Champika Jayathilaka - Scientist (2007)
 Amila Karunaratne - Web (2007-8)
 Susanthi Liyanaarachchi - Engineer (2008-9)
 Mohamed Nasly - Scientist (2009-10)
 Badra Nawaratne - Civil Engineer (2006-10)
 Yoosuf Ashraj - Research Assistant (2008-9)
 Sanira Tennakoon - Research Assistant (2008-9)
 Chandrika De Silva - Communications (2010)
 Sumudu Adhikari - Scientist (2008-2010)

Completed Projects

- [Climate Information for Mahaweli River Basin Management](#) (2000-to date):
 We collaborated with the International Research Institute for climate and society (IRI) and the Mahaweli Authority to identify the potential use of seasonal climate information for water resource and environmental management.
- [Climate Change and Variability and Tea and Coconut Plantations in Sri Lanka](#) (2002–6):
 We collaborated with the Tea and Coconut Research Institutes and the Department of Meteorology supported by the System for Analysis, Research and Training through the Sri Lanka Association for Advancement of Science.
- [Climate Variability and Rice Production in Sri Lanka](#) (2000-2):
 Investigate relationship between rice production in Sri Lanka and El Nino. Supported by UCAR fellowship.
- [Climate and Human-Elephant Conflict](#) (2001–4):
 We identified the climate influences on human elephant conflict in Sri Lanka. Funded by the Earth Institute
- [Climate and Natural Disaster Risk](#) (2002–5):
 The risks posed by multiple natural hazards (droughts, floods, landslides and cyclones) in Sri Lanka were identified. This effort was funded by the World Bank and IRI.
- [Malaria Risk Mapping and Early Warning Systems](#) (2003–7):
 We contributed to a project on climate and malaria in Sri Lanka in collaboration with the IRI, IWMI and others to develop an early warning system for malaria risk. Funded by NOAA.
- [Assessing drought and enabling adaptation through rainwater harvesting at Idamelanda](#) (2007-9):
 Scarcity assessments climate analysis was developed to support Rain Water Harvesting policy, design and operations in Hanguranketha. Funded by the Provention Consortium.
- [ENSO Impacts on Cereals in Sri Lanka](#) (2010):
 We assessed the regional impact of climate on Rice in Sri Lanka. Funded by FAO through the University of Philippines. PI- Zeenas Yahiya