

HIGHLIGHTS

Rainfall Prediction



• Heavy rainfall (≥ 115 mm) is predicted for the Sabaragamuwa, Southern, Western provinces and fairly heavy rainfall (≥ 65 mm) is predicted for the Uva, Central, North Western provinces during 21 - 27 Sep.

Monitored Rainfalls



• During the last week, average daily rainfall over Sri Lanka was 21.1 mm and hydro catchment areas received 6.7 mm.
• Highest average rainfall of 17.9 mm/day received Western plains.

Monitored & Predicted Wind



• From 12 - 18 Sep, up to 15 m/s of west-southwesterly winds were at 850 mb (1.5 km).
• During 22 - 28 Sep, up to 10 m/s of northwest-southwesterly winds are expected at 850 mb (1.5 km).

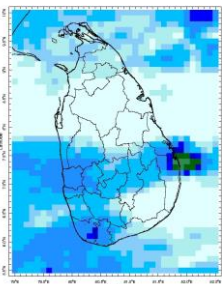
Monitored Sea & Land Temp



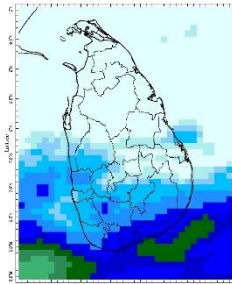
• Sea surface temperature around Sri Lanka was 0.25 - 1.5°C above normal.
• From 13 - 20 Sep, maximum daily temperature was recorded in Polonnaruwa (38.3°C) and Mullaitivu (37.0°C).

Monitoring Rainfall

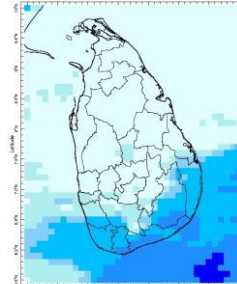
Daily Estimates for Rainfall from 13th September - 20th September 2023



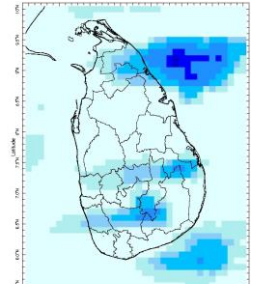
13 September



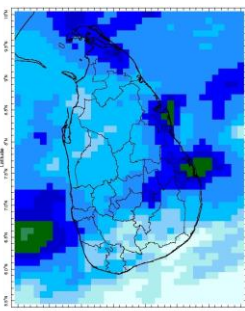
14 September



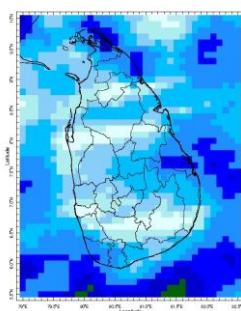
15 September



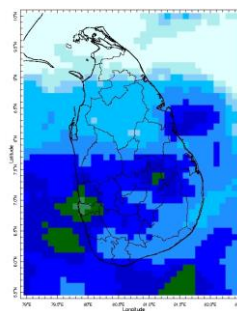
16 September



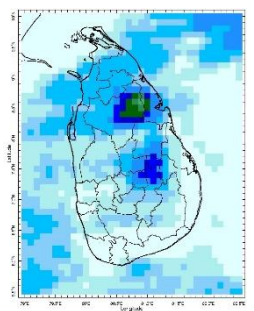
17 September



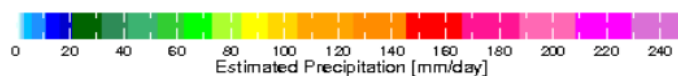
18 September



19 September



20 September



Federation for Environment, Climate & Technology

Federation for Environment, Climate and Technology

c/o, Maintenance Office, Mahaweli Authority, Digana Village, Rajawella, Sri Lanka.

Phone (+94) 81-2376746, (+94) 81-2300415

Web Site: www.fect.lk

E mail: info@fect.lk

LI: www.linkedin.com/in/fectlk

FB: www.facebook.com/fectlk

TW: www.twitter.com/fectlk

Ocean State *(Text Courtesy IRI)*

Pacific sea state: September 18, 2023

El Niño Mode has set in according to NOAA since 8th of June. Equatorial sea surface temperatures (SSTs) are above average across the central and eastern Pacific Ocean mid-September. El Niño conditions will continue through the Northern Hemisphere winter (with greater than a 95% chance through January - March 2024).

Indian Ocean State

Sea surface temperature around Sri Lanka was 0.5 °C above normal to the Western, Southern, and Northern half of the country in 29th August - 4th September, 2023. A positive Dipole Mode has set in across the Indian Ocean since 8th of June.

Predictions

Rainfall

14 - day prediction: NOAA NCEP models

From 21st September - 27th September:

Total rainfall by Provinces:

Rainfall (mm)	Provinces
125	Southern, Sabaragamuwa
115	Western
85	Uva, Central
65	North Western
45	Eastern
25	North Central
≤ 15	Northern

From 28th September - 4th October:

Total rainfall by Provinces:

Rainfall (mm)	Provinces
≥ 135	Southern, Sabaragamuwa, Western
105	Uva, Central
85	North Western
65	Eastern
25	North Central
≤ 15	Northern

MJO based OLR predictions

For the next 15 days:

MJO shall near neutral the rainfall during 21st September - 5th October for Sri Lanka.

Interpretation

Monitoring

Rainfall: During the last two weeks, there had been very heavy rainfall over the following area:
Galle

Daily Average Rainfall in the Met stations for previous week of (13th September - 20th September) = 21.1 mm

Maximum Daily Rainfall: 95.0 mm & Minimum Daily Rainfall: 0.0 mm.

Region	Average rainfall for last 8 days (mm)	Average temperature for last 8 days (°C)	
		Maximum	Minimum
Northern plains	2.4	32.9	25.6
Eastern hills	10.4	27.6	19.1
Eastern plains	3.6	34.0	24.9
Western hills	8.4	27.5	19.3
Western plains	17.9	30.4	24.9
Southern plains	14.2	30.2	24.3

Region	Average rainfall for last 8 days (mm)	Daily maximum rainfall for last 8 days (mm)	Daily minimum rainfall for last 8 days (mm)
Hydro catchment	6.7	53.0	0.0

Wind: West-southwesterly winds prevailed in the sea area and around the island last week.

Temperatures: The temperature anomalies were above normal for some parts of the Northern and Uva provinces of the country driven by the warm SST's.

Predictions

Rainfall: During the next week (21st September - 27th September), heavy rainfall (≥ 115 mm) is predicted for the Southern, Sabaragamuwa, and Western provinces and fairly heavy rainfall (≥ 65 mm) is predicted for the Uva, Central, and North Western provinces and less rainfall is predicted for the rest of the country.

Temperatures: The temperature will remain above normal for some parts of the Eastern, Northern, North Central, and Uva provinces and below normal for some parts of the Central province during 22nd September - 28th September.

Teleconnections: A positive Dipole Mode has set in across the Indian Ocean since 8th of June.

MJO shall near neutral the rainfall during 21st September - 5th October for Sri Lanka.

Seasonal Precipitation: The precipitation forecast for the October-November-December, 2023 season shows a 50 - 60% tendency toward above normal precipitation for the country.

Terminology for Rainfall Ranges

	Rainfall (During 24 hours of period)
Light Showers	Less than 12.5 mm
Light to Moderate	Between 12.5 mm and 25 mm
Moderate	Between 25 mm and 50 mm
Fairly Heavy	Between 50 mm and 100 mm
Heavy	Between 100 mm and 150 mm
Very Heavy	More than 150 mm

Tropical Climate Guarantee, Federation of Environment, Climate and Technology, Columbia University Water Center, ¹ International Research Institute for Climate and Society, , Earth Institute at Columbia University, New York.



FECT Web

www.fect.lk
<http://www.climate.lk>
<http://www.tropicalclimate.org/>



FECT Blog

Past reports available at
<http://fect.lk/blog/>
<http://fectsl.blogspot.com/>



Facebook

www.facebook.com/fectlk



Twitter

www.twitter.com/fectlk

Weekly Climate Bulletin for Sri Lanka

Inside This Issue

1. Monitoring

- a. Daily Rainfall Monitoring
- b. Weekly Rainfall Monitoring
- c. Monthly Rainfall Monitoring
- d. Dekadal (10 Day) Satellite Derived Rainfall Estimates
- e. Weekly Temperature Monitoring
- f. Weekly Wind Monitoring
- g. Weekly Average SST Anomalies

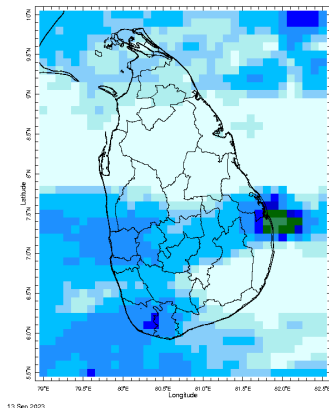
2. Predictions

- a. NCEP GFS Ensemble 1-14 day Rainfall Predictions
- b. GFS (T574) Model Rainfall Forecast from RMSC New Delhi
- c. MJO Related OLR Forecast
- d. Weekly Temperature Forecast
- e. Weekly Wind Forecast
- f. Seasonal Predictions from IRI

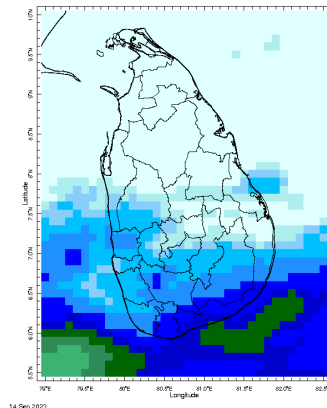
MONITORING

Daily Rainfall Monitoring

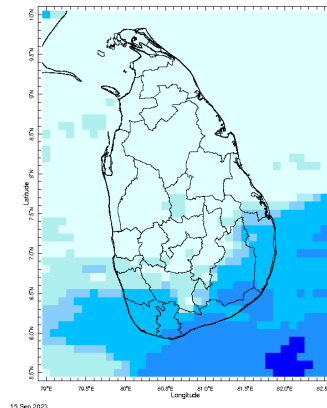
The following figures show the satellite observed rainfall in the last 7 days in Sri Lanka.



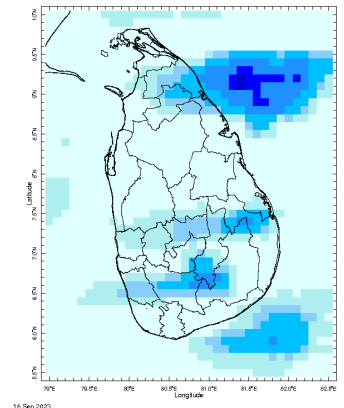
13 Sept 2023



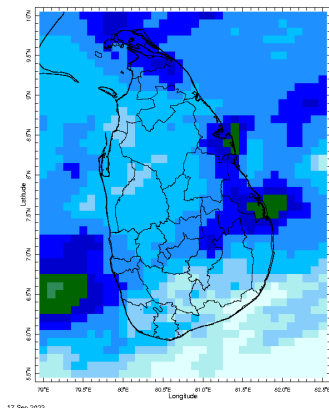
14 Sept 2023



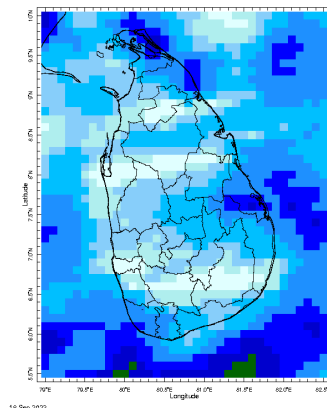
15 Sept 2023



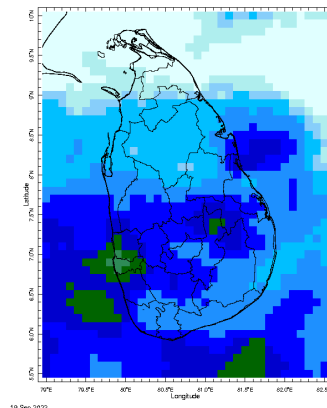
16 Sept 2023



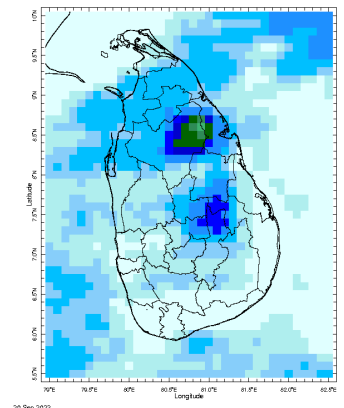
17 Sept 2023



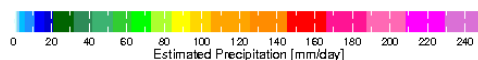
18 Sept 2023



19 Sept 2023

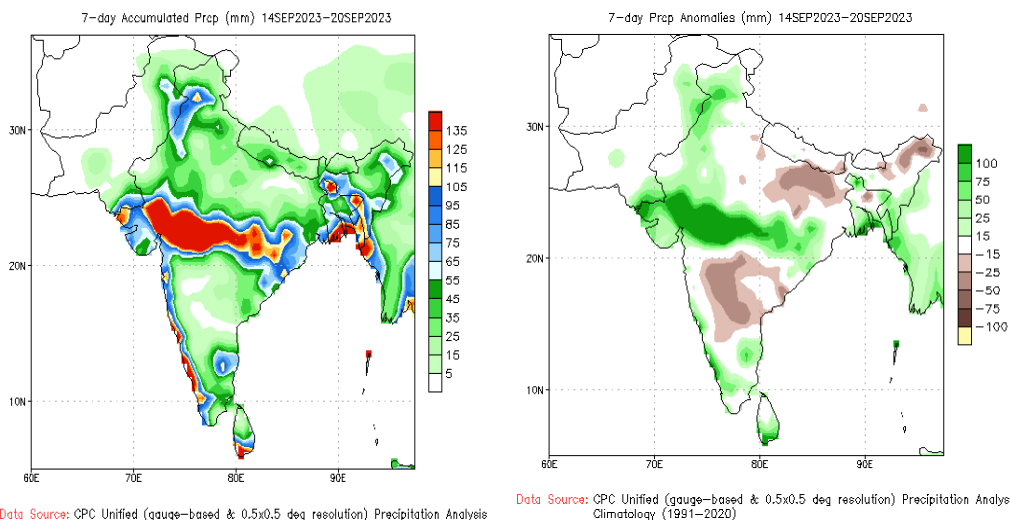


20 Sept 2023



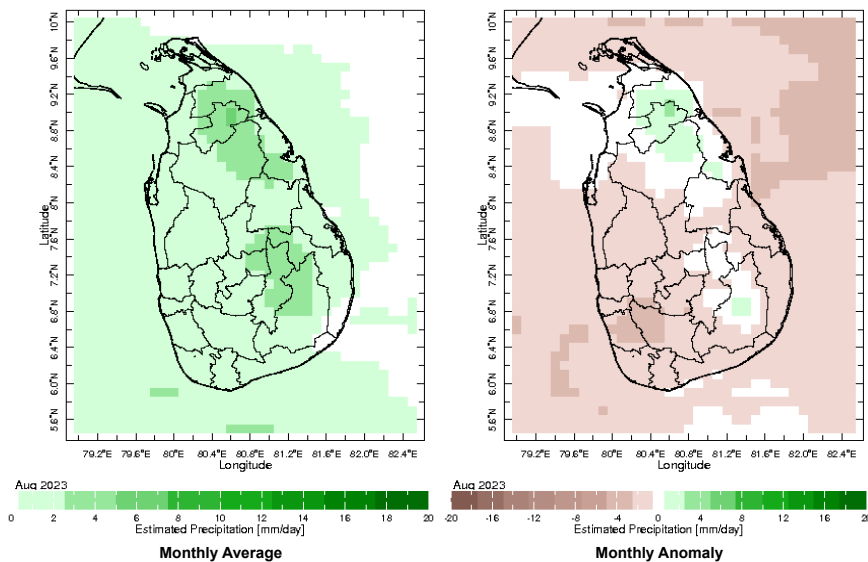
Weekly Rainfall Monitoring

The following figures show the total satellite observed rainfall in the last week in Sri Lanka. The figure in the left is the total 7-day rainfall from NOAA Climate Prediction Center (CPC) Unified Precipitation Analysis and the figure in the right is the total 7-day rainfall from CPC RFE 2.0 Satellite Rainfall Estimates. The bottom two figures are the respective anomalies.

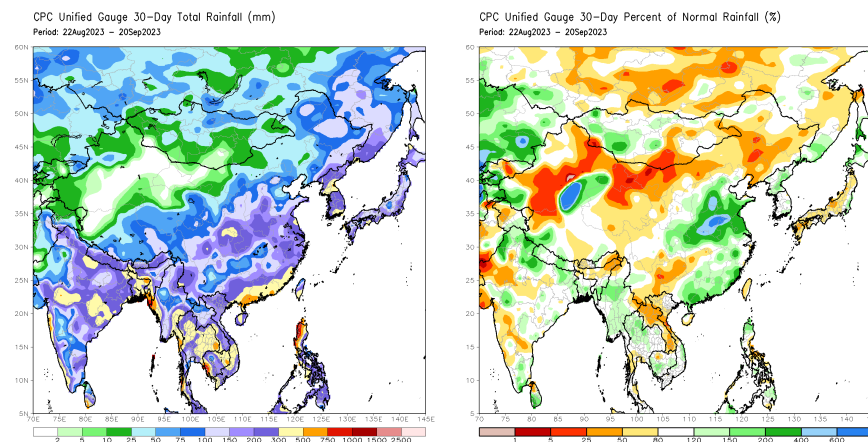


Monthly Rainfall Monitoring

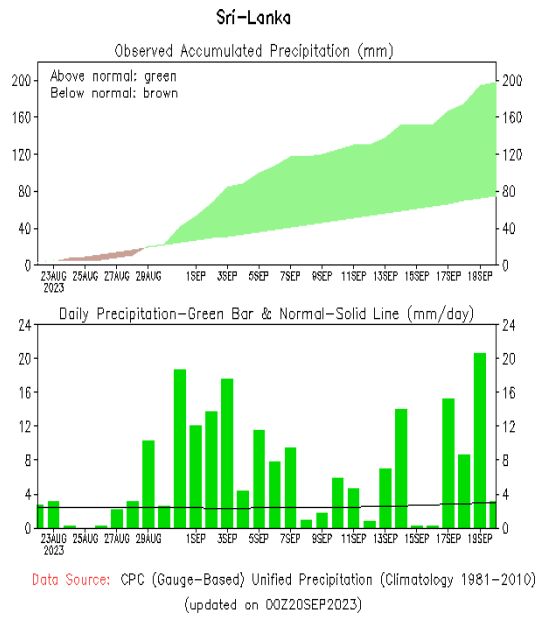
The figure in the left shows the average observed rainfall in the previous month. The rainfall anomaly in the previous month is shown in the figure to the right. The brown color in the anomaly figure shows places which received less rainfall than the historical average while the green color shows places with above average rainfall. Darker shades show higher magnitudes in rainfall



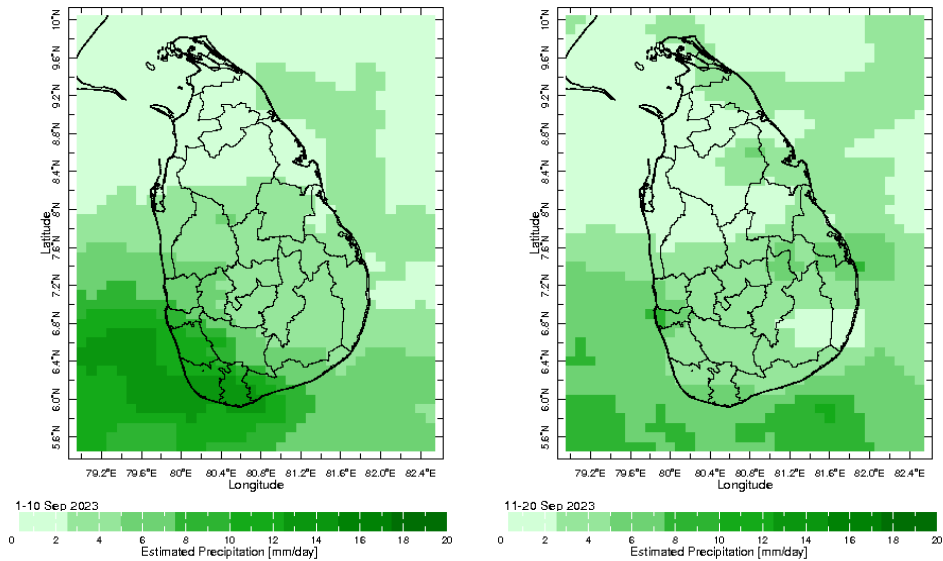
The figure in the top-left shows the total rainfall in the past 30 days from CPC Unified Precipitation Analysis while the figure in the top-right shows the total rainfall for the same period from RFE 2.0 Satellite Rainfall Estimates. The bottom two figures show the percentage of rainfall received in the past 30 days compared to normal rainfall in this period.



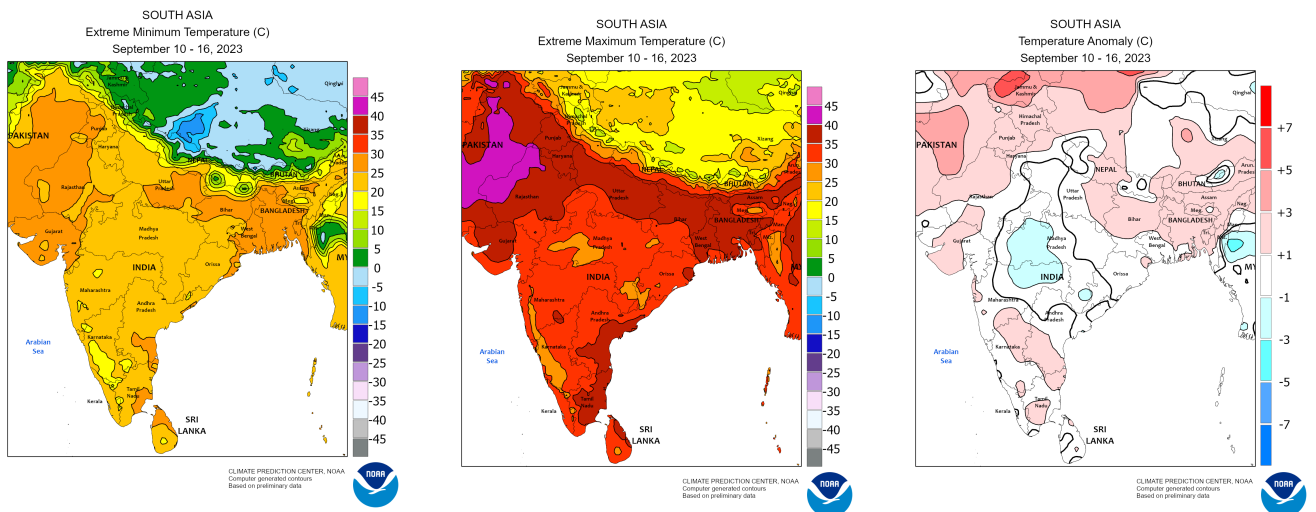
The following figure shows the observed accumulated rainfall (top) and daily observed rainfall (bottom) in Sri Lanka in the last 30 days.



Dekadal (10 Day) Satellite Derived Rainfall Estimates

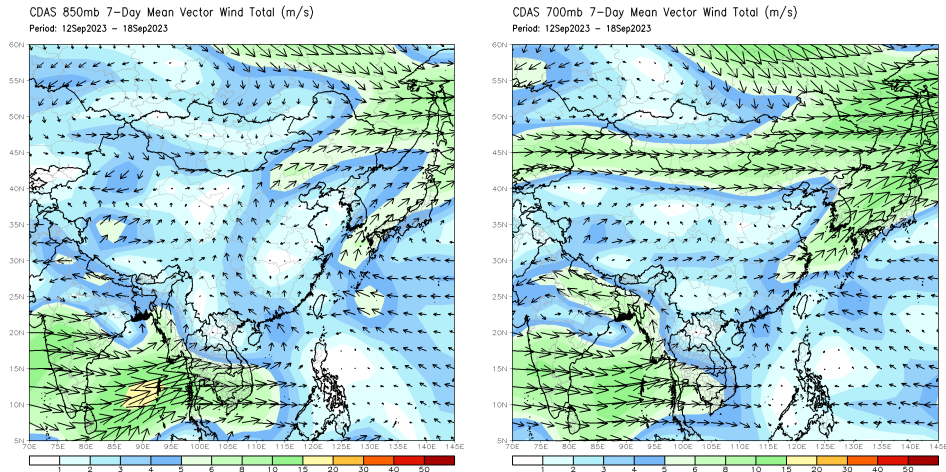


Weekly Temperature Monitoring



Weekly Wind Monitoring

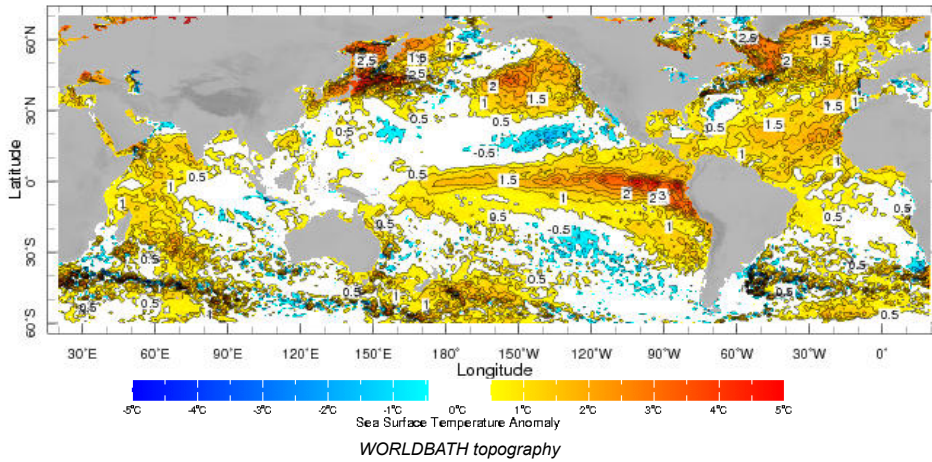
The following figures show the mean vector wind total of the past 7 days near Sri Lanka at two levels. The figure on the left shows 850 mb (~1500 m) level and the figure on the right shows 700 mb (~3000 m) level.



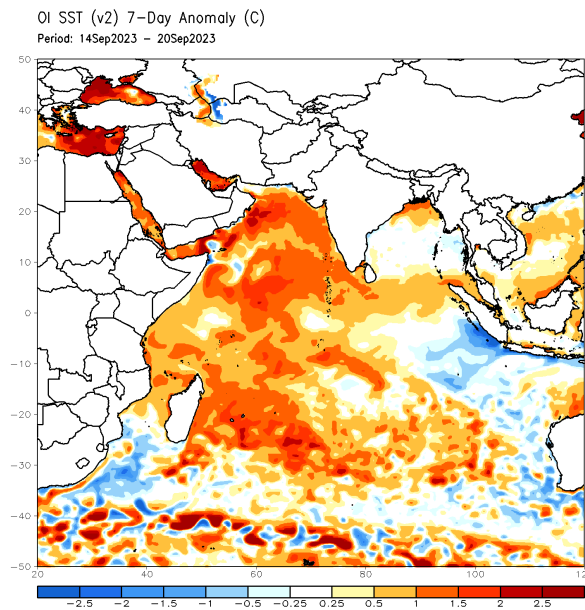
Weekly Average SST Anomalies

Weekly average Sea Surface Temperature (SST) anomaly in the world from NOAA NCEP

zlev 0.0 meters Time 29 Aug 2023 - 4 Sep 2023

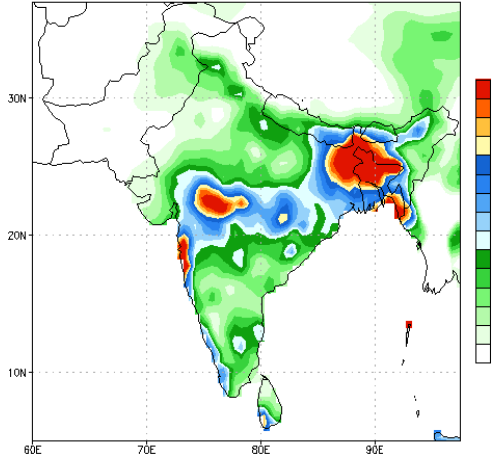


Optimum Interpolated Sea Surface Temperature Anomaly in the Indian Ocean from NOAA CPC



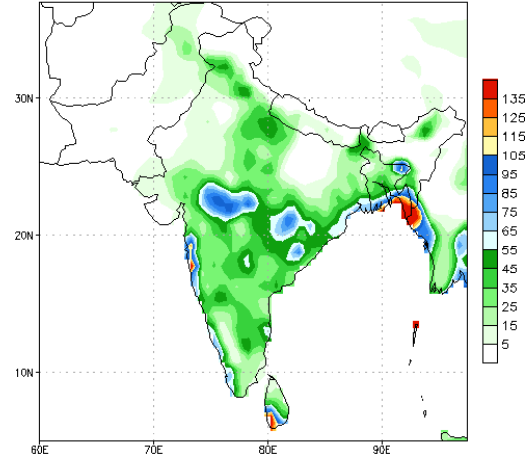
NCEP GFS 1- 14 Day prediction

NCEP GFS Ensemble Forecast 1-7 Day Precipitation (mm)
from: 21Sep2023
21Sep2023-27Sep2023 Accumulation



Bias correction based on last 30-day forecast error

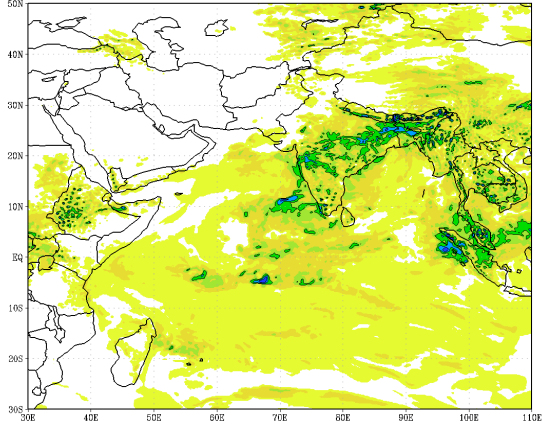
NCEP GFS Ensemble Forecast 8-14 Day Precipitation (mm)
from: 21Sep2023
28Sep2023-04Oct2023 Accumulation



Bias correction based on last 30-day forecast error

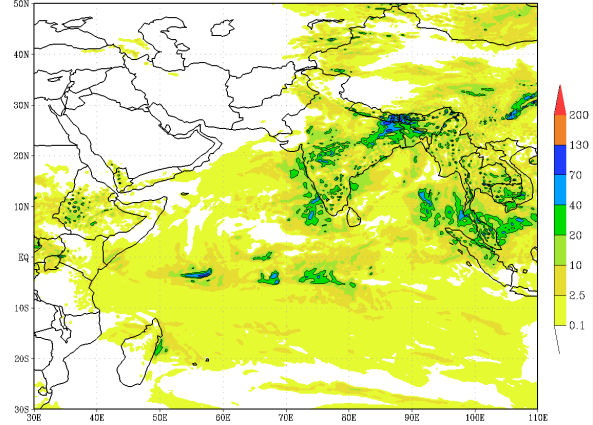
IMD GFS (T574) Model Rainfall Forecast from RMSC New Delhi, India

IMD :GFS MODEL(12 Km) RAINFALL (mm) FORECAST (24 HR)
based on 00 UTC of 21-09-2023 valid for 03 UTC of 22-09-2023



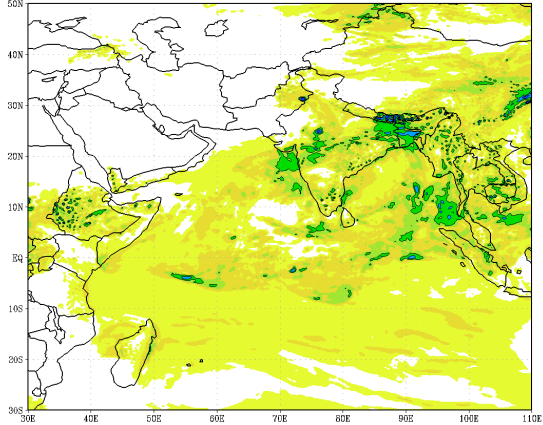
(Background does not depict political boundary)

IMD :GFS MODEL(12 Km) RAINFALL (mm) FORECAST (48 HR)
based on 00 UTC of 21-09-2023 valid for 03 UTC of 23-09-2023



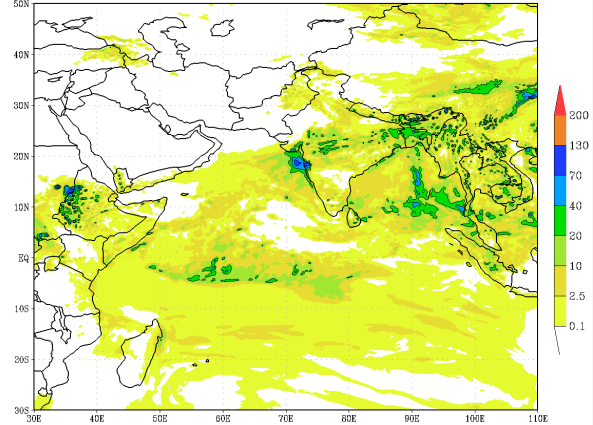
(Background does not depict political boundary)

IMD :GFS MODEL(12 Km) RAINFALL (mm) FORECAST (72 HR)
based on 00 UTC of 21-09-2023 valid for 03 UTC of 24-09-2023

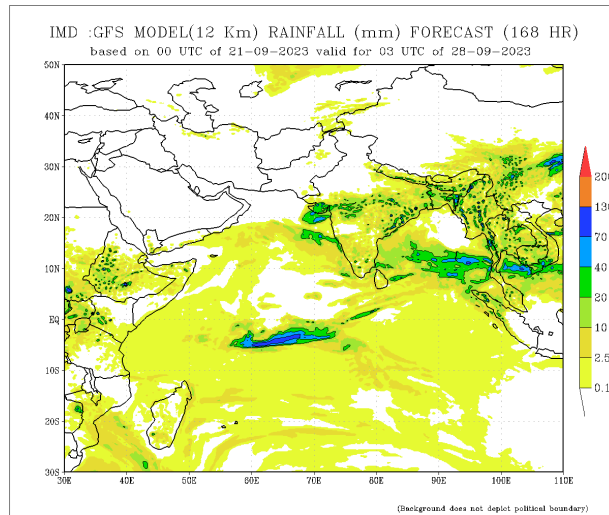
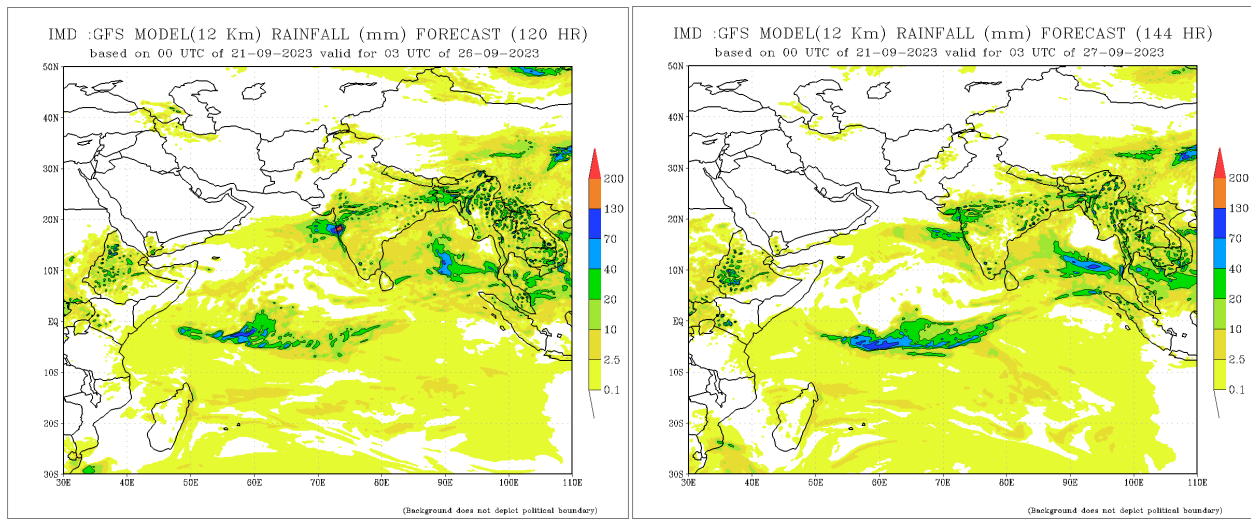


(Background does not depict political boundary)

IMD :GFS MODEL(12 Km) RAINFALL (mm) FORECAST (96 HR)
based on 00 UTC of 21-09-2023 valid for 03 UTC of 25-09-2023

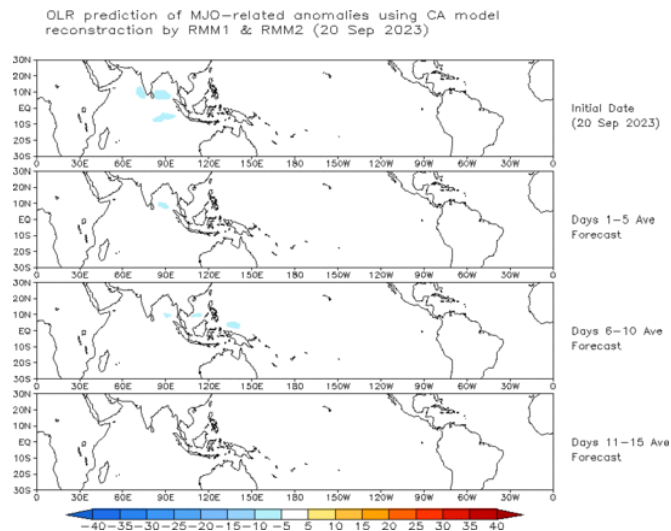


(Background does not depict political boundary)



Madden Julian Oscillation (MJO) related Outgoing Longwave Radiation (OLR) Forecast

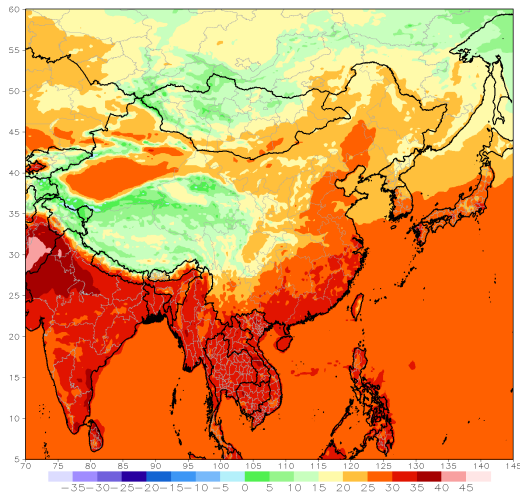
The Outgoing Longwave Radiation (OLR) is a proxy for rainfall. This can be used to identify convective rain clouds based on the MJO phase. Violet and Blue shading indicates enhanced tropical weather and Orange shading indicates suppressed conditions. The following figure shows the forecasts of MJO associated anomalous OLR for the next 15 days from the Constructed Analogue (CA) model forecasts.



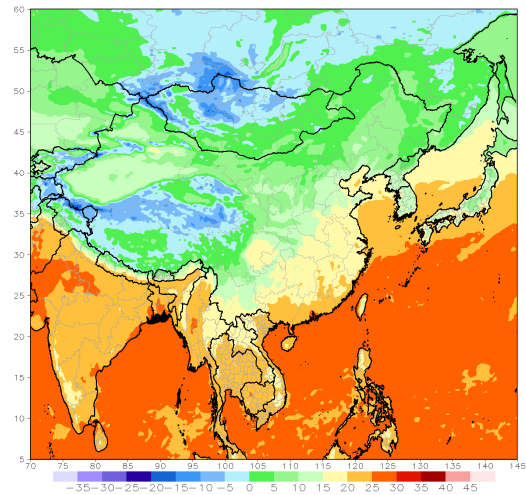
Weekly Temperature Forecast

Weekly Minimum and Maximum Temperature prediction from the GFS model (from NOAA CPC)

GFS week1 Temperature Max (C)
Period: 18z22Sep2023 - 18z28Sep2023



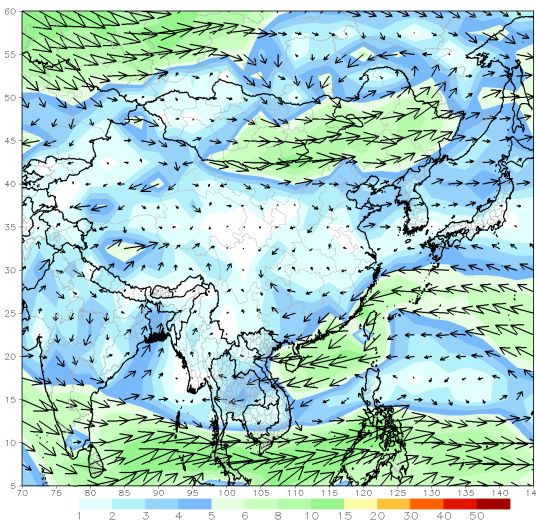
GFS week1 Temperature Min (C)
Period: 18z22Sep2023 - 18z28Sep2023



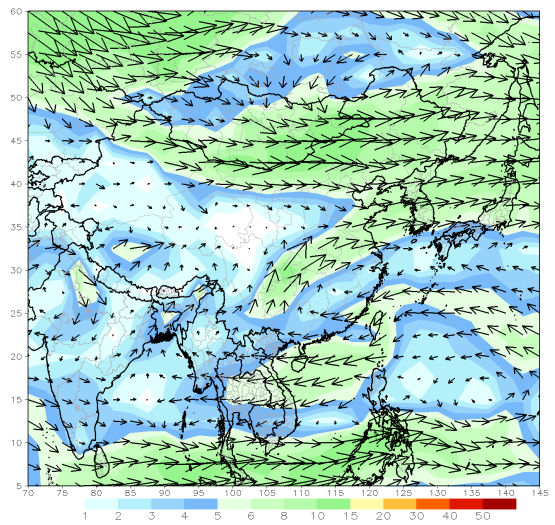
Weekly Wind Forecast

Weekly mean vector wind total prediction from the GFS model at 850 mb (left) and 700 mb (right) levels. (from NOAA CPC)

GFS 850mb week1 Mean Vector Wind Total (m/s)
Period: 18z22Sep2023 - 18z28Sep2023



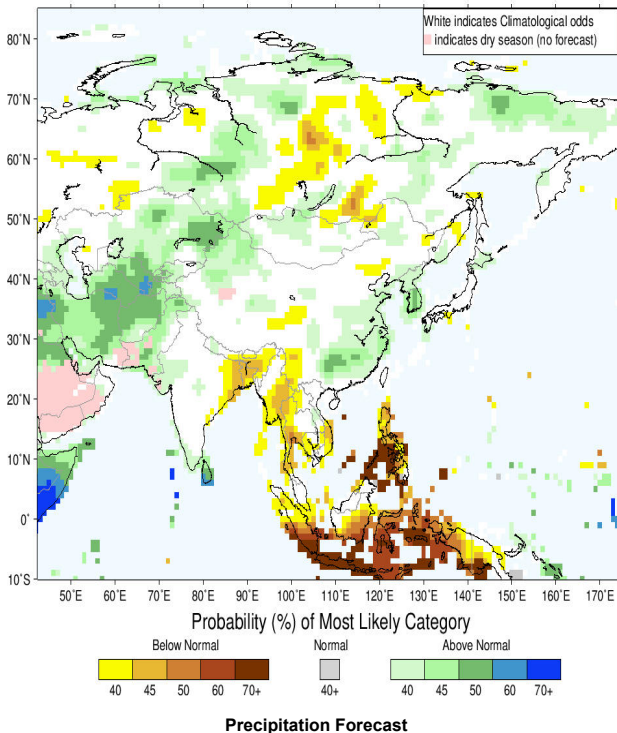
GFS 700mb week1 Mean Vector Wind Total (m/s)
Period: 18z22Sep2023 - 18z28Sep2023



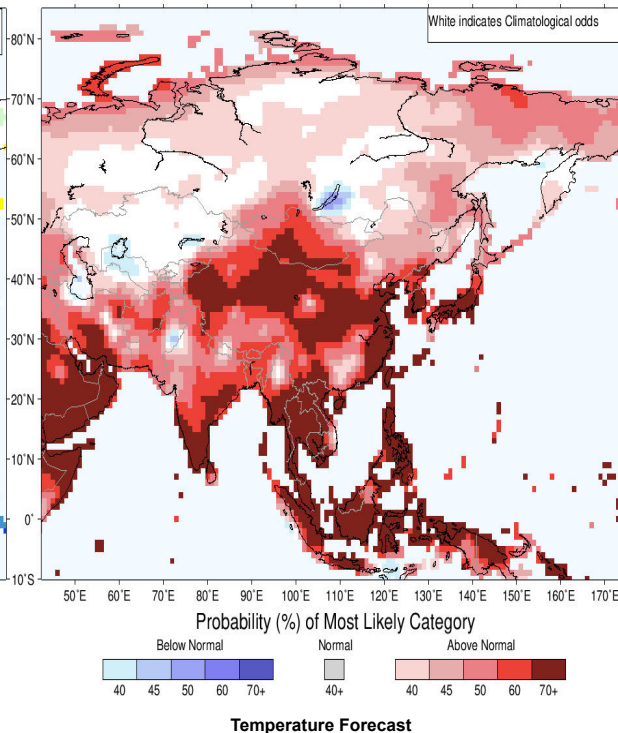
Seasonal Rainfall and Temperature Forecast

Following is the latest seasonal precipitation and temperature prediction for the next 3 months by the IRI. The color shading indicates the probability of the most dominant tercile -- that is, the tercile having the highest forecast probability. The color bar alongside the map defines these dominant tercile probability levels. The upper side of the color bar shows the colors used for increasingly strong probabilities when the dominant tercile is the above-normal tercile, while the lower side shows likewise for the below-normal tercile. The gray color indicates an enhanced probability for the near-normal tercile (nearly always limited to 40%).

IRI Multi-Model Probability Forecast for Precipitation for October–November–December 2023, Issued September 2023



IRI Multi-Model Probability Forecast for Temperature for October–November–December 2023, Issued September 2023



About us

FECT is a federation of 7 organizations registered in four countries which works in countries across the Indian Ocean Islands and its littoral. Over the last 20 years, we have had operations in Africa, South Asia, South-East Asia but now it is mostly in the Indian Ocean Islands.

Contact us

Digana Village, Rajawella, KY20180, Sri Lanka.
76/2 Matala Road, Akurana, KY 20850, Sri Lanka.
+94 81 230 0415
+94 81 237 6746
info@fect.lk

Follow us

[f](#)
[t](#)
[in](#)

Subscribe to our monthly newsletter