

HIGHLIGHTS

Rainfall Prediction



- High probability of heavy rainfall (100 - 130 mm) is predicted for Sabaragamuwa, Uva, Northern provinces and fairly heavy rainfall is predicted for rest of the country during 10 - 16 November.

Monitored Rainfalls



- During the last week, average daily rainfall over Sri Lanka was 17.7 mm and hydro catchment was 22.4 mm.
- Extreme rainfall (≥ 150 mm/day) was in Ratnapura, Kurunegala and Anuradhapura.
- The rainfall of last week was twice as normal.

Monitored & Predicted Wind



- From 30 Oct - 5 Nov, up to 3 m/s of east-south easterly winds were at 850 mb (1.5 km).
- During 9 - 15 Nov, up to 5 m/s of north easterly winds are expected at 850 mb (1.5 km).

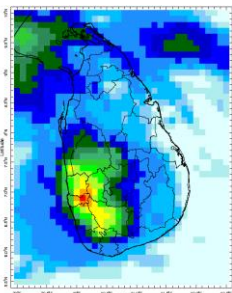
Monitored Sea & Land Temp



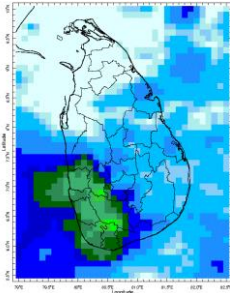
- Sea surface temperature around Sri Lanka was 1.0 - 2.0°C above normal.
- From 1 - 8 Nov, maximum daily temperature was recorded in Ratnapura (33.9°C) and Maha Illuppallama (33.1°C).

Monitoring Rainfall

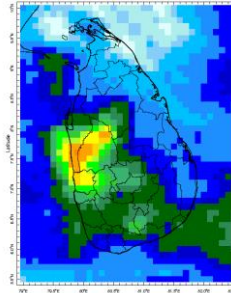
Daily Estimates for Rainfall from 30th October - 6th November 2023



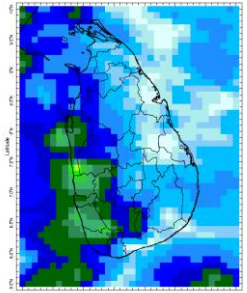
30 October



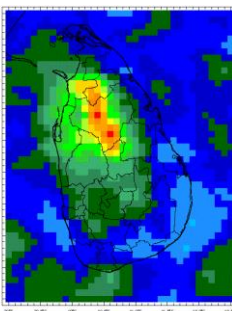
31 October



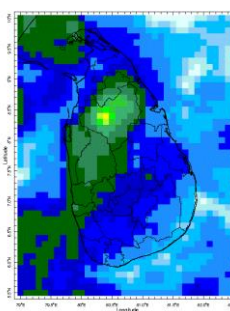
1 November



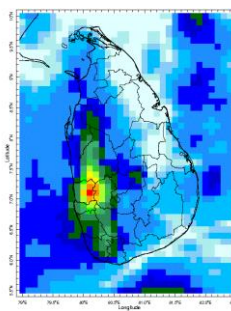
2 November



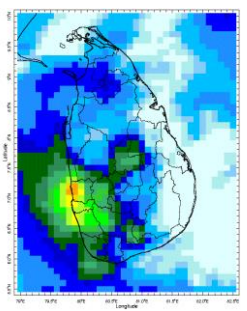
3 November



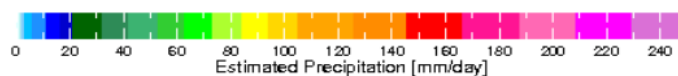
4 November



5 November



6 November



Federation for
Environment, Climate
& Technology

Federation for Environment, Climate and Technology

c/o, Maintenance Office, Mahaweli Authority, Digana Village, Rajawella, Sri Lanka.

Phone (+94) 81-2376746, (+94) 81-2300415

Web Site: www.fect.lk

E mail: info@fect.lk

LI: www.linkedin.com/in/fectlk

FB: www.facebook.com/fectlk

TW: www.twitter.com/fectlk

Ocean State *(Text Courtesy IRI)*

Pacific sea state: November 6, 2023

El Niño Mode has set in according to NOAA since 8th of June. Equatorial sea surface temperatures (SSTs) are above average across the central and eastern Pacific Ocean early-November. El Niño is anticipated to continue through the Northern Hemisphere spring (with an 80% chance during March-May 2024).

Indian Ocean State

Sea surface temperature around Sri Lanka was 0.5 °C above normal to the Western and Southern half of the country in 17th - 23rd October, 2023. A positive Dipole Mode has set in across the Indian Ocean since 8th of June.

Predictions

Rainfall

1 - 7 Day prediction: IMD GFS models

From 10th November - 16th November:

Total rainfall by Provinces:

Rainfall (mm)	Provinces
70 - 130	Sabaragamuwa, Uva, Northern
≤ 40	Western, Eastern, Central, Southern, North Central, North Western

MJO based OLR predictions

For the next 15 days:

MJO shall slightly suppress the rainfall during 8th - 17th November and near neutral the rainfall during 18th - 22nd November for Sri Lanka.

Interpretation

Monitoring

Rainfall: During the last two weeks, there had been very heavy rainfall over the following areas: Ratnapura, Kurunegala

Daily Average Rainfall in the Met stations for previous week of (1st November - 8th November) = 17.7 mm

Maximum Daily Rainfall: 146.9 mm & Minimum Daily Rainfall: 0.0 mm.

Region	Average rainfall for last 8 days (mm)	Average temperature for last 8 days (°C)	
		Maximum	Minimum
Northern plains	26.4	31.4	24.1
Eastern hills	11.9	25.9	18.4
Eastern plains	8.7	31.3	24.2
Western hills	19.6	28.3	19.2

Western plains	18.4	31.6	24.0
Southern plains	9.8	31.1	24.2

Region	Average rainfall for last 8 days (mm)	Daily maximum rainfall for last 8 days (mm)	Daily minimum rainfall for last 8 days (mm)
Hydro catchment	22.4	95.5	0.0

Wind: East-south easterly winds prevailed in the sea area and around the island last week.

Temperatures: The temperature anomalies were above normal for some parts of the Sabaragamuwa and Central provinces of the country driven by the warm SST's.

Predictions

Rainfall: During the next week (10th November - 16th November), heavy rainfall is predicted for the Sabaragamuwa, Uva, and Northern provinces and fairly heavy rainfall is predicted for the rest of the country.

Temperatures: The temperature will remain seasonably near normal for the country during 9th November - 15th November.

Teleconnections: A positive Dipole Mode has set in across the Indian Ocean since 8th of June. MJO shall slightly suppress the rainfall during 8th - 17th November and near neutral the rainfall during 18th - 22nd November for Sri Lanka.

Seasonal Precipitation: The precipitation forecast for the November-December-January, 2024 season shows a 40 - 45% tendency toward above normal precipitation.

Terminology for Rainfall Ranges

	Rainfall (During 24 hours of period)
Light Showers	Less than 12.5 mm
Light to Moderate	Between 12.5 mm and 25 mm
Moderate	Between 25 mm and 50 mm
Fairly Heavy	Between 50 mm and 100 mm
Heavy	Between 100 mm and 150 mm
Very Heavy	More than 150 mm

Tropical Climate Guarantee, Federation of Environment, Climate and Technology, Columbia University Water Center, ¹ International Research Institute for Climate and Society, , Earth Institute at Columbia University, New York.



FECT Web

www.fect.lk
<http://www.climate.lk>
<http://www.tropicalclimate.org/>



FECT Blog

Past reports available at
<http://fect.lk/blog/>
<http://fectsl.blogspot.com/>



Facebook

www.facebook.com/fectlk



Twitter

www.twitter.com/fectlk

Weekly Climate Bulletin for Sri Lanka

Inside This Issue

1. Monitoring

- a. Daily Rainfall Monitoring
- b. Weekly Rainfall Monitoring
- c. Monthly Rainfall Monitoring
- d. Dekadal (10 Day) Satellite Derived Rainfall Estimates
- e. Weekly Temperature Monitoring
- f. Weekly Wind Monitoring
- g. Weekly Average SST Anomalies

2. Predictions

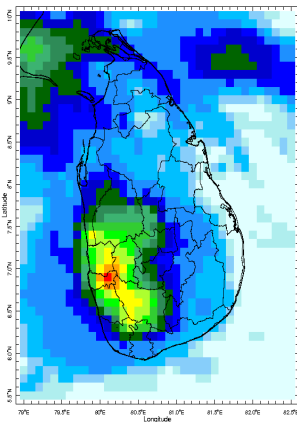
- a. NCEP GFS Ensemble 1-14 day Rainfall Predictions
- b. GFS (T574) Model Rainfall Forecast from RMSC New Delhi
- c. MJO Related OLR Forecast
- d. Weekly Temperature Forecast
- e. Weekly Wind Forecast
- f. Seasonal Predictions from IRI



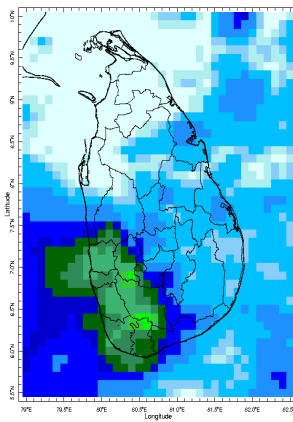
MONITORING

Daily Rainfall Monitoring

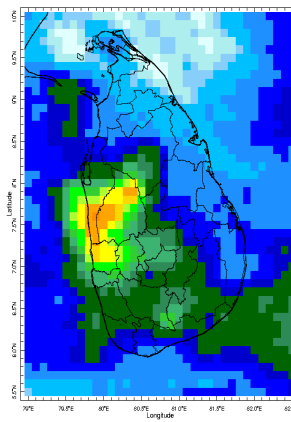
The following figures show the satellite observed rainfall in the last 7 days in Sri Lanka.



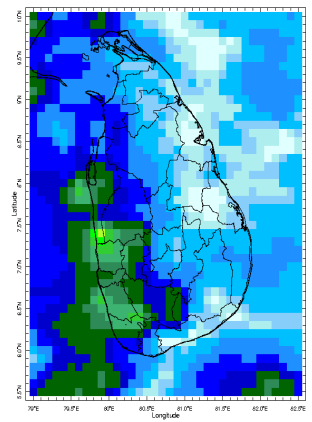
30 Oct 2023



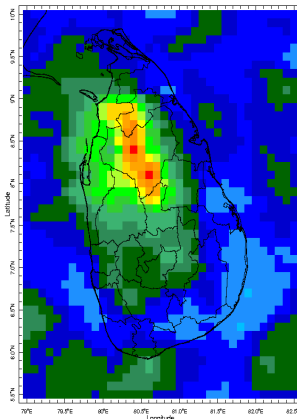
31 Oct 2023



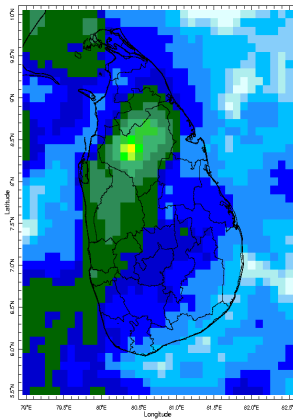
1 Nov 2023



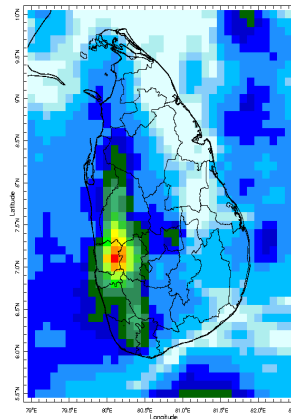
2 Nov 2023



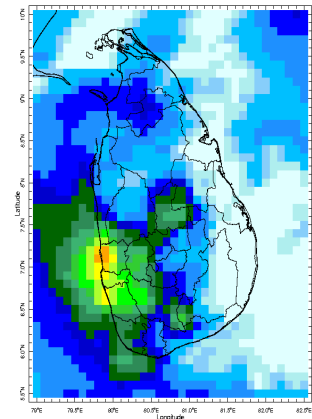
3 Nov 2023



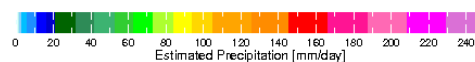
4 Nov 2023



5 Nov 2023

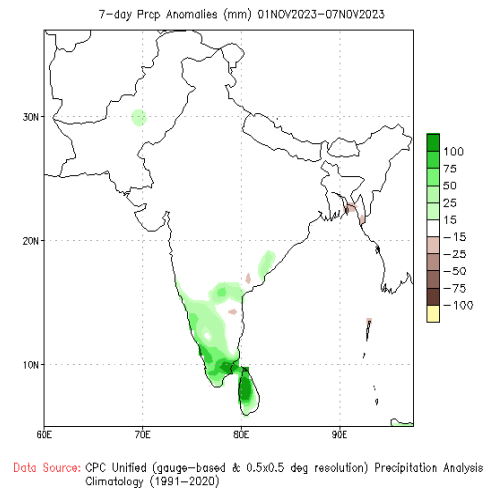
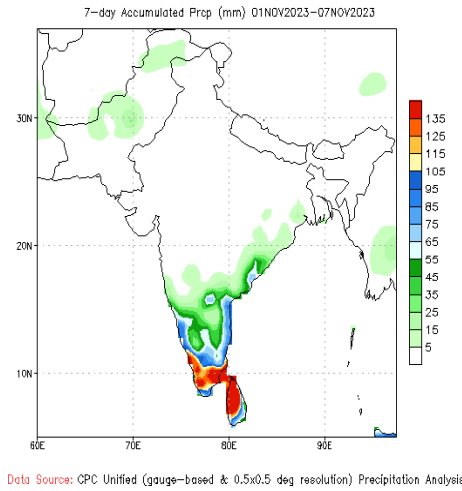


6 Nov 2023



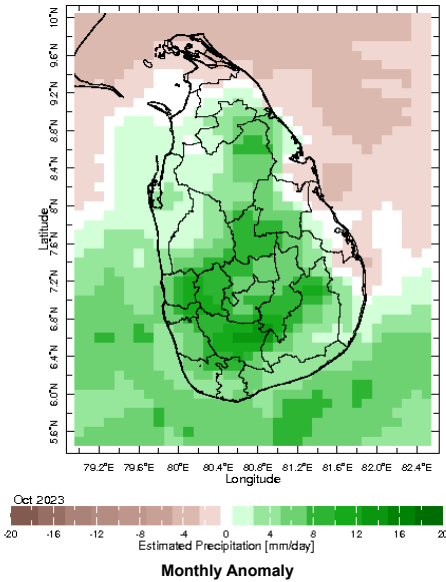
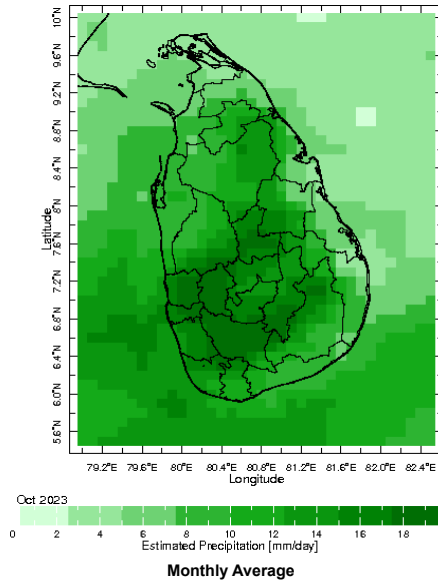
Weekly Rainfall Monitoring

The following figures show the total satellite observed rainfall in the last week in Sri Lanka. The figure in the left is the total 7-day rainfall from NOAA Climate Prediction Center (CPC) Unified Precipitation Analysis and the figure in the right is the total 7-day rainfall from CPC RFE 2.0 Satellite Rainfall Estimates. The bottom two figures are the respective anomalies.

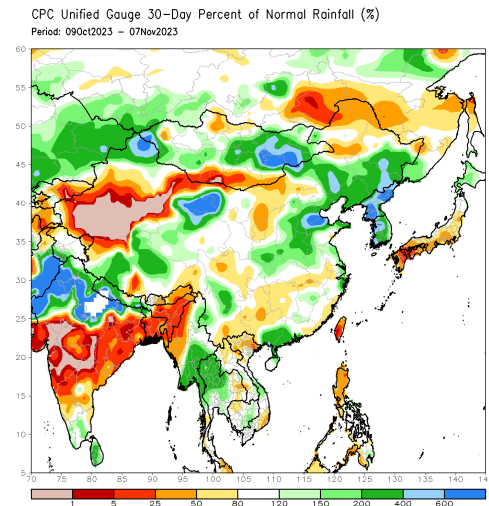
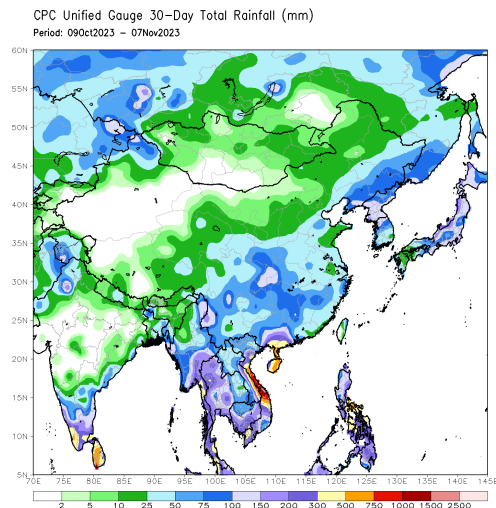


Monthly Rainfall Monitoring

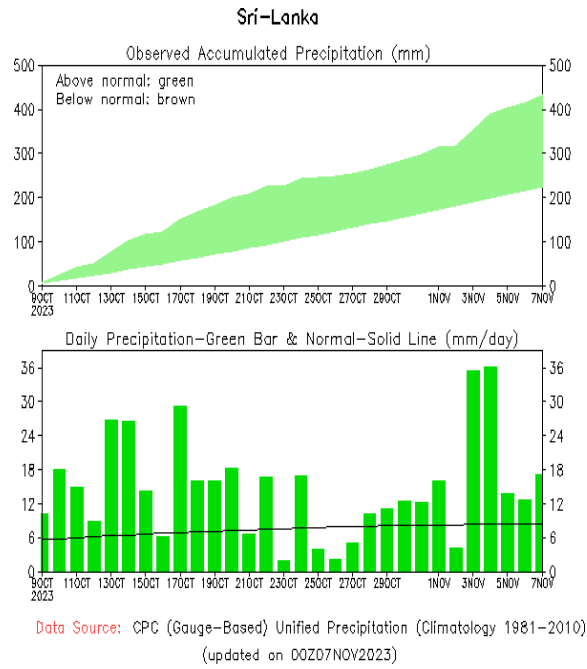
The figure in the left shows the average observed rainfall in the previous month. The rainfall anomaly in the previous month is shown in the figure to the right. The brown color in the anomaly figure shows places which received less rainfall than the historical average while the green color shows places with above average rainfall. Darker shades show higher magnitudes in rainfall



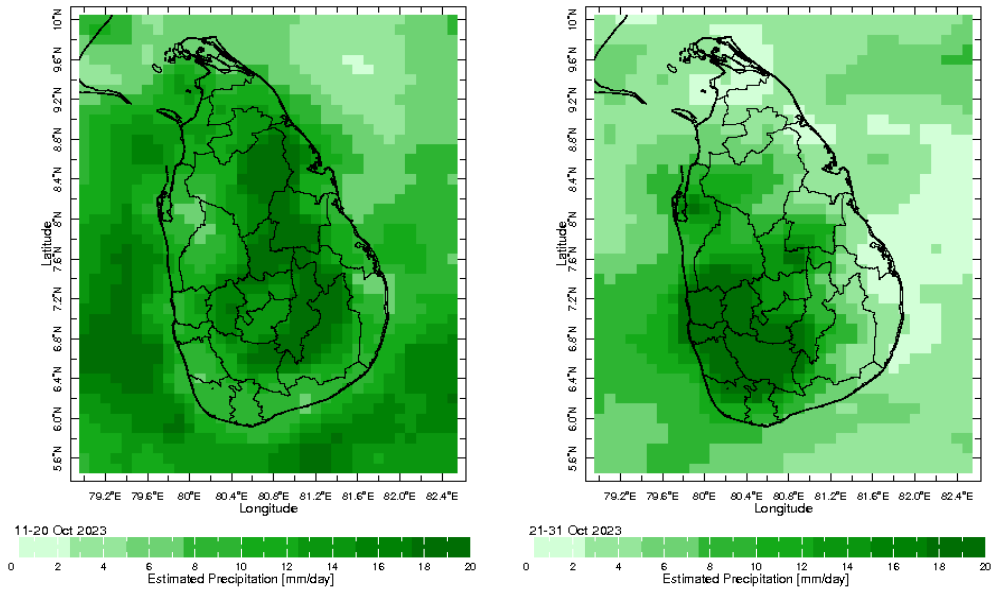
The figure in the top-left shows the total rainfall in the past 30 days from CPC Unified Precipitation Analysis while the figure in the top-right shows the total rainfall for the same period from RFE 2.0 Satellite Rainfall Estimates. The bottom two figures show the percentage of rainfall received in the past 30 days compared to normal rainfall in this period.



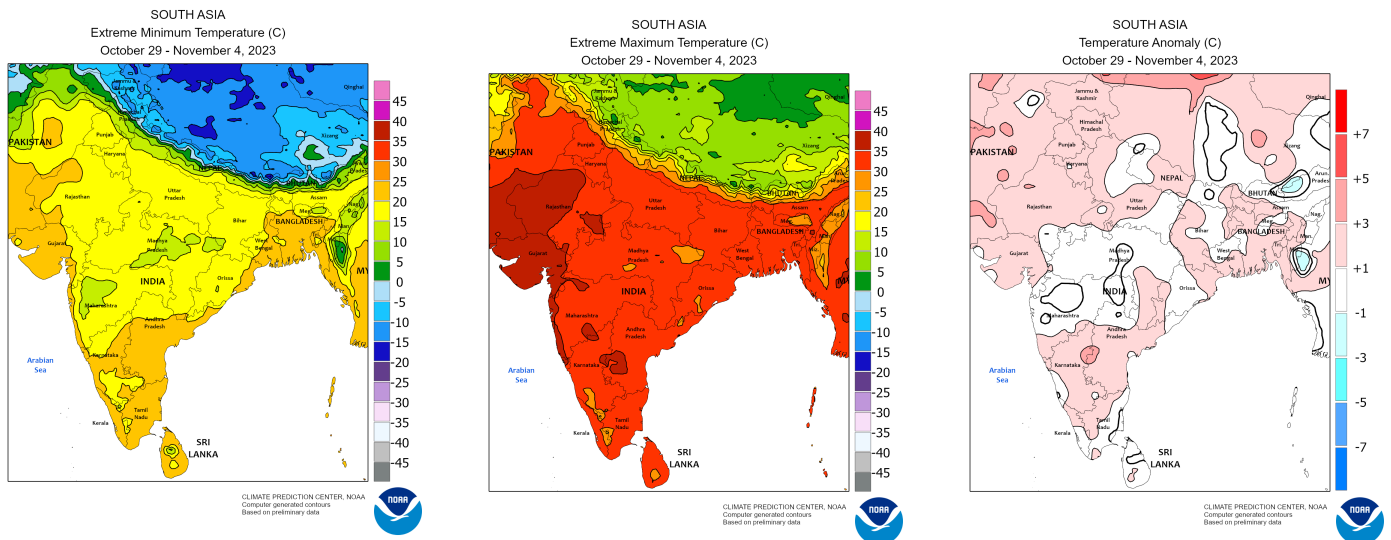
The following figure shows the observed accumulated rainfall (top) and daily observed (bottom) in Sri Lanka in the last 30 days.



Dekadal (10 Day) Satellite Derived Rainfall Estimates

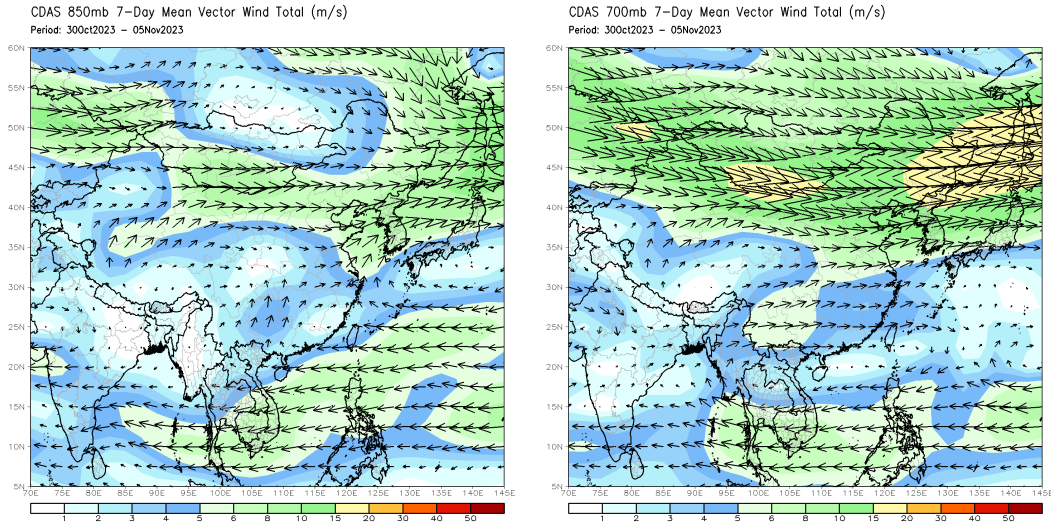


Weekly Temperature Monitoring



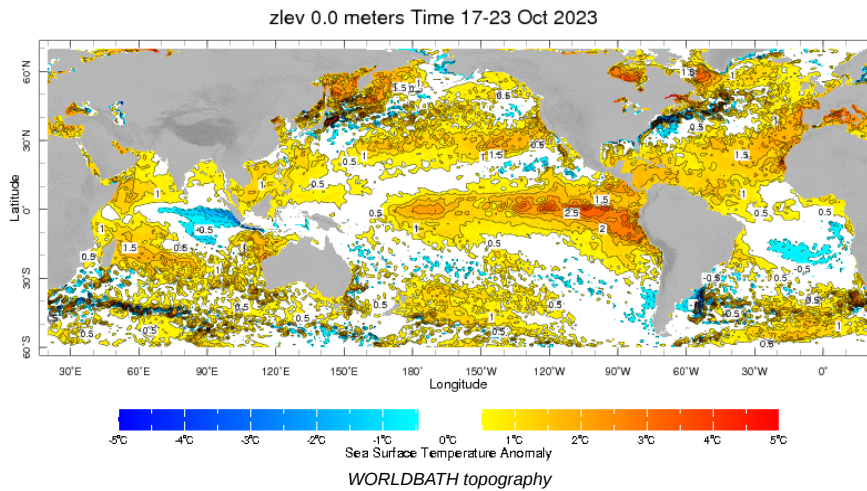
Weekly Wind Monitoring

The following figures show the mean vector wind total of the past 7 days near Sri Lanka at two levels. The figure on the left shows 850 mb (~1500 m) level and the figure on the right shows 700 mb (~3000 m) level.

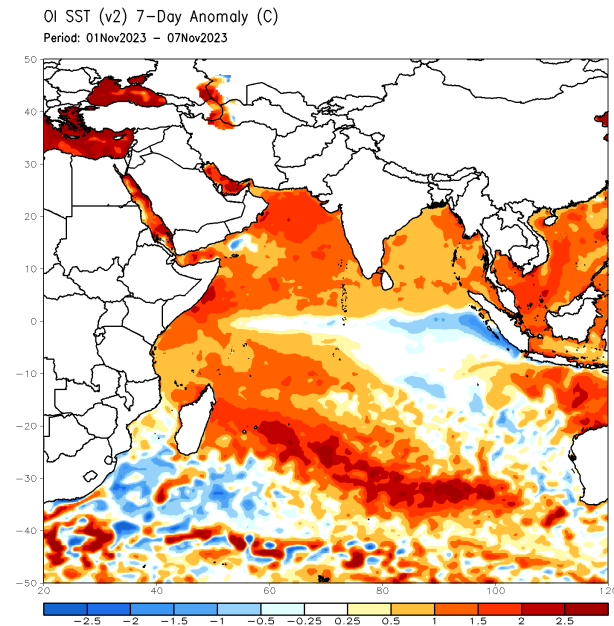


Weekly Average SST Anomalies

Weekly average Sea Surface Temperature (SST) anomaly in the world from NOAA NCEP

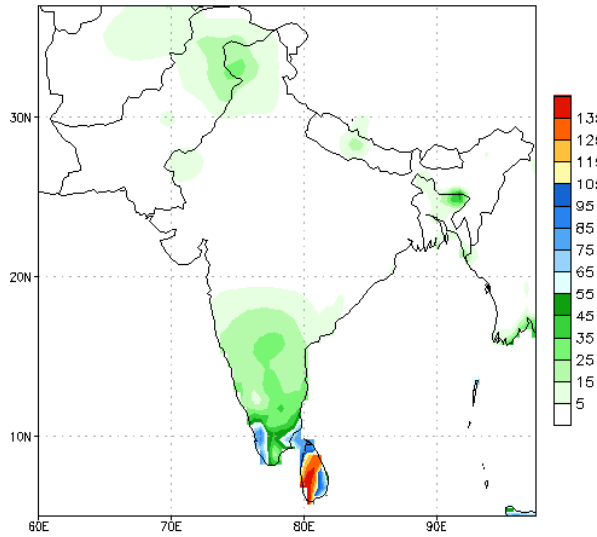


Optimum Interpolated Sea Surface Temperature Anomaly in the Indian Ocean from NOAA CPC



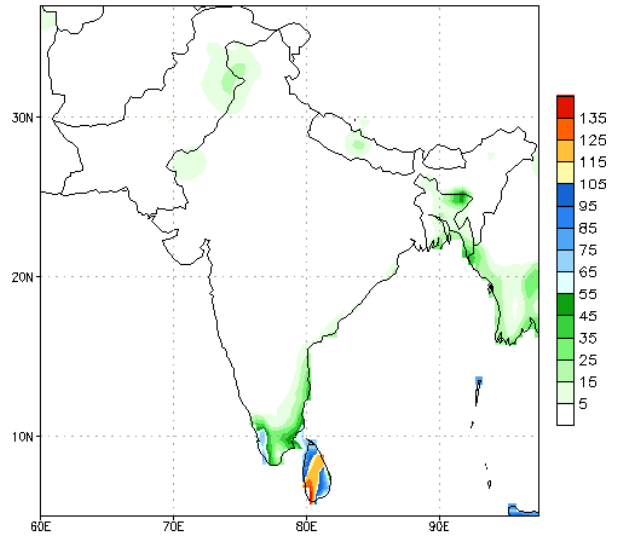
NCEP GFS 1- 14 Day prediction

NCEP GFS Ensemble Forecast 1-7 Day Precipitation (mm)
from: 08Nov2023
08Nov2023-14Nov2023 Accumulation



Bias correction based on last 30-day forecast error

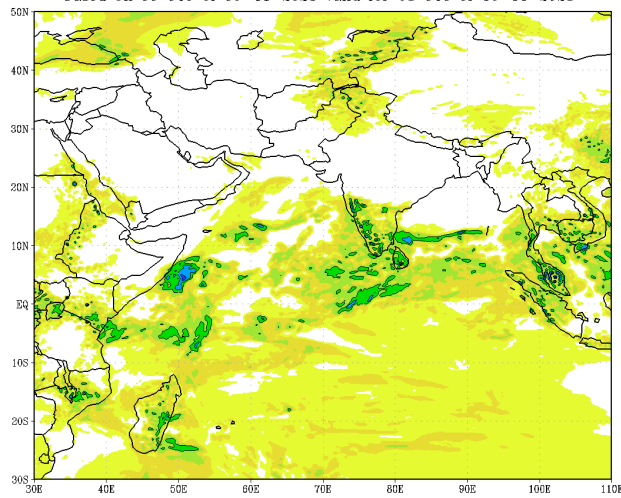
NCEP GFS Ensemble Forecast 8-14 Day Precipitation (mm)
from: 08Nov2023
15Nov2023-21Nov2023 Accumulation



Bias correction based on last 30-day forecast error

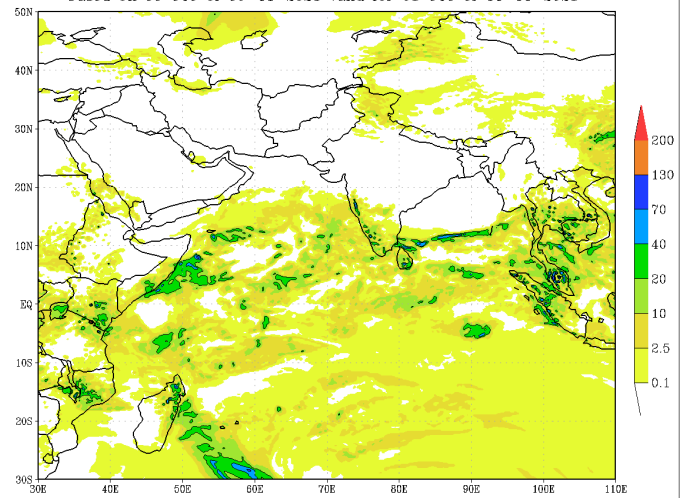
IMD GFS (T574) Model Rainfall Forecast from RMSC New Delhi, India

IMD :GFS MODEL(12 Km) RAINFALL (mm) FORECAST (24 HR)
based on 00 UTC of 09-11-2023 valid for 03 UTC of 10-11-2023



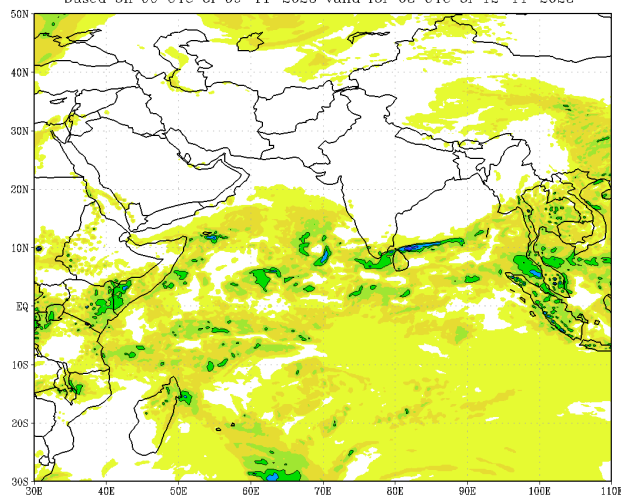
(Background does not depict political boundary)

IMD :GFS MODEL(12 Km) RAINFALL (mm) FORECAST (48 HR)
based on 00 UTC of 09-11-2023 valid for 03 UTC of 11-11-2023



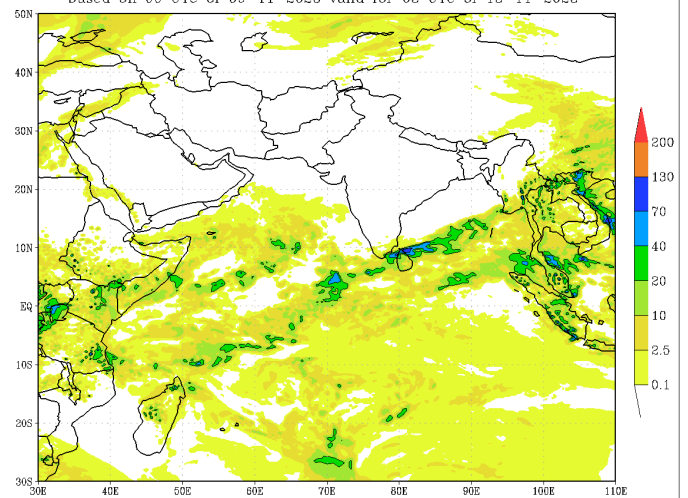
(Background does not depict political boundary)

IMD :GFS MODEL(12 Km) RAINFALL (mm) FORECAST (72 HR)
based on 00 UTC of 09-11-2023 valid for 03 UTC of 12-11-2023

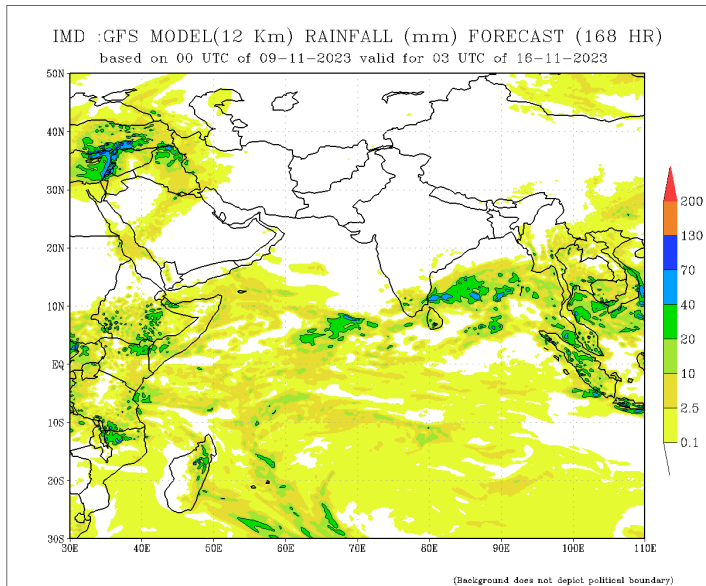
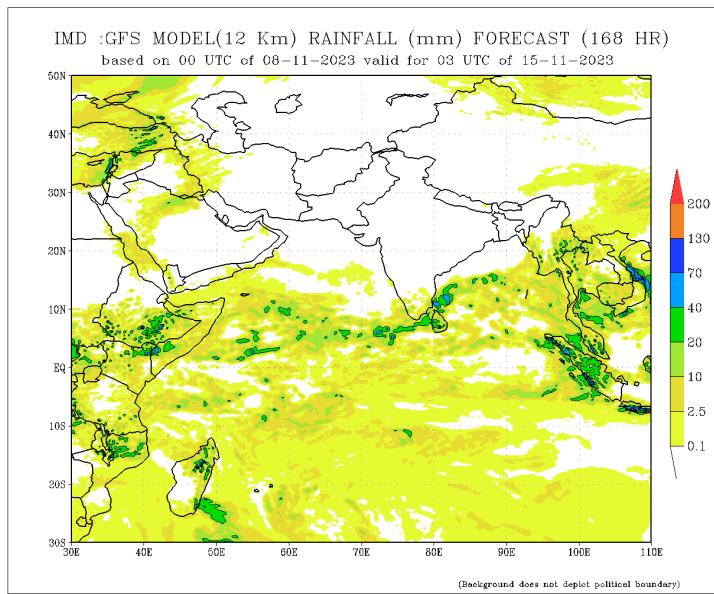
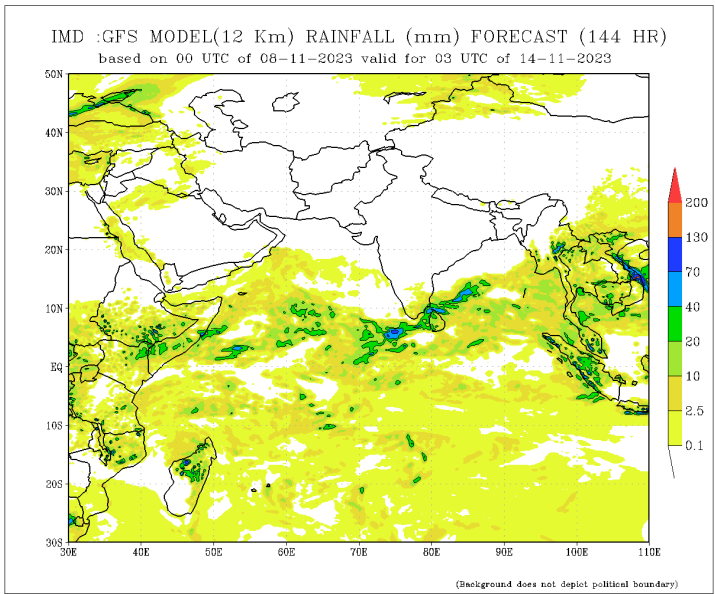


(Background does not depict political boundary)

IMD :GFS MODEL(12 Km) RAINFALL (mm) FORECAST (96 HR)
based on 00 UTC of 09-11-2023 valid for 03 UTC of 13-11-2023

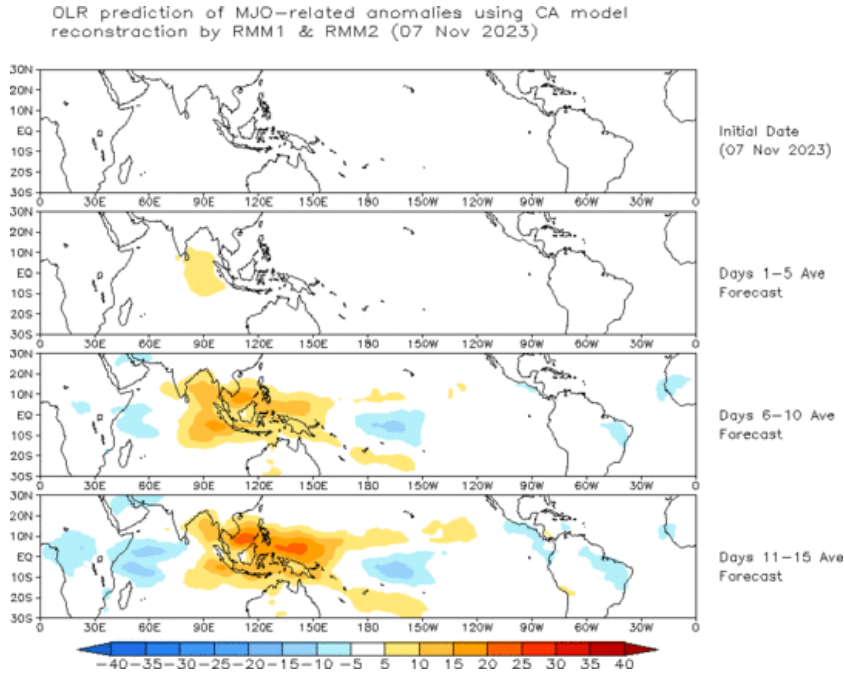


(Background does not depict political boundary)



Madden Julian Oscillation (MJO) related Outgoing Longwave Radiation (OLR) Forecast

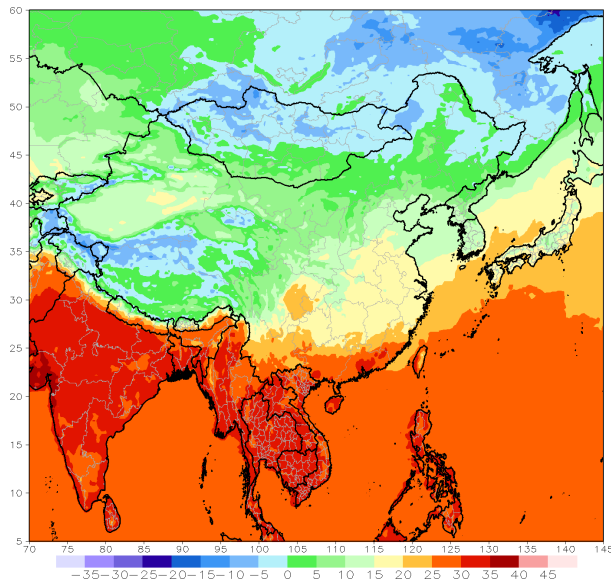
The Outgoing Longwave Radiation (OLR) is a proxy for rainfall. This can be used to identify convective rain clouds based on the MJO phase. Violet and Blue shading indicates enhanced tropical weather and Orange shading indicates suppressed conditions. The following figure shows the forecasts of MJO associated anomalous OLR for the next 15 days from the Constructed Analogue (CA) model forecasts.



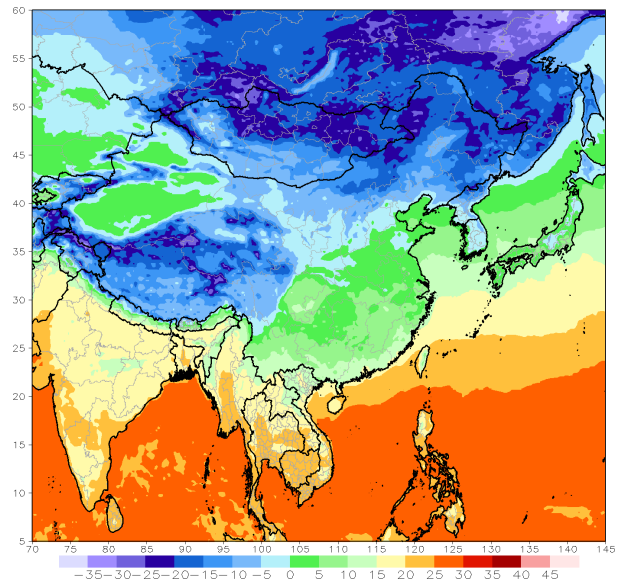
Weekly Temperature Forecast

Weekly Minimum and Maximum Temperature prediction from the GFS model (from NOAA CPC)

GFS week1 Temperature Max (C)
Period: 18z09Nov2023 - 18z15Nov2023



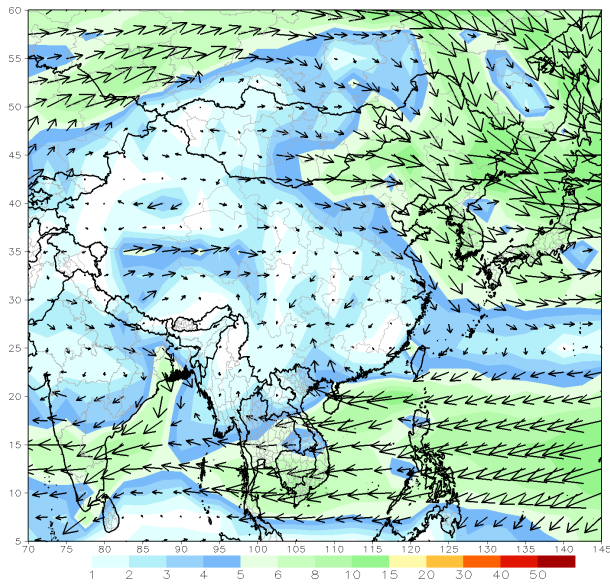
GFS week1 Temperature Min (C)
Period: 18z09Nov2023 - 18z15Nov2023



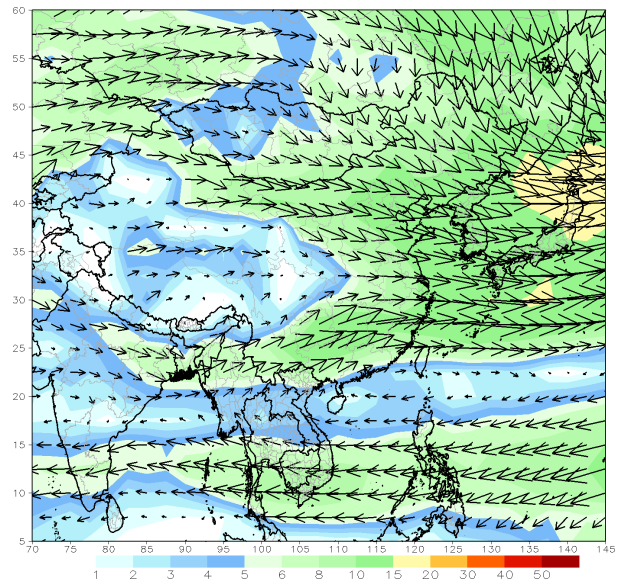
Weekly Wind Forecast

Weekly mean vector wind total prediction from the GFS model at 850 mb (left) and 700 mb (right) levels. (from NOAA CPC)

GFS 850mb week1 Mean Vector Wind Total (m/s)
Period: 18z09Nov2023 - 18z15Nov2023



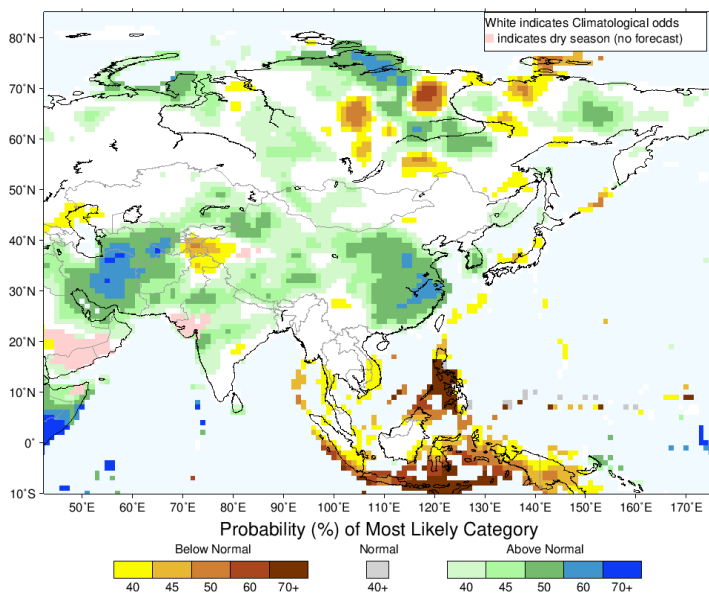
GFS 700mb week1 Mean Vector Wind Total (m/s)
Period: 18z09Nov2023 - 18z15Nov2023



Seasonal Rainfall and Temperature Forecast

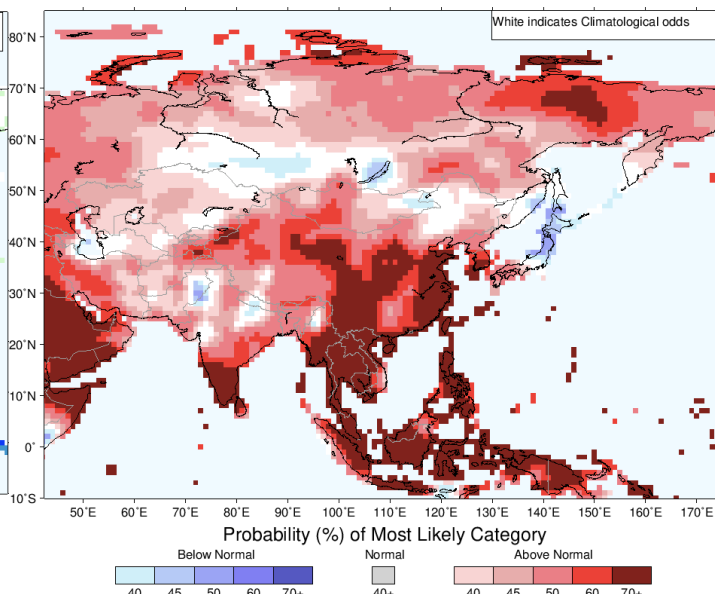
Following is the latest seasonal precipitation and temperature prediction for the next 3 months by the IRI. The color shading indicates the probability of the most dominant tercile -- that is, the tercile having the highest forecast probability. The color bar alongside the map defines these dominant tercile probability levels. The upper side of the color bar shows the colors used for increasingly strong probabilities when the dominant tercile is the above-normal tercile, while the lower side shows likewise for the below-normal tercile. The gray color indicates an enhanced probability for the near-normal tercile (nearly always limited to 40%).

IRI Multi-Model Probability Forecast for Precipitation for November-December-January 2024, Issued October 2023



Precipitation Forecast

IRI Multi-Model Probability Forecast for Temperature for November-December-January 2024, Issued October 2023



Temperature Forecast

About us

FECT is a federation of 7 organizations registered in four countries which works in countries across the Indian Ocean Islands and its littoral. Over the last 20 years, we have had operations in Africa, South Asia, South-East Asia but now it is mostly in the Indian Ocean Islands.

Contact us

Digana Village, Rajawella, KY20180, Sri Lanka.
76/2 Matale Road, Akurana, KY 20850, Sri Lanka.

+94 81 230 0415
+94 81 237 6746

info@fect.lk

Follow us



Subscribe to our monthly newsletter