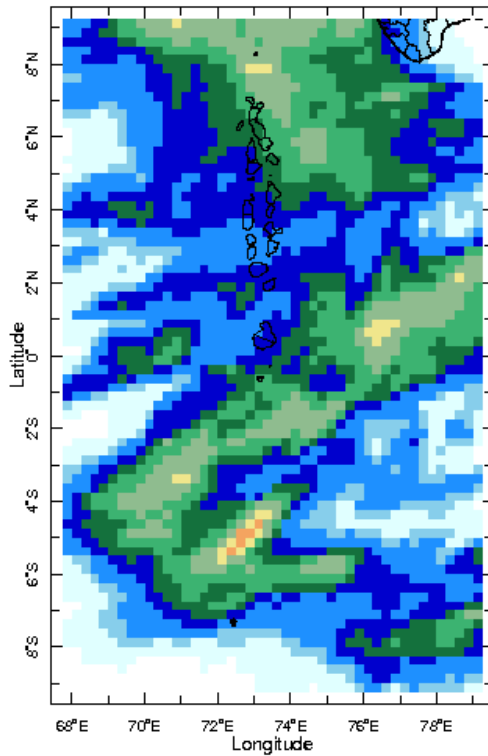
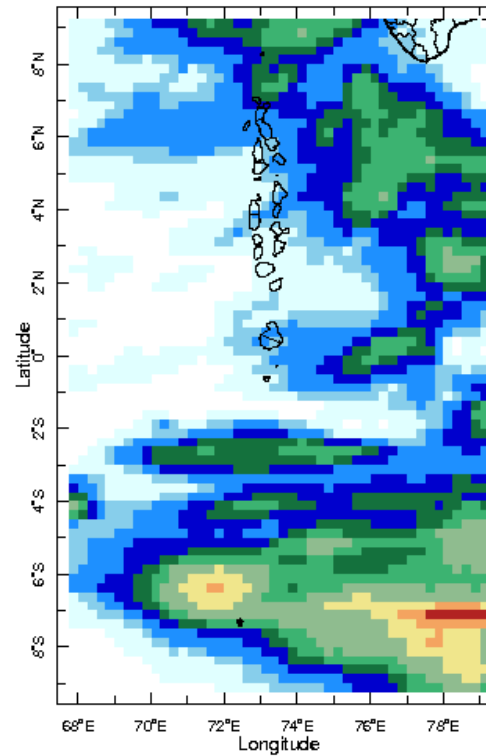


## Daily Rainfall Monitoring

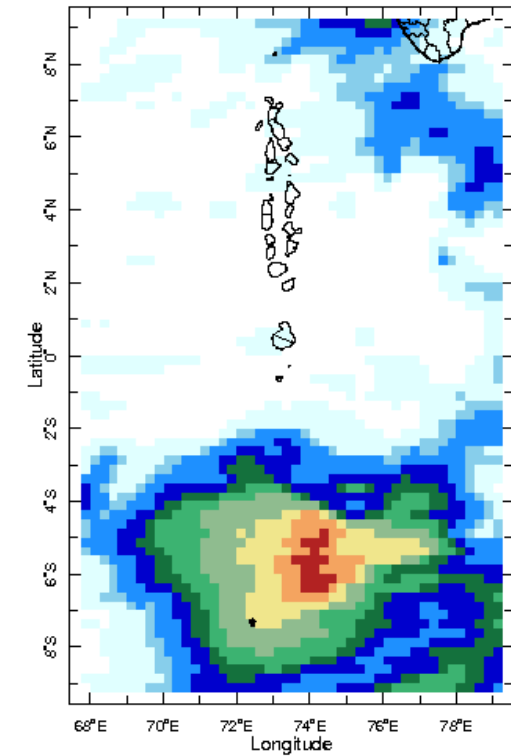
The following figures show the observed rainfall in the last 15 days in Maldives.



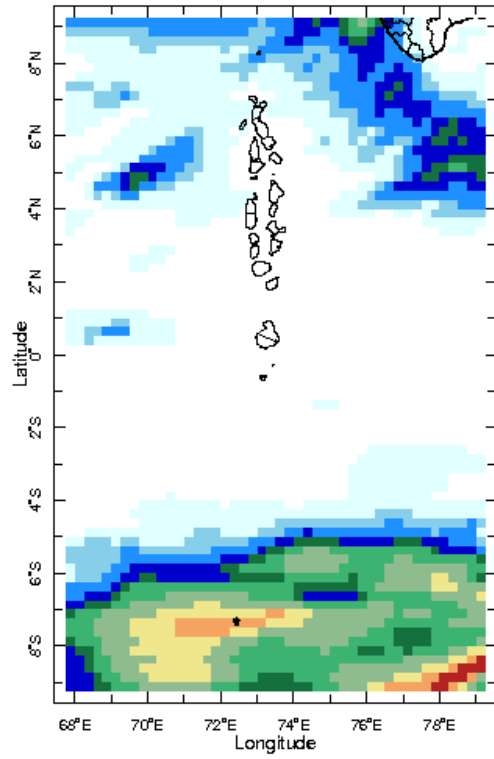
18 Jul 2019



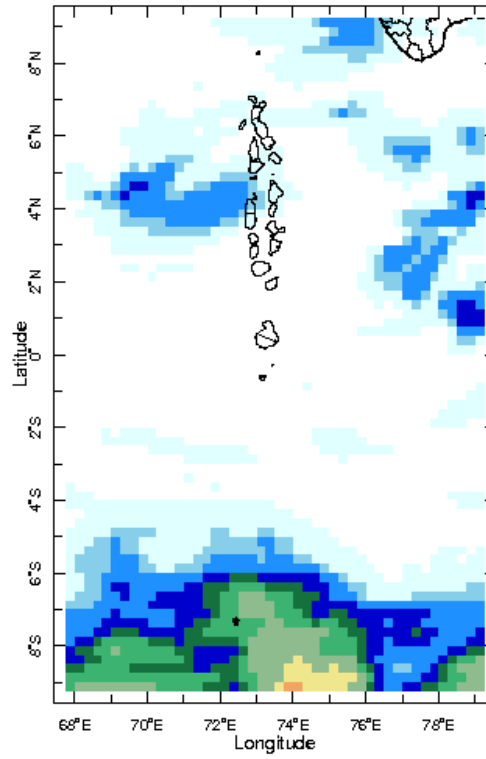
19 Jul 2019



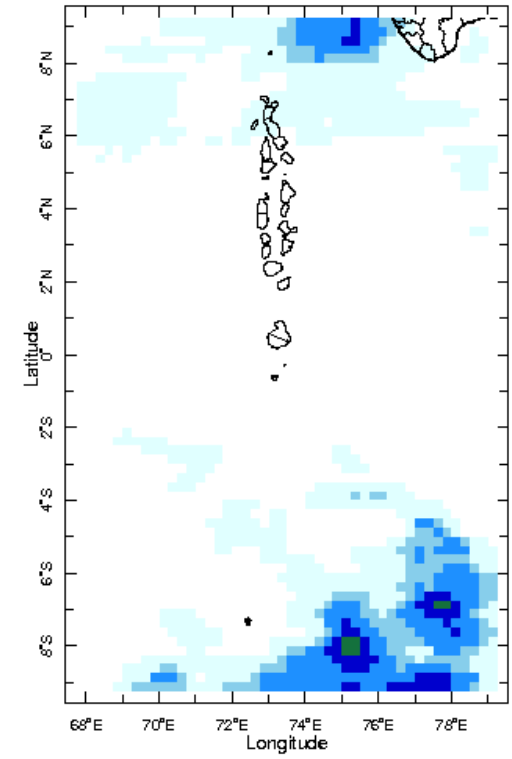
20 Jul 2019



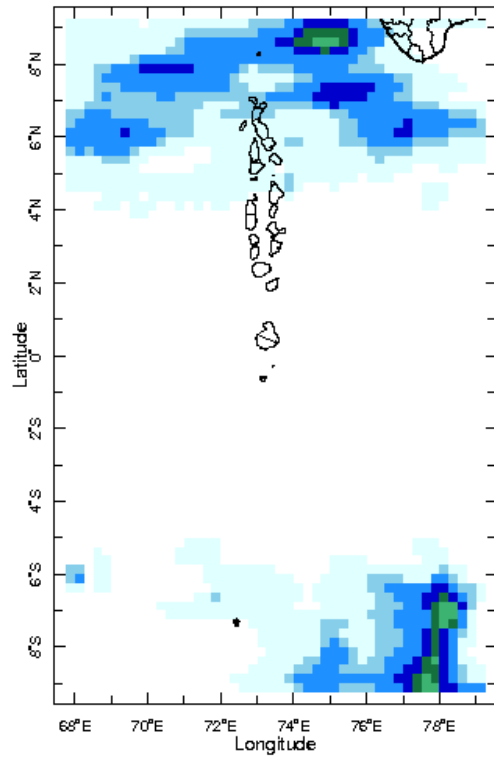
21 Jul 2019



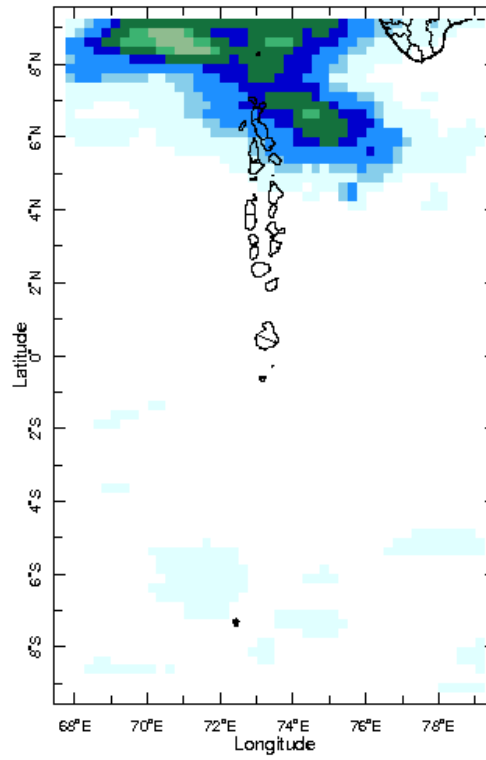
22 Jul 2019



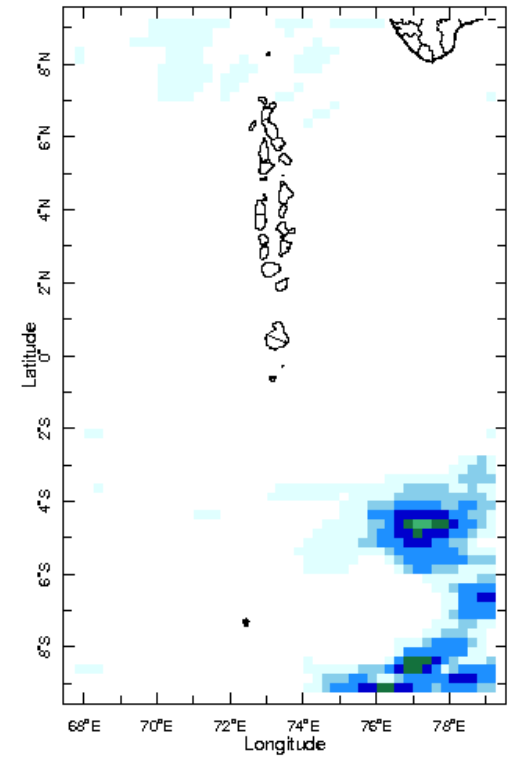
23 Jul 2019



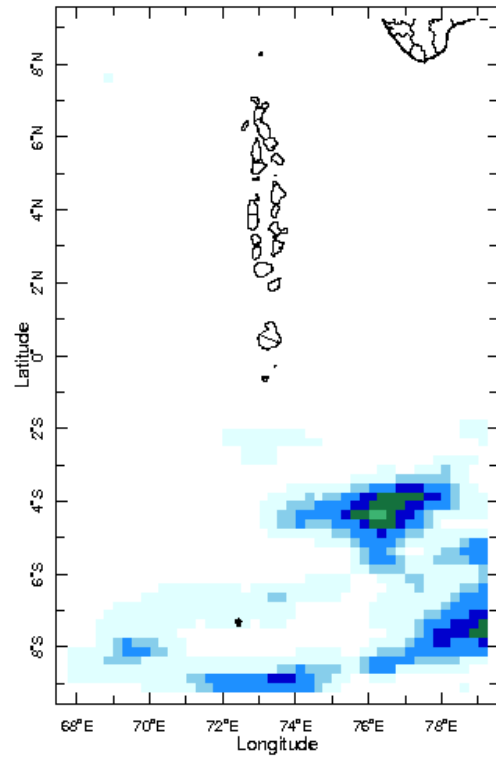
24 Jul 2019



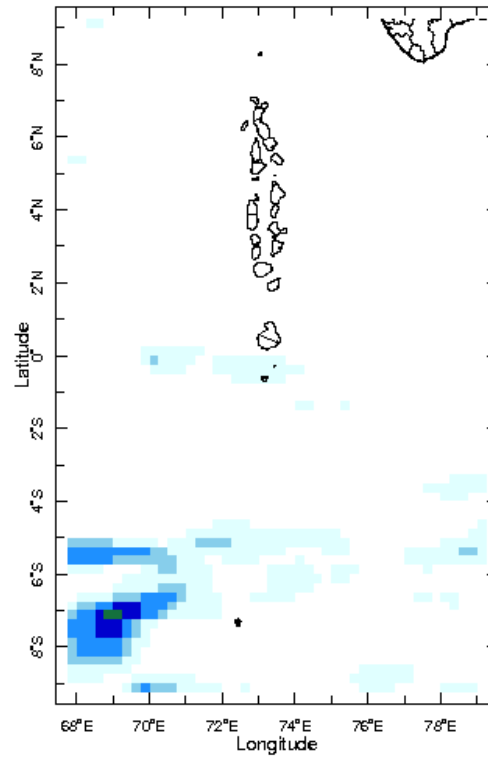
25 Jul 2019



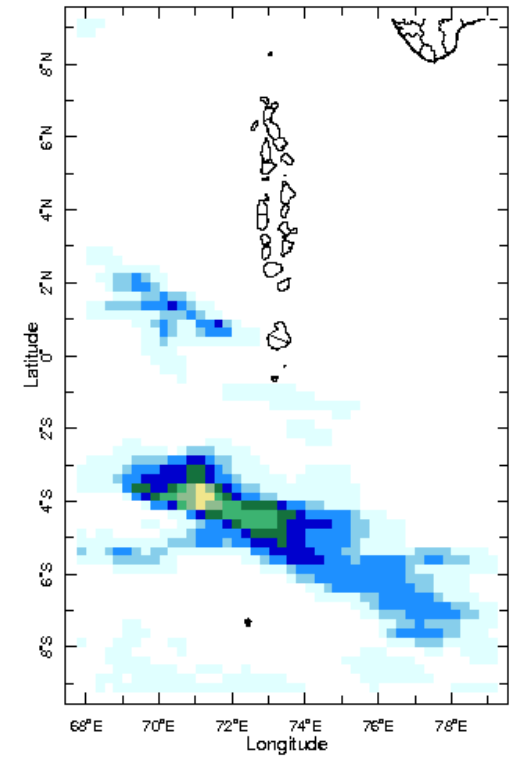
26 Jul 2019



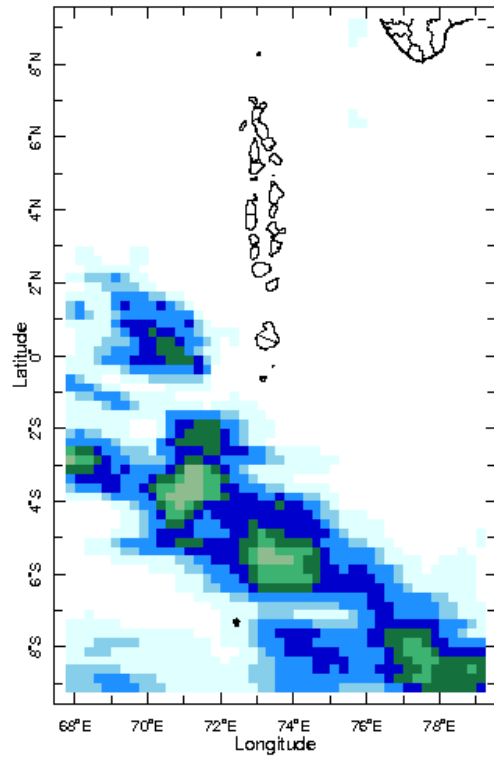
27 Jul 2019



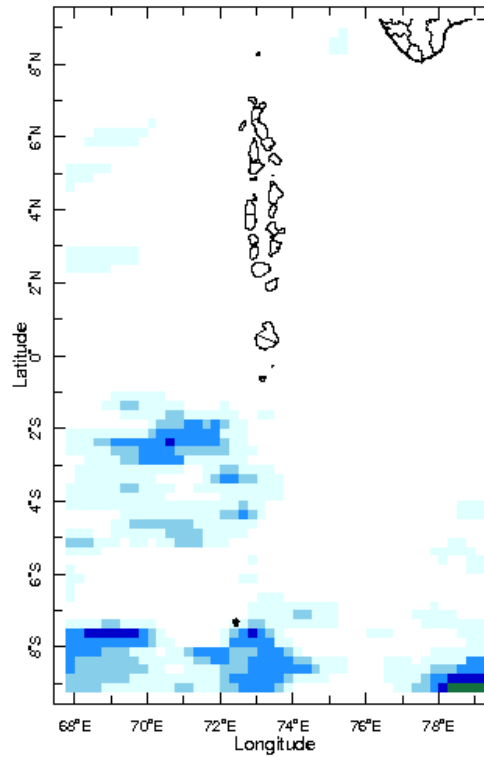
28 Jul 2019



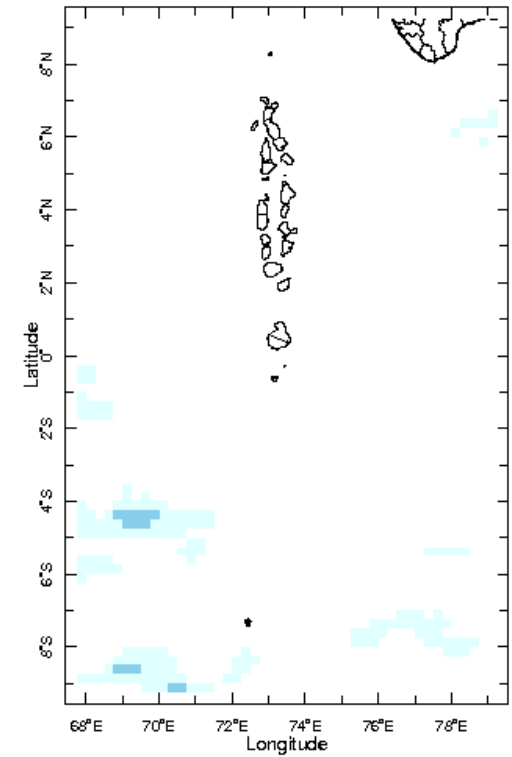
29 Jul 2019



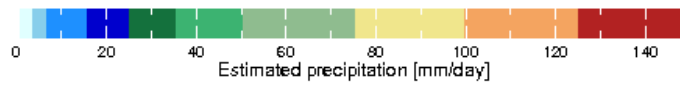
30 Jul 2019



31 Jul 2019

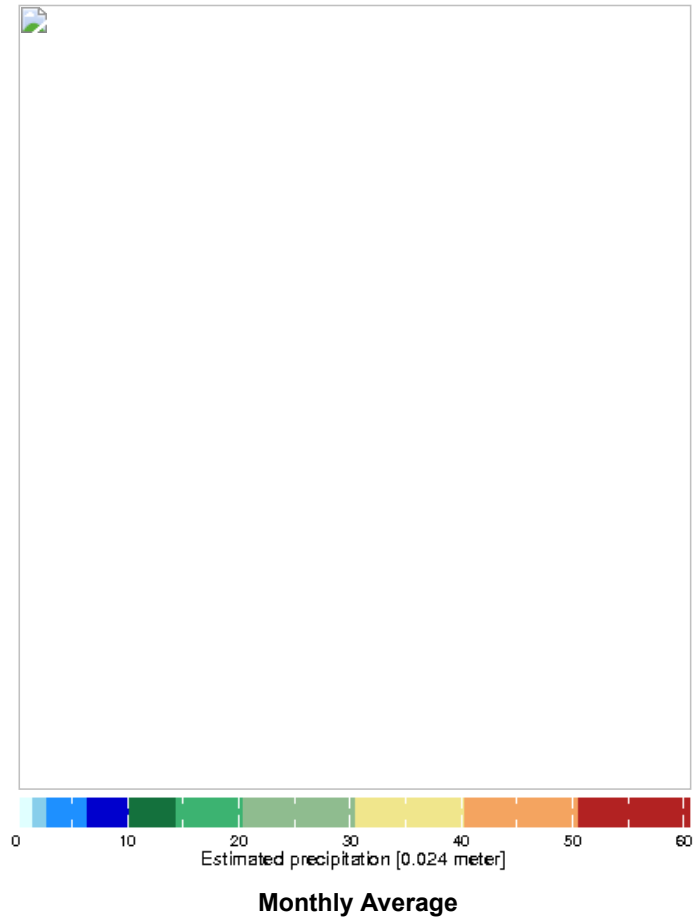


1 Aug 2019



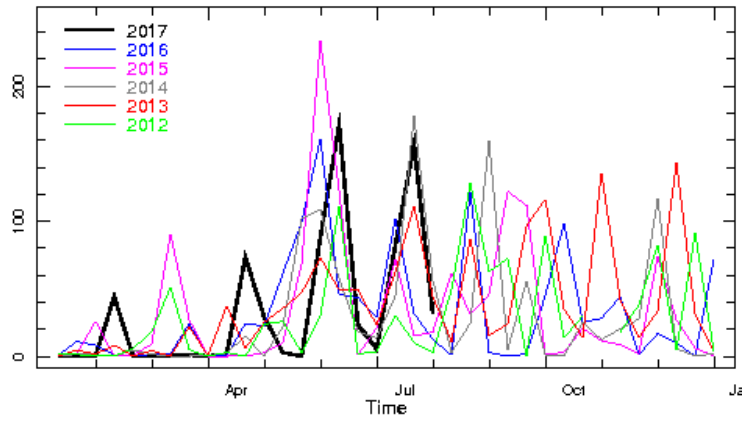
## Monthly Rainfall Monitoring

The figure shows the average observed rainfall in the previous month.



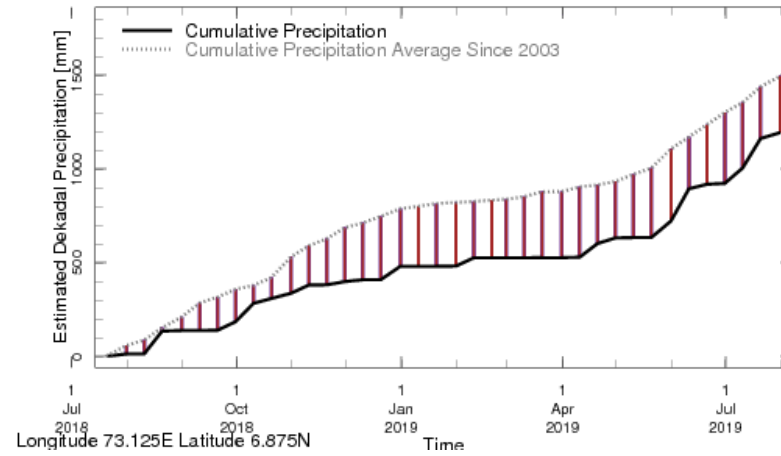
## Monthly and Seasonal Monitoring

Northern Maldives:



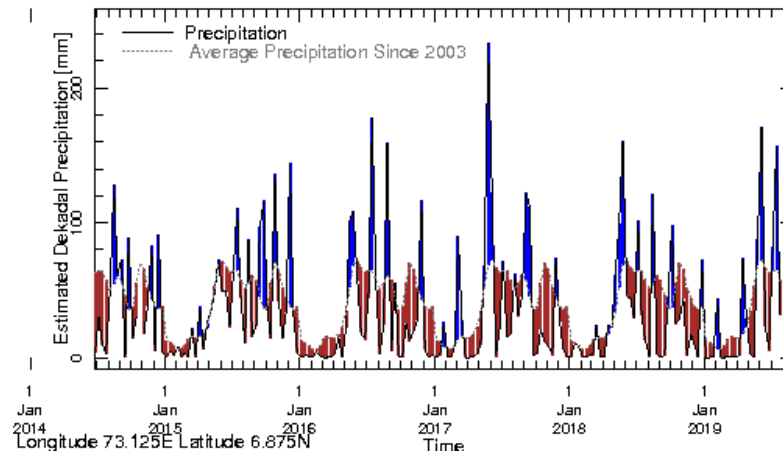
Longitude 73.125E Latitude 6.875N

**Rainfall in the current year (black) compared to rainfall in previous 5 years**



Longitude 73.125E Latitude 6.875N

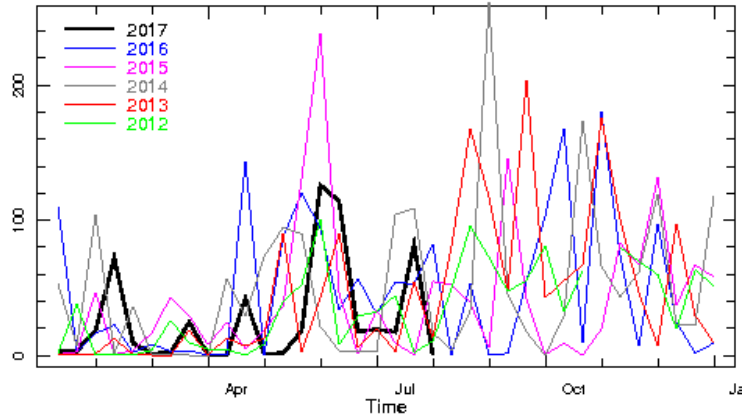
**Rainfall of past 365 days (black) compared to average rainfall since 2003.**



Longitude 73.125E Latitude 6.875N

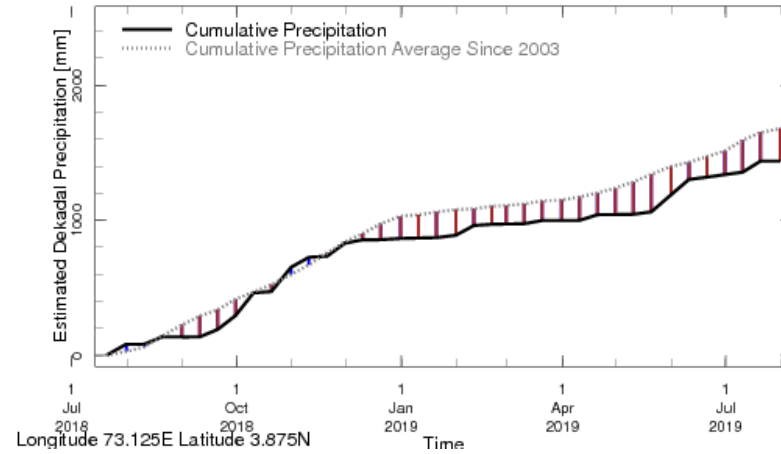
**Rainfall in the past 5 years with above-average rainfall hatched in blue and below-average hatched in brown**

**Central Maldives:**



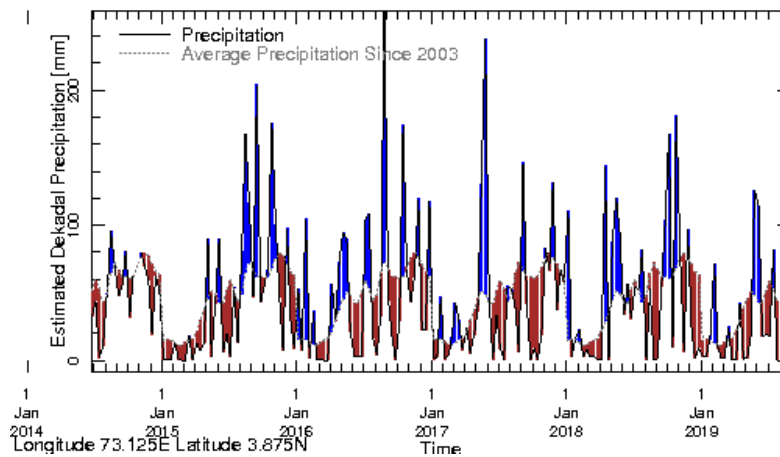
Longitude 73.125E Latitude 3.875N

**Rainfall in the current year (black) compared to rainfall in previous 5 years**



Longitude 73.125E Latitude 3.875N

**Rainfall of past 365 days (black) compared to average rainfall since 2003.**

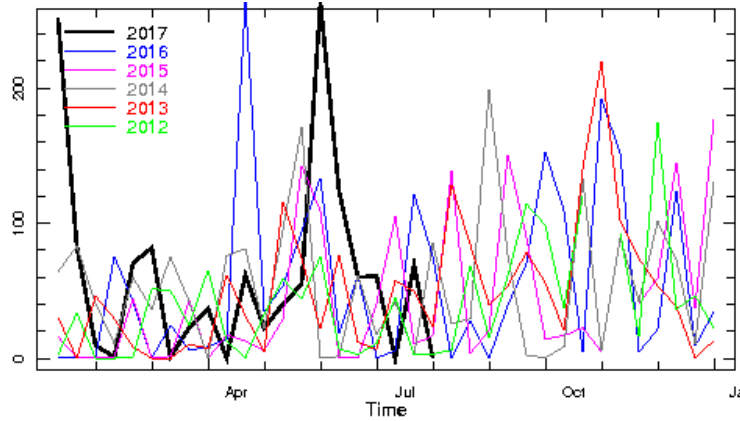


Longitude 73.125E Latitude 3.875N

**Rainfall in the past 5 years with above-average rainfall hatched in blue and below-average hatched in brown**

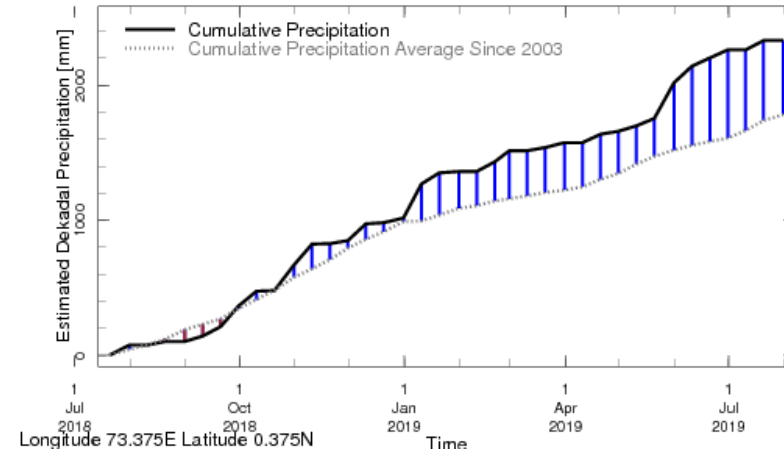


**Southern Maldives:**

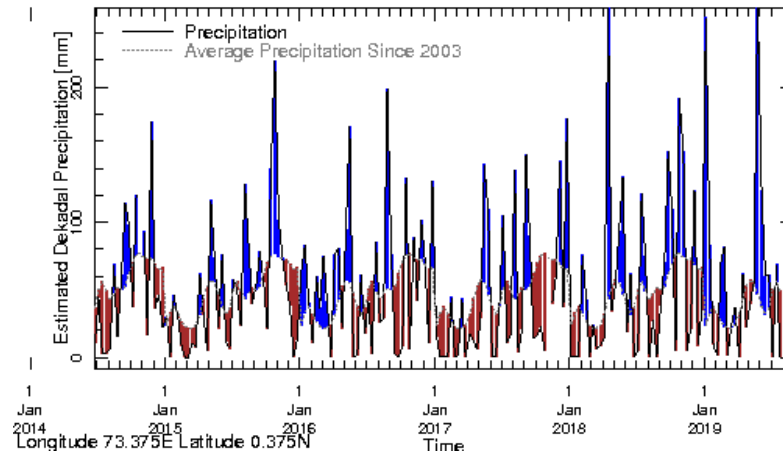


Longitude 73.375E Latitude 0.375N

**Rainfall in the current year (black) compared to rainfall in previous 5 years**



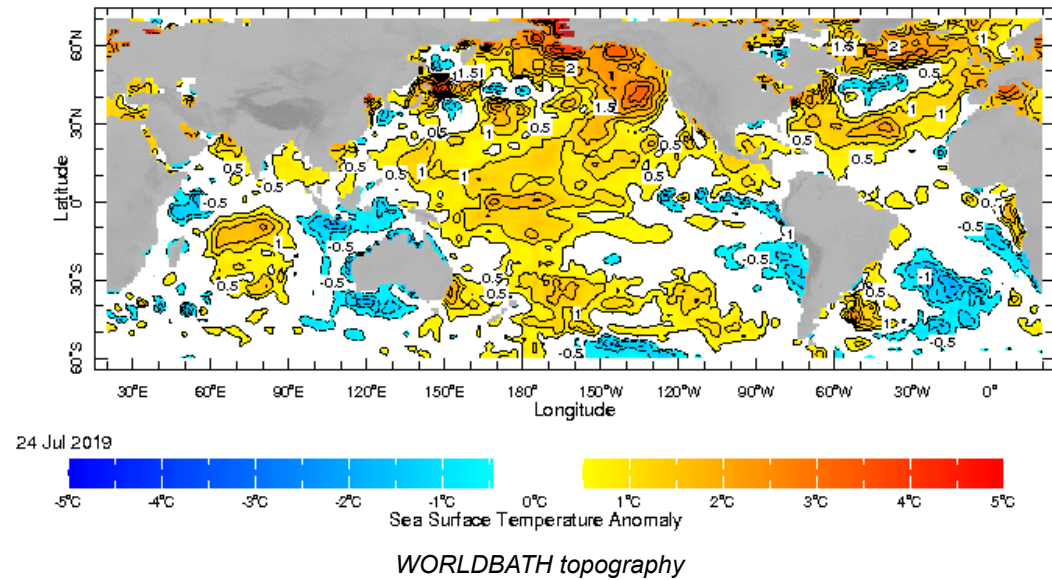
**Rainfall of past 365 days (black) compared to average rainfall since 2003.**



**Rainfall in the past 5 years with above-average rainfall hatched in blue and below-average hatched in brown**

## Ocean Surface Monitoring

---

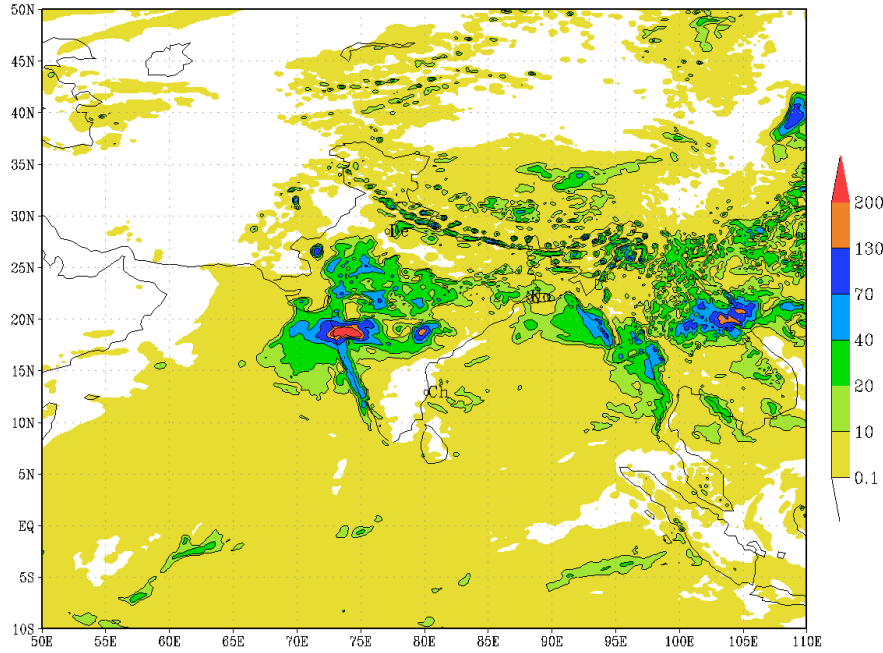


## Daily Rainfall Forecast

---

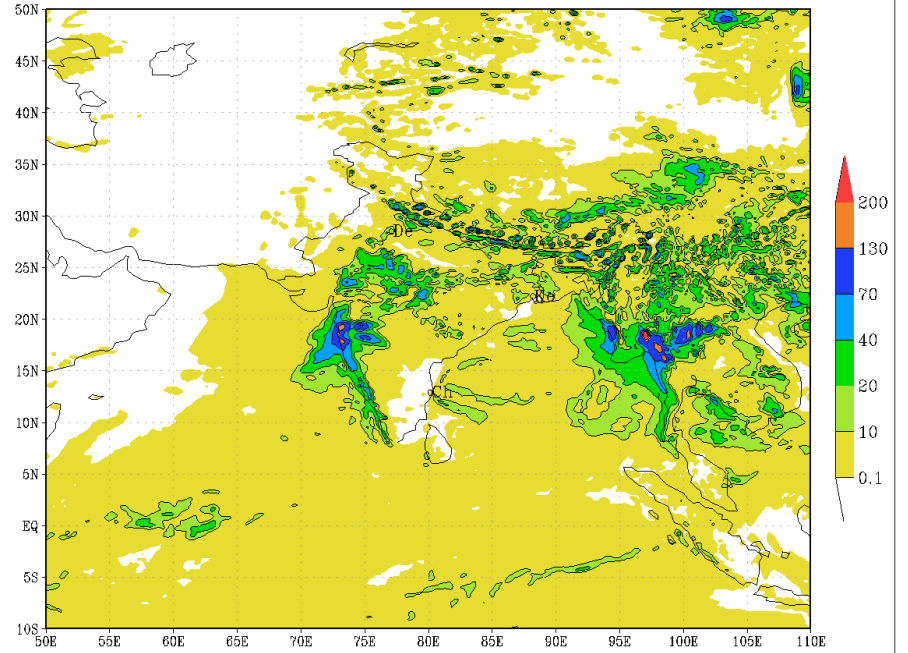
Daily Rainfall forecasts (up to 7 days ahead) from the IMD is provided in figures below. These predictions are from the GFS (T1534) model covering the entire south Asian region.

IMD :GFS MODEL(12 Km) RAINFALL (mm) FORECAST (24 HR)  
based on 00 UTC of 03-08-2019 valid for 03 UTC of 04-08-2019



(Background does not depict political boundary)

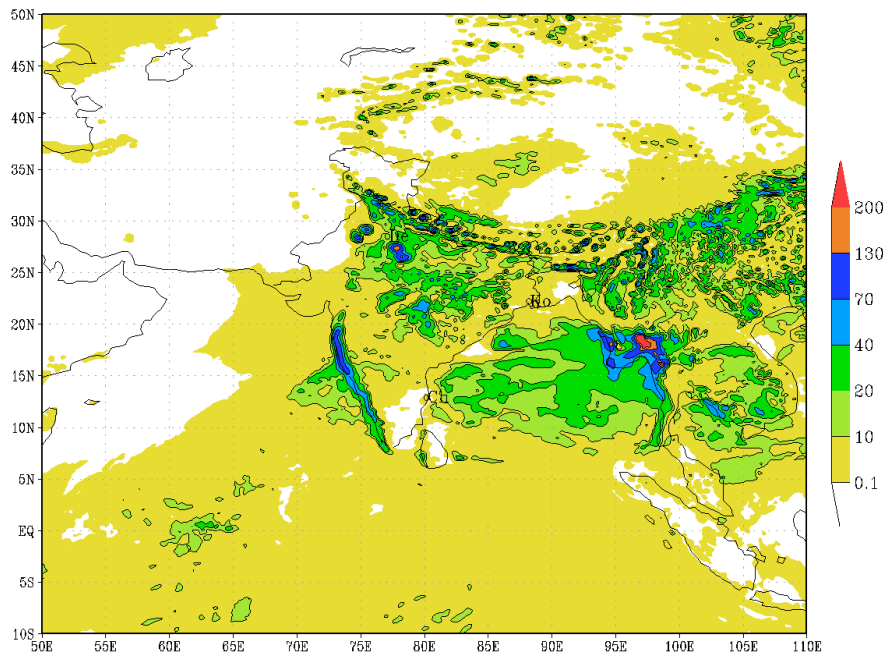
IMD :GFS MODEL(12 Km) RAINFALL (mm) FORECAST (48 HR)  
based on 00 UTC of 03-08-2019 valid for 03 UTC of 05-08-2019



(Background does not depict political boundary)

IMD :GFS MODEL(12 Km) RAINFALL (mm) FORECAST (72 HR)

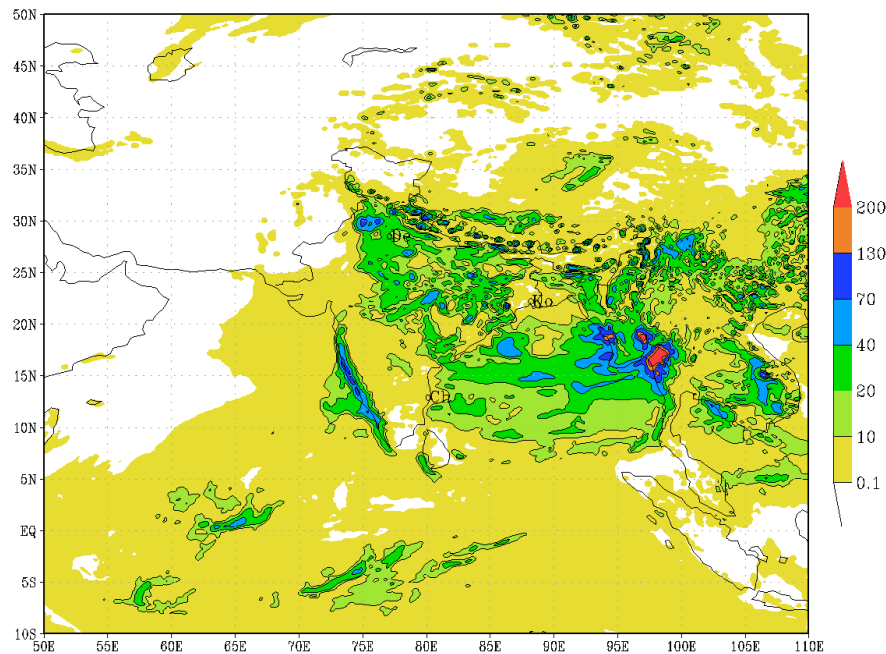
based on 00 UTC of 03-08-2019 valid for 03 UTC of 06-08-2019



(Background does not depict political boundary)

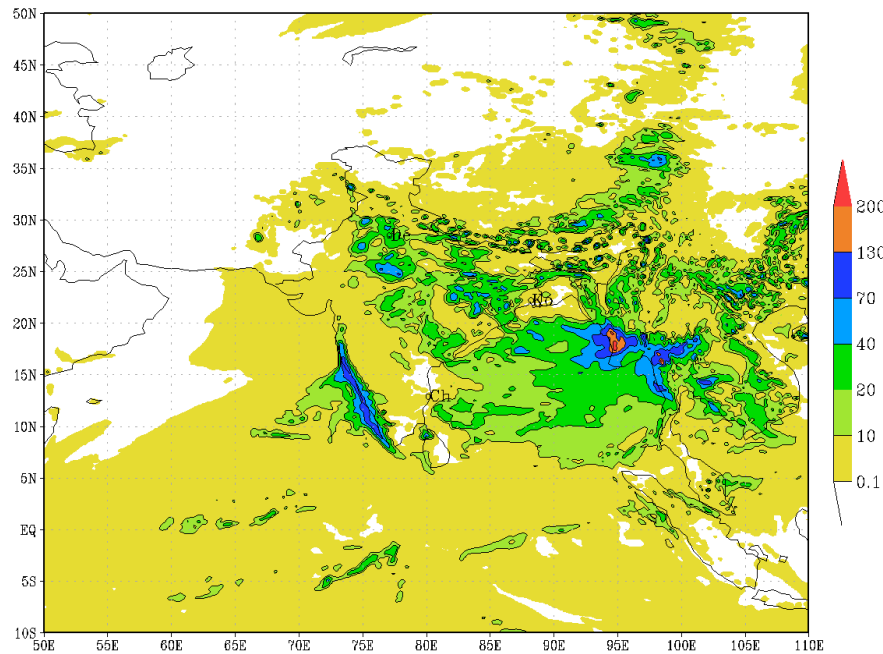
IMD :GFS MODEL(12 Km) RAINFALL (mm) FORECAST (96 HR)

based on 00 UTC of 03-08-2019 valid for 03 UTC of 07-08-2019



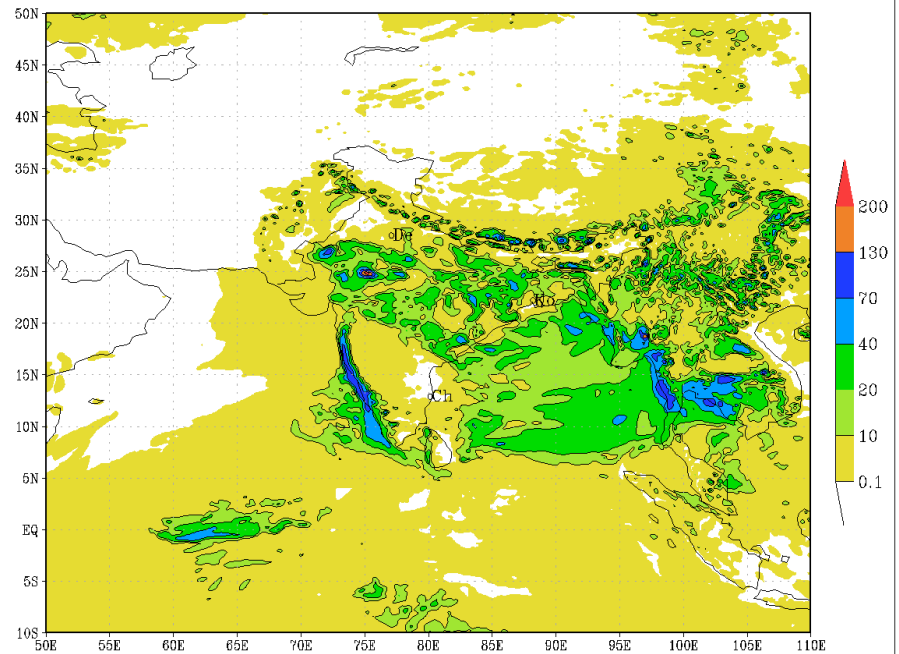
(Background does not depict political boundary)

IMD :GFS MODEL(12 Km) RAINFALL (mm) FORECAST (120 HR)  
based on 00 UTC of 03-08-2019 valid for 03 UTC of 08-08-2019

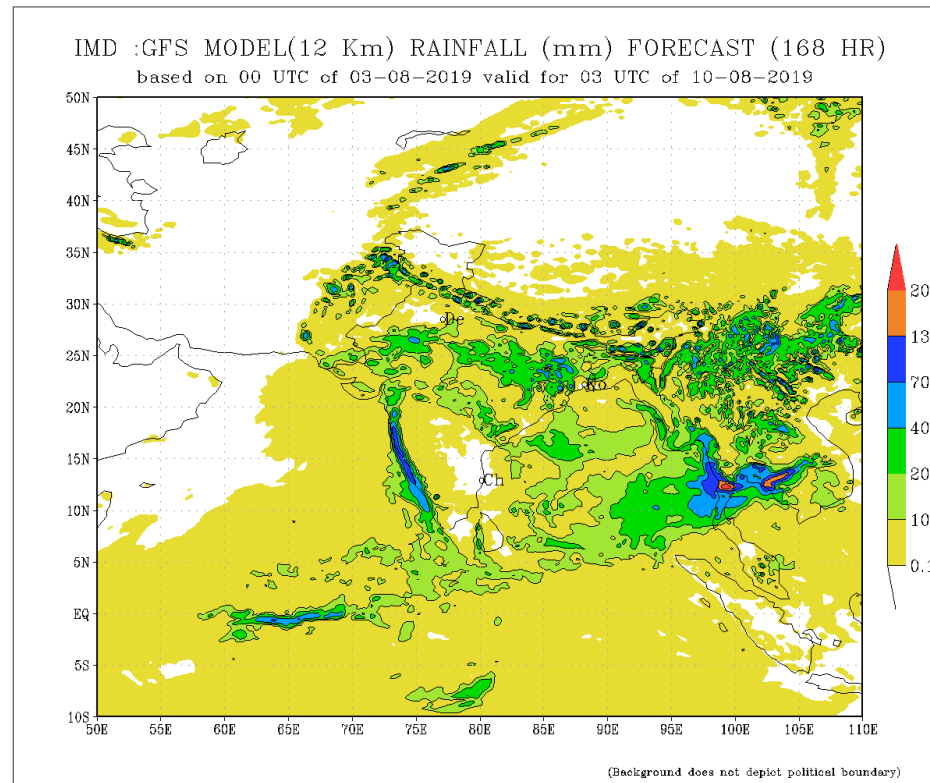


(Background does not depict political boundary)

IMD :GFS MODEL(12 Km) RAINFALL (mm) FORECAST (144 HR)  
based on 00 UTC of 03-08-2019 valid for 03 UTC of 09-08-2019



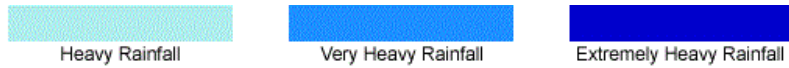
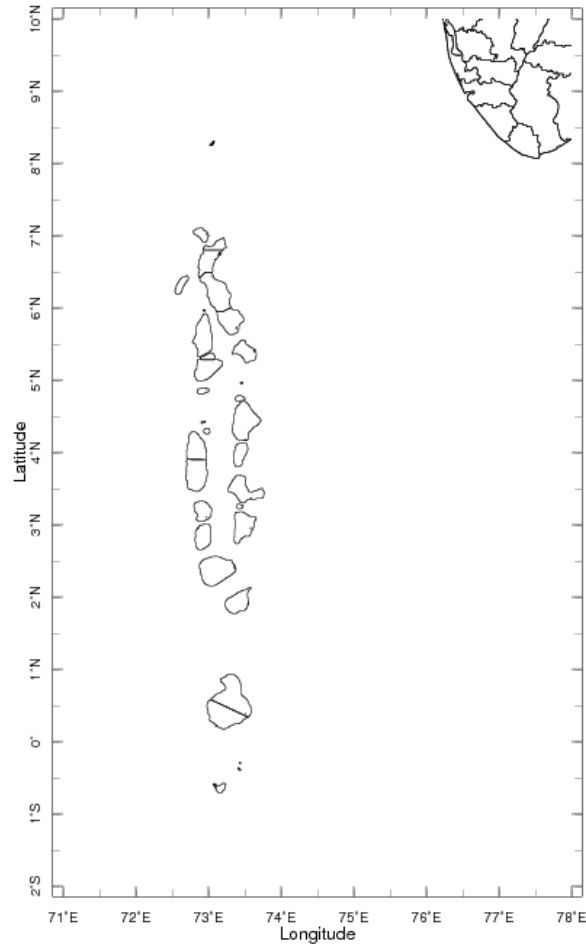
(Background does not depict political boundary)



## Weekly Rainfall Forecast

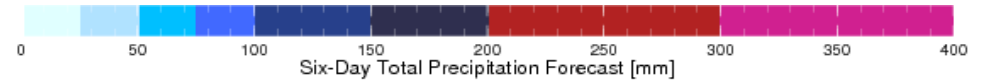
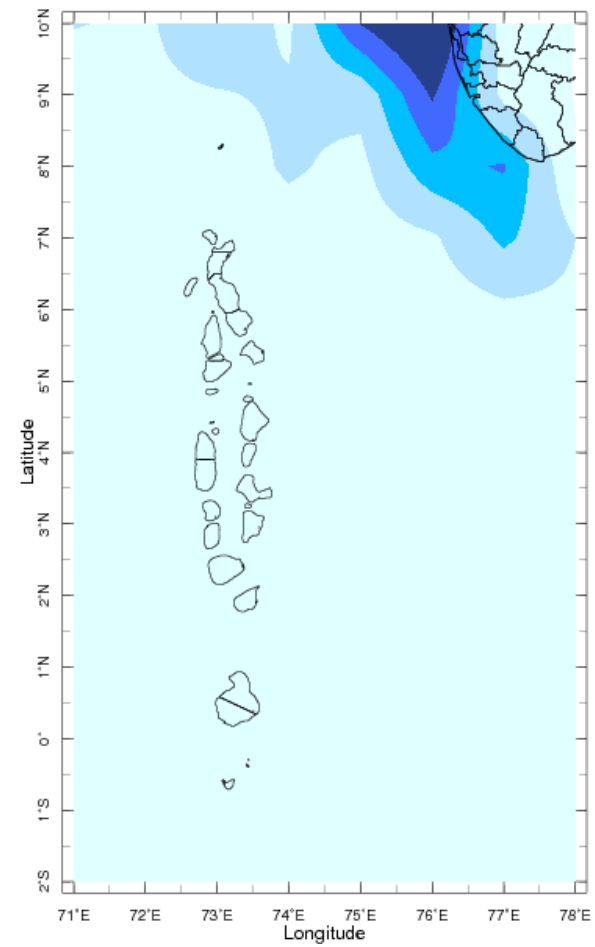
Total rainfall forecast from the IRI for next six days is provided in figures below. The figure to the left shows the expectancy of heavy rainfall events during these six days while the figure to the right is the prediction of total rainfall amount during this period.

Forecast for 2-7 Aug 2019 Issued 0000 2 Aug 2019



**Extreme Rainfall Forecast**

Forecast for 2-7 Aug 2019 Issued 0000 2 Aug 2019



**Total Six Day Precipitation Forecast**