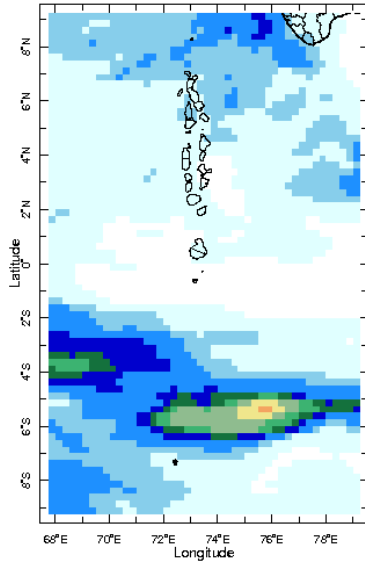


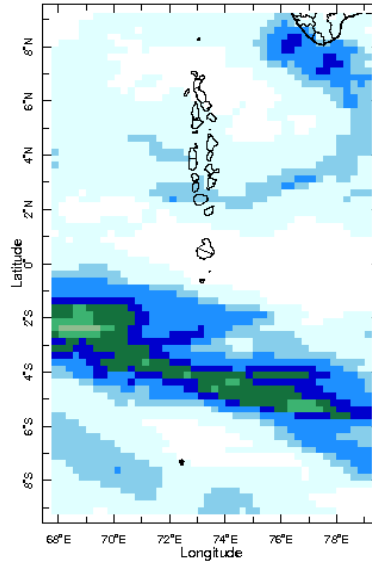


## Daily Rainfall Monitoring

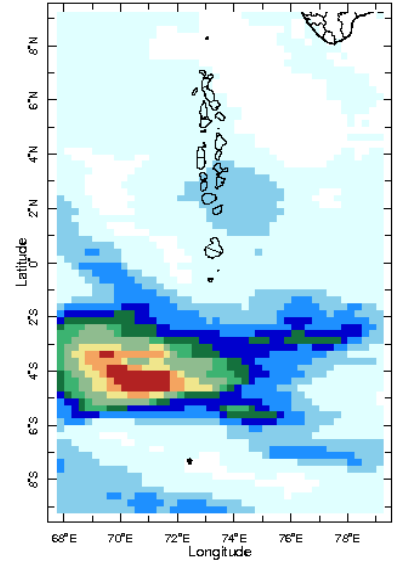
The following figures show the observed rainfall in the last 15 days in Maldives.



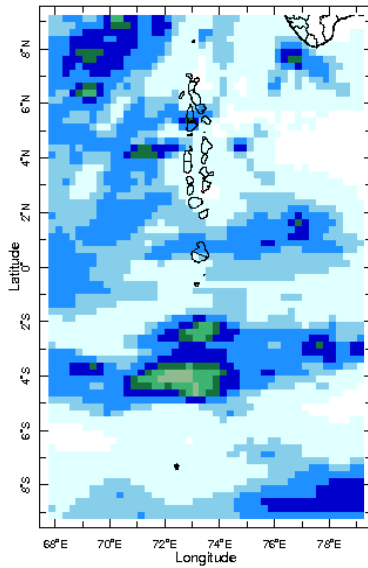
21 Jul 2024



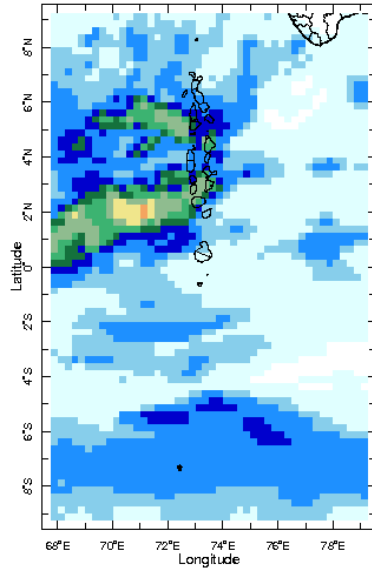
22 Jul 2024



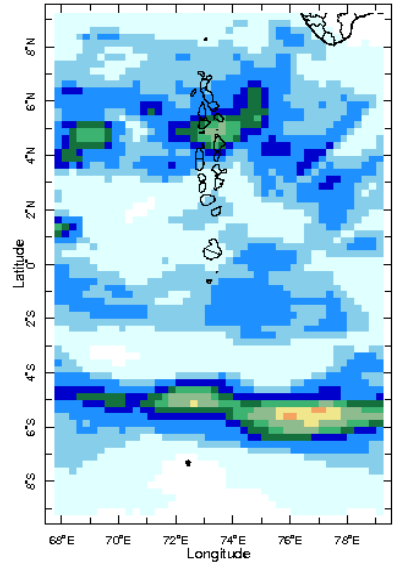
23 Jul 2024



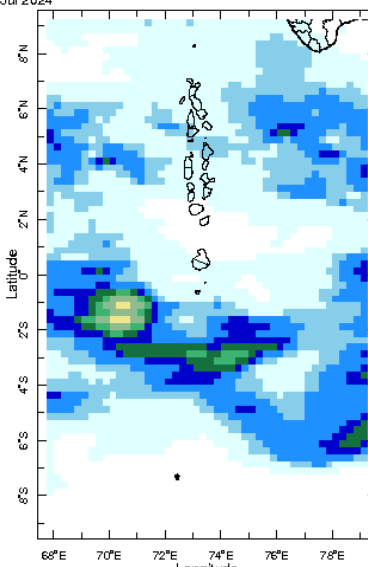
24 Jul 2024



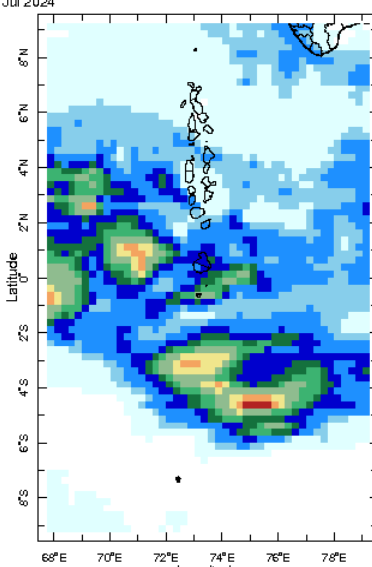
25 Jul 2024



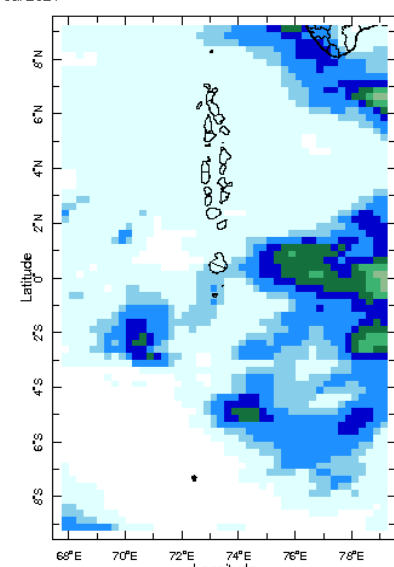
26 Jul 2024



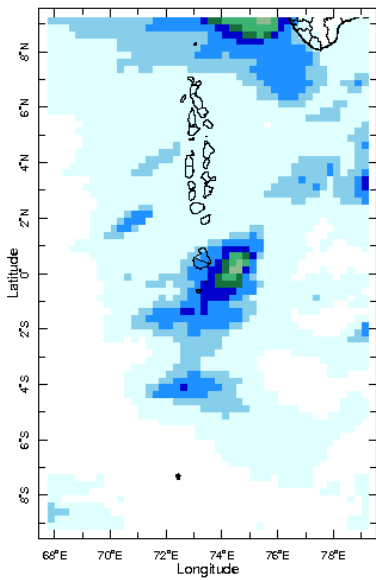
27 Jul 2024



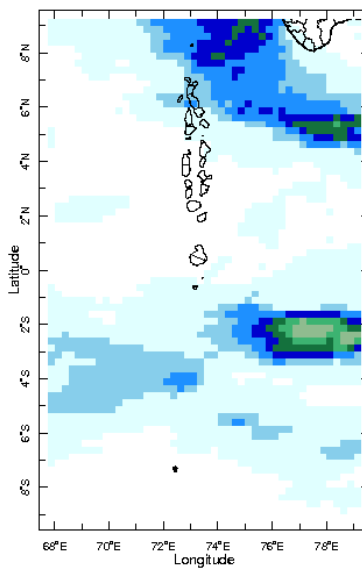
28 Jul 2024



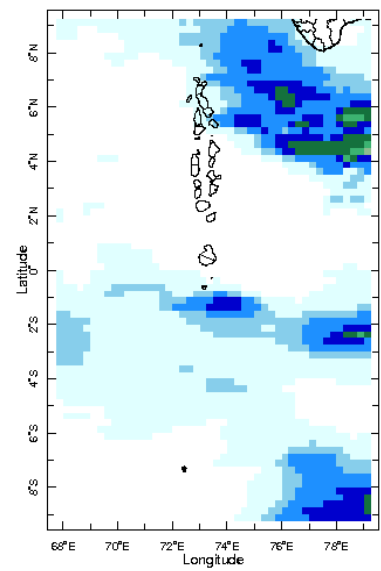
29 Jul 2024



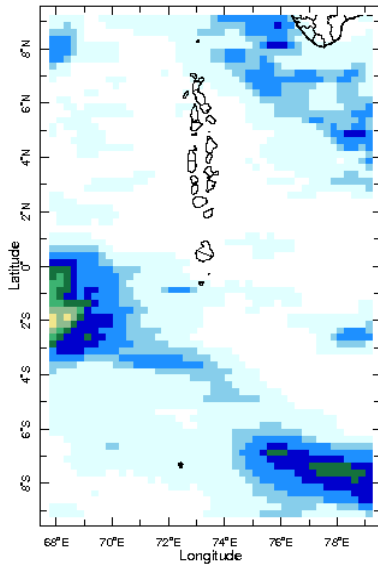
30 Jul 2024



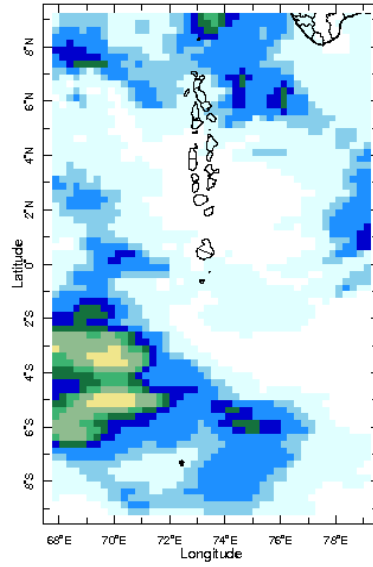
31 Jul 2024



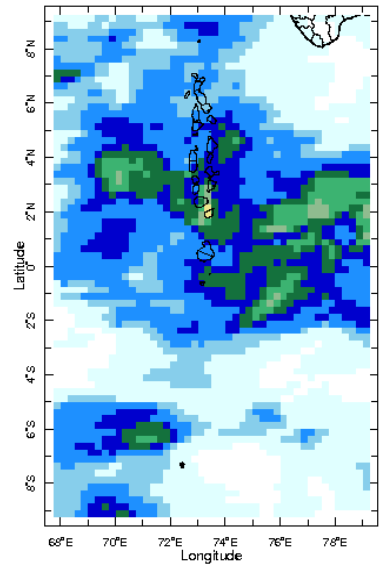
1 Aug 2024



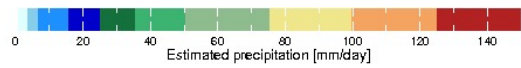
2 Aug 2024



3 Aug 2024

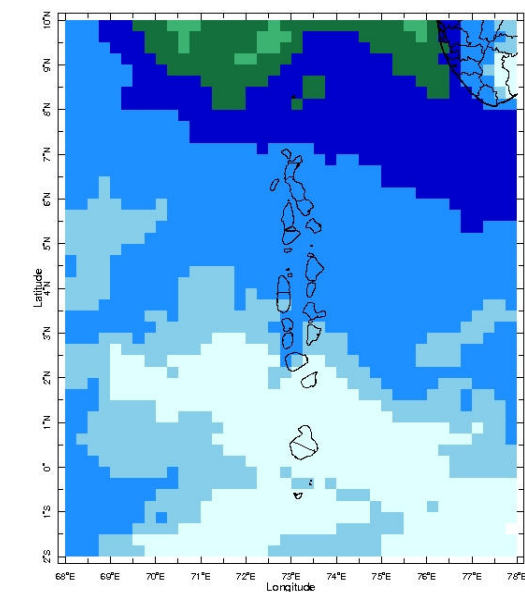


4 Aug 2024

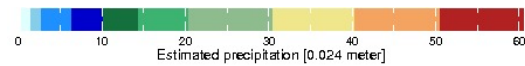


## Monthly Rainfall Monitoring

The figure shows the average observed rainfall in the previous month.



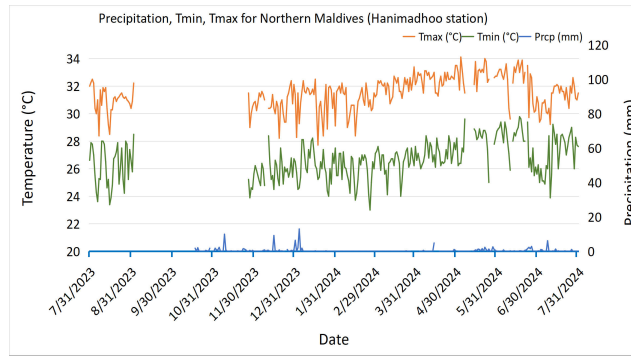
Jun 2024



Monthly Average

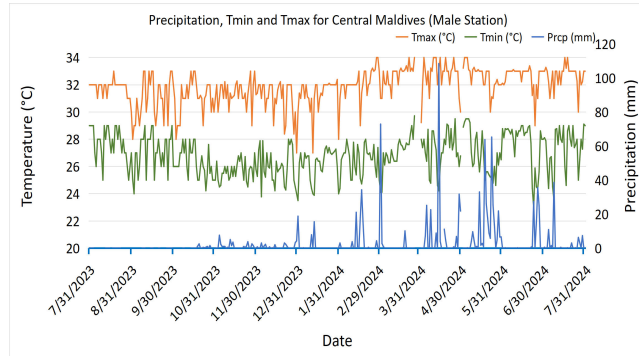
# Monthly and Seasonal Monitoring

## Northern Maldives:



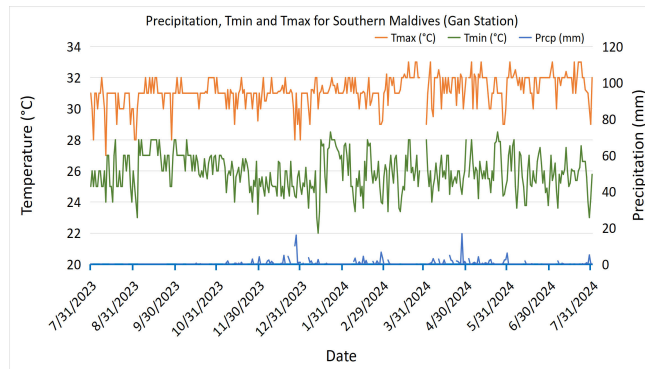
Daily Rainfall, Tmin & Tmax for the previous year in Hanimadhoo station (2023 July to 2024 July )

## Central Maldives:



Daily Rainfall, Tmin & Tmax for the previous year in Male station (2023 July to 2024 July )

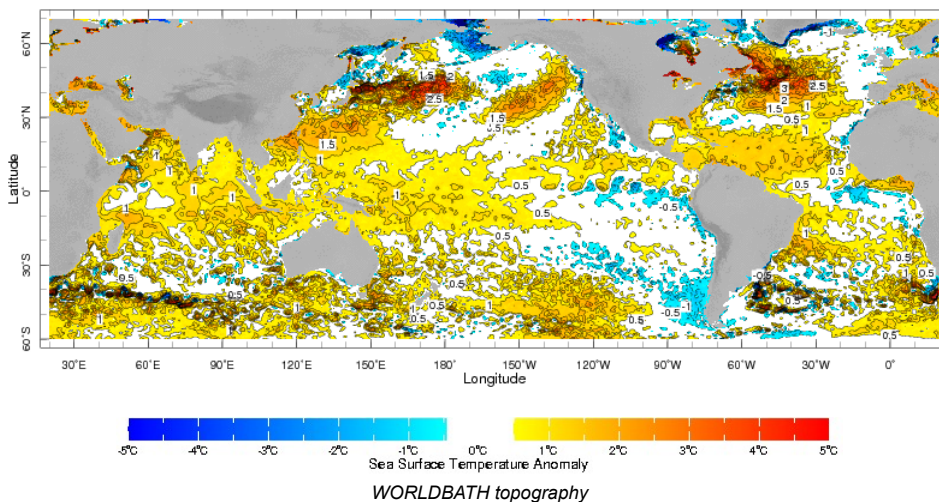
## Southern Maldives:



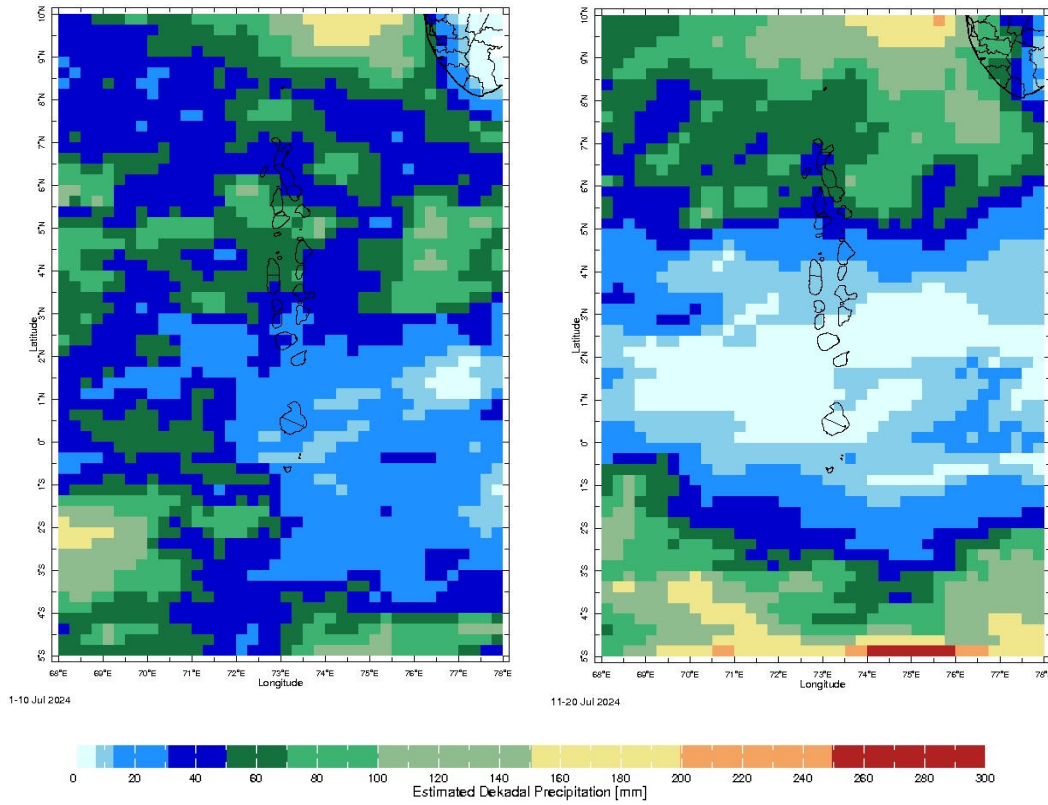
Daily Rainfall, Tmin & Tmax for the previous year in Gan station (2023 July to 2024 July )

## Ocean Surface Monitoring

zlev 0.0 meters Time 9-15 Jul 2024

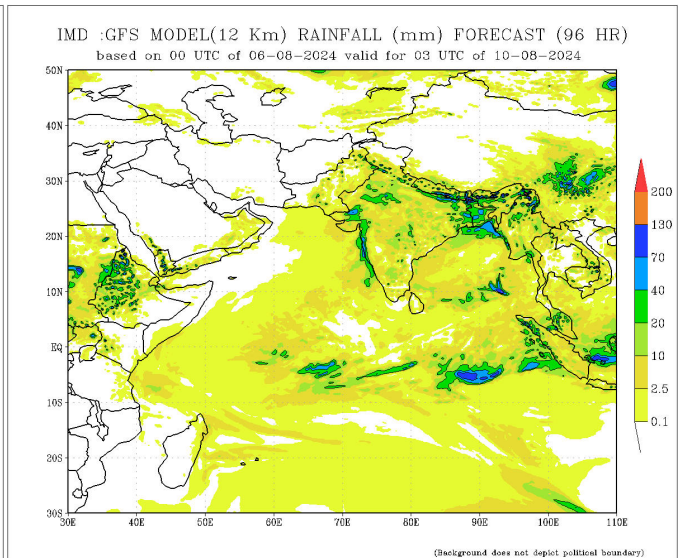
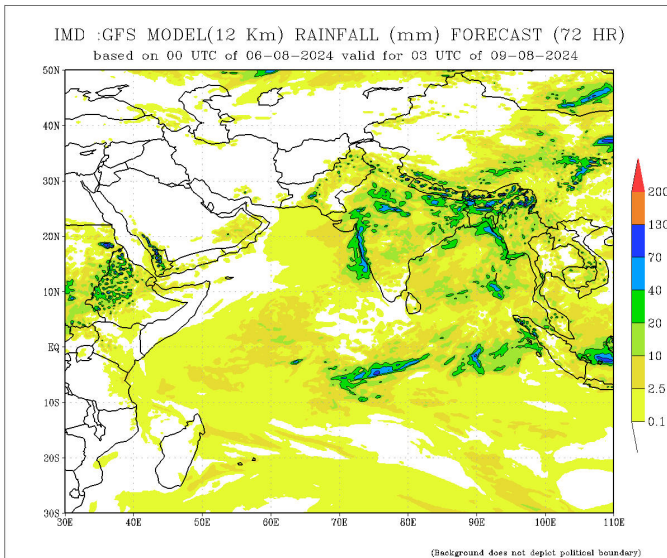
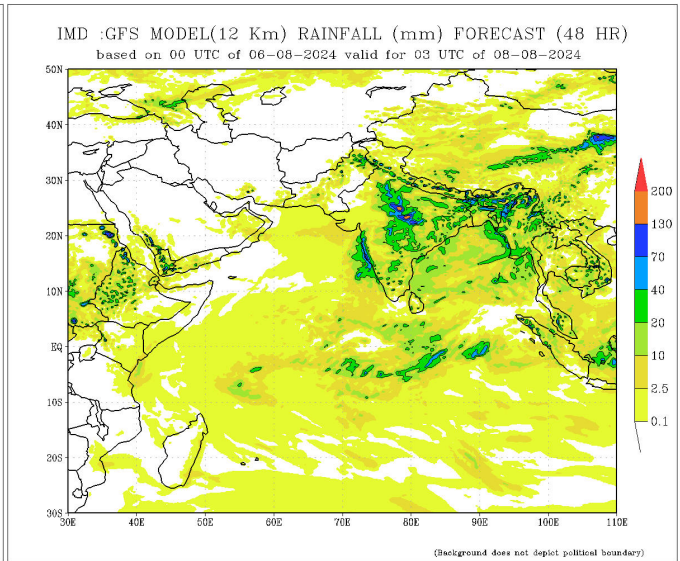
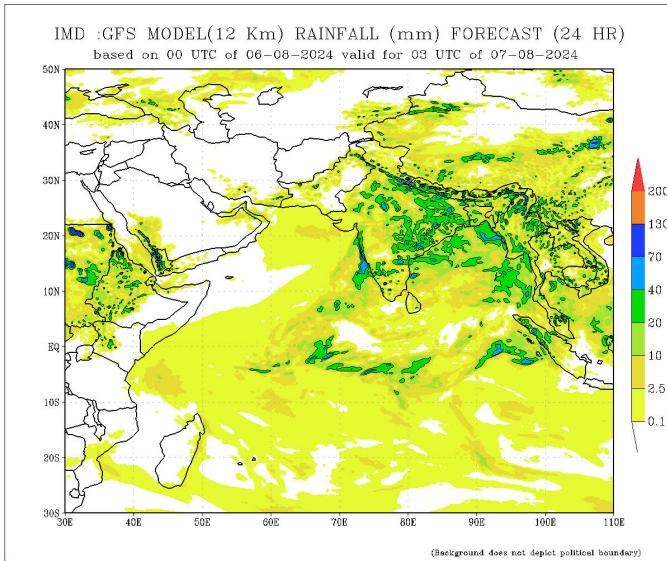


## Dekadal (10 Day) Satellite Derived Rainfall Estimates

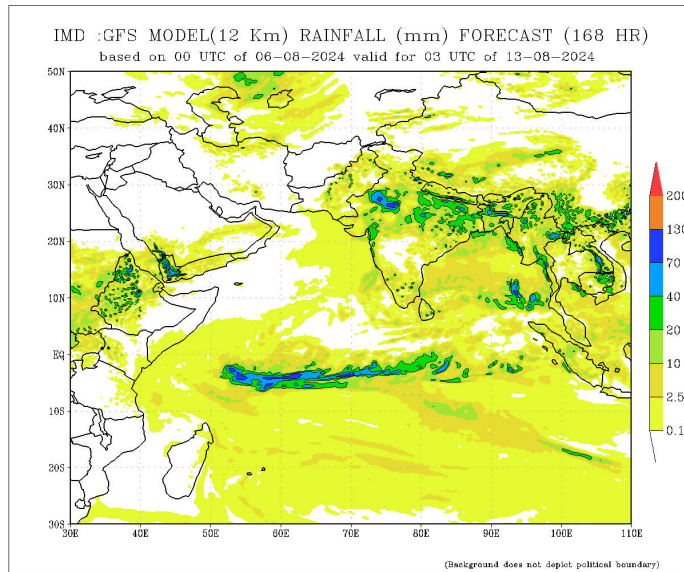
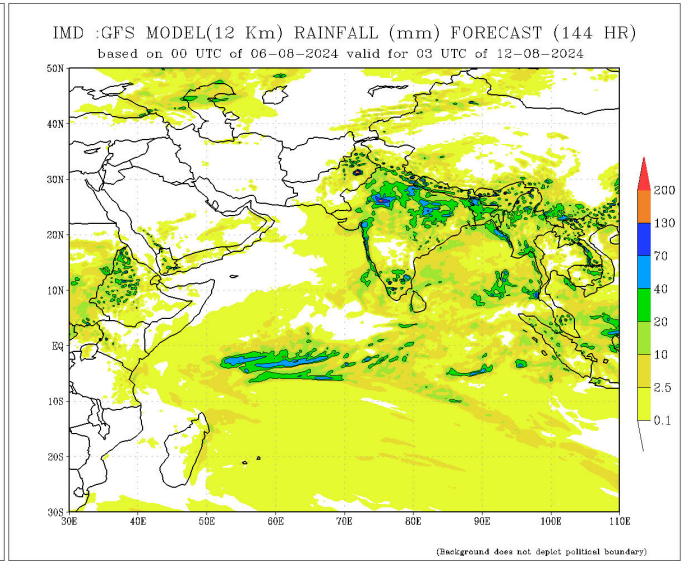
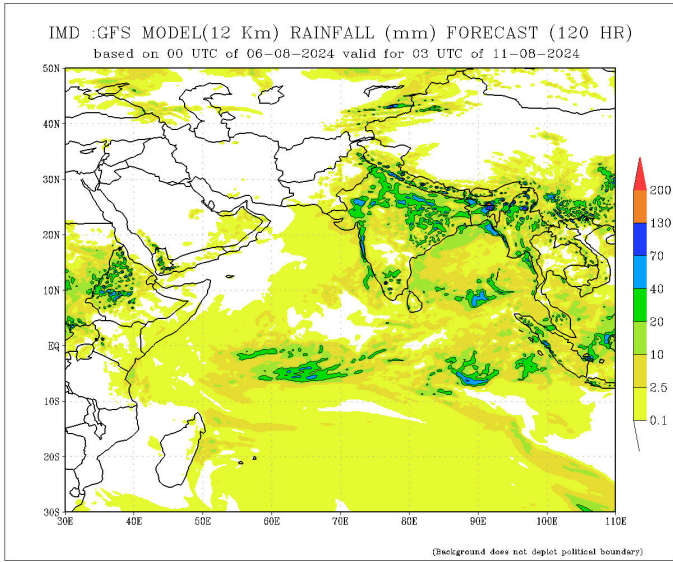


## Daily Rainfall Forecast

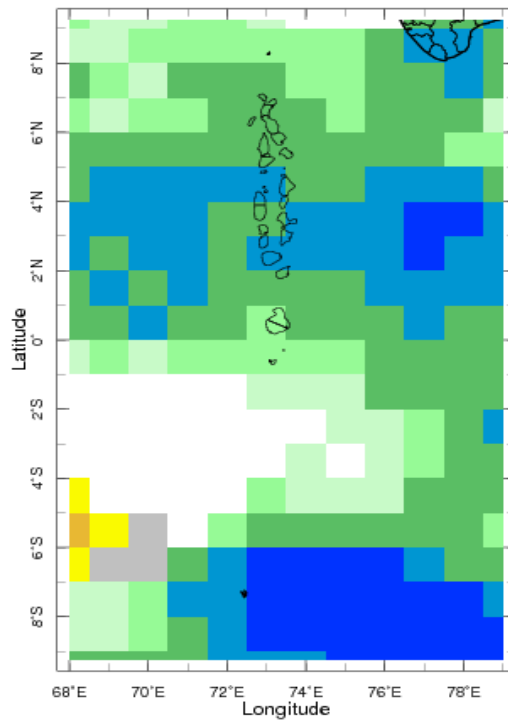
Daily Rainfall forecasts (up to 7 days ahead) from the IMD is provided in figures below. These predictions are from the GFS (T1534) model covering the entire south Asian region.



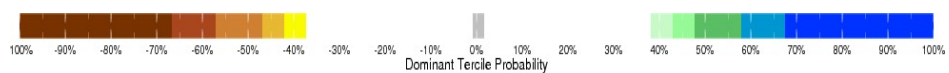




### Weekly Precipitation Forecast



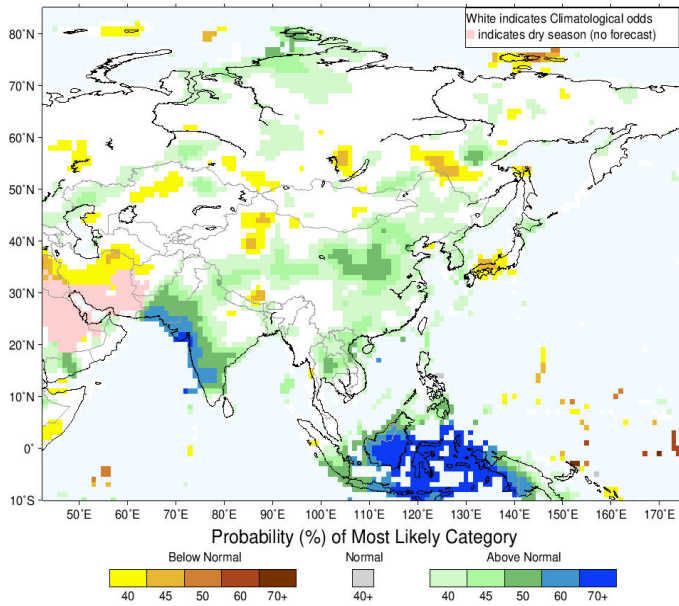
10-23 Aug 2024 IRI SubX Precipitation Forecast issued 0000



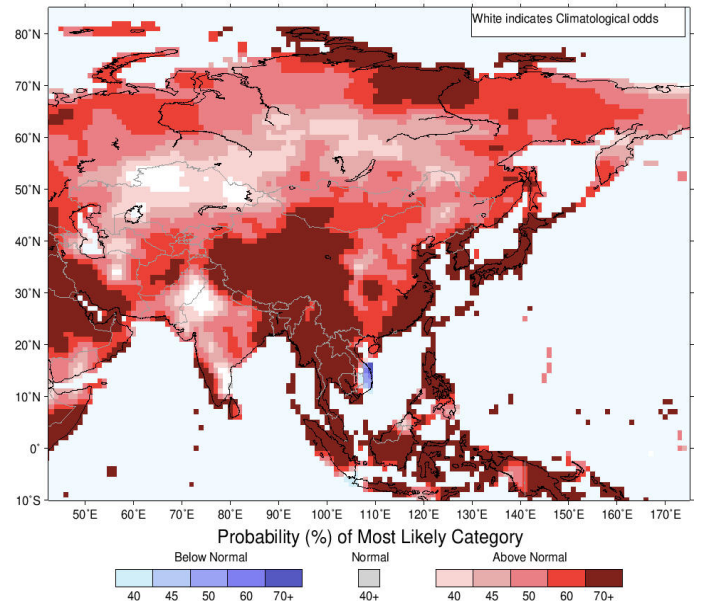
## Seasonal Rainfall and Temperature Forecast

Following is the latest seasonal precipitation and temperature prediction for the next 3 months by the IRI. The color shading indicates the probability of the most dominant tercile -- that is, the tercile having the highest forecast probability. The color bar alongside the map defines these dominant tercile probability levels. The upper side of the color bar shows the colors used for increasingly strong probabilities when the dominant tercile is the above-normal tercile, while the lower side shows likewise for the below-normal tercile. The gray color indicates an enhanced probability for the near-normal tercile (nearly always limited to 40%).

IRI Multi-Model Probability Forecast for Precipitation for August-September-October 2024, Issued July 2024



IRI Multi-Model Probability Forecast for Temperature for August-September-October 2024, Issued July 2024



T

Subscribe to our Monthly Maldives Newsletter

Subscribe

Follow @fectmv

Contact Us  
 email: [fectmv@gmail.com](mailto:fectmv@gmail.com)  
 phone: (+96) 07 788010  
 blog: [www.lectmv.blogspot.com](http://www.lectmv.blogspot.com)

Foundation for Environment, Climate & Technology,  
 REM, Madhrasaadhoshuge,  
 Henveiru, Hadheebee Magu,  
 Male', 20184,  
 Maldives