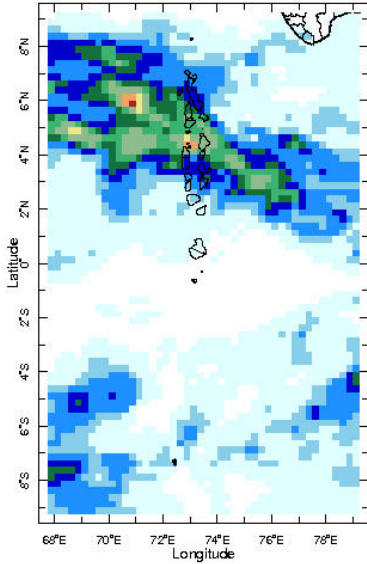


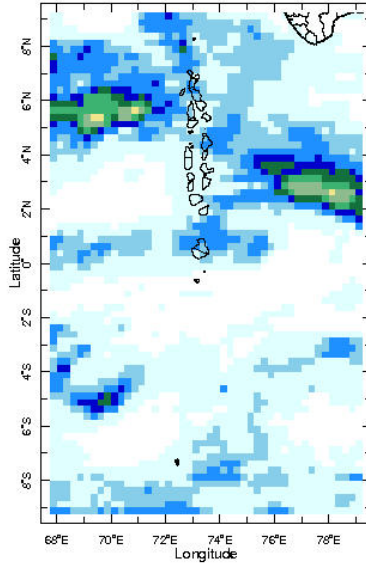


Daily Rainfall Monitoring

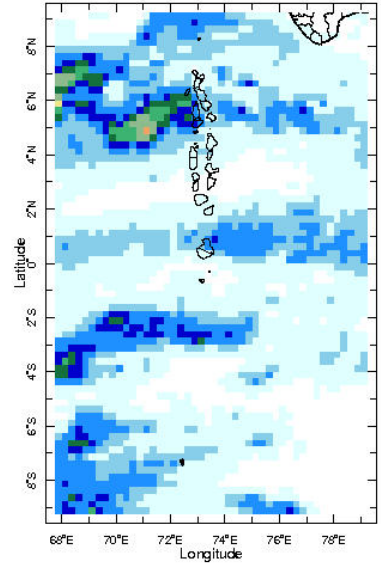
The following figures show the observed rainfall in the last 15 days in Maldives.



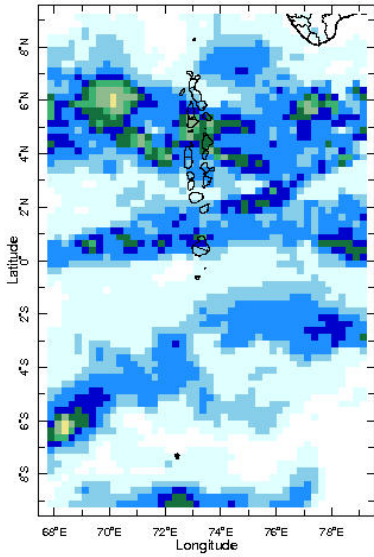
17 Dec 2024



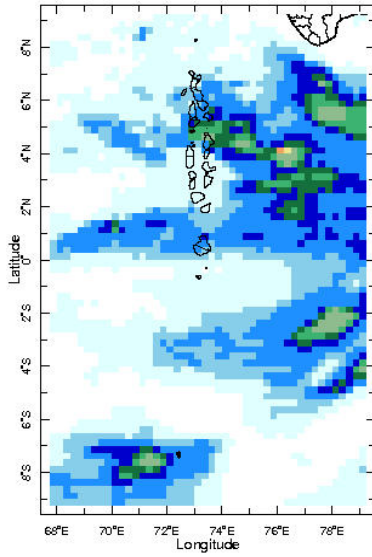
18 Dec 2024



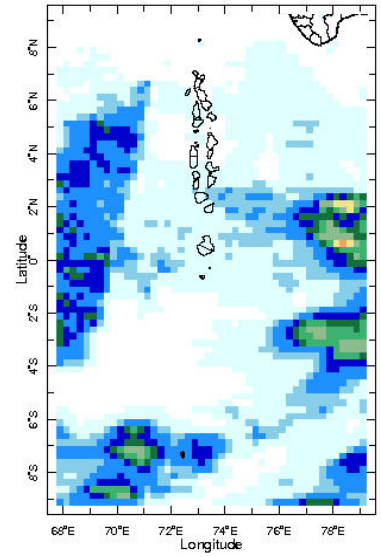
19 Dec 2024



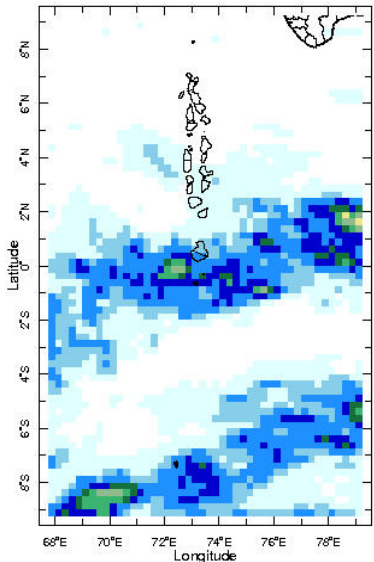
20 Dec 2024



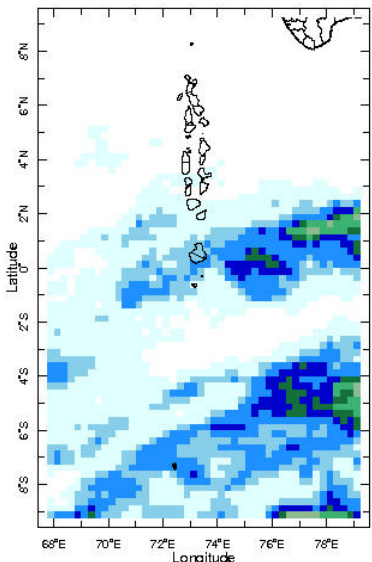
21 Dec 2024



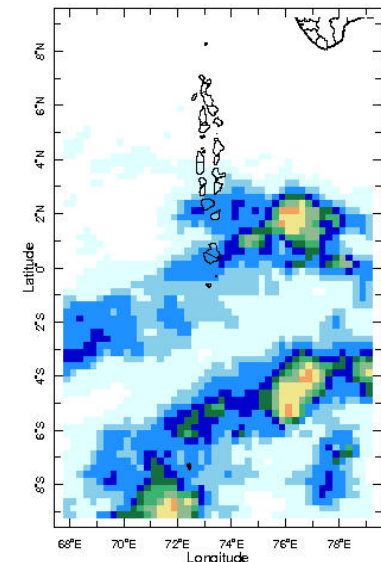
22 Dec 2024



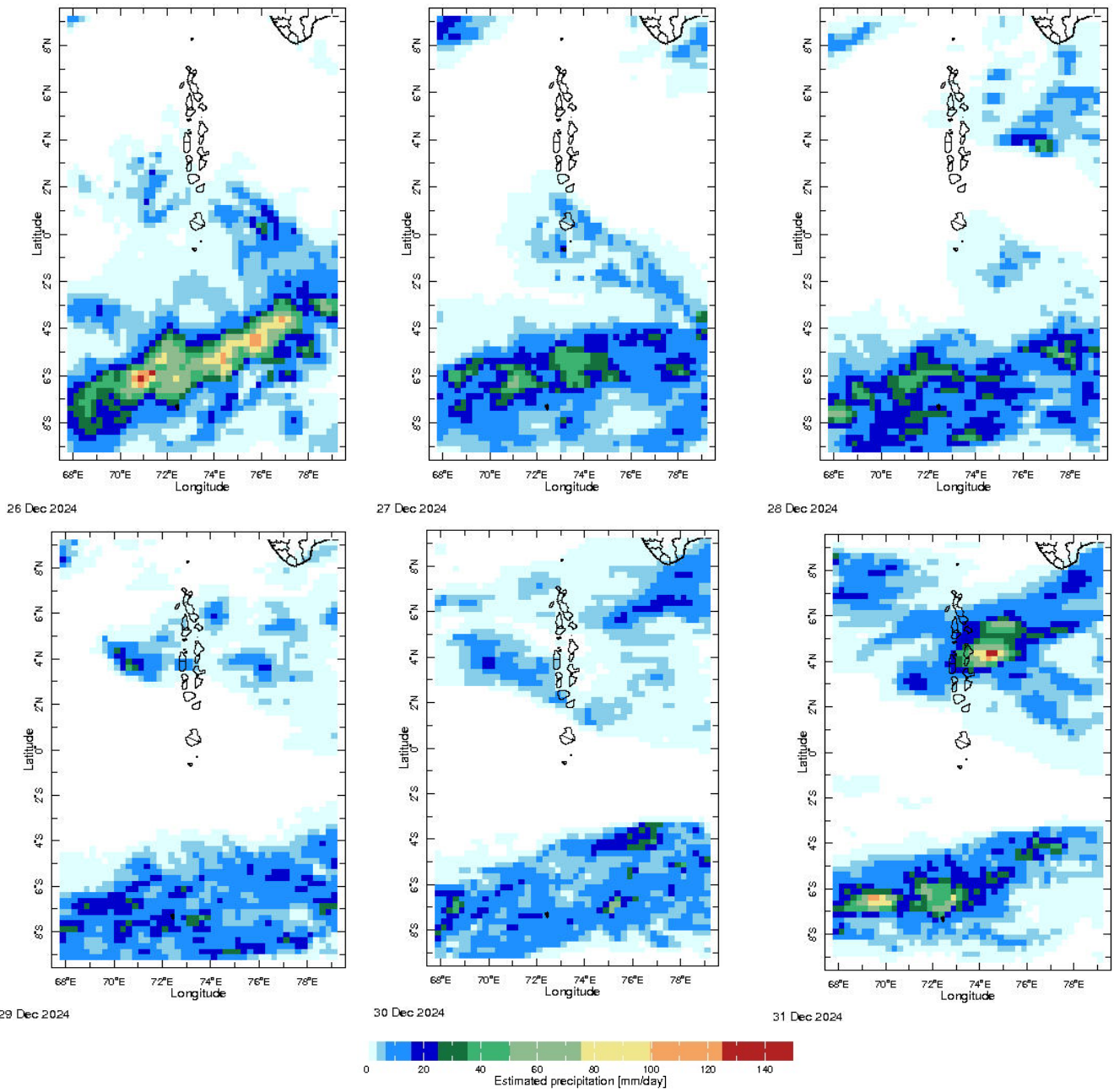
23 Dec 2024



24 Dec 2024

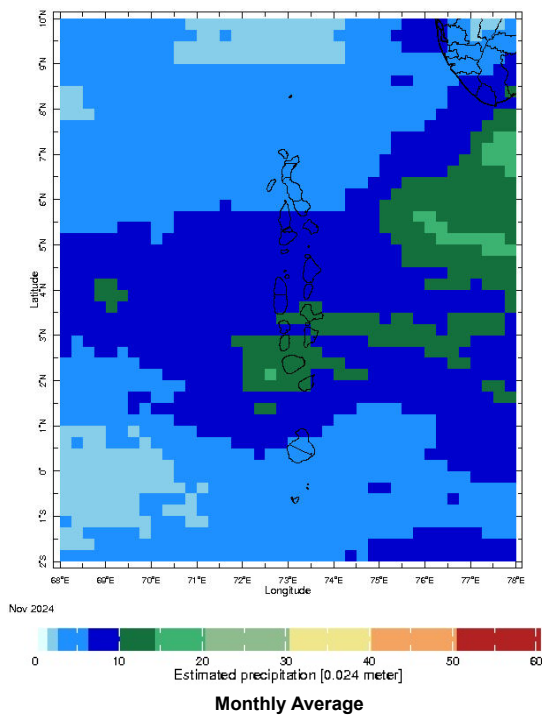


25 Dec 2024



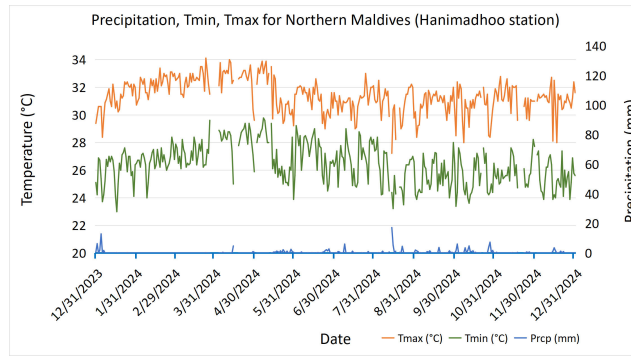
Monthly Rainfall Monitoring

The figure shows the average observed rainfall in the previous month.



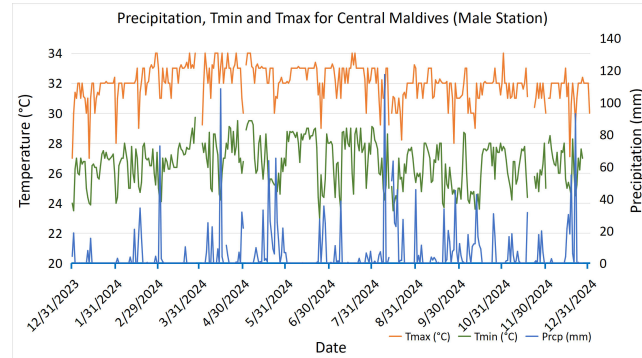
Monthly and Seasonal Monitoring

Northern Maldives:



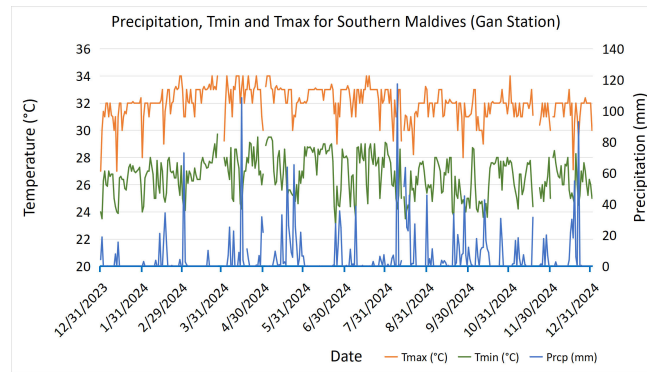
Daily Rainfall, Tmin & Tmax for the previous year in Hanimadhoo station (2023 Dec to 2024 Dec)

Central Maldives:



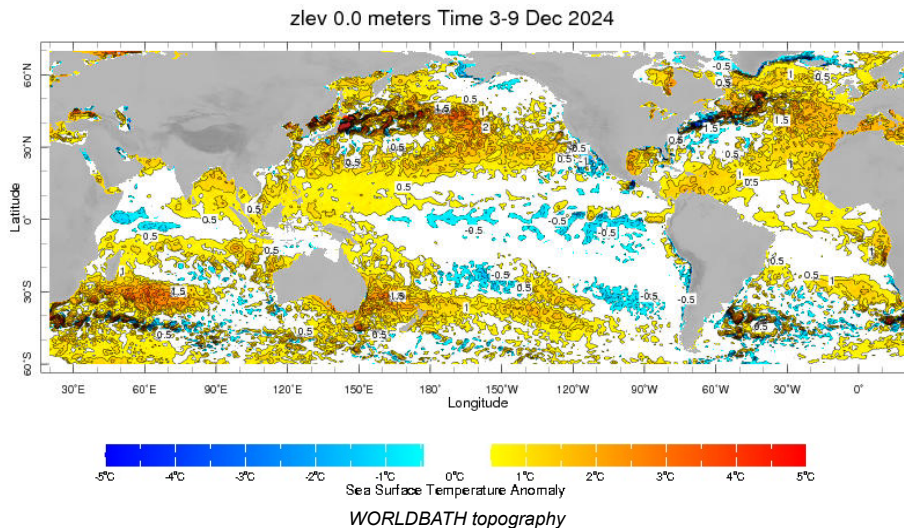
Daily Rainfall, Tmin & Tmax for the previous year in Male station (2023 Dec to 2024 Dec)

Southern Maldives:

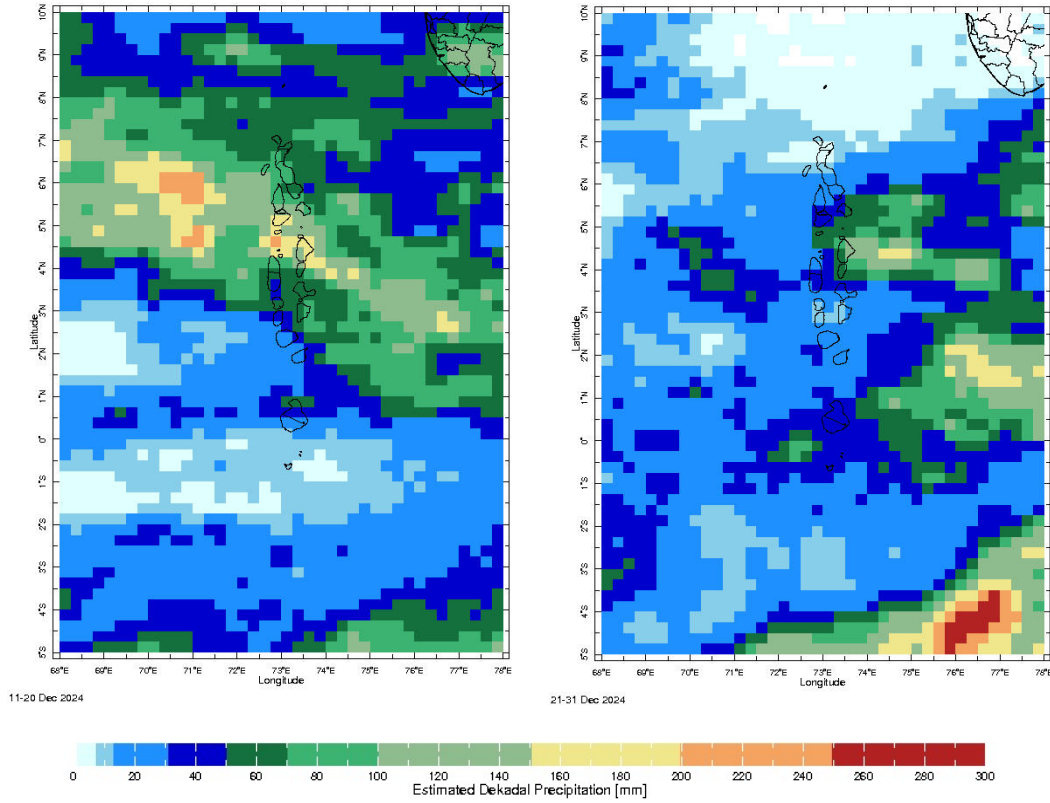


Daily Rainfall, Tmin & Tmax for the previous year in Gan station (2023 Dec to 2024 Dec)

Ocean Surface Monitoring

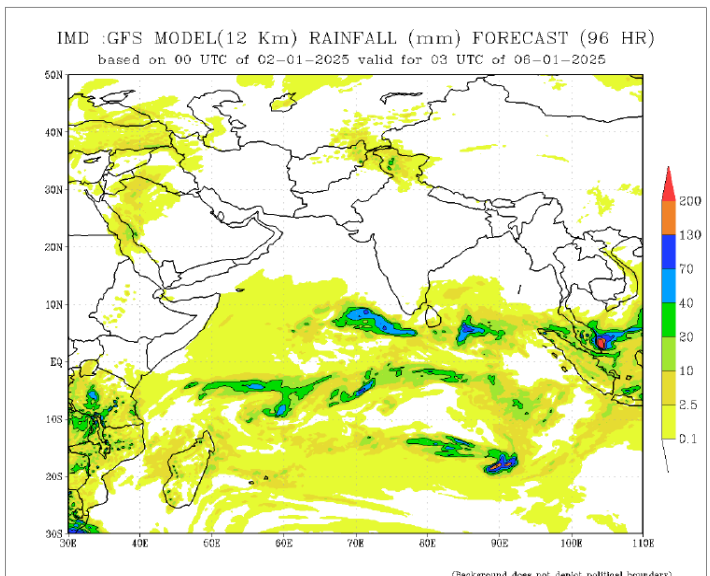
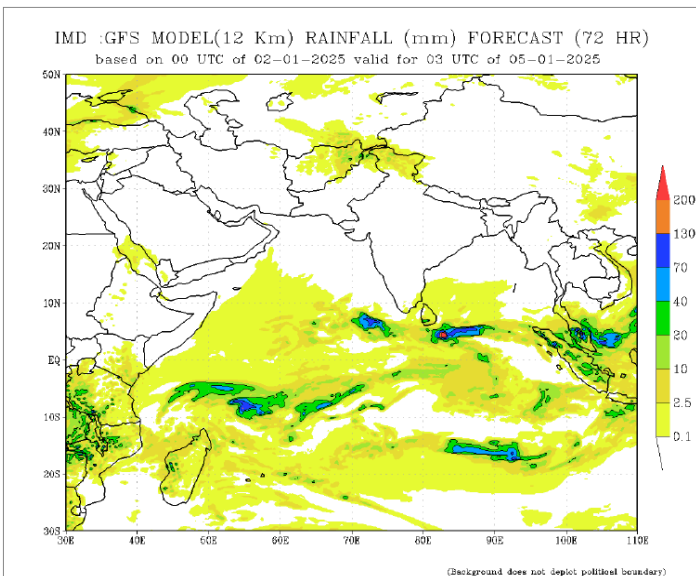
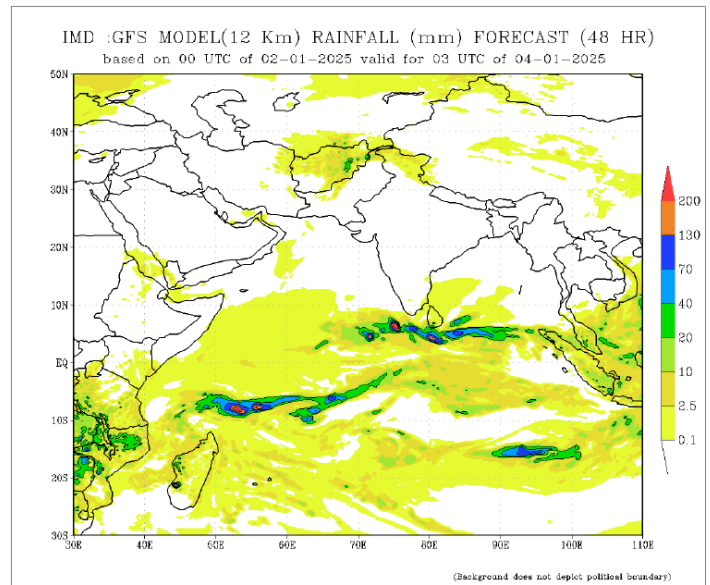
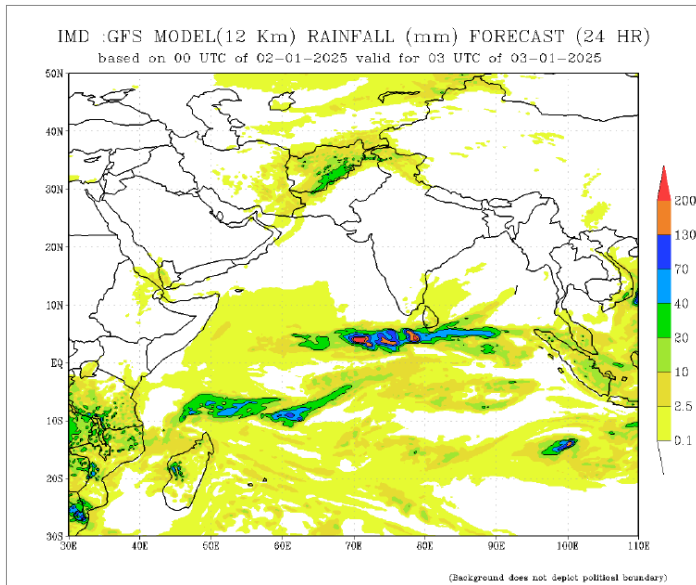


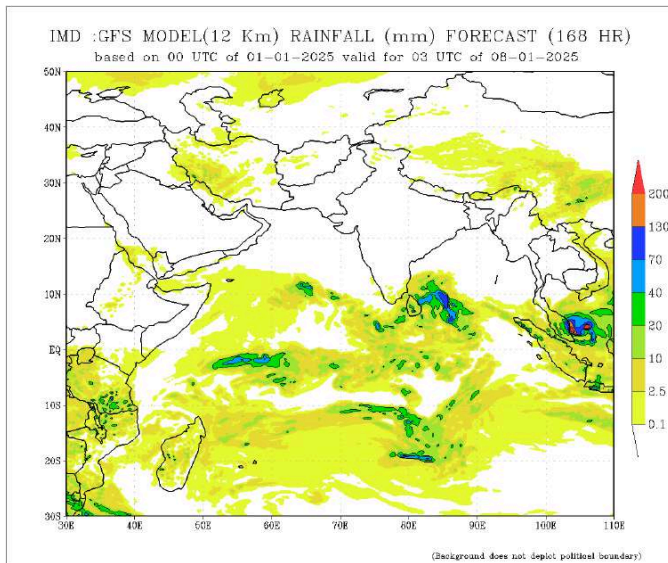
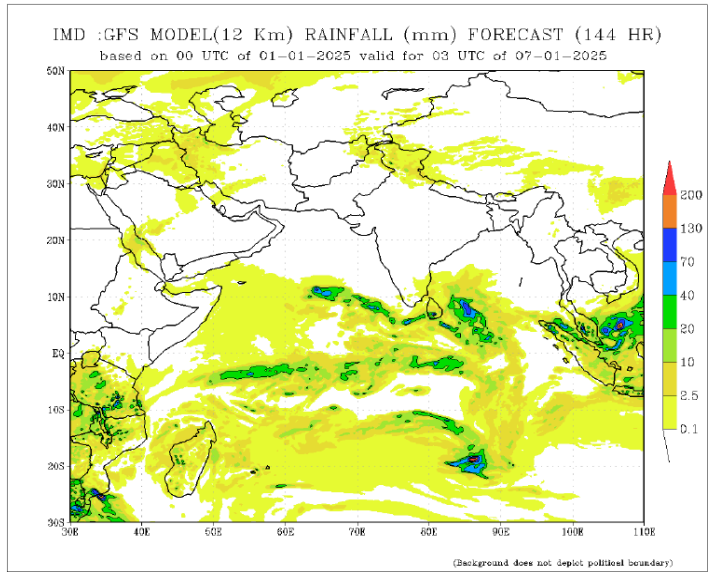
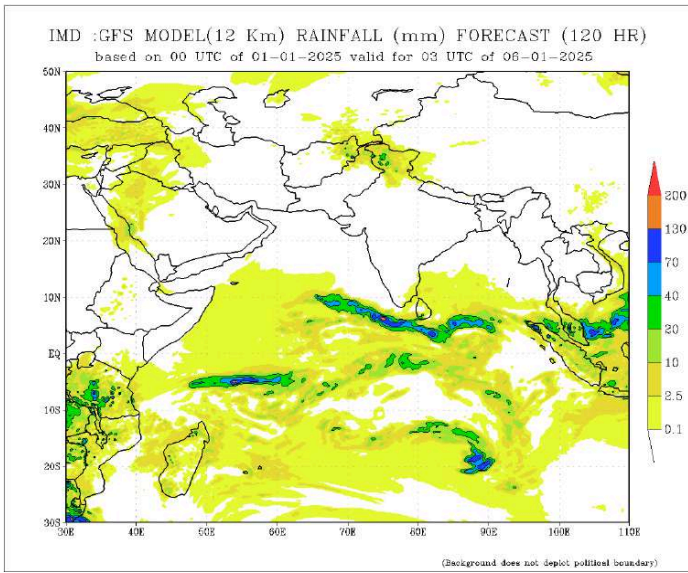
Dekadal (10 Day) Satellite Derived Rainfall Estimates



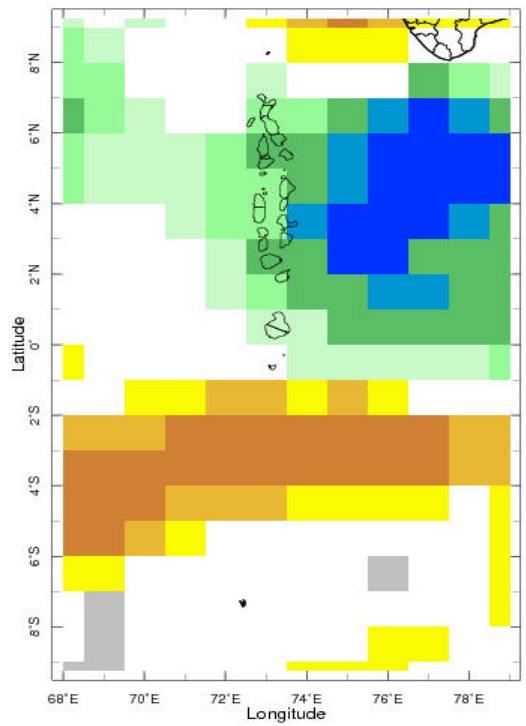
Daily Rainfall Forecast

Daily Rainfall forecasts (up to 7 days ahead) from the IMD is provided in figures below. These predictions are from the GFS (T1534) model covering the entire south Asian region.





Weekly Precipitation Forecast



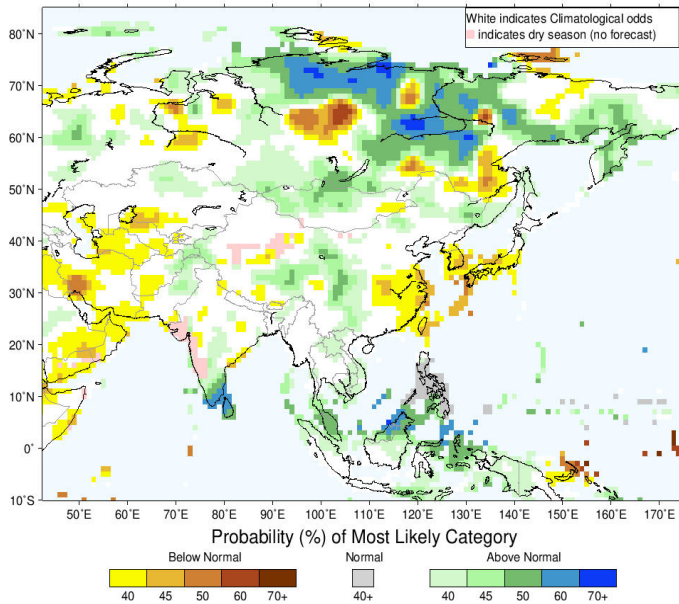
4-17 Jan 2025 IRI SubX Precipitation Forecast issued 0000 27 Dec 2



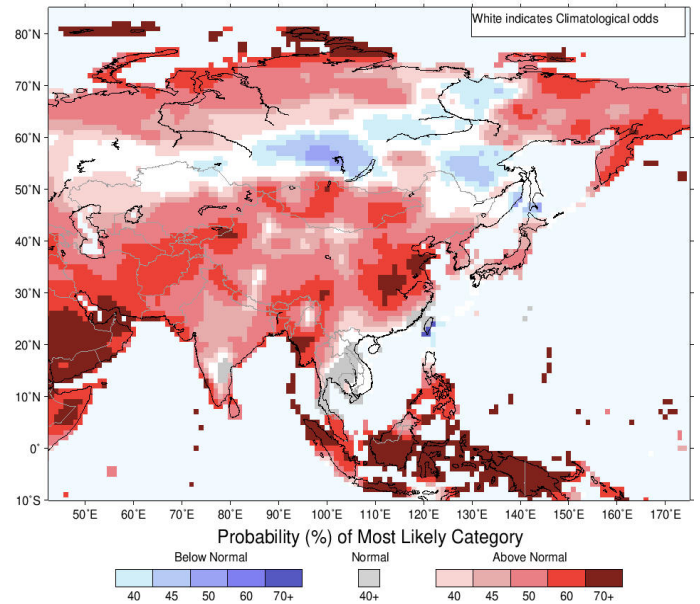
Seasonal Rainfall and Temperature Forecast

Following is the latest seasonal precipitation and temperature prediction for the next 3 months by the IRI. The color shading indicates the probability of the most dominant tercile -- that is, the tercile having the highest forecast probability. The color bar alongside the map defines these dominant tercile probability levels. The upper side of the color bar shows the colors used for increasingly strong probabilities when the dominant tercile is the above-normal tercile, while the lower side shows likewise for the below-normal tercile. The gray color indicates an enhanced probability for the near-normal tercile (nearly always limited to 40%).

IRI Multi-Model Probability Forecast for Precipitation for January-February-March 2025, Issued December 2024



IRI Multi-Model Probability Forecast for Temperature for January-February-March 2025, Issued December 2024



Subscribe to our Monthly Maldives Newsletter

Subscribe

Follow @fectmv

Contact Us
 email: fectmv@gmail.com
 phone: (+96) 07 788010
 blog: www.lectmv.blogspot.com
 website: www.climate.mv

Foundation for Environment, Climate & Technology,
 REM, Madhrasaadhoshuge,
 Henveiru, Hadheebee Magu,
 Male', 20184,
 Maldives