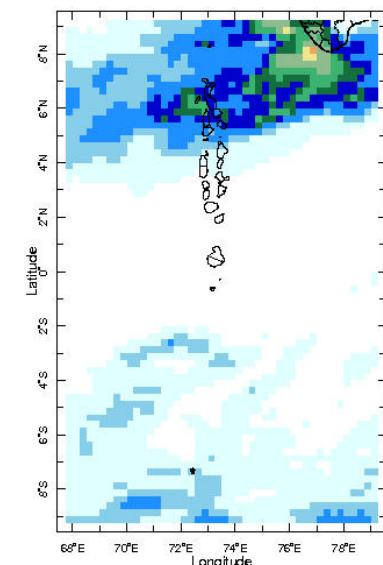
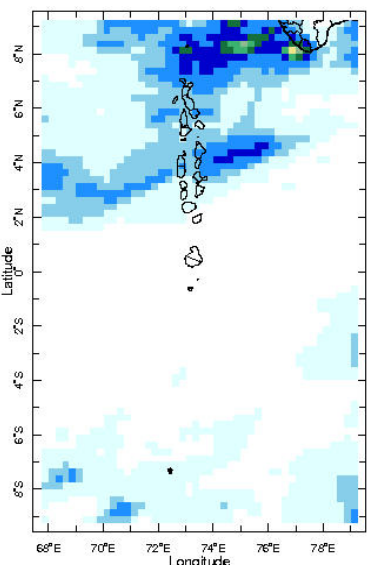
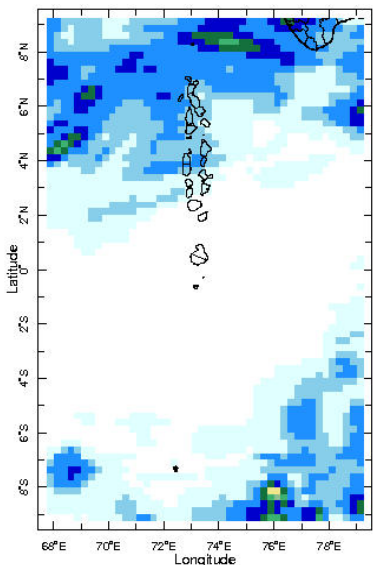
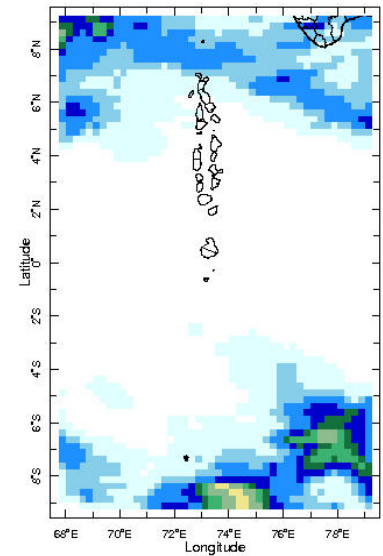
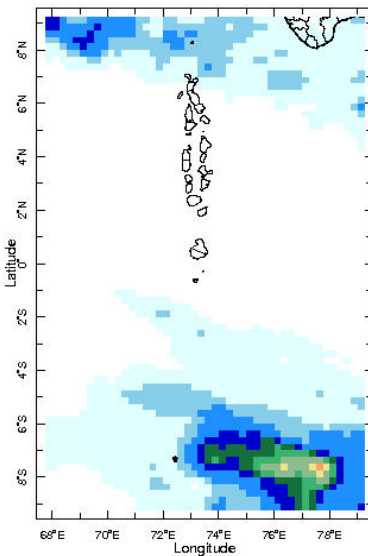
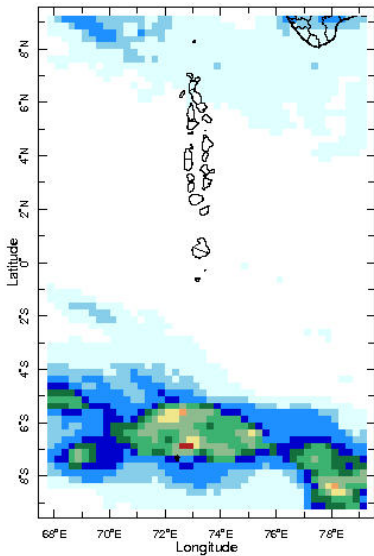
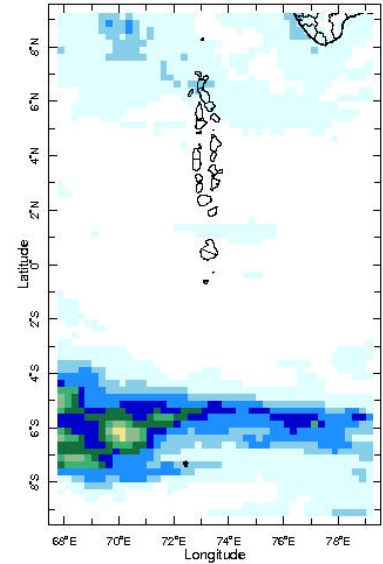
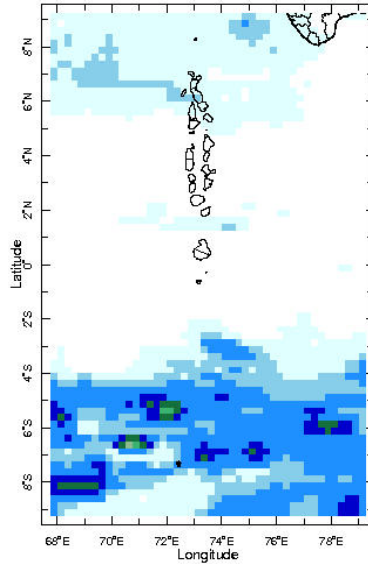
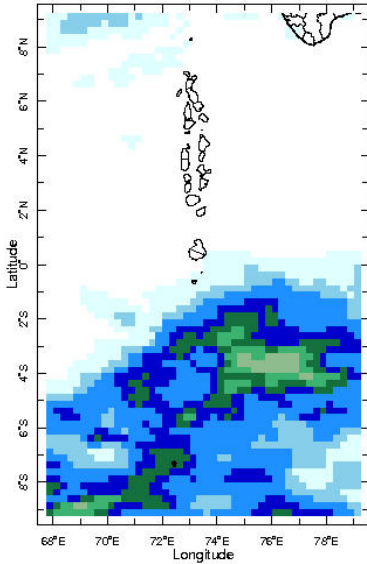
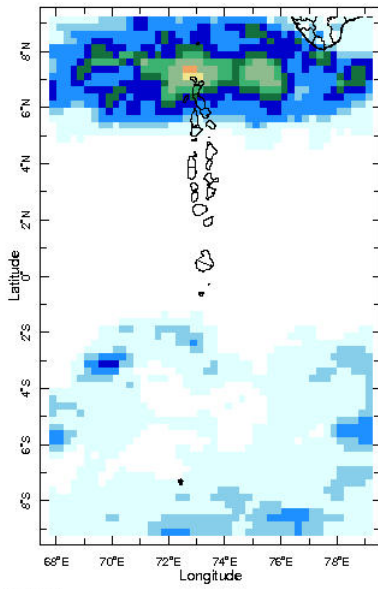




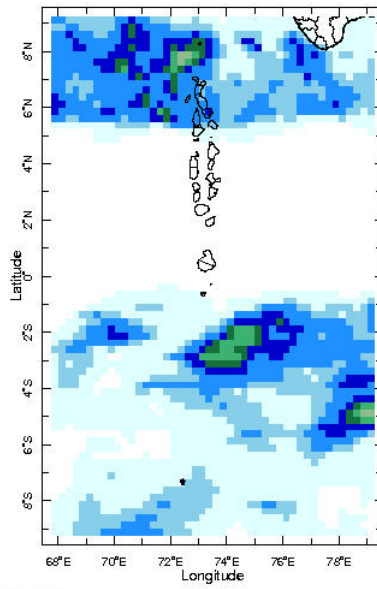
Daily Rainfall Monitoring

The following figures show the observed rainfall in the last 15 days in Maldives.

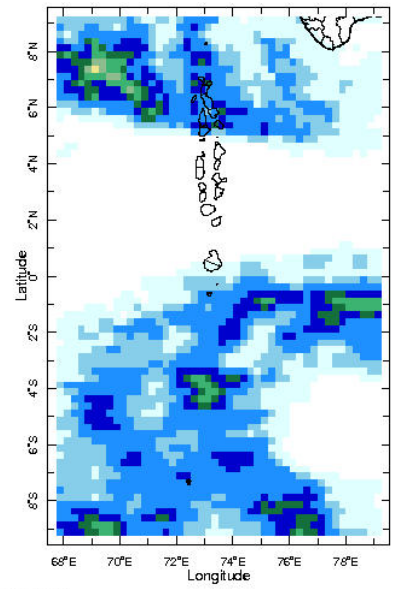




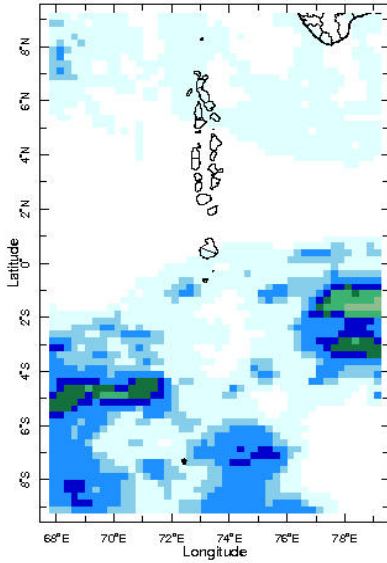
26 Oct 2024



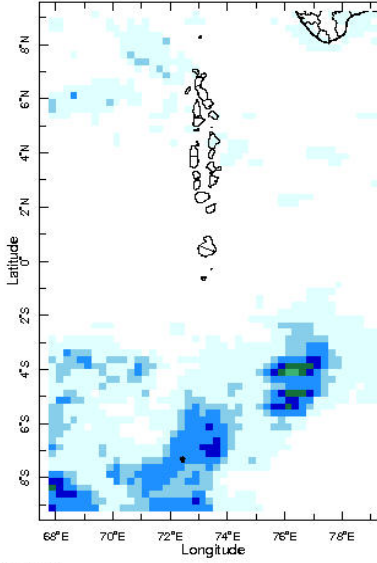
27 Oct 2024



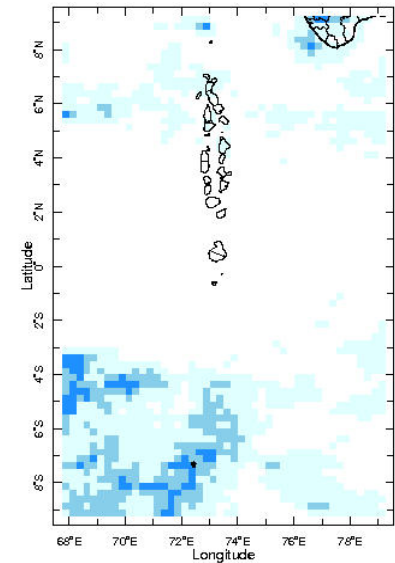
28 Oct 2024



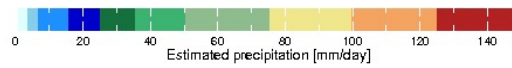
29 Oct 2024



30 Oct 2024

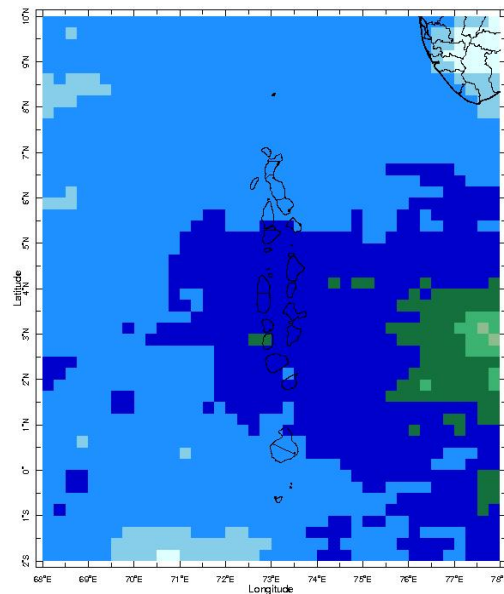


31 Oct 2024

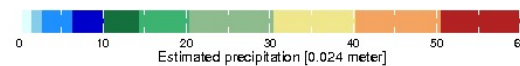


Monthly Rainfall Monitoring

The figure shows the average observed rainfall in the previous month.



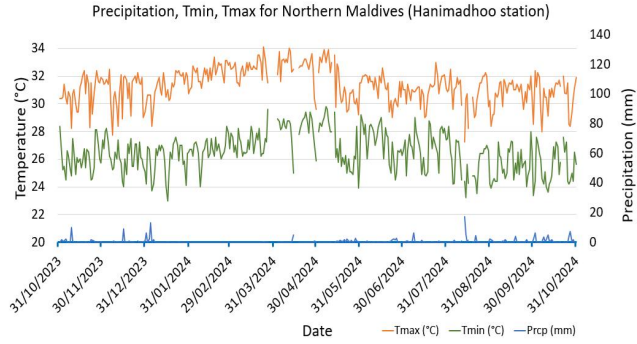
Sep 2024



Monthly Average

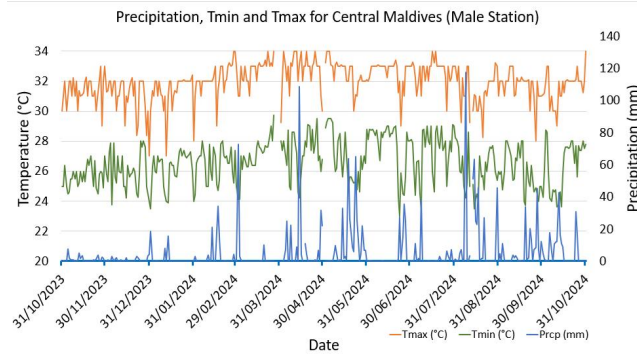
Monthly and Seasonal Monitoring

Northern Maldives:



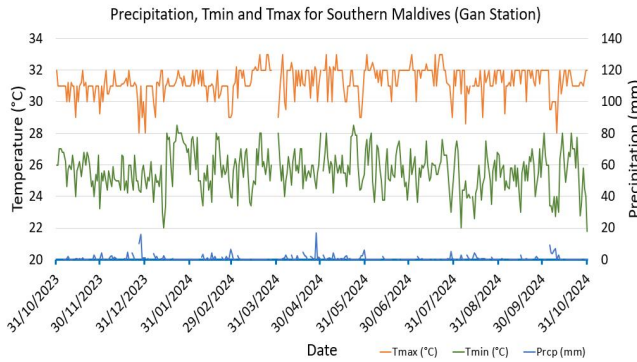
Daily Rainfall, Tmin & Tmax for the previous year in Hanimadhoo station (2023 Oct to 2024 Oct)

Central Maldives:



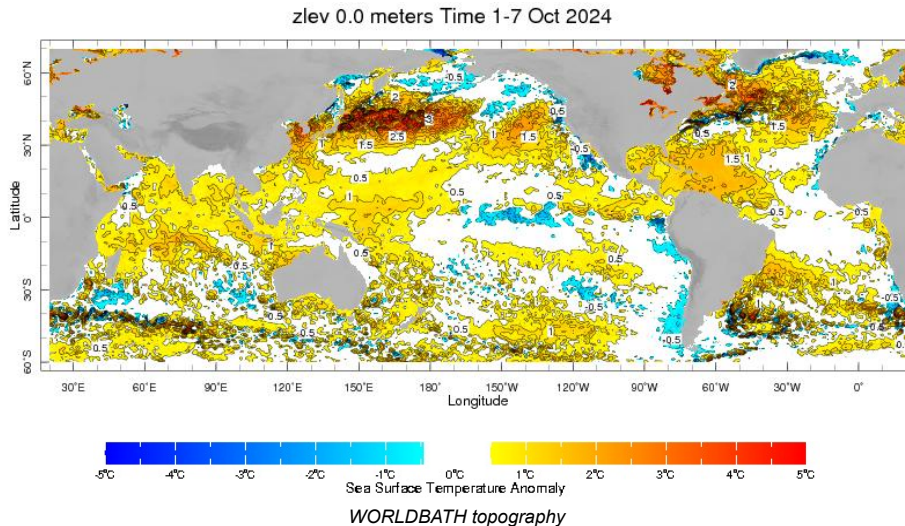
Daily Rainfall, Tmin & Tmax for the previous year in Male station (2023 Oct to 2024 Oct)

Southern Maldives:

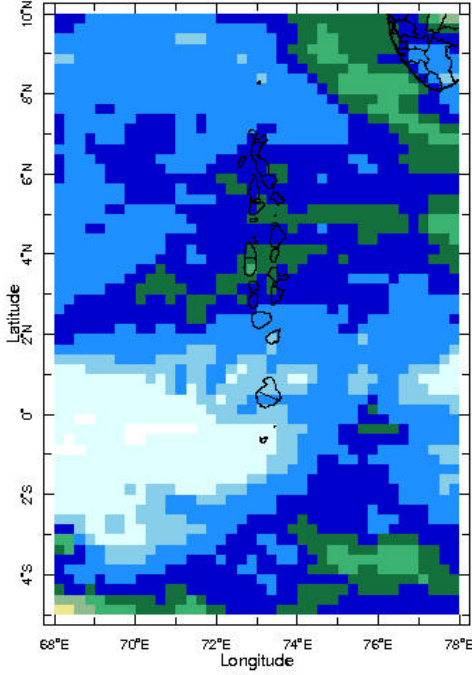


Daily Rainfall, Tmin & Tmax for the previous year in Gan station (2023 Oct to 2024 Oct)

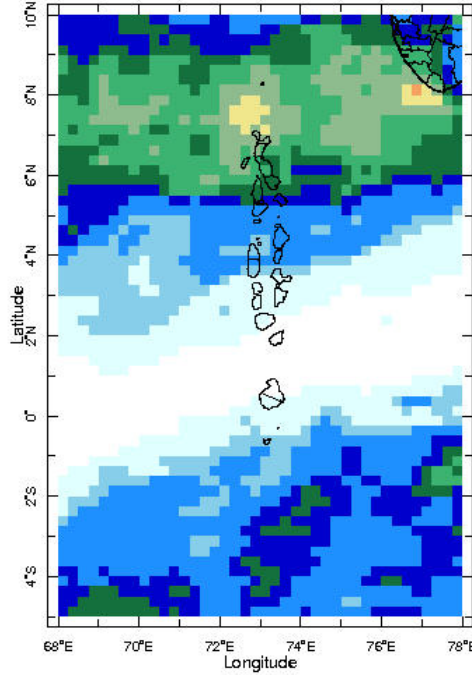
Ocean Surface Monitoring



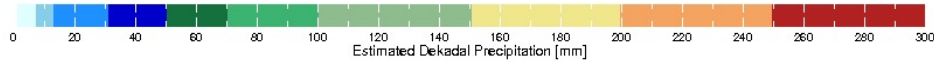
Dekadal (10 Day) Satellite Derived Rainfall Estimates



11-20 Oct 2024

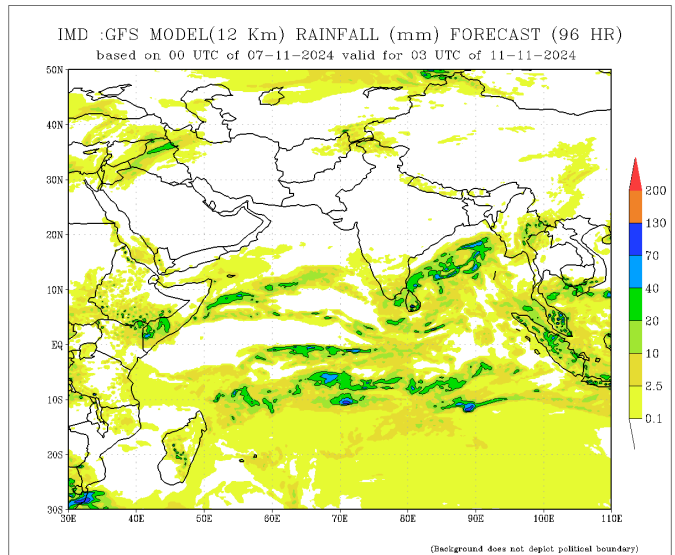
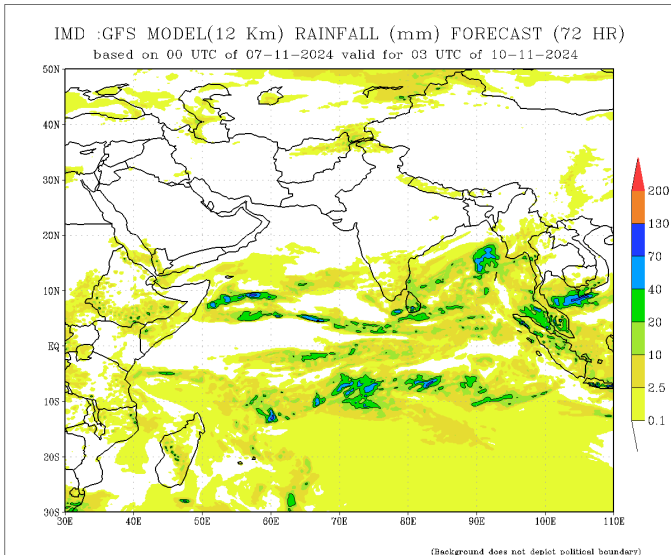
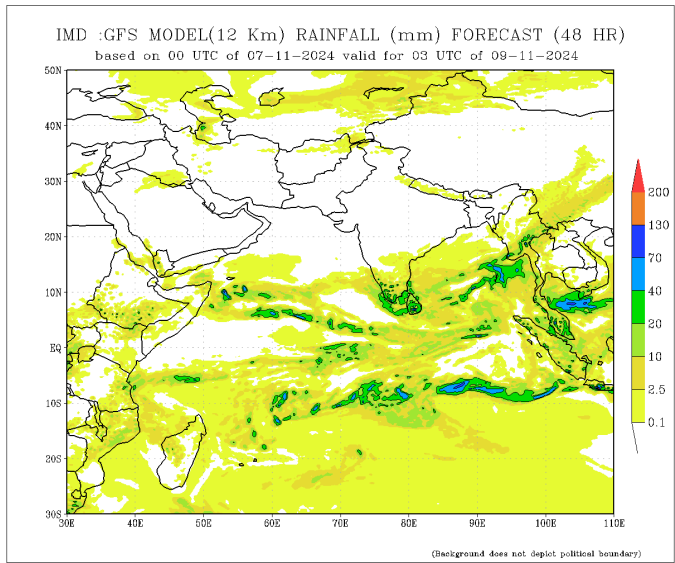
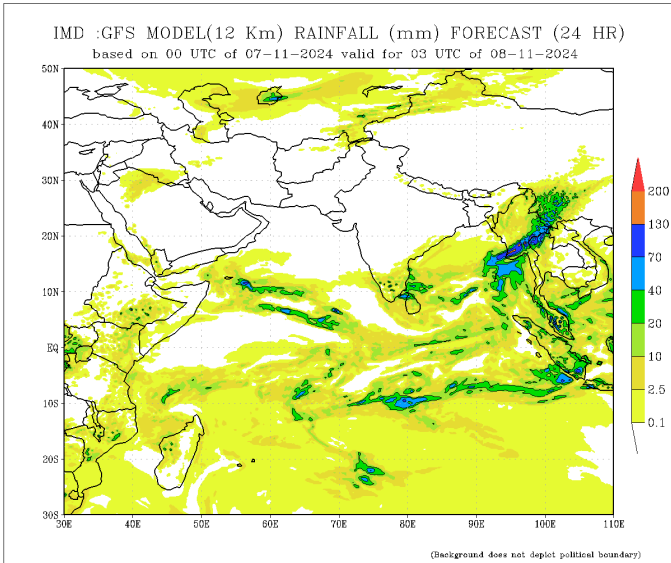


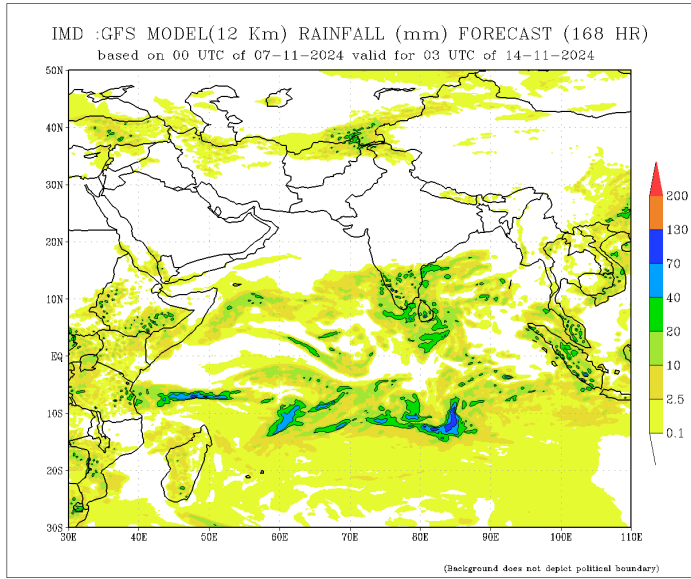
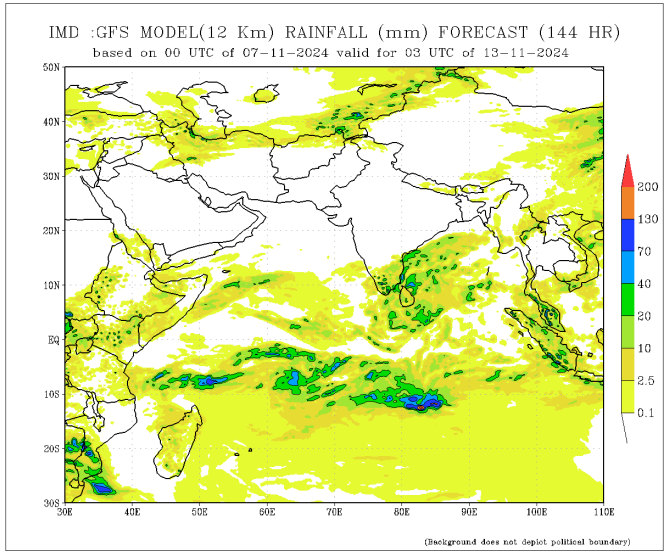
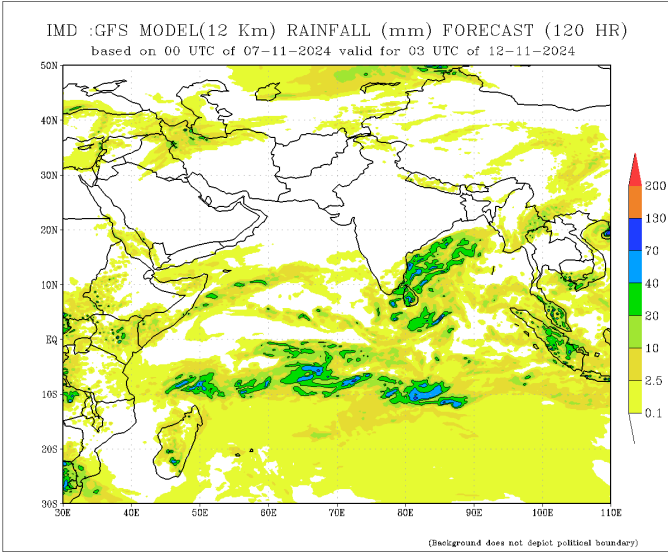
21-31 Oct 2024



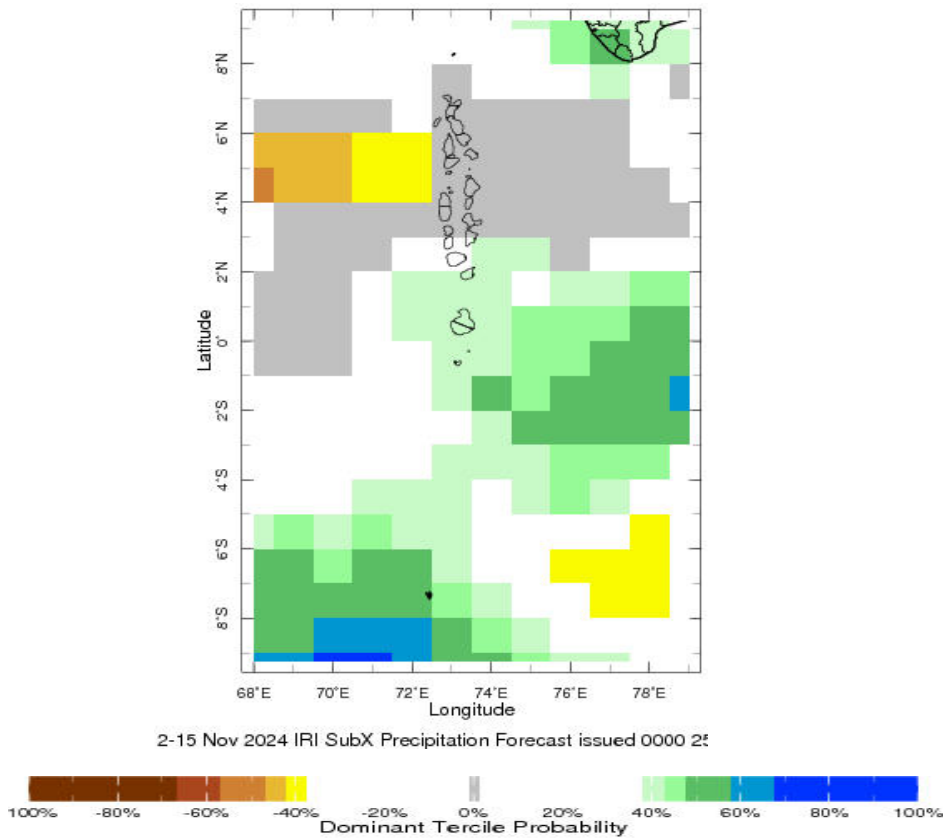
Daily Rainfall Forecast

Daily Rainfall forecasts (up to 7 days ahead) from the IMD is provided in figures below. These predictions are from the GFS (T1534) model covering the entire south Asian region.





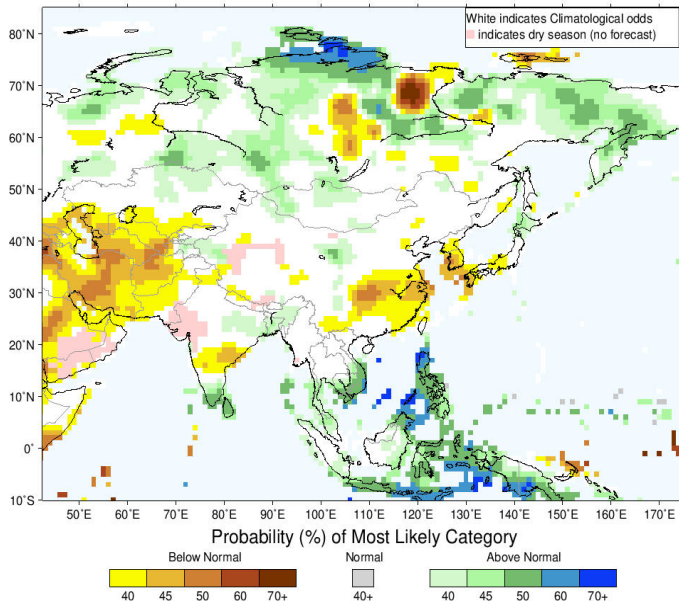
Weekly Precipitation Forecast



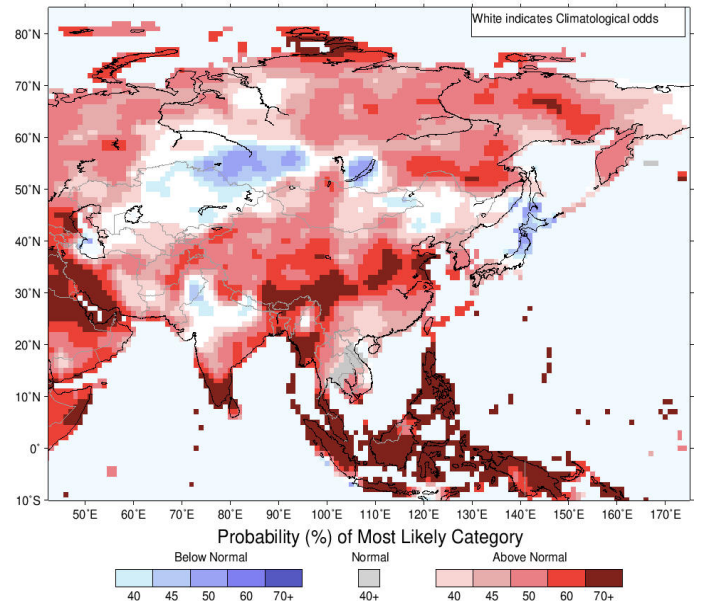
Seasonal Rainfall and Temperature Forecast

Following is the latest seasonal precipitation and temperature prediction for the next 3 months by the IRI. The color shading indicates the probability of the most dominant tercile -- that is, the tercile having the highest forecast probability. The color bar alongside the map defines these dominant tercile probability levels. The upper side of the color bar shows the colors used for increasingly strong probabilities when the dominant tercile is the above-normal tercile, while the lower side shows likewise for the below-normal tercile. The gray color indicates an enhanced probability for the near-normal tercile (nearly always limited to 40%).

IRI Multi-Model Probability Forecast for Precipitation for November-December-January 2025, Issued October 2024



IRI Multi-Model Probability Forecast for Temperature for November-December-January 2025, Issued October 2024



Subscribe to our Monthly Maldives Newsletter

Subscribe

Follow @fectmv

Contact Us
 email: fectmv@gmail.com
 phone: (+96) 07 788010
 blog: www.lectmv.blogspot.com
 website: www.climate.mv

Foundation for Environment, Climate & Technology,
 REM, Madhrasaadhoshuge,
 Henveiru, Hadheebee Magu,
 Male', 20184,
 Maldives