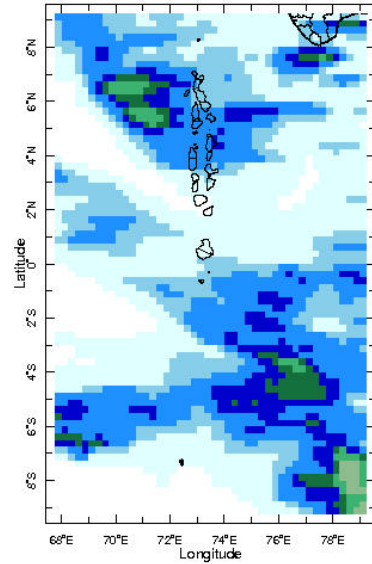


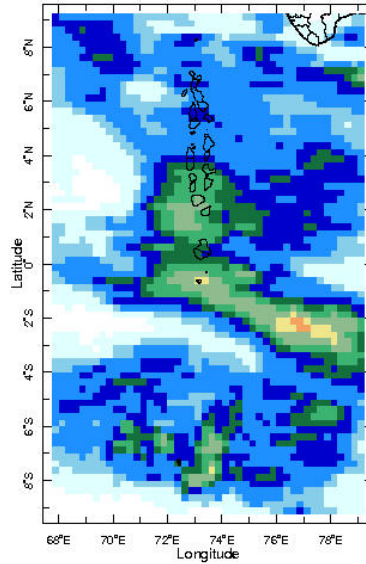


Daily Rainfall Monitoring

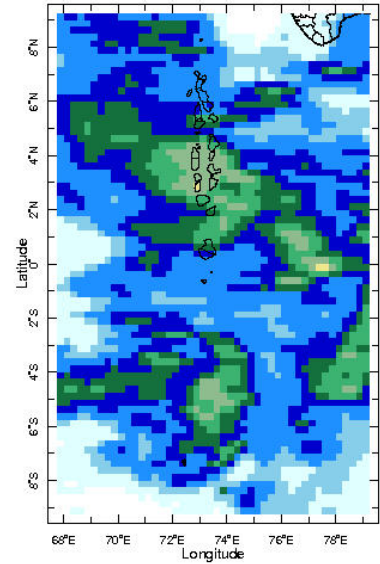
The following figures show the observed rainfall in the last 15 days in Maldives.



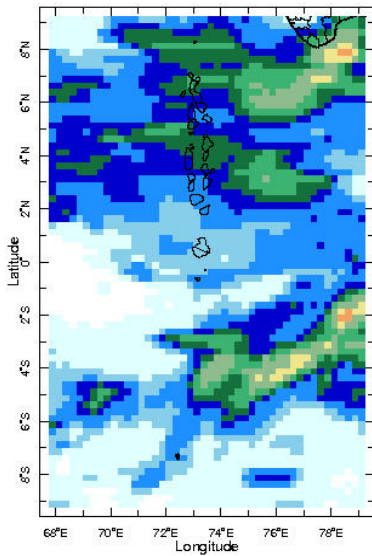
16 Nov 2024



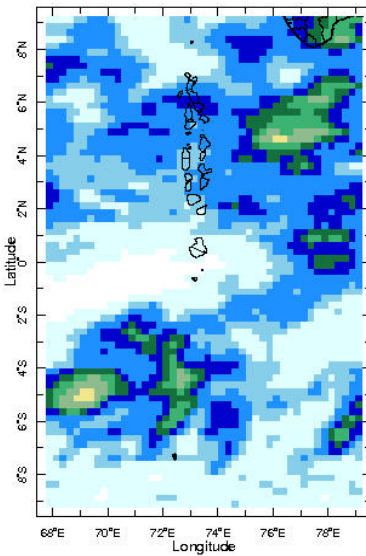
17 Nov 2024



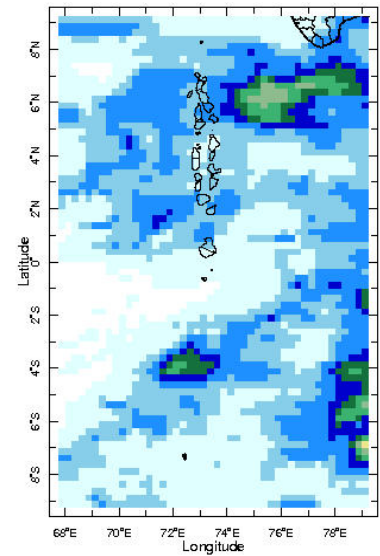
18 Nov 2024



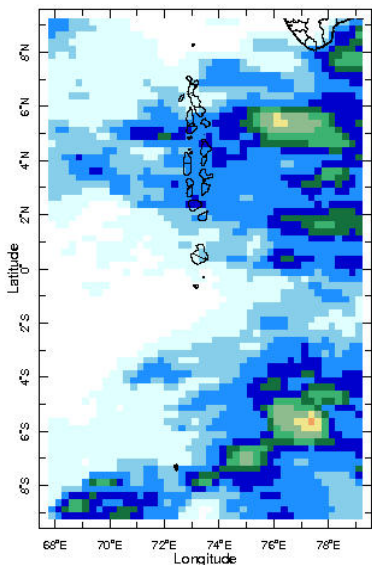
19 Nov 2024



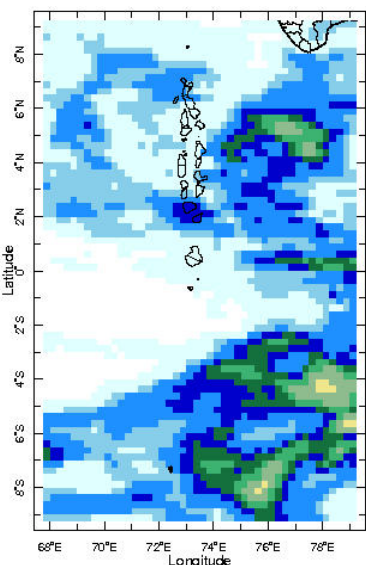
20 Nov 2024



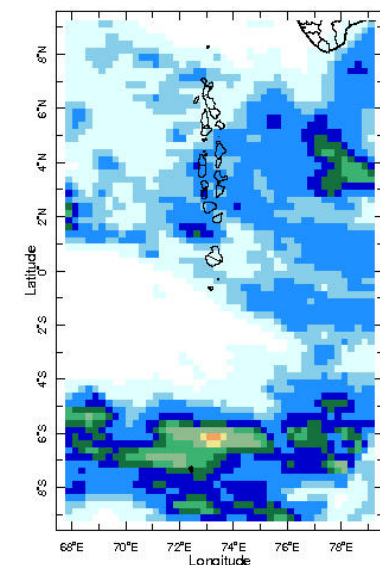
21 Nov 2024



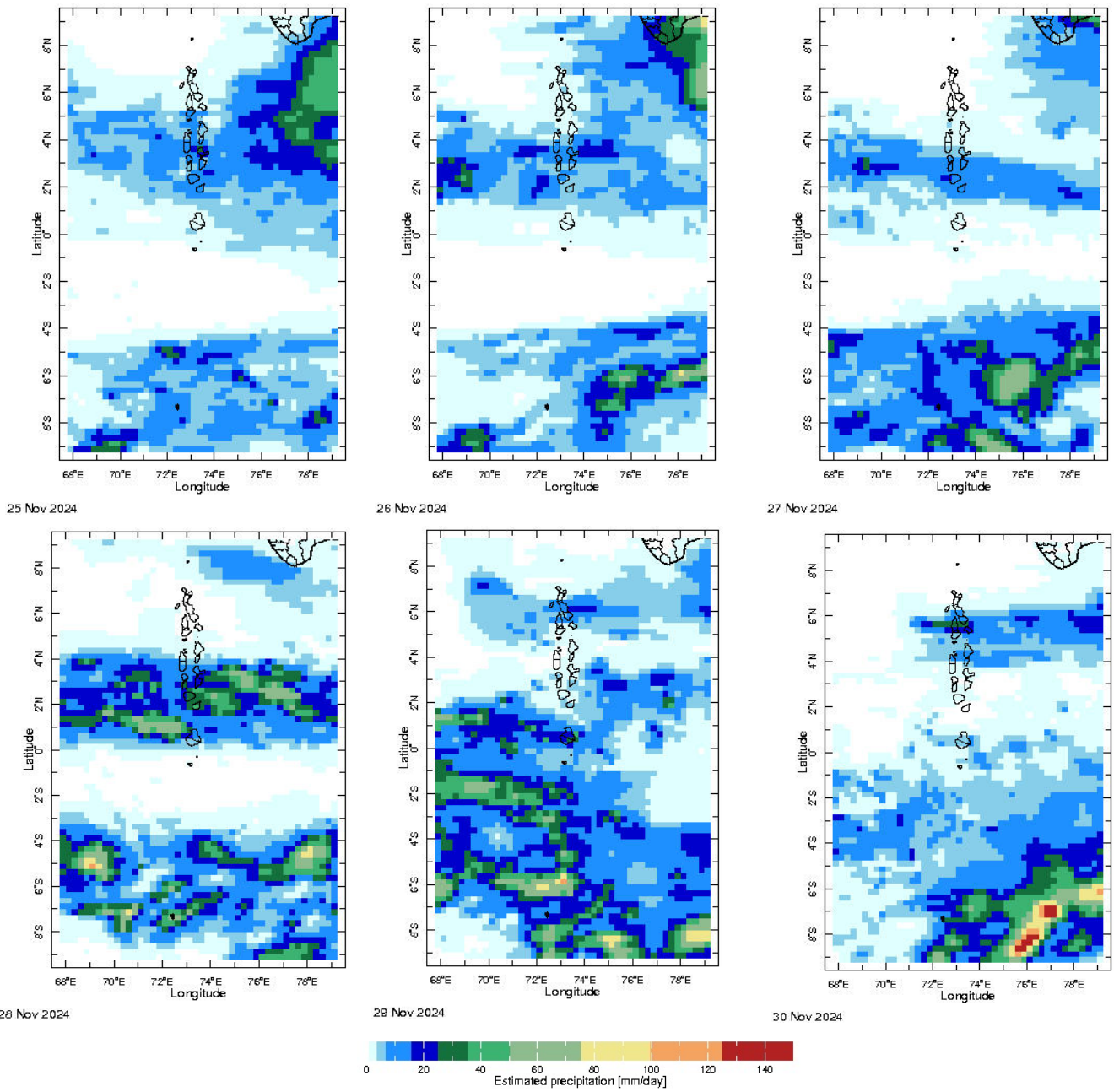
22 Nov 2024



23 Nov 2024

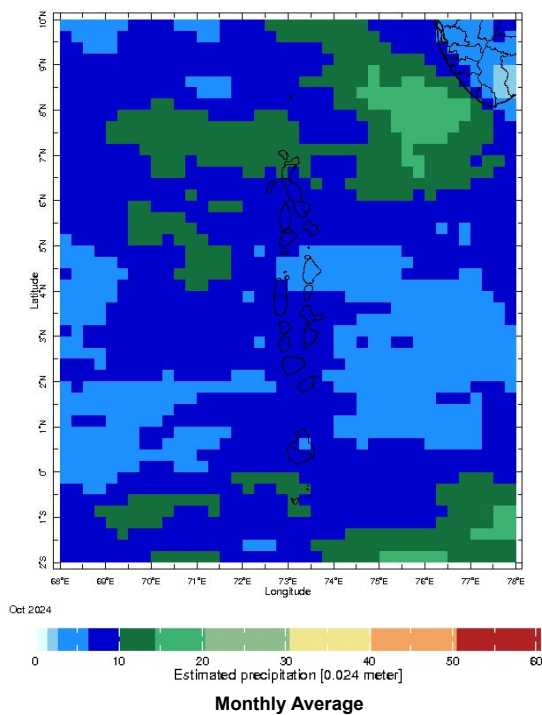


24 Nov 2024



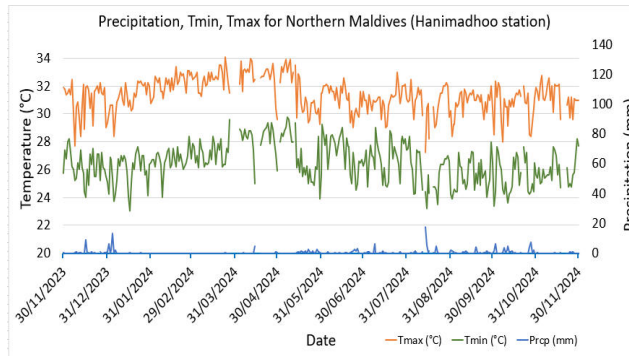
Monthly Rainfall Monitoring

The figure shows the average observed rainfall in the previous month.



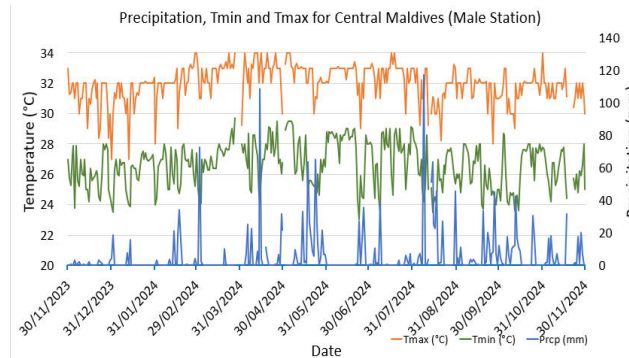
Monthly and Seasonal Monitoring

Northern Maldives:



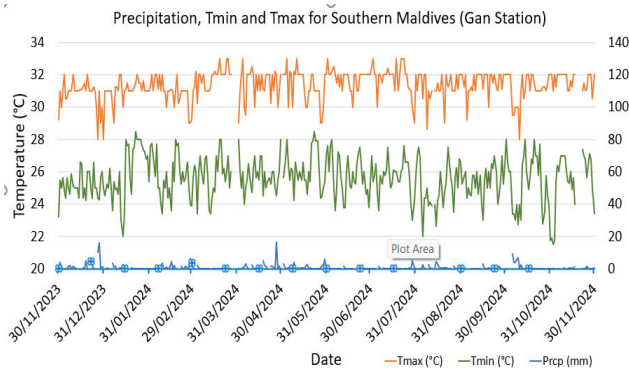
Daily Rainfall, Tmin & Tmax for the previous year in Hanimadhoo station (2023 Nov to 2024 Nov)

Central Maldives:



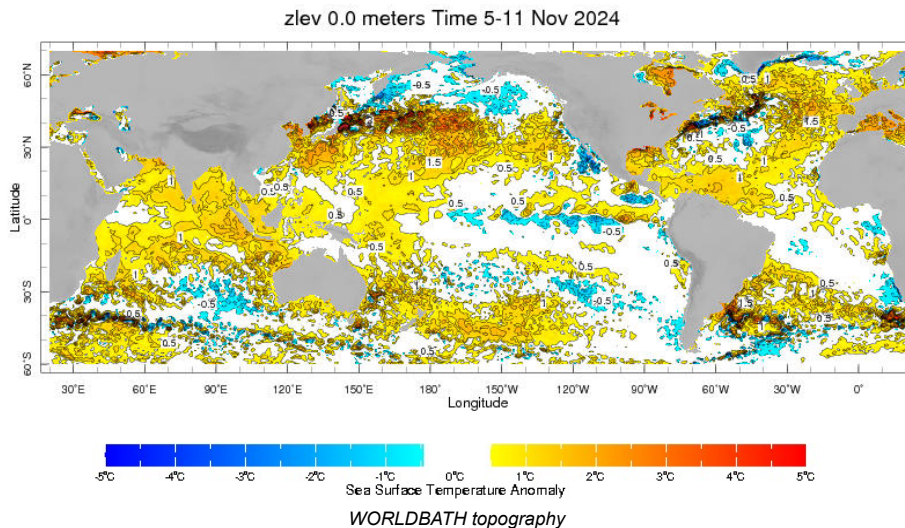
Daily Rainfall, Tmin & Tmax for the previous year in Male station (2023 Nov to 2024 Nov)

Southern Maldives:

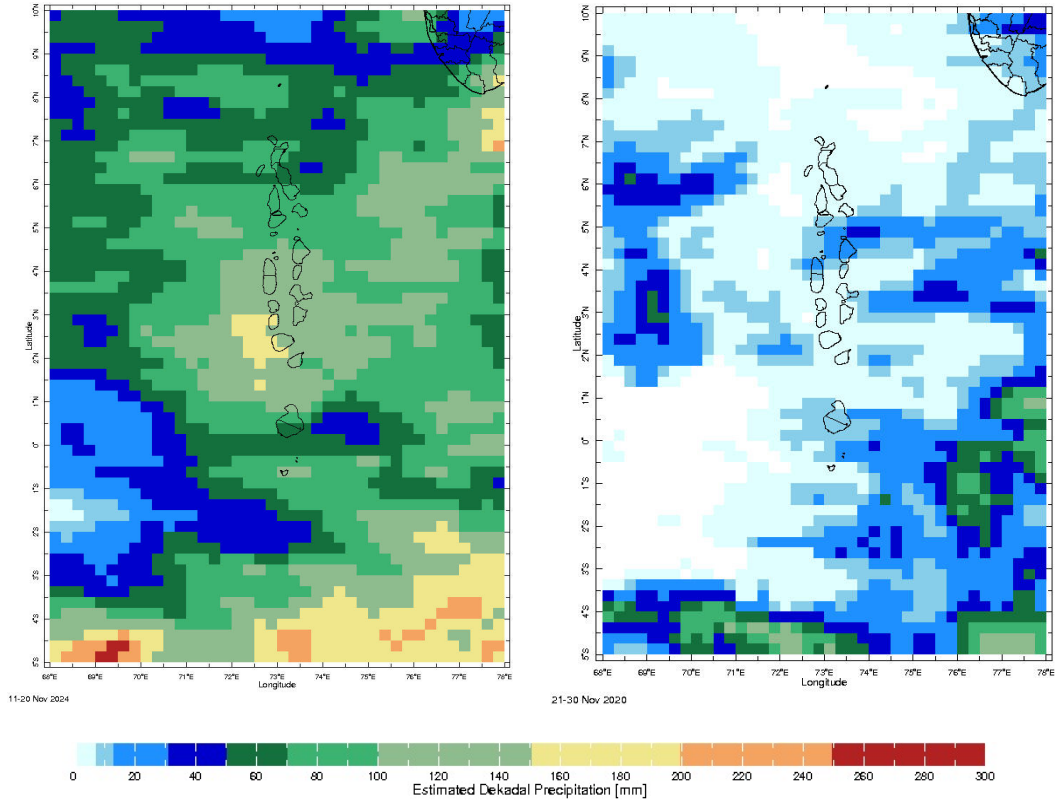


Daily Rainfall, Tmin & Tmax for the previous year in Gan station (2023 Nov to 2024 Nov)

Ocean Surface Monitoring

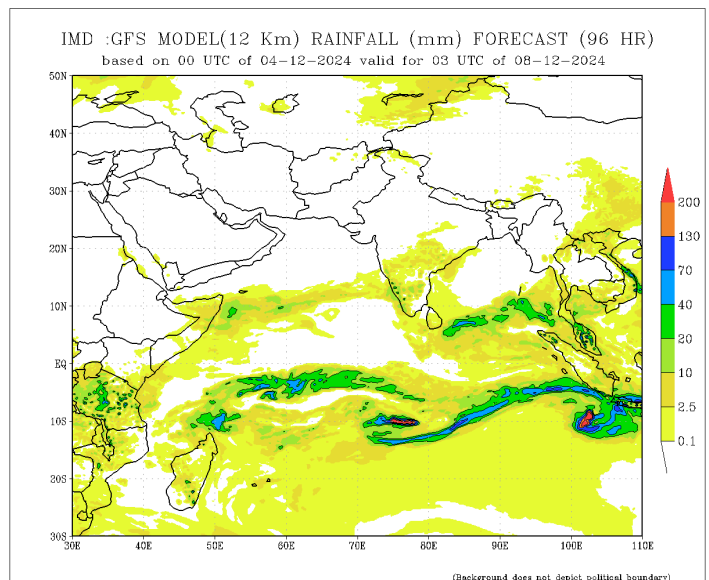
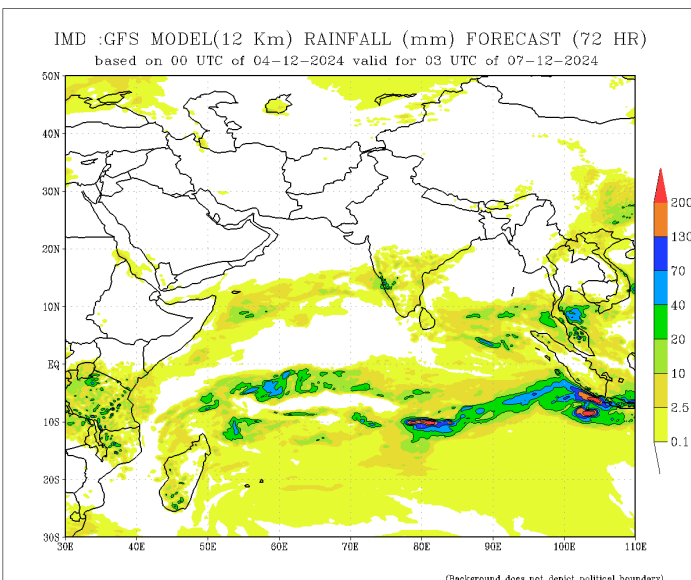
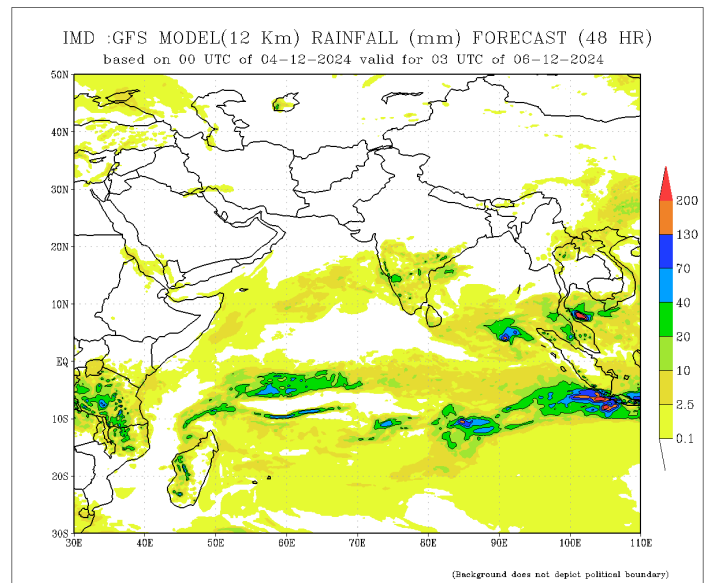
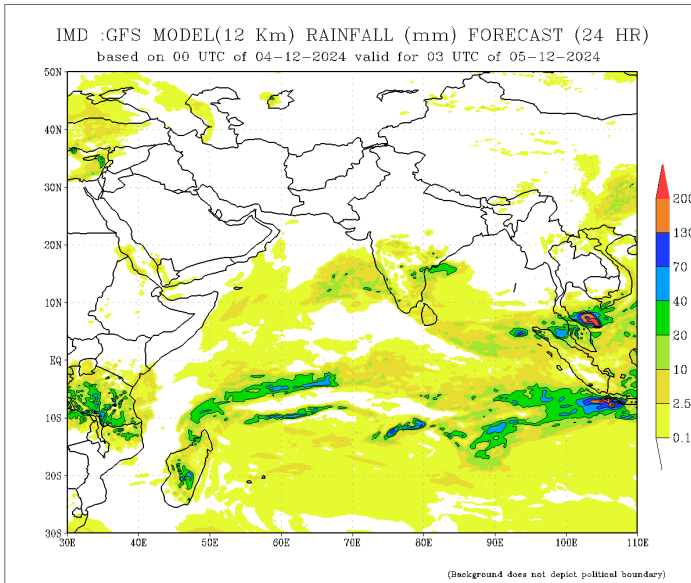


Dekadal (10 Day) Satellite Derived Rainfall Estimates

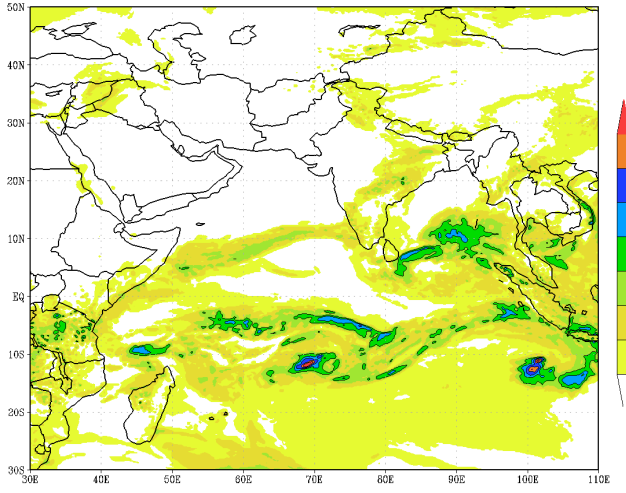


Daily Rainfall Forecast

Daily Rainfall forecasts (up to 7 days ahead) from the IMD is provided in figures below. These predictions are from the GFS (T1534) model covering the entire south Asian region.

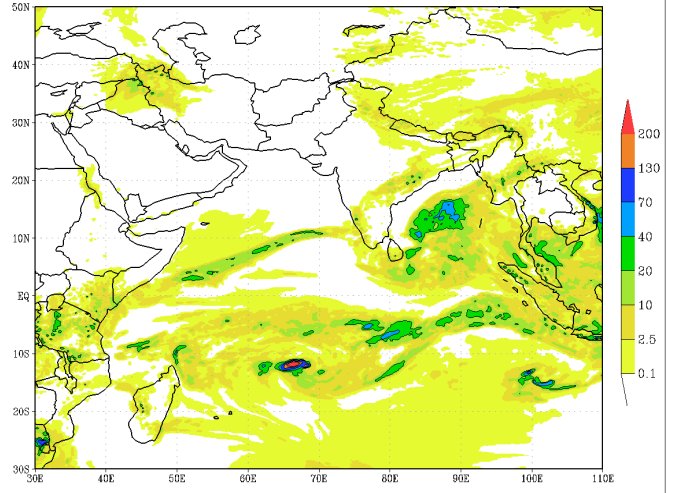


IMD :GFS MODEL(12 Km) RAINFALL (mm) FORECAST (120 HR)
 based on 00 UTC of 04-12-2024 valid for 03 UTC of 09-12-2024



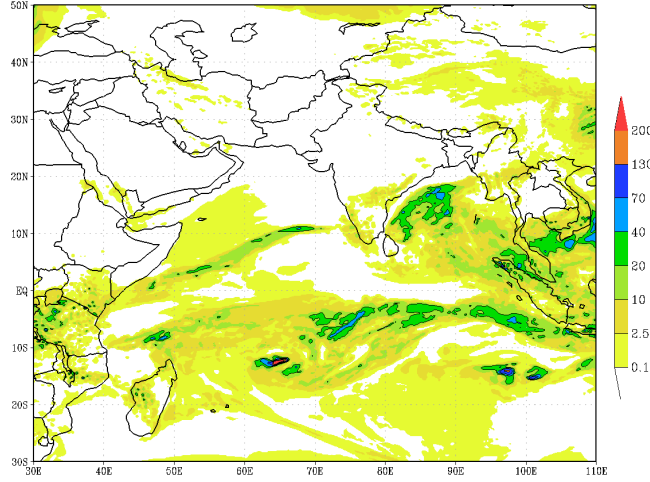
(Background does not depict political boundary)

IMD :GFS MODEL(12 Km) RAINFALL (mm) FORECAST (144 HR)
 based on 00 UTC of 04-12-2024 valid for 03 UTC of 10-12-2024



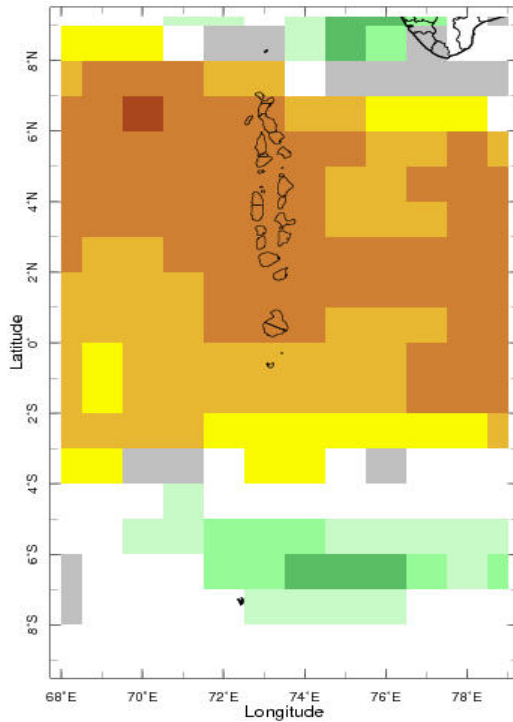
(Background does not depict political boundary)

IMD :GFS MODEL(12 Km) RAINFALL (mm) FORECAST (168 HR)
 based on 00 UTC of 04-12-2024 valid for 03 UTC of 11-12-2024



(Background does not depict political boundary)

Weekly Precipitation Forecast



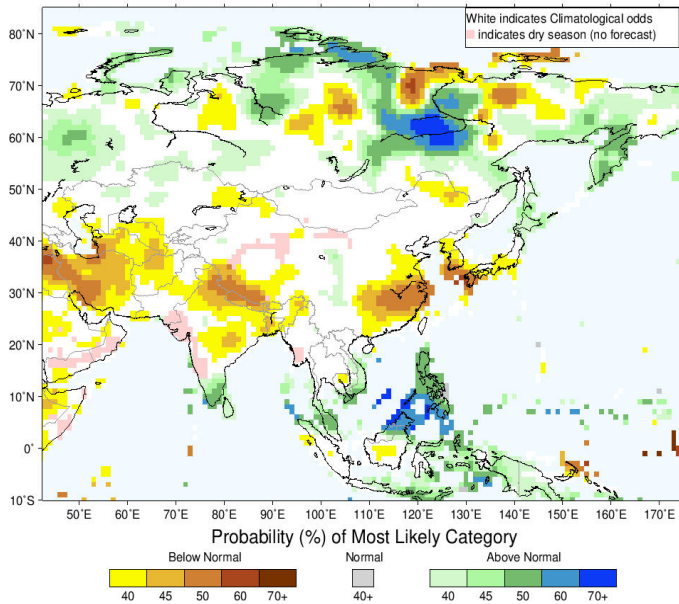
7-20 Dec 2024 IRI SubX Precipitation Forecast issued 0000 29 Nov 2



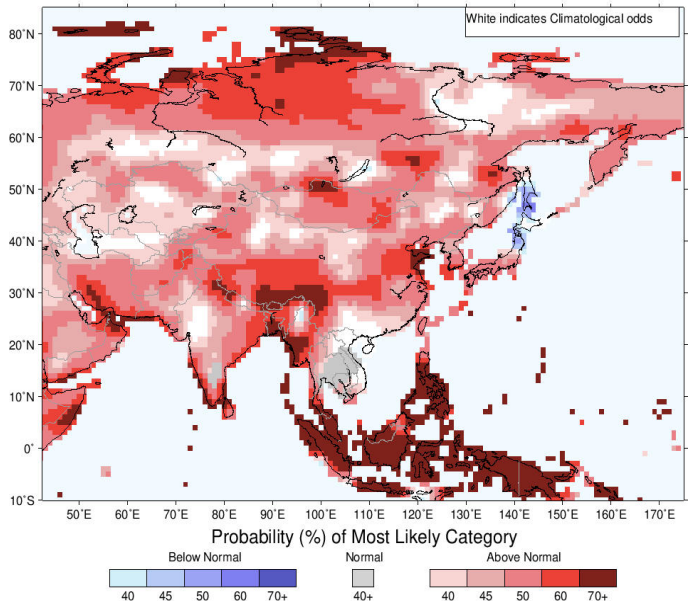
Seasonal Rainfall and Temperature Forecast

Following is the latest seasonal precipitation and temperature prediction for the next 3 months by the IRI. The color shading indicates the probability of the most dominant tercile -- that is, the tercile having the highest forecast probability. The color bar alongside the map defines these dominant tercile probability levels. The upper side of the color bar shows the colors used for increasingly strong probabilities when the dominant tercile is the above-normal tercile, while the lower side shows likewise for the below-normal tercile. The gray color indicates an enhanced probability for the near-normal tercile (nearly always limited to 40%).

IRI Multi-Model Probability Forecast for Precipitation for December–January–February 2025, Issued November 2024



IRI Multi-Model Probability Forecast for Temperature for December–January–February 2025, Issued November 2024



Subscribe to our Monthly Maldives Newsletter

Subscribe

Follow @fectmv

Contact Us
 email: fectmv@gmail.com
 phone: (+96) 07 788010
 blog: www.lectmv.blogspot.com
 website: www.climate.mv

Foundation for Environment, Climate & Technology,
 REM, Madhrasaadhoshuge,
 Henveiru, Hadheebee Magu,
 Male', 20184,
 Maldives