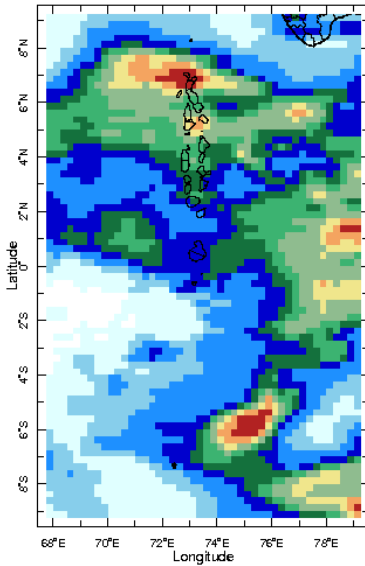


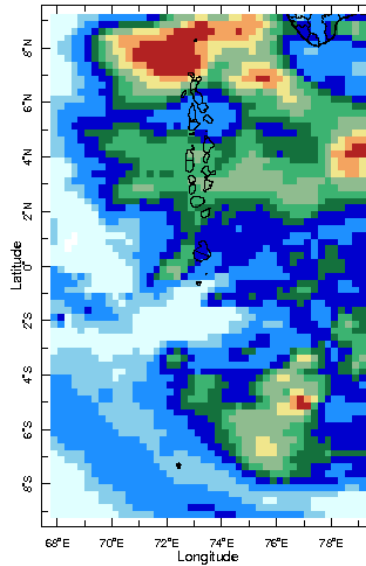


Daily Rainfall Monitoring

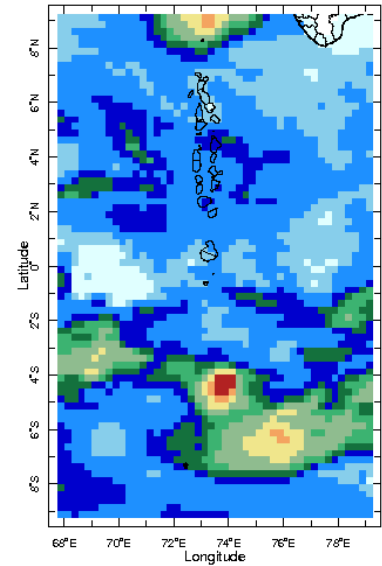
The following figures show the observed rainfall in the last 15 days in Maldives.



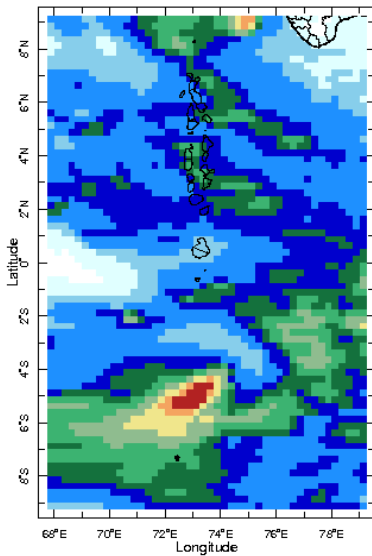
12 Aug 2024



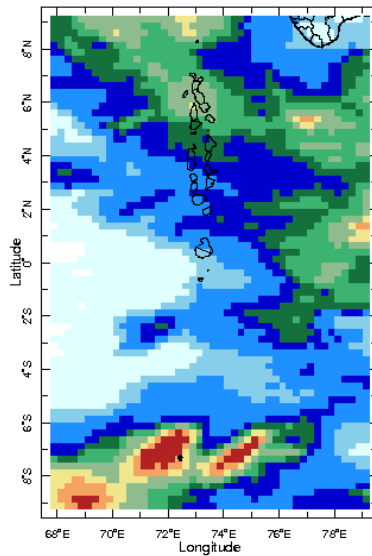
13 Aug 2024



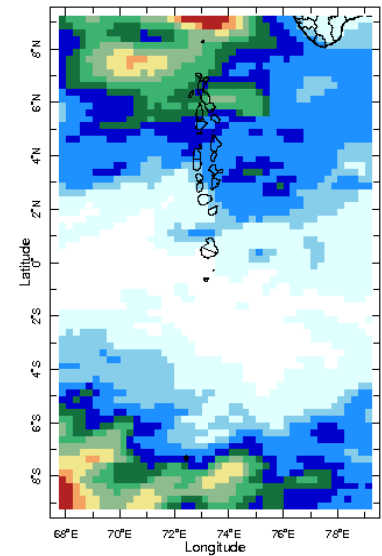
14 Aug 2024



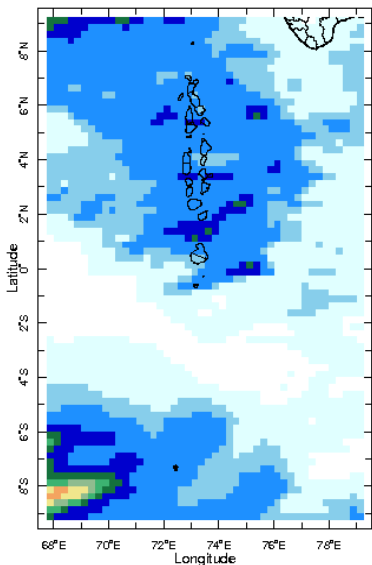
15 Aug 2024



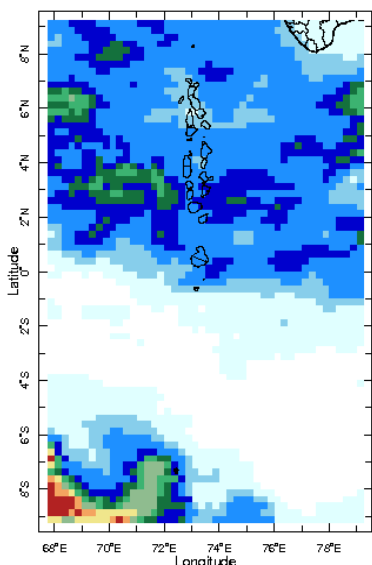
16 Aug 2024



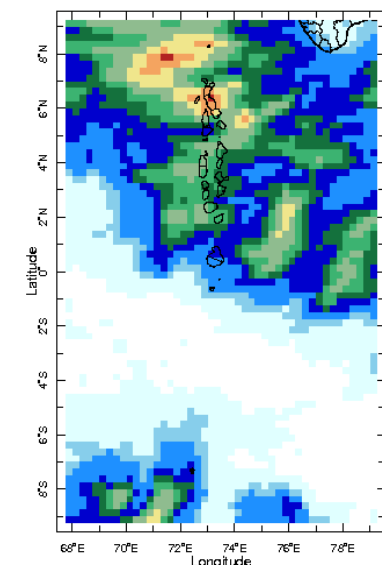
17 Aug 2024



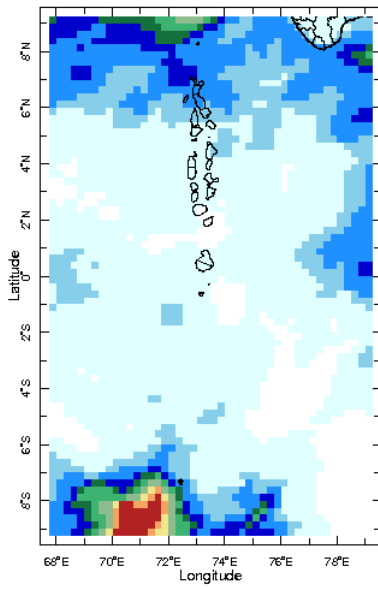
18 Aug 2024



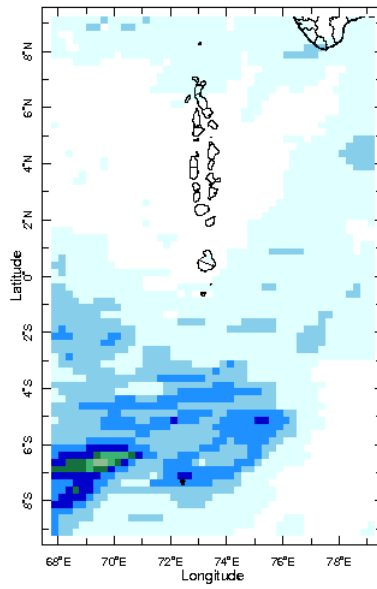
19 Aug 2024



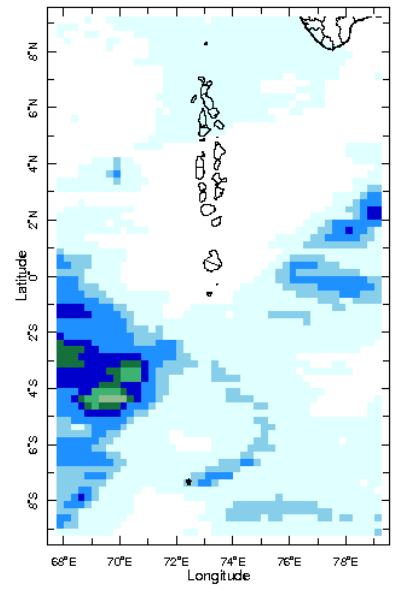
20 Aug 2024



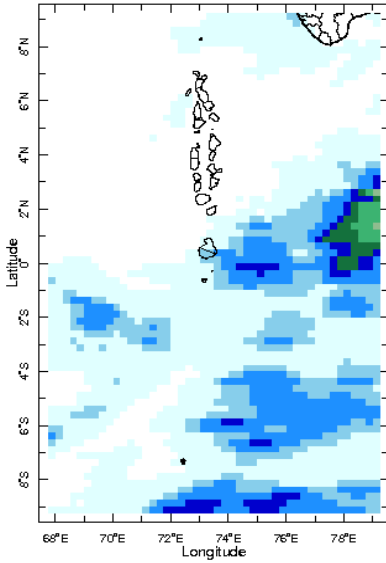
21 Aug 2024



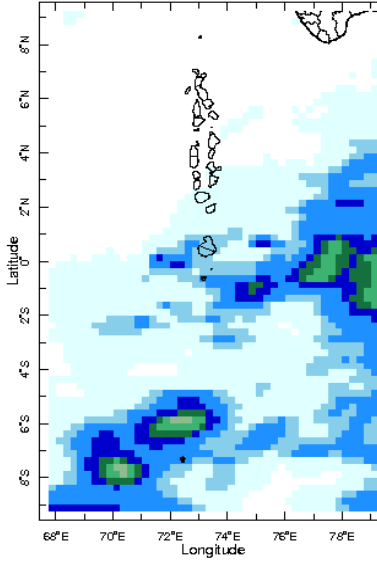
22 Aug 2024



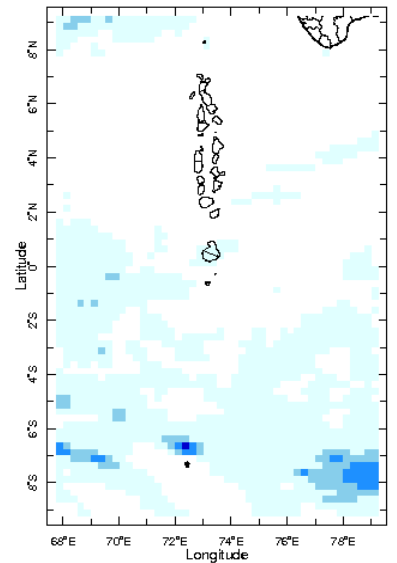
23 Aug 2024



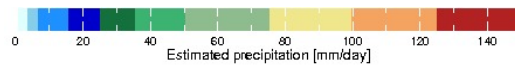
24 Aug 2024



25 Aug 2024

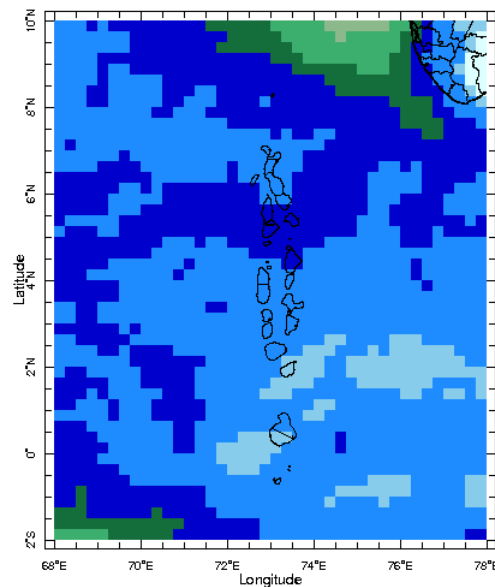


26 Aug 2024

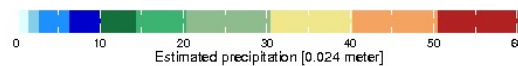


Monthly Rainfall Monitoring

The figure shows the average observed rainfall in the previous month.



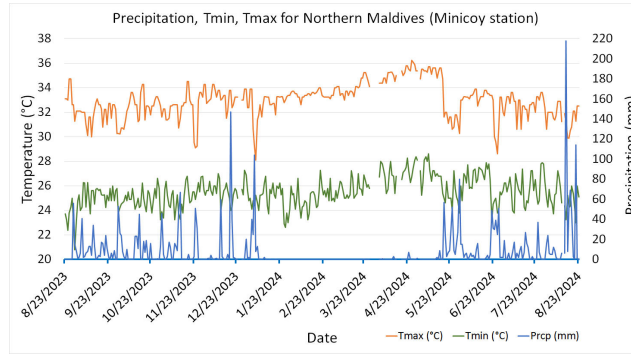
Jul 2024



Monthly Average

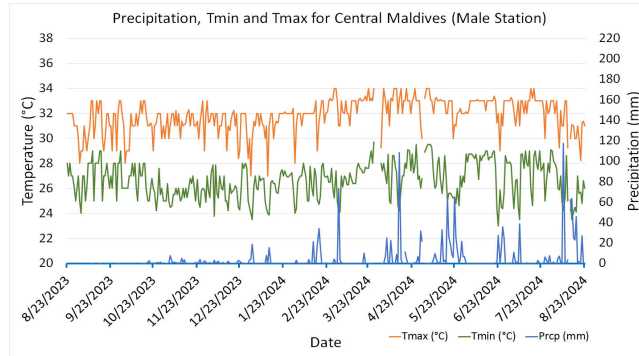
Monthly and Seasonal Monitoring

Northern Maldives:



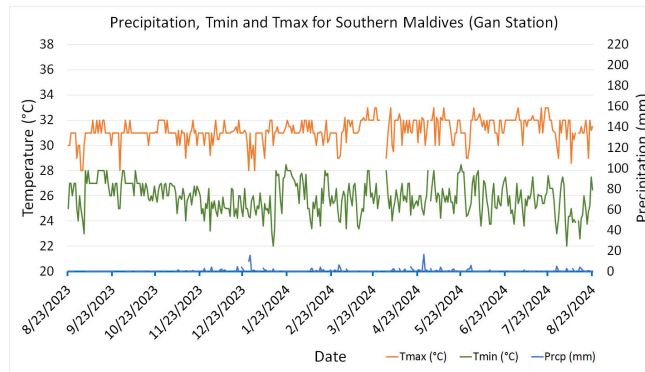
Daily Rainfall, Tmin & Tmax for the previous year in Minicoy station (2023 Aug to 2024 Aug)

Central Maldives:



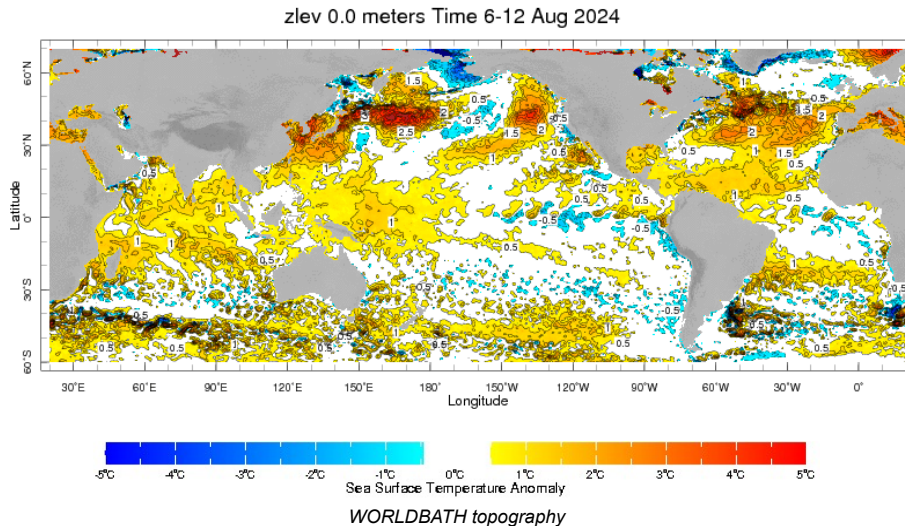
Daily Rainfall, Tmin & Tmax for the previous year in Male station (2023 Aug to 2024 Aug)

Southern Maldives:

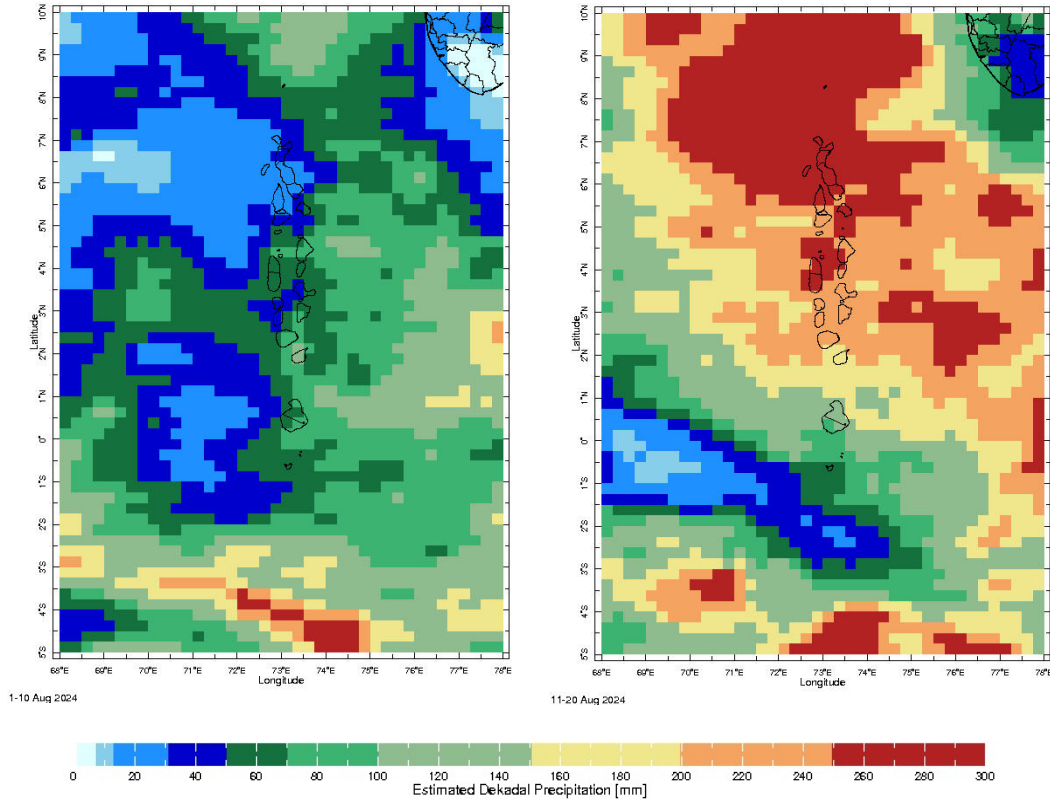


Daily Rainfall, Tmin & Tmax for the previous year in Gan station (2023 Aug to 2024 Aug)

Ocean Surface Monitoring

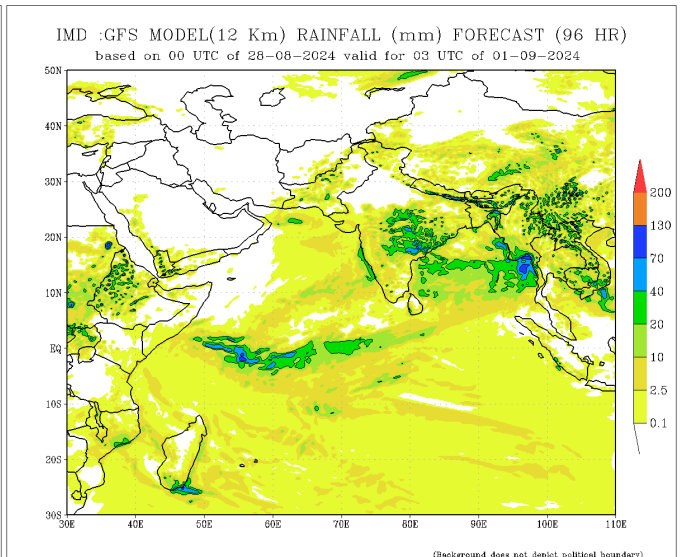
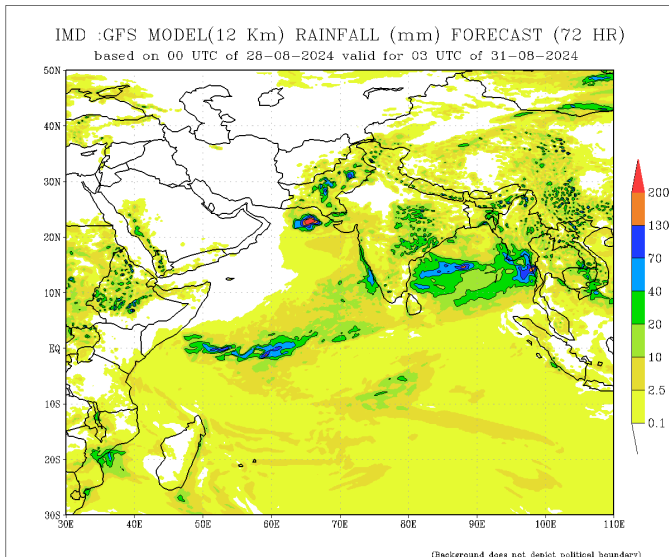
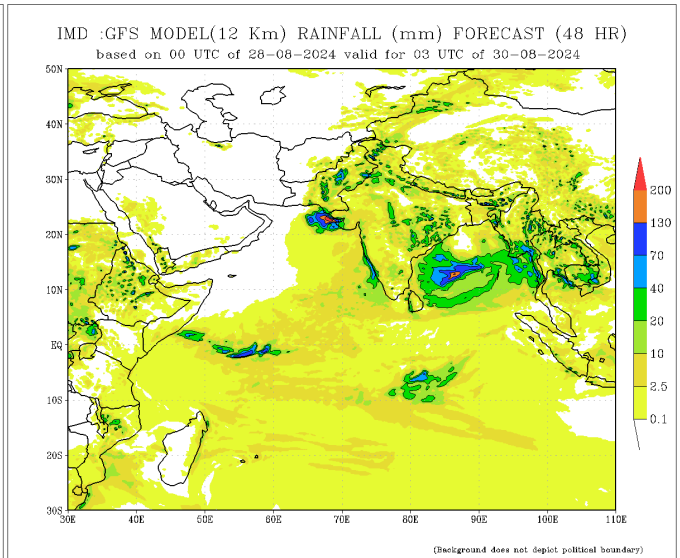
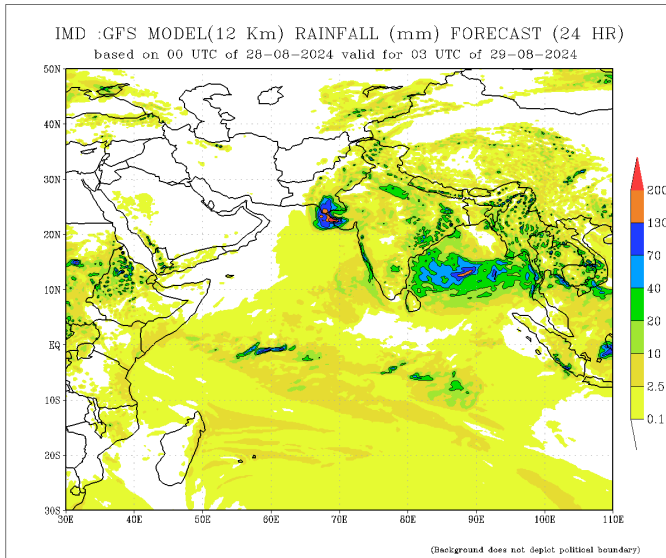


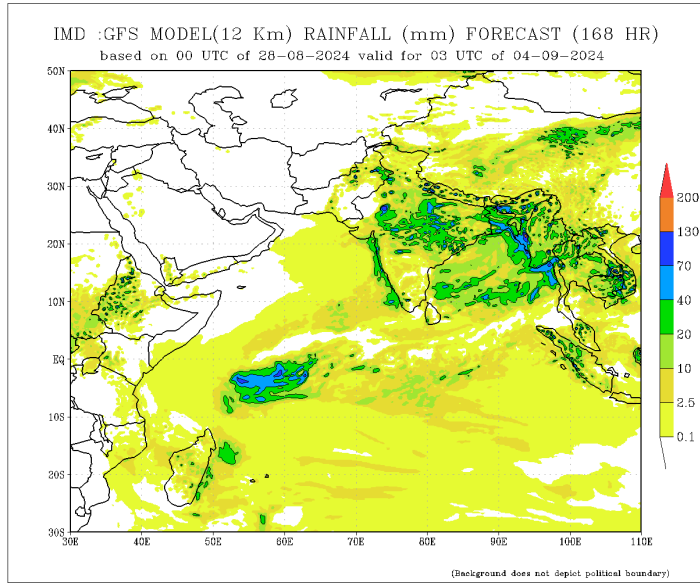
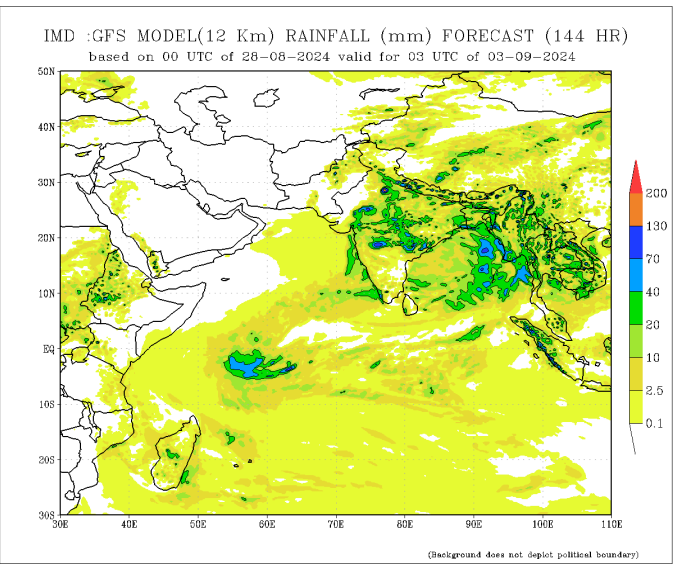
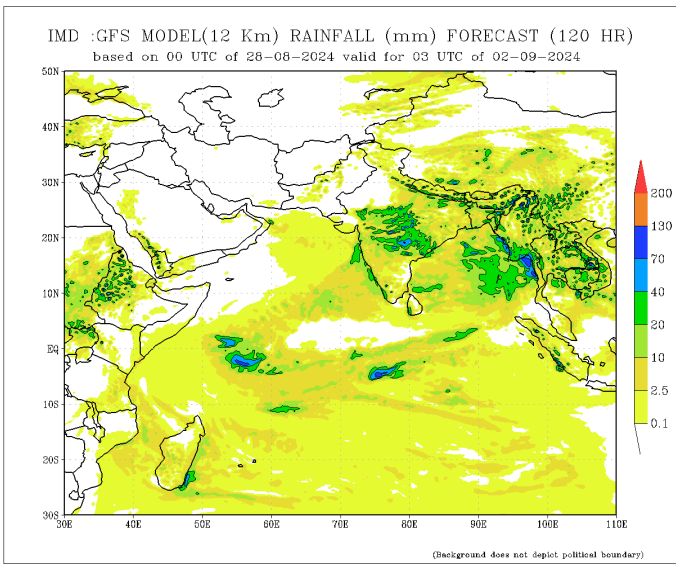
Dekadal (10 Day) Satellite Derived Rainfall Estimates



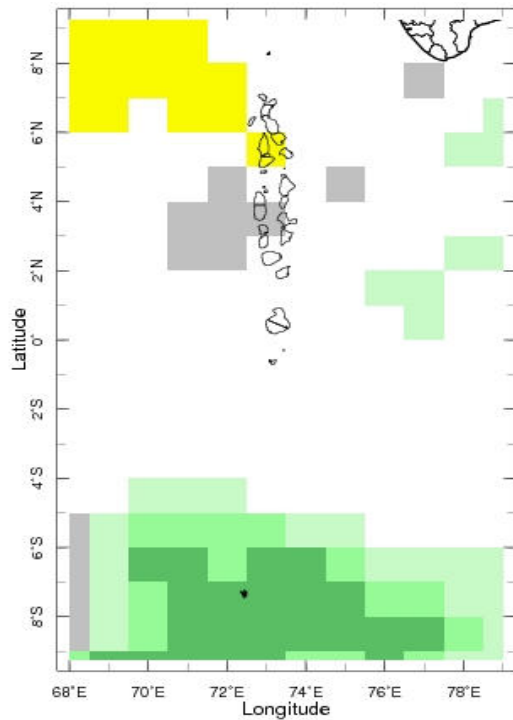
Daily Rainfall Forecast

Daily Rainfall forecasts (up to 7 days ahead) from the IMD is provided in figures below. These predictions are from the GFS (T1534) model covering the entire south Asian region.

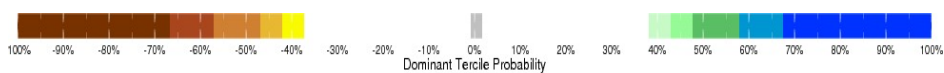




Weekly Precipitation Forecast



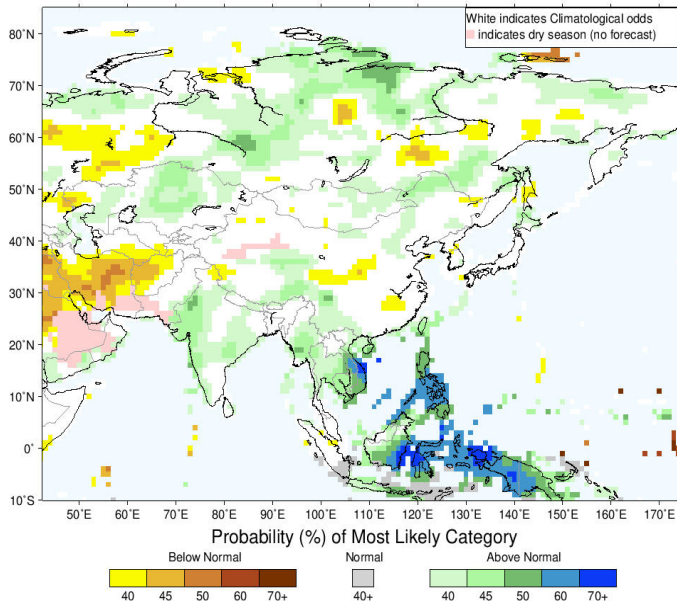
31 Aug 2024 - 13 Sep 2024 IRI SubX Precipitation Forecast is



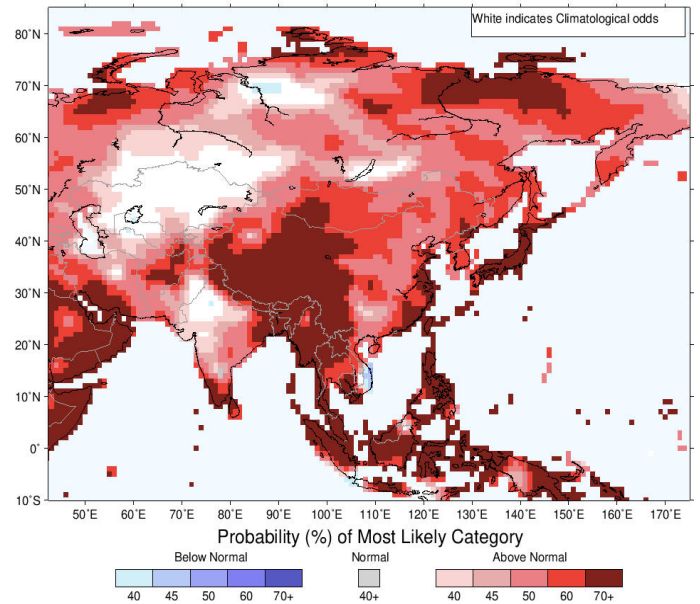
Seasonal Rainfall and Temperature Forecast

Following is the latest seasonal precipitation and temperature prediction for the next 3 months by the IRI. The color shading indicates the probability of the most dominant tercile -- that is, the tercile having the highest forecast probability. The color bar alongside the map defines these dominant tercile probability levels. The upper side of the color bar shows the colors used for increasingly strong probabilities when the dominant tercile is the above-normal tercile, while the lower side shows likewise for the below-normal tercile. The gray color indicates an enhanced probability for the near-normal tercile (nearly always limited to 40%).

IRI Multi-Model Probability Forecast for Precipitation for September–October–November 2024, Issued August 2024



IRI Multi-Model Probability Forecast for Temperature for September–October–November 2024, Issued August 2024



Subscribe to our Monthly Maldives Newsletter

Subscribe

Follow @fectmv

Contact Us
 email: fectmv@gmail.com
 phone: (+96) 07 788010
 blog: www.lectmv.blogspot.com

Foundation for Environment, Climate & Technology,
 REM, Madhrasaadhoshuge,
 Henveiru, Hadheebee Magu,
 Male', 20184,
 Maldives