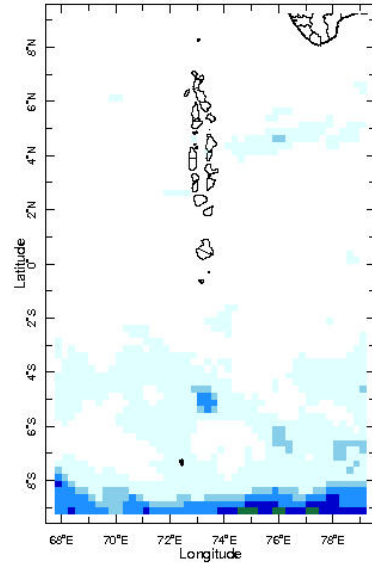


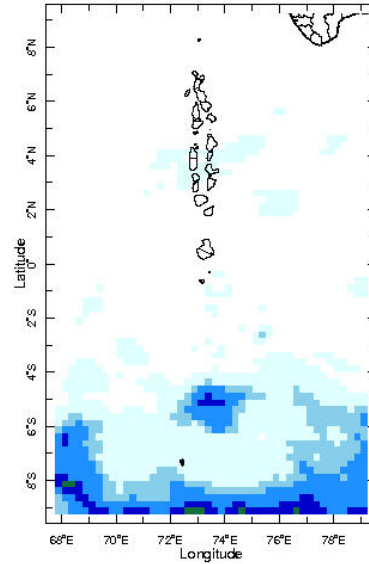


Daily Rainfall Monitoring

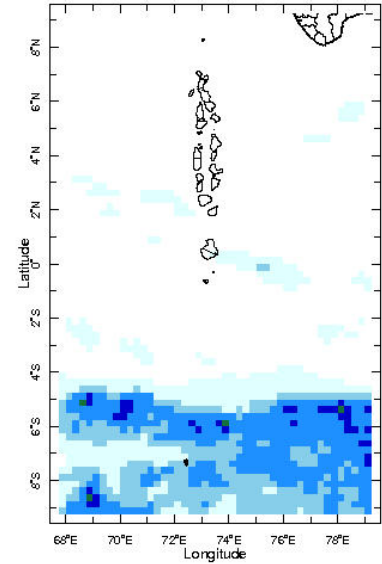
The following figures show the observed rainfall in the last 15 days in Maldives.



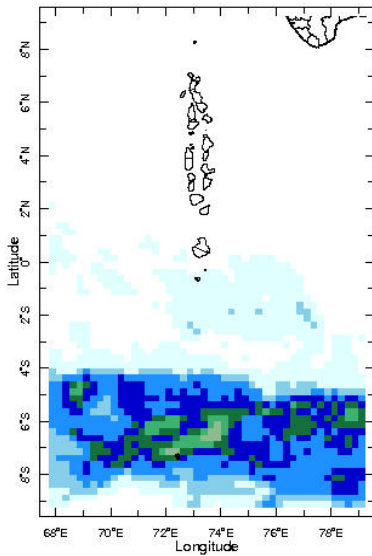
12 Feb 2025



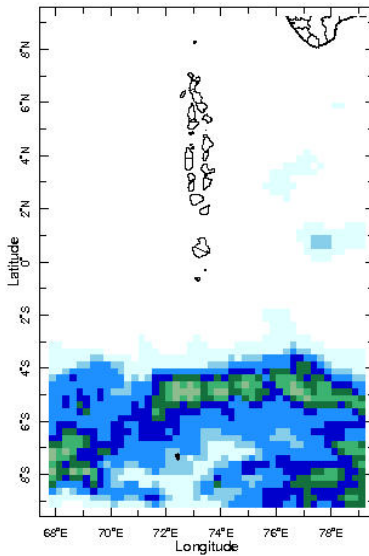
13 Feb 2025



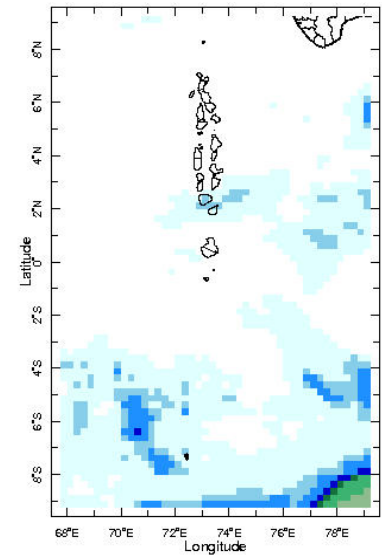
14 Feb 2025



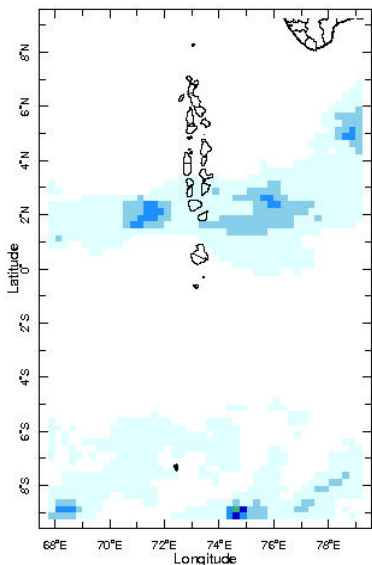
15 Feb 2025



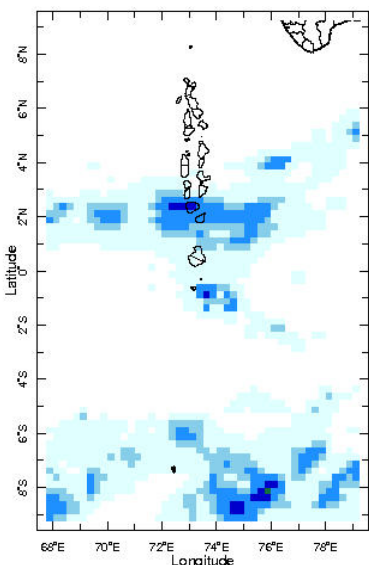
16 Feb 2025



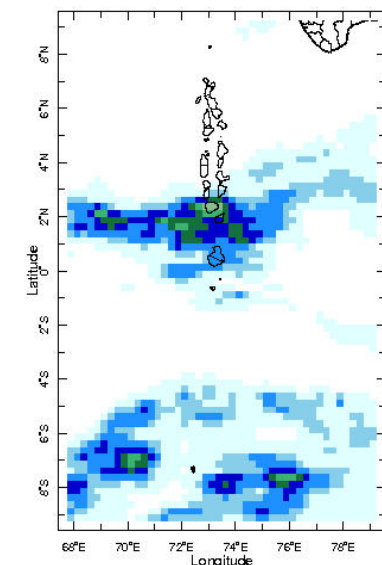
17 Feb 2025



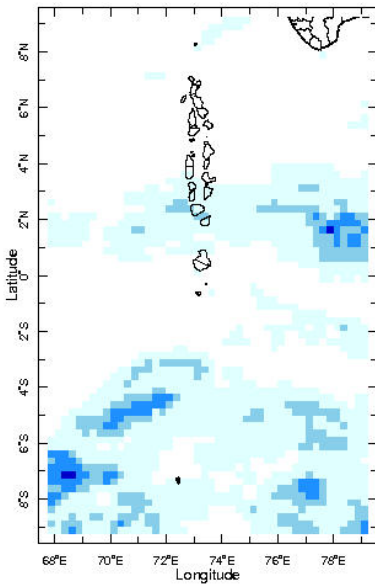
18 Feb 2025



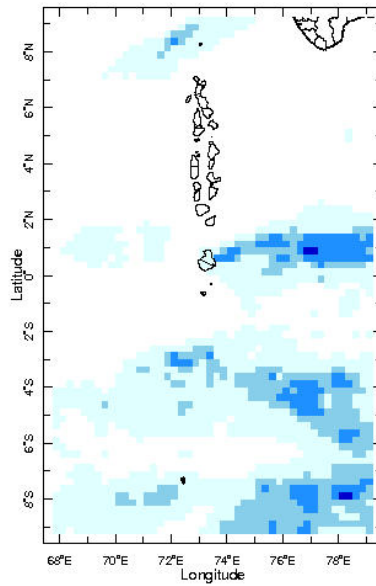
19 Feb 2025



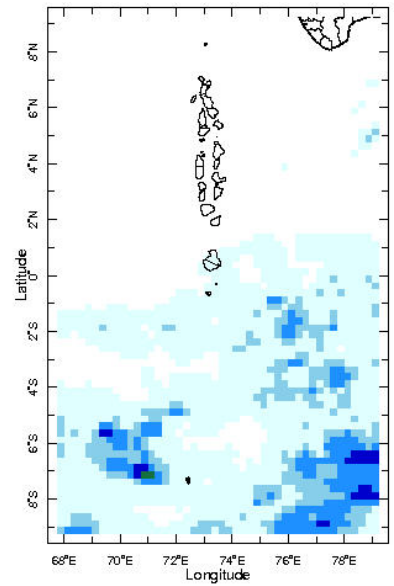
20 Feb 2025



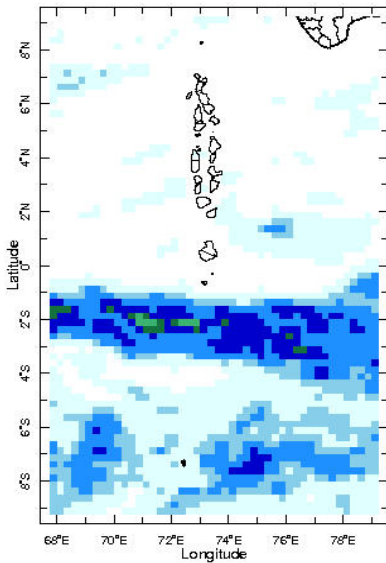
21 Feb 2025



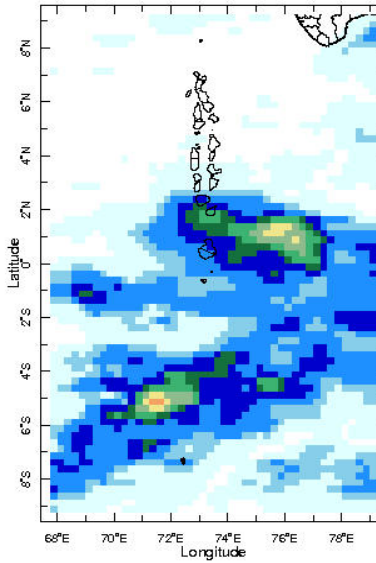
22 Feb 2025



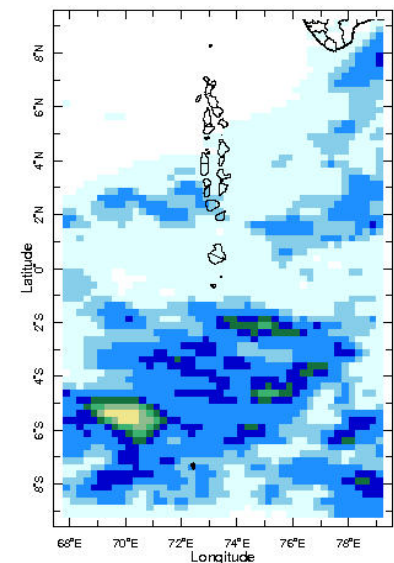
23 Feb 2025



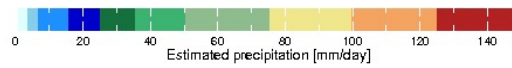
24 Feb 2025



25 Feb 2025

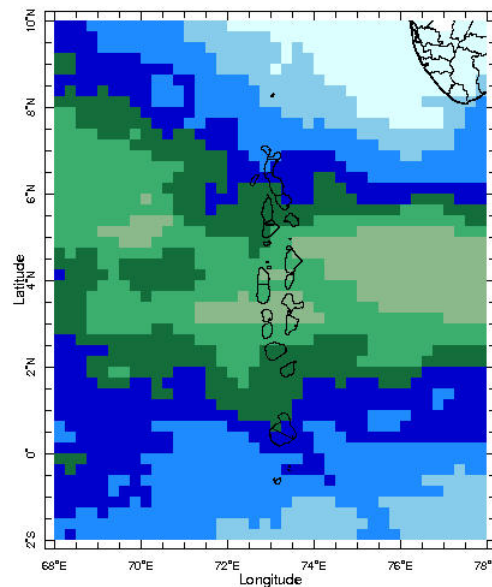


26 Feb 2025

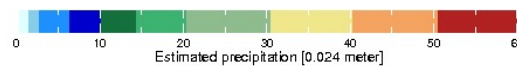


Monthly Rainfall Monitoring

The figure shows the average observed rainfall in the previous month.



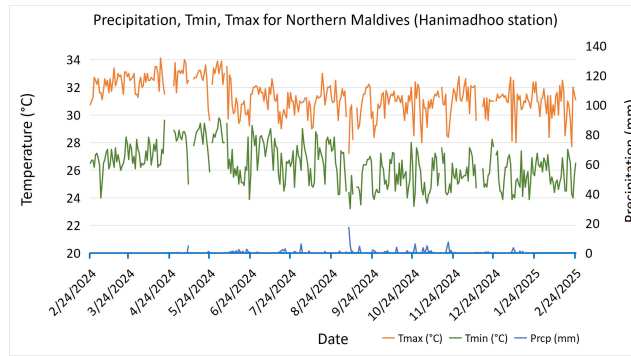
Jan 2025



Monthly Average

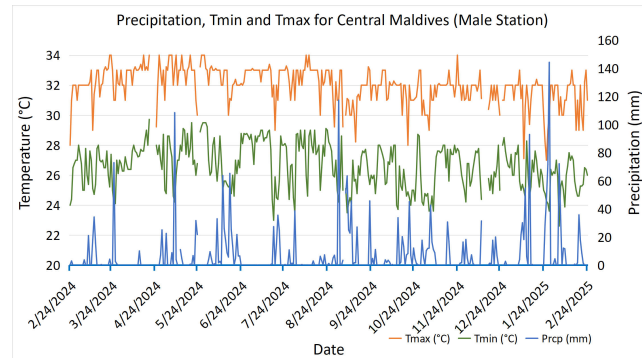
Monthly and Seasonal Monitoring

Northern Maldives:



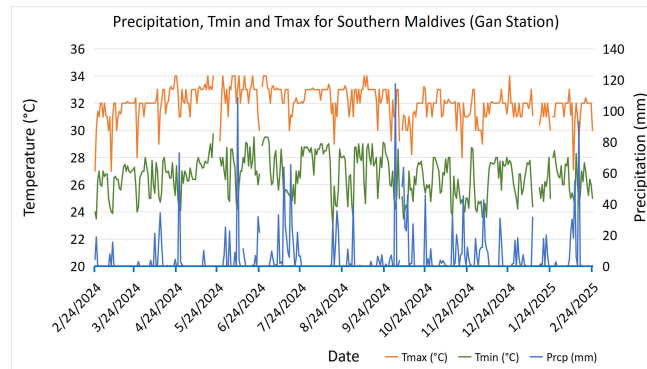
Daily Rainfall, Tmin & Tmax for the previous year in Hanimadhoo station (2024 Feb to 2025 Feb)

Central Maldives:



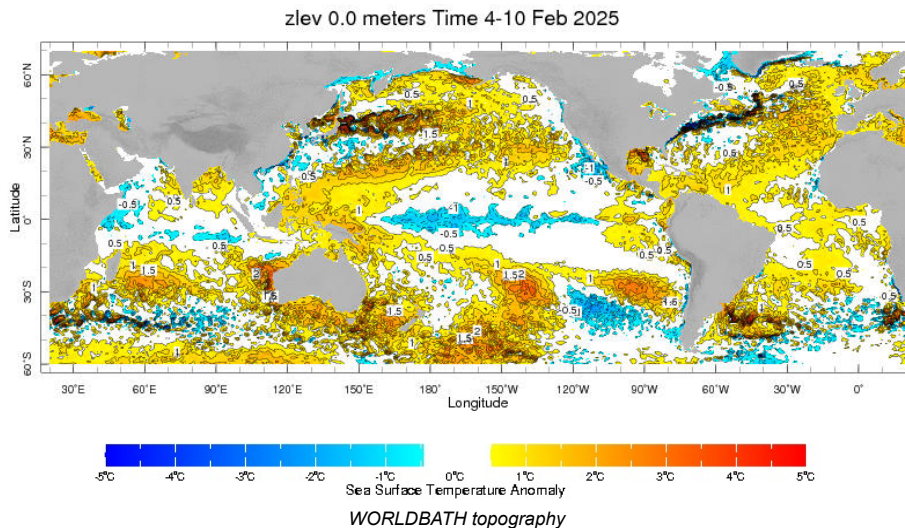
Daily Rainfall, Tmin & Tmax for the previous year in Male station (2024 Feb to 2025 Feb)

Southern Maldives:

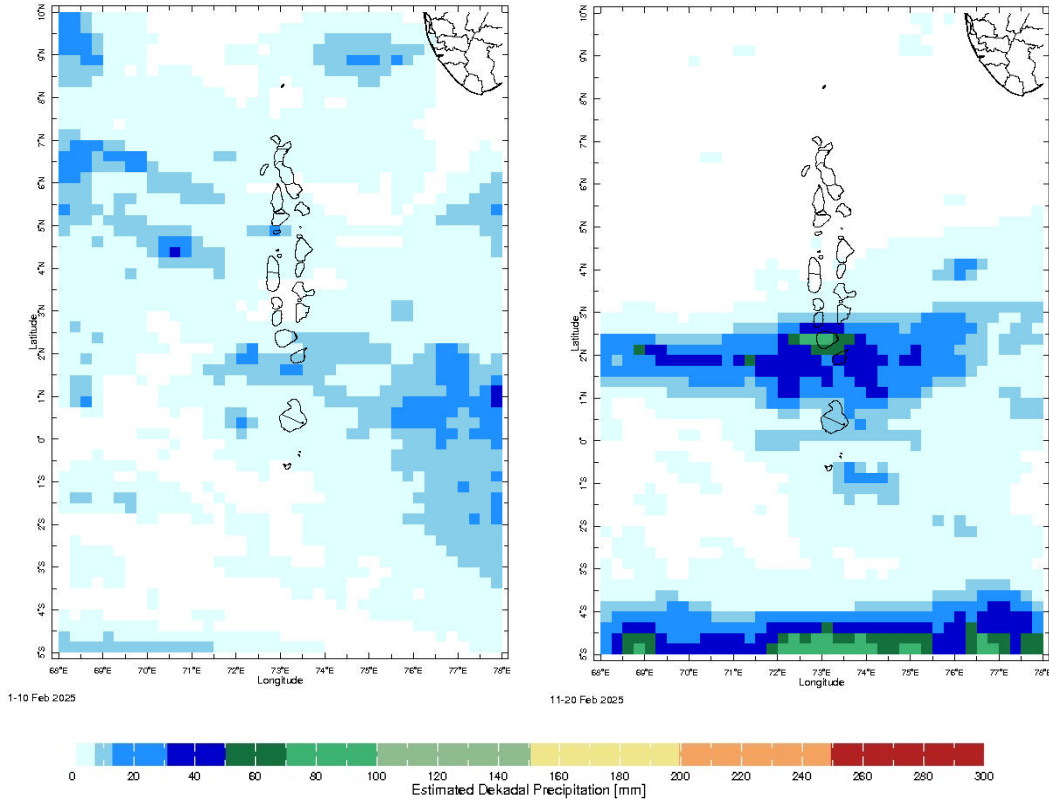


Daily Rainfall, Tmin & Tmax for the previous year in Gan station (2024 Feb to 2025 Feb)

Ocean Surface Monitoring

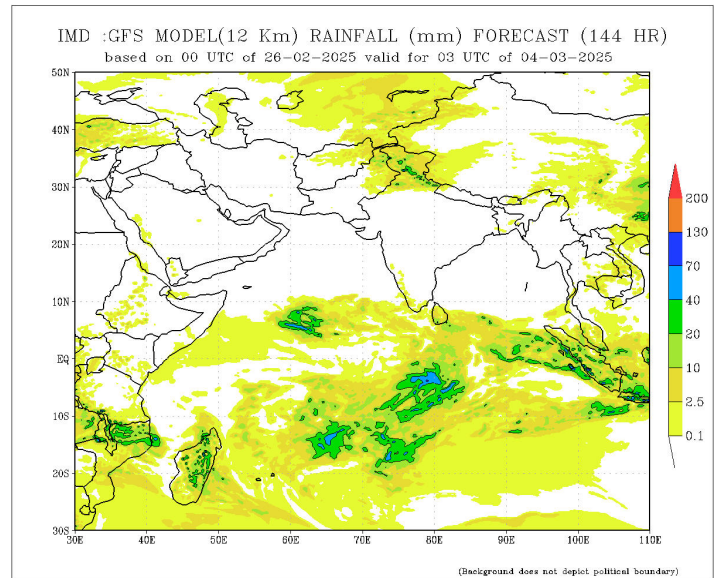
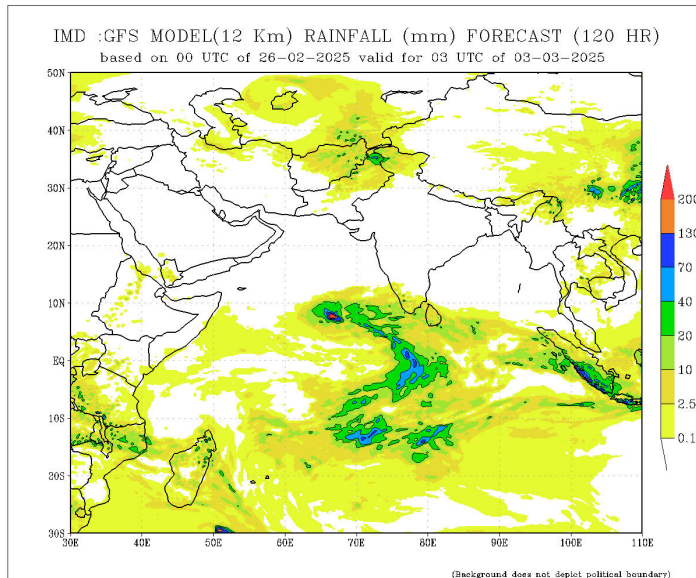
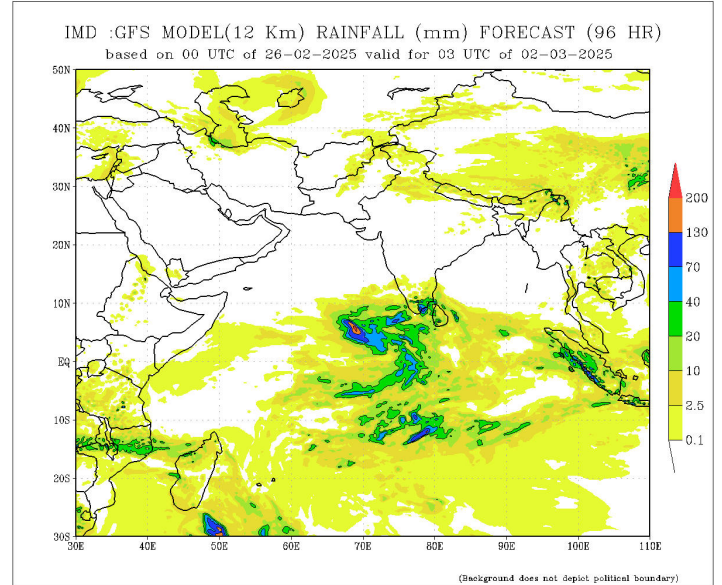
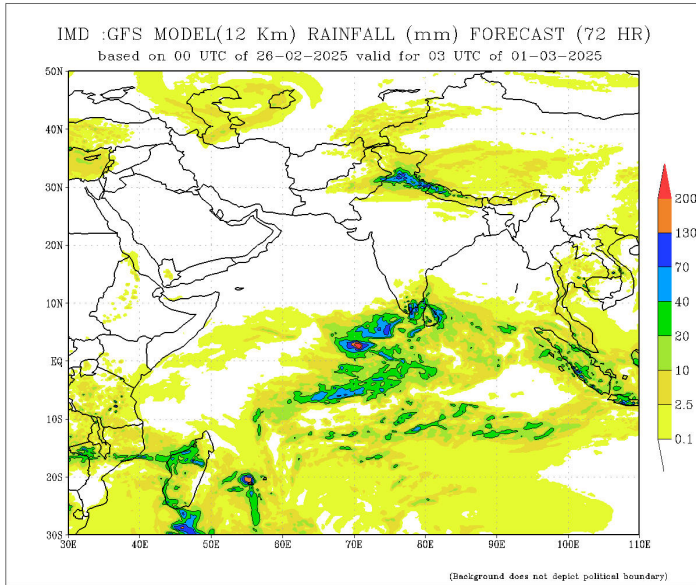


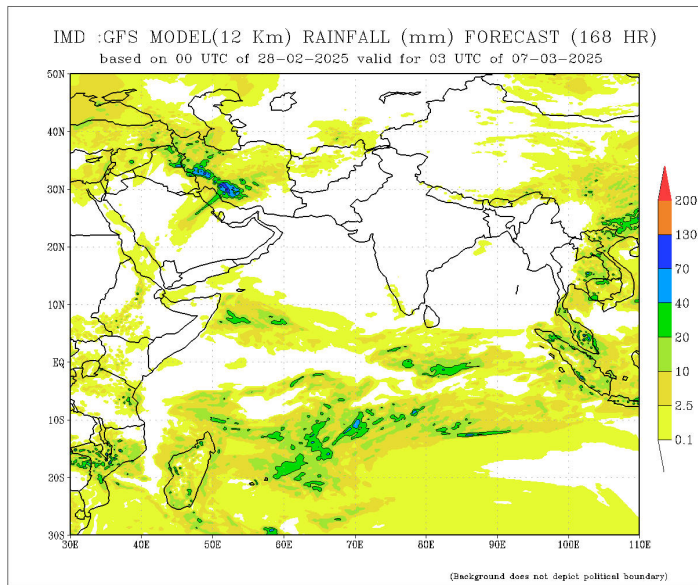
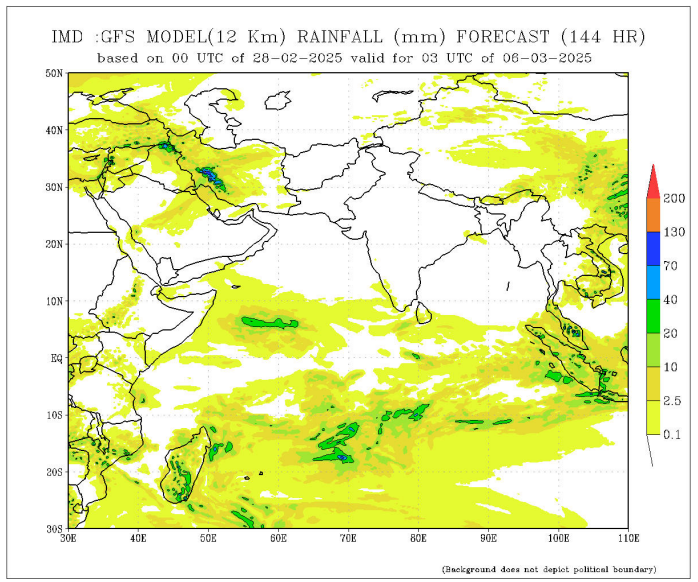
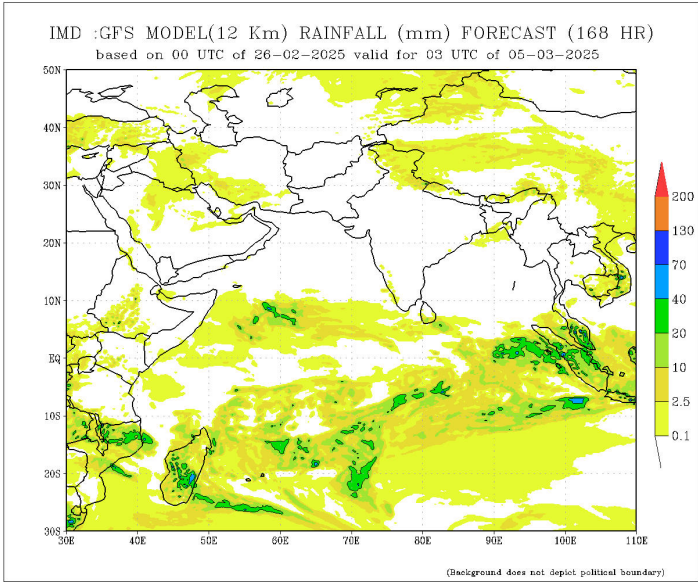
Dekadal (10 Day) Satellite Derived Rainfall Estimates



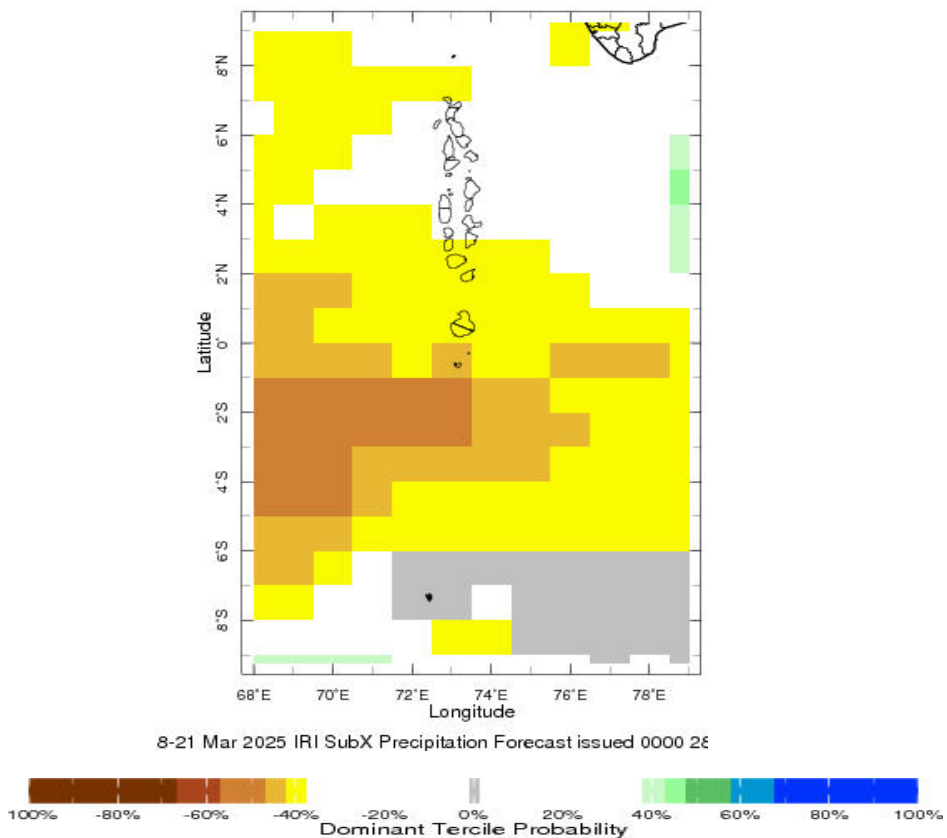
Daily Rainfall Forecast

Daily Rainfall forecasts (up to 7 days ahead) from the IMD is provided in figures below. These predictions are from the GFS (T1534) model covering the entire south Asian region.





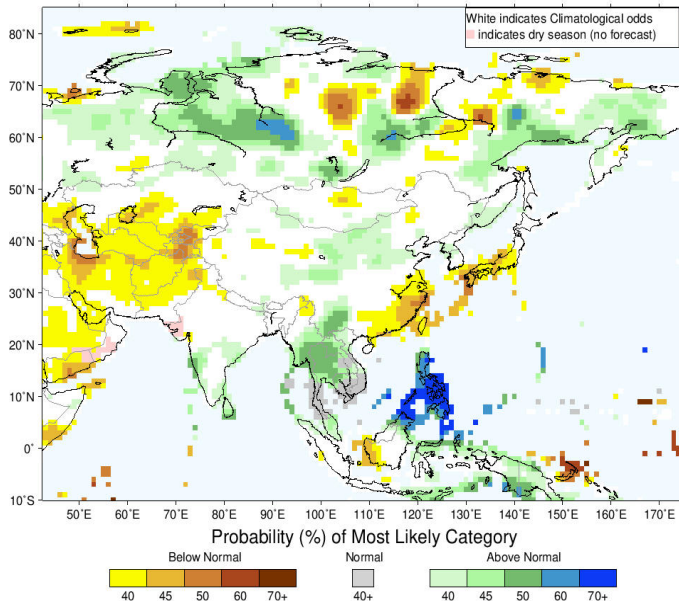
Weekly Precipitation Forecast



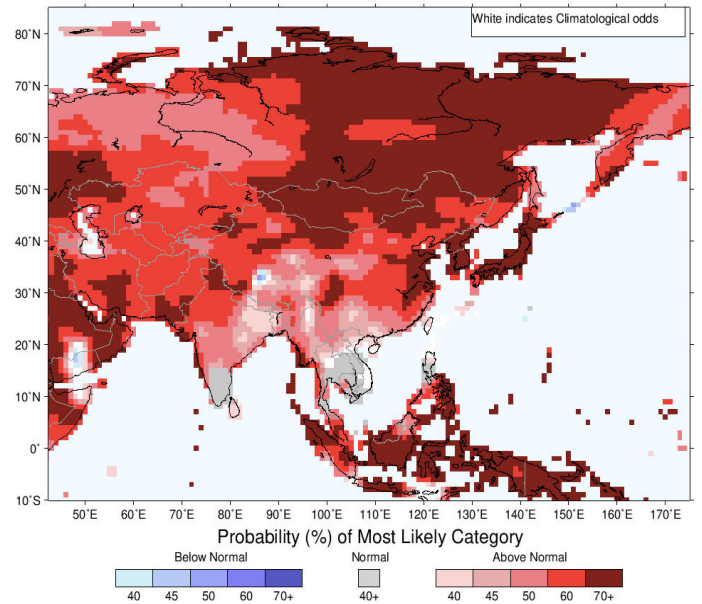
Seasonal Rainfall and Temperature Forecast

Following is the latest seasonal precipitation and temperature prediction for the next 3 months by the IRI. The color shading indicates the probability of the most dominant tercile -- that is, the tercile having the highest forecast probability. The color bar alongside the map defines these dominant tercile probability levels. The upper side of the color bar shows the colors used for increasingly strong probabilities when the dominant tercile is the above-normal tercile, while the lower side shows likewise for the below-normal tercile. The gray color indicates an enhanced probability for the near-normal tercile (nearly always limited to 40%).

IRI Multi-Model Probability Forecast for Precipitation for March-April-May 2025, Issued February 2025



IRI Multi-Model Probability Forecast for Temperature for March-April-May 2025, Issued February 2025



Subscribe to our Monthly Maldives Newsletter

Subscribe

Follow @fectmv

Contact Us

email: fectmv@gmail.com

phone: (+96) 07 788010

blog: www.lectmv.blogspot.com

website: www.climate.mv

Foundation for Environment, Climate & Technology,
 REM, Madhrasaadhoshuge,
 Henveiru, Hadheebee Magu,
 Male', 20184,
 Maldives