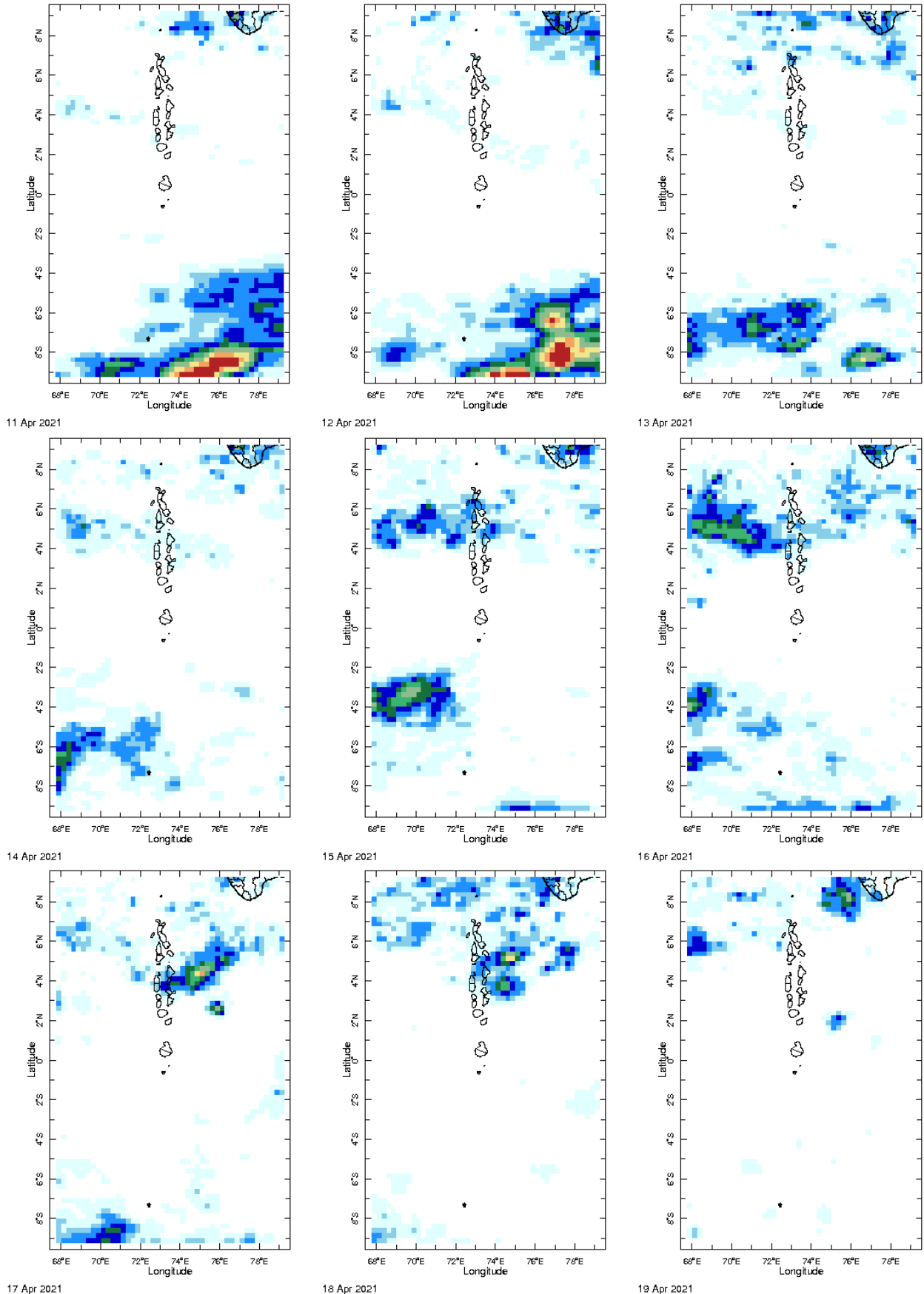
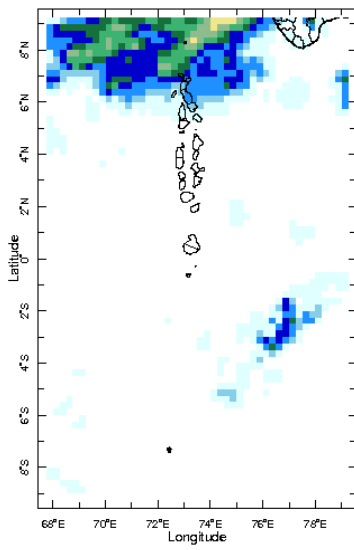




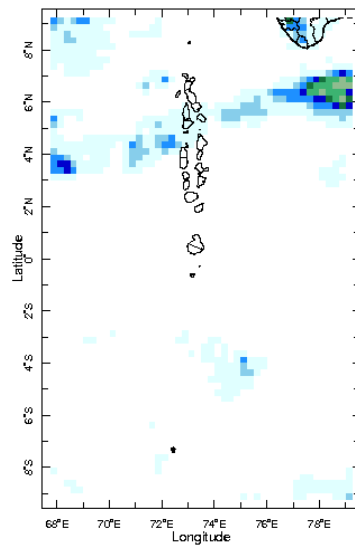
## Daily Rainfall Monitoring

The following figures show the observed rainfall in the last 15 days in Maldives.

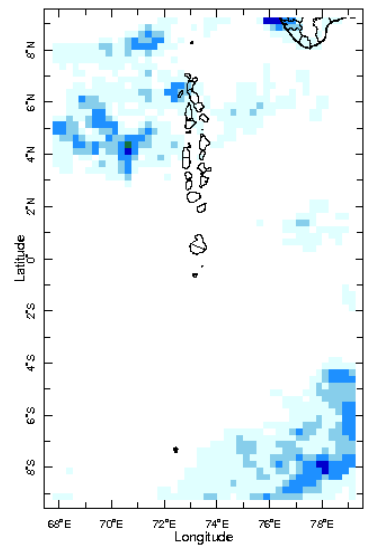




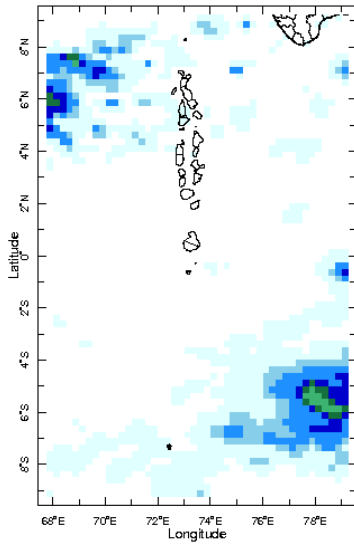
20 Apr 2021



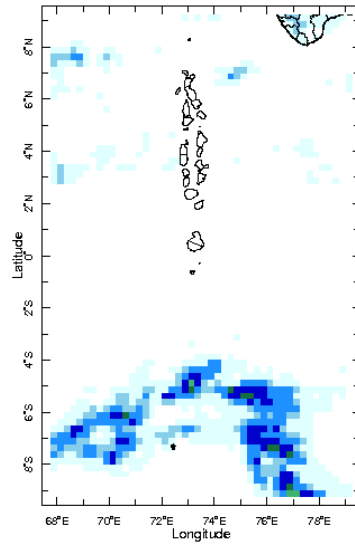
21 Apr 2021



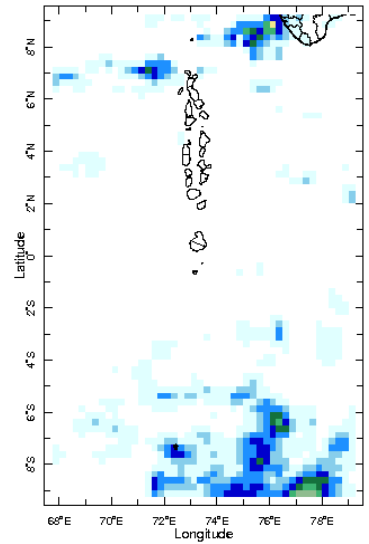
22 Apr 2021



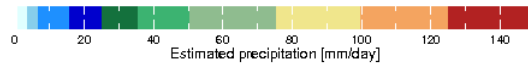
23 Apr 2021



24 Apr 2021

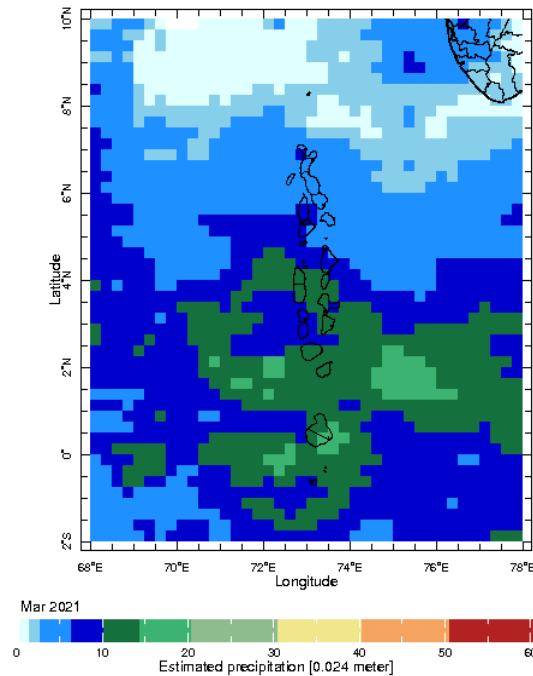


25 Apr 2021



## Monthly Rainfall Monitoring

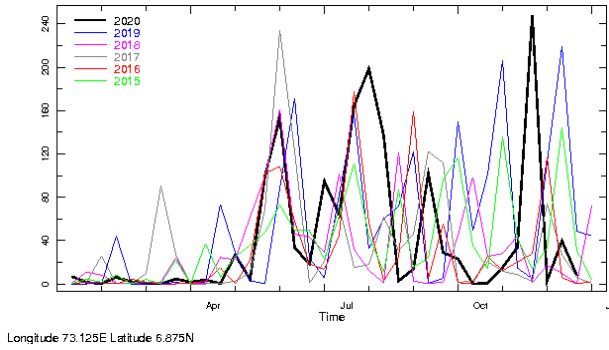
The figure shows the average observed rainfall in the previous month.



Monthly Average

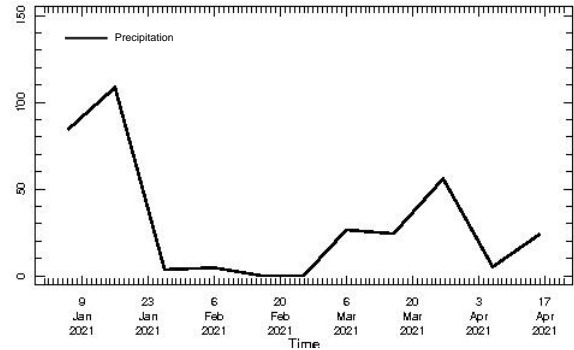
# Monthly and Seasonal Monitoring

## Northern Maldives:

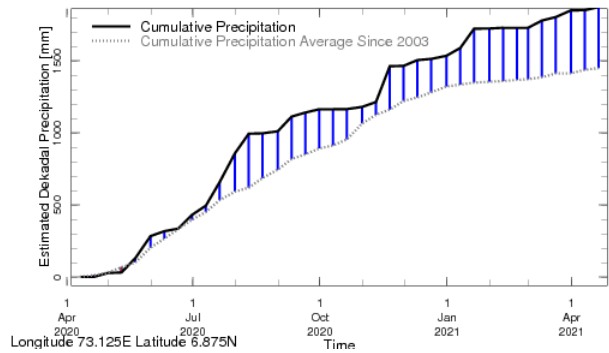


Comparison of rainfall in the past 6 years

Longitude 73.125E Latitude 6.875N

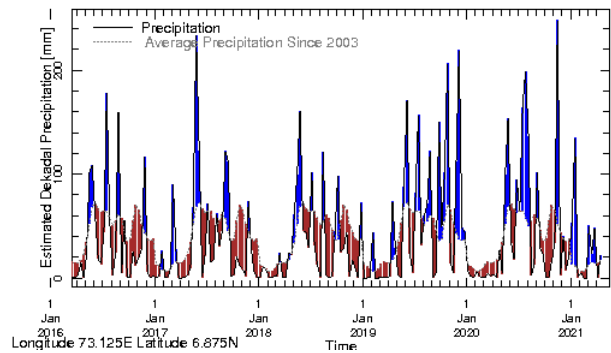


Rainfall in the current year (2021)



Rainfall of past 365 days (black) compared to average rainfall since 2003.

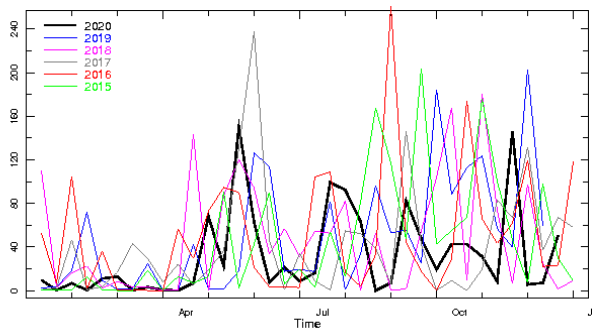
Longitude 73.125E Latitude 6.875N



Rainfall in the past 5 years with above-average rainfall hatched in blue and below-average hatched in brown

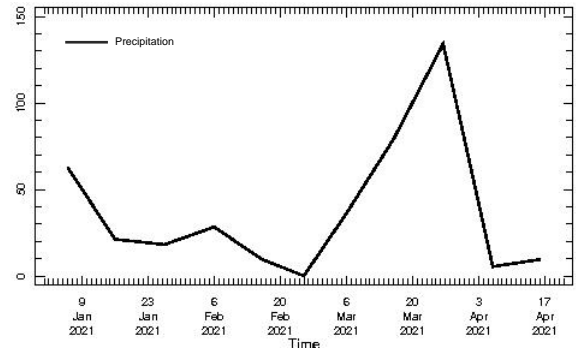
Longitude 73.125E Latitude 6.875N

## Central Maldives:

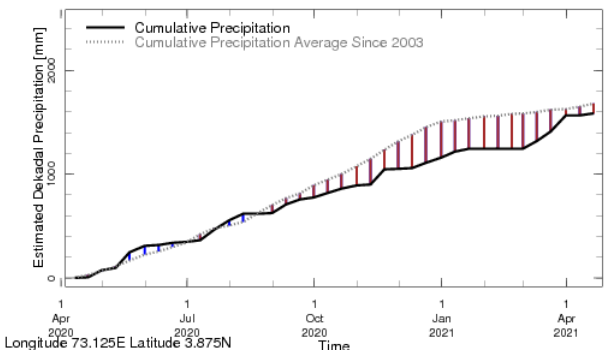


Comparison of rainfall in the past 6 years

Longitude 73.125E Latitude 3.875N

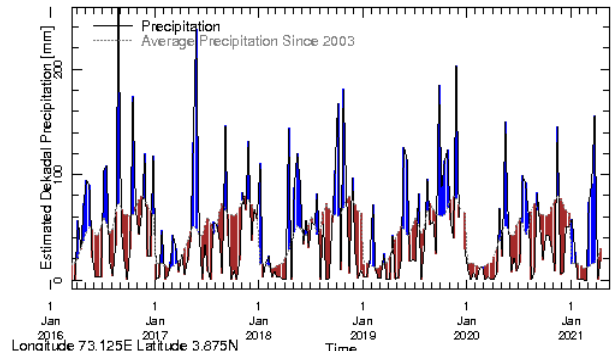


Rainfall in the current year (2021)



Rainfall of past 365 days (black) compared to average rainfall since 2003.

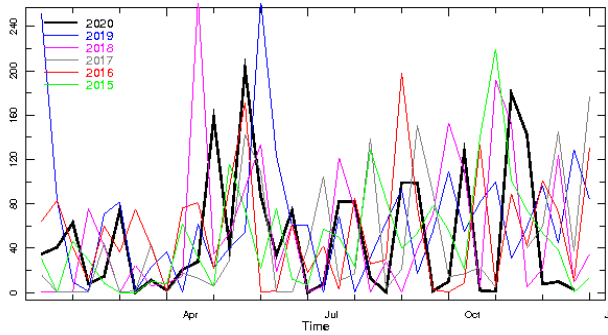
Longitude 73.125E Latitude 3.875N



Rainfall in the past 5 years with above-average rainfall hatched in blue and below-average hatched in brown

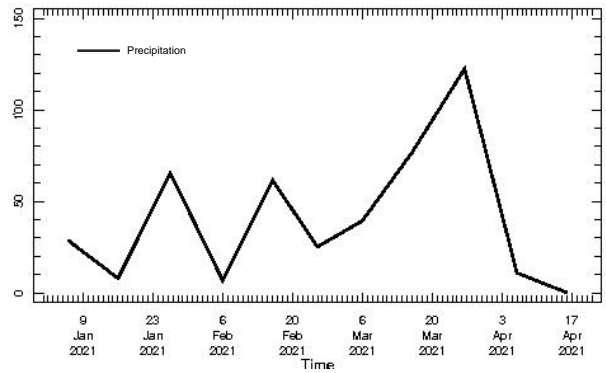
Longitude 73.125E Latitude 3.875N

**Southern Maldives:**

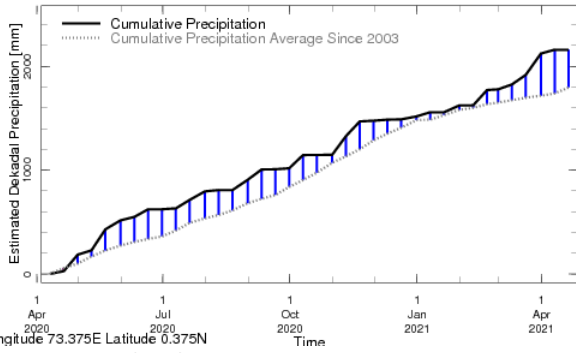


Longitude 73.375E Latitude 0.375N

**Comparison of rainfall in the past 6 years**

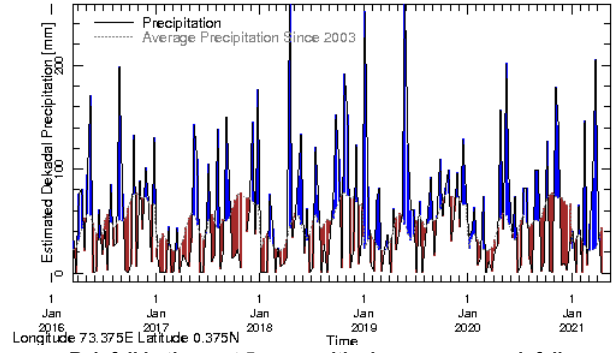


**Rainfall in the current year (2021)**



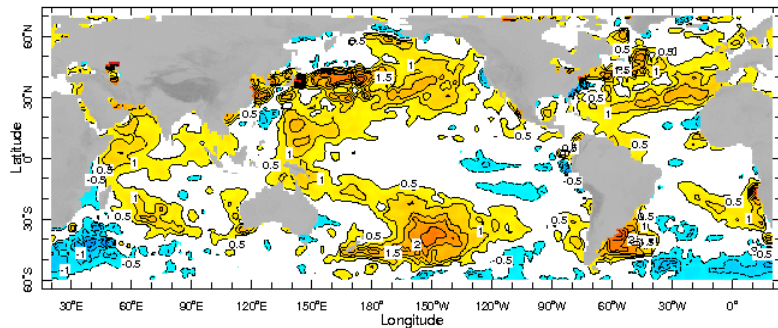
Longitude 73.375E Latitude 0.375N

**Rainfall of past 365 days (black) compared to average rainfall since 2003.**



**Rainfall in the past 5 years with above-average rainfall hatched in blue and below-average hatched in brown**

**Ocean Surface Monitoring**

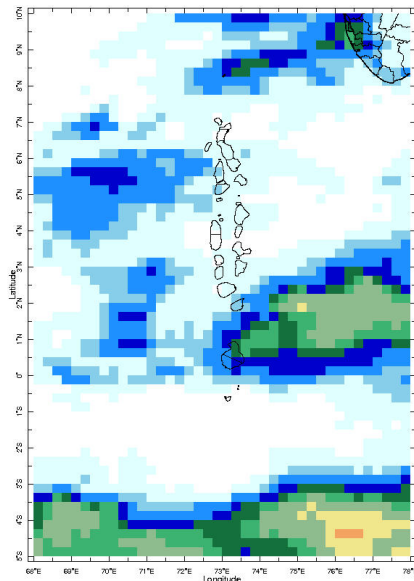


21 Apr 2021

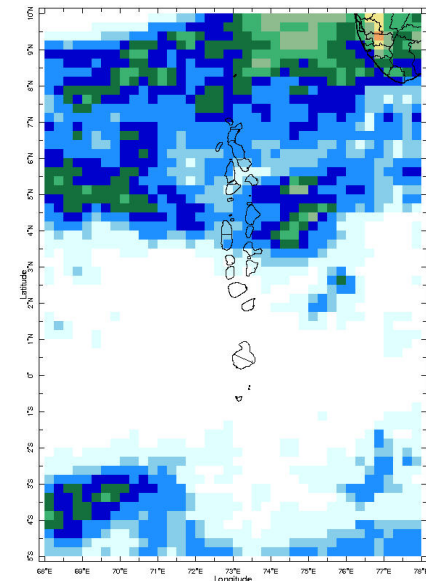


Sea Surface Temperature Anomaly  
WORLDWATCH topography

**Dekadal (10 Day) Satellite Derived Rainfall Estimates**



1-10 Apr 2021

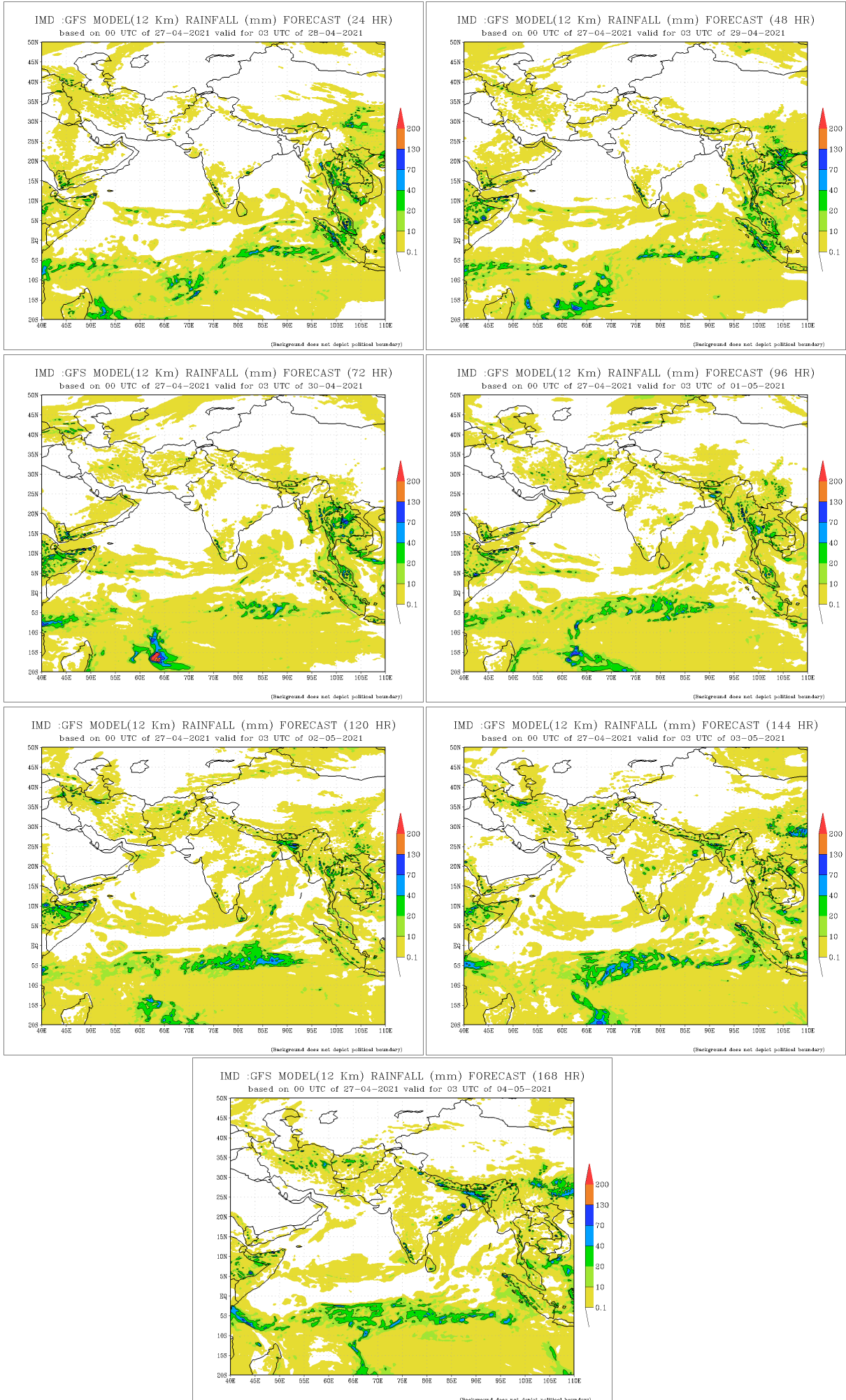


11-20 Apr 2021

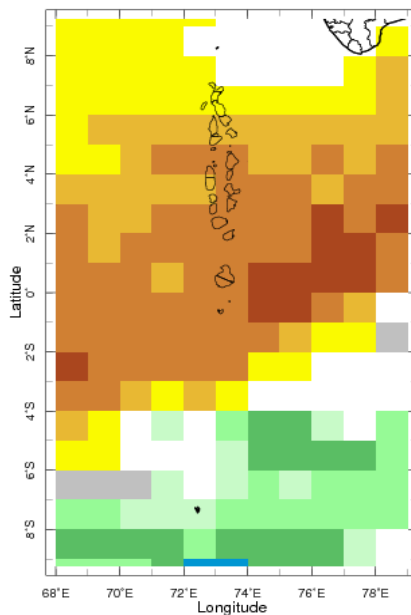


# Daily Rainfall Forecast

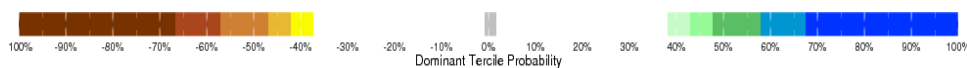
Daily Rainfall forecasts (up to 7 days ahead) from the IMD is provided in figures below. These predictions are from the GFS (T1534) model covering the entire south Asian region.



# Weekly Precipitation Forecast



24-30 Apr 2021 IRI SubX Precipitation Forecast issued 0000 2

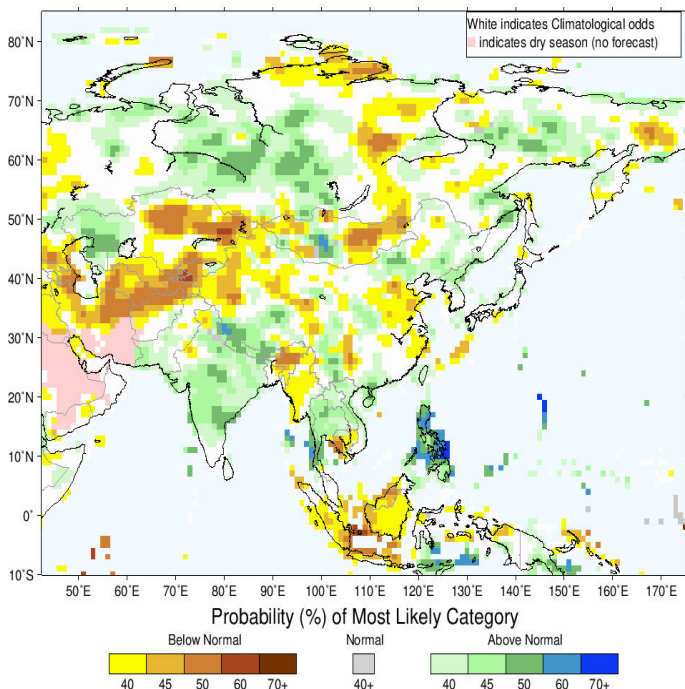


## Seasonal Rainfall and Temperature Forecast

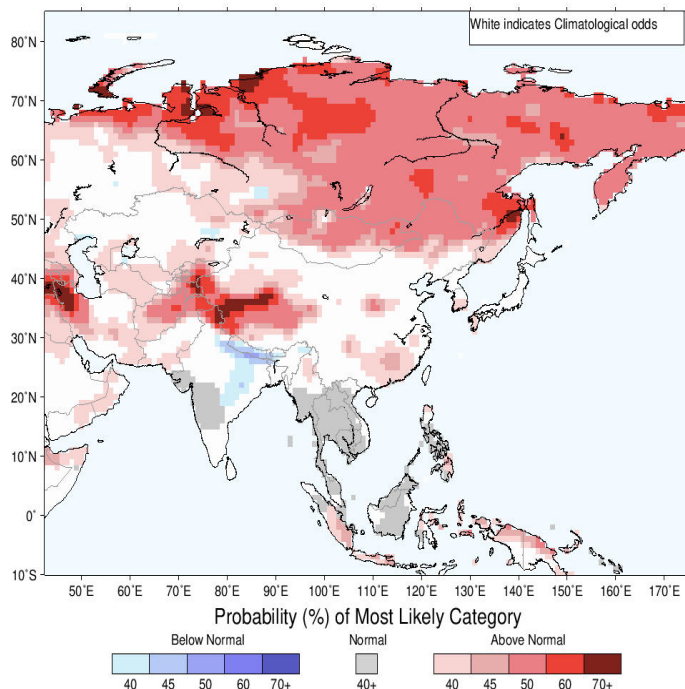
Following is the latest seasonal precipitation and temperature prediction for the next 3 months by the IRI. The color shading indicates the probability of the most dominant tercile – that is, the tercile having the highest forecast probability. The color bar alongside the map defines these dominant tercile probability levels. The upper side of the color bar shows the colors used for increasingly strong probabilities when the dominant tercile is the above-normal tercile, while the lower side shows likewise for the below-normal tercile. The gray color indicates an enhanced probability for the near-normal tercile (nearly always limited to 40%).

IRI Multi-Model Probability Forecast for Precipitation for May–June–July 2021, Issued April 2021

IRI Multi-Model Probability Forecast for Temperature for May–June–July 2021, Issued April 2021



Precipitation Forecast



Temperature Forecast

Subscribe to our Monthly Maldives Newsletter

email address

Subscribe

Follow @fectmv

Contact Us  
 email: [fectmv@gmail.com](mailto:fectmv@gmail.com)  
 phone: (+96) 07 788010  
 blog: [www.fectmv.blogspot.com](http://www.fectmv.blogspot.com)

Foundation for Environment, Climate & Technology,  
 REM, Madhrasaadhoshuge,  
 Henveiru, Hadheebee Magu,  
 Male', 20184,  
 Maldives