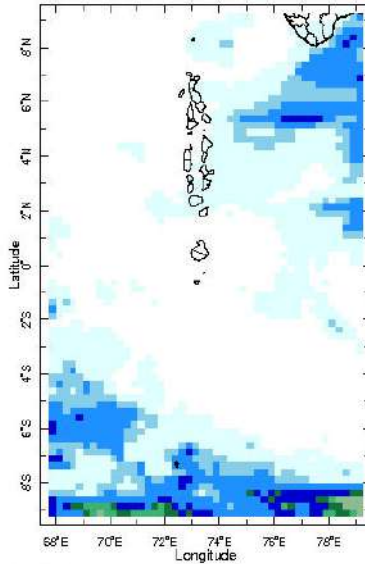


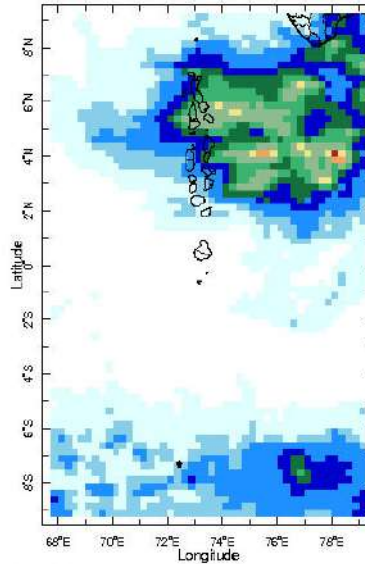


Daily Rainfall Monitoring

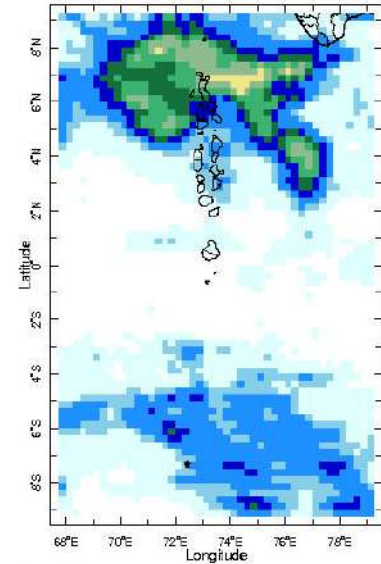
The following figures show the observed rainfall in the last 15 days in Maldives.



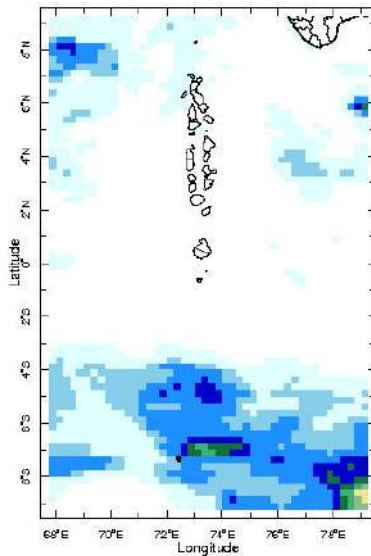
10 Mar 2025



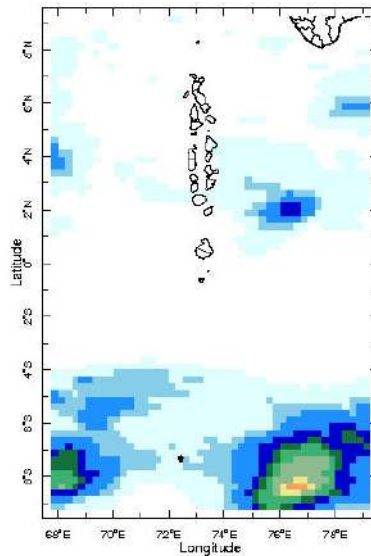
11 Mar 2025



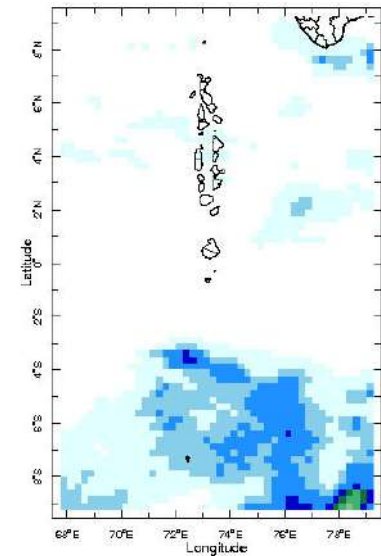
12 Mar 2025



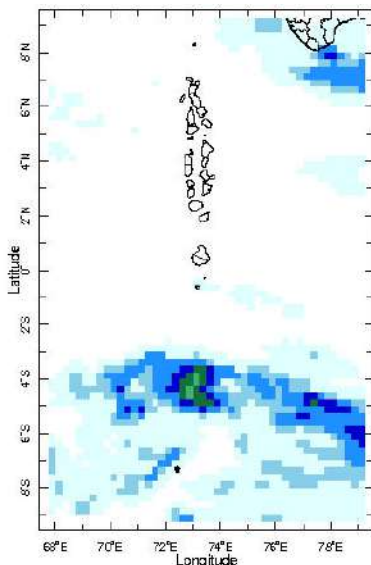
13 Mar 2025



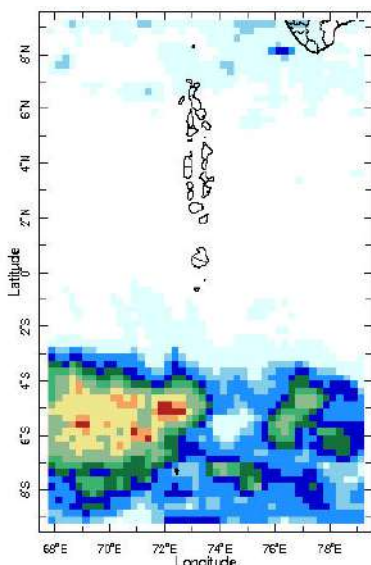
14 Mar 2025



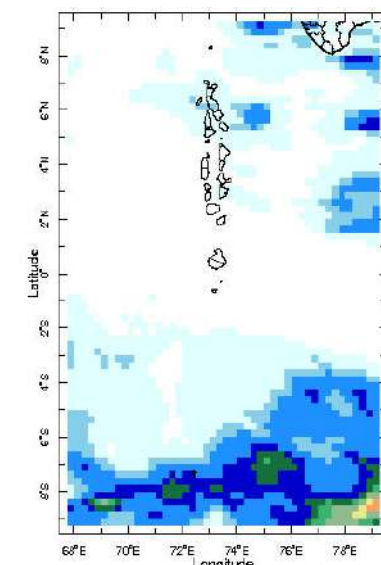
15 Mar 2025



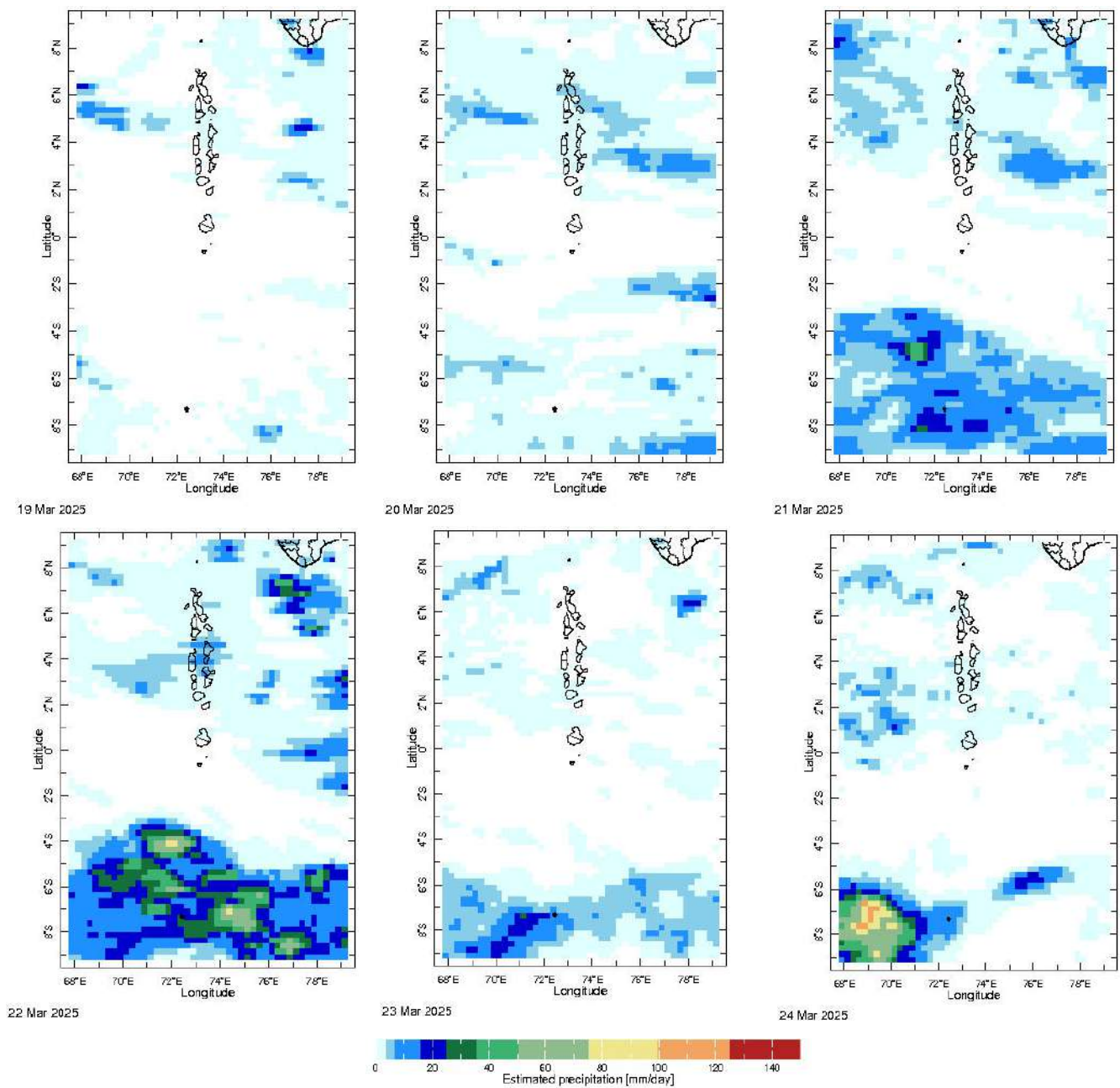
16 Mar 2025



17 Mar 2025

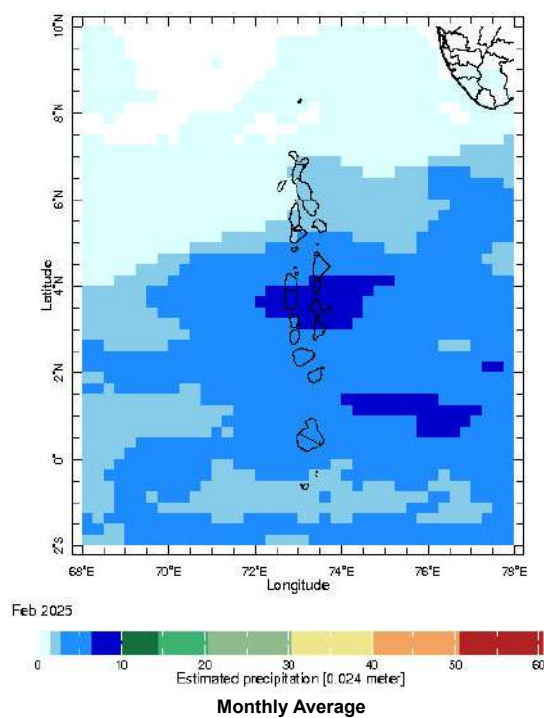


18 Mar 2025



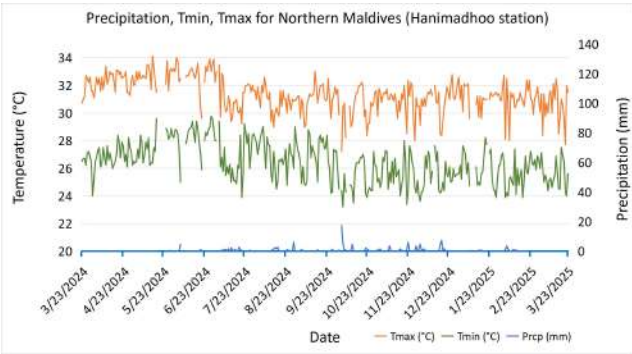
Monthly Rainfall Monitoring

The figure shows the average observed rainfall in the previous month.



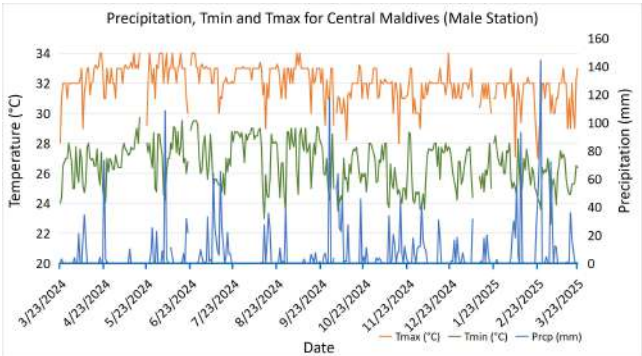
Monthly and Seasonal Monitoring

Northern Maldives:



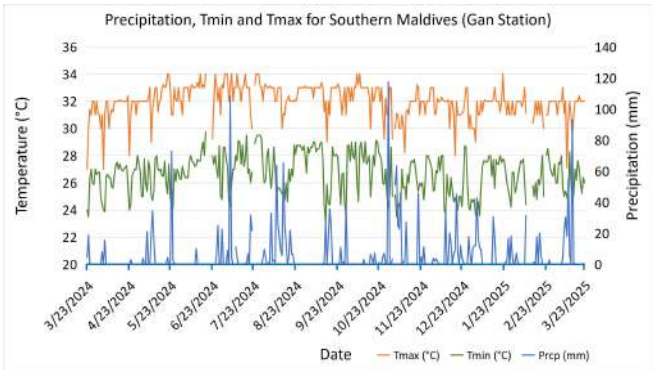
Daily Rainfall, Tmin & Tmax for the previous year in Hanimadhoo station (2024 Mar to 2025 Mar)

Central Maldives:



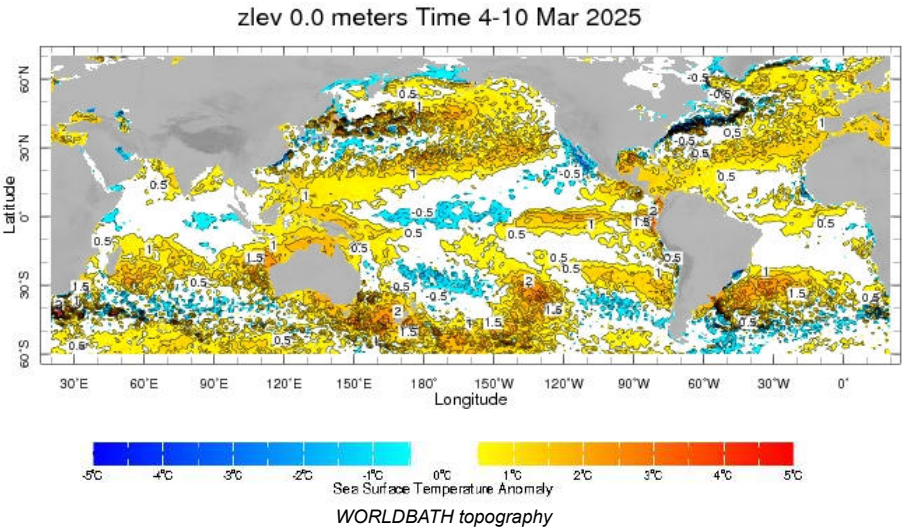
Daily Rainfall, Tmin & Tmax for the previous year in Male station (2024 Mar to 2025 Mar)

Southern Maldives:

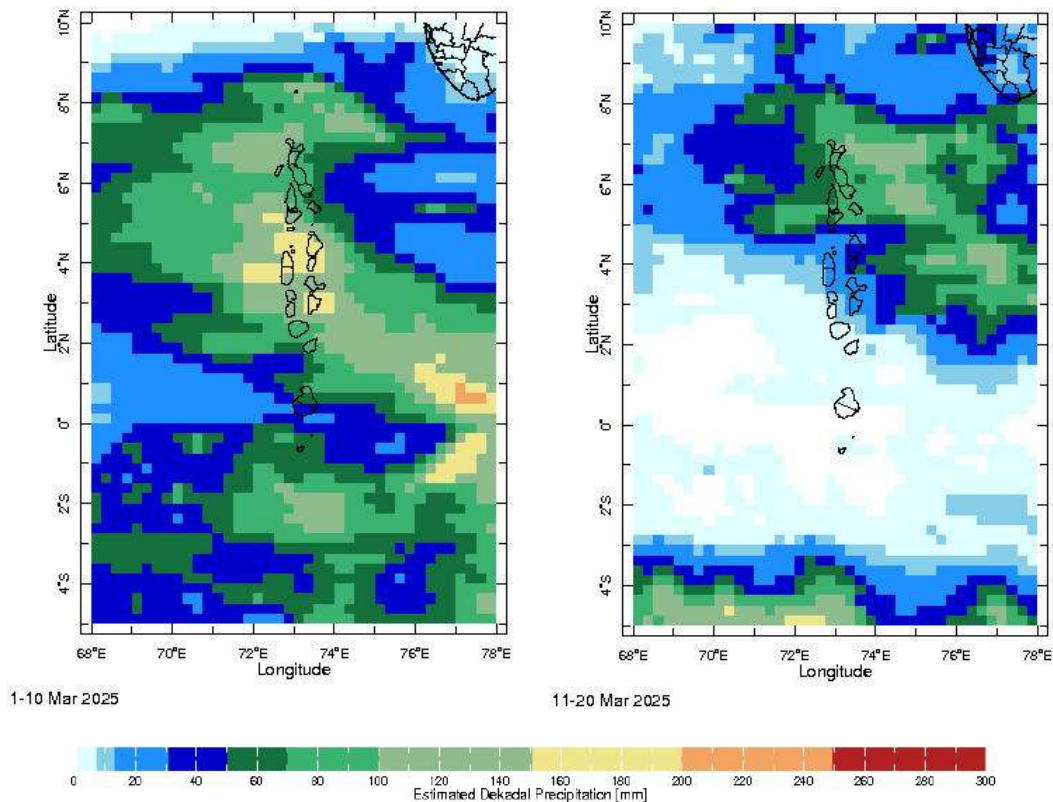


Daily Rainfall, Tmin & Tmax for the previous year in Gan station (2024 Mar to 2025 Mar)

Ocean Surface Monitoring

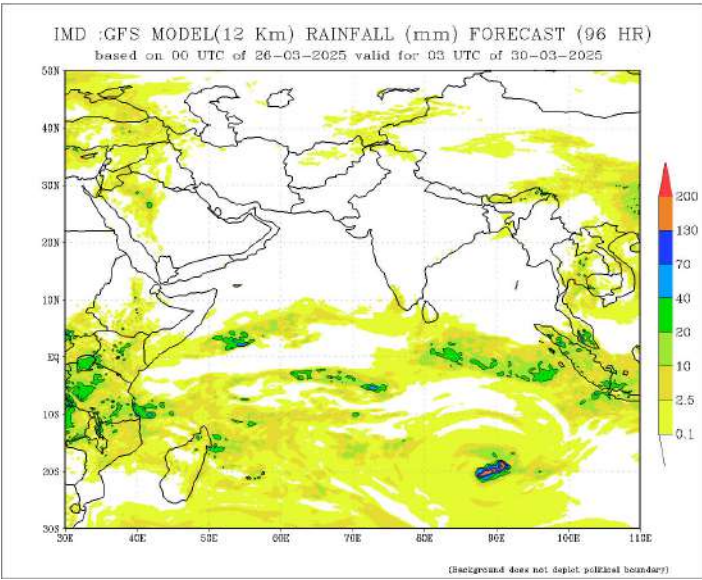
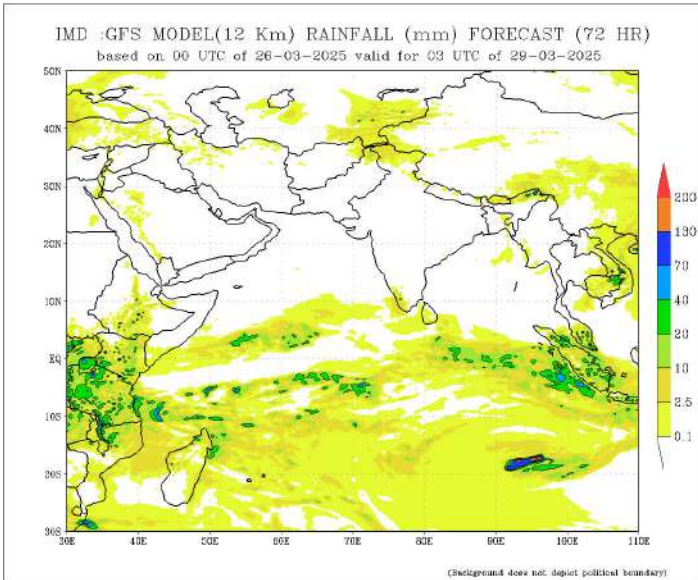
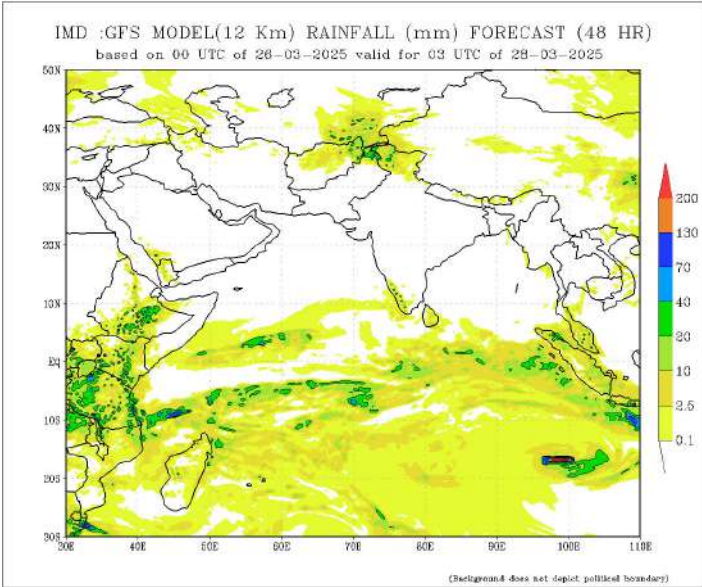
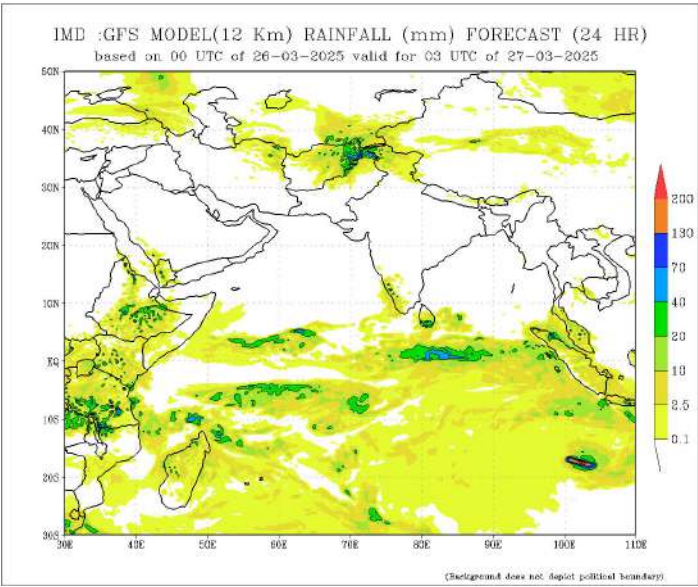


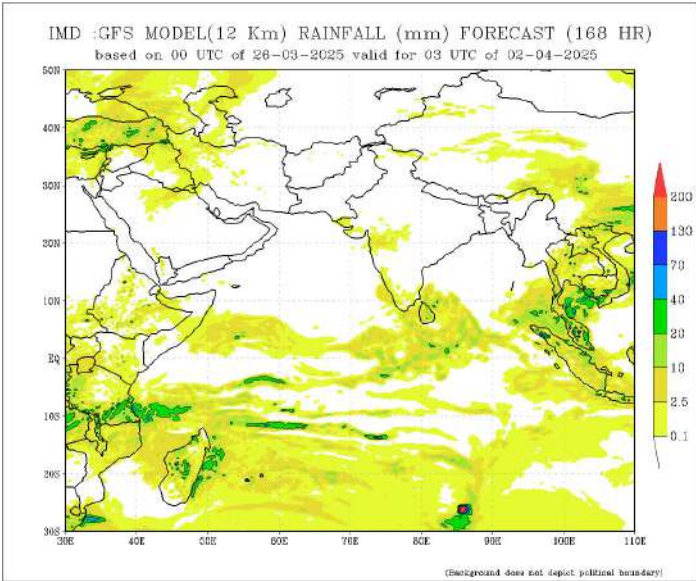
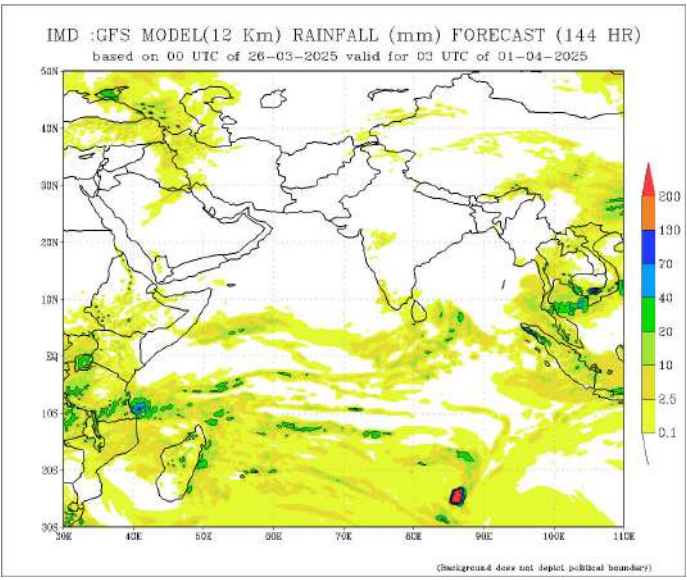
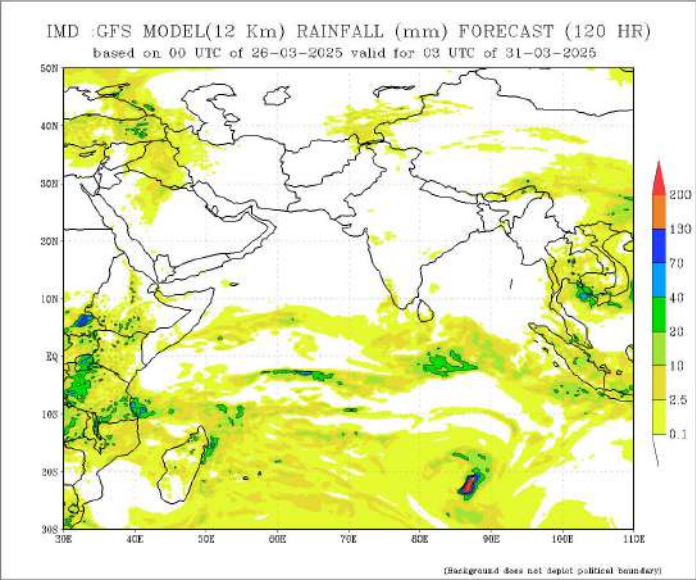
Dekadal (10 Day) Satellite Derived Rainfall Estimates



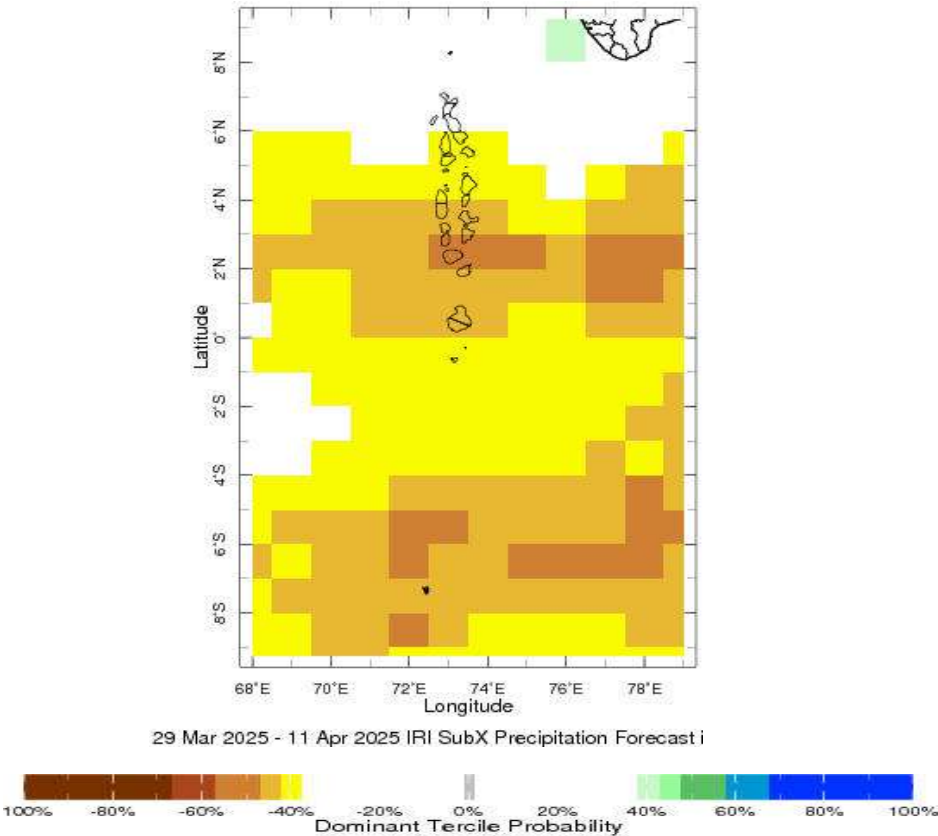
Daily Rainfall Forecast

Daily Rainfall forecasts (up to 7 days ahead) from the IMD is provided in figures below. These predictions are from the GFS (T1534) model covering the entire south Asian region.





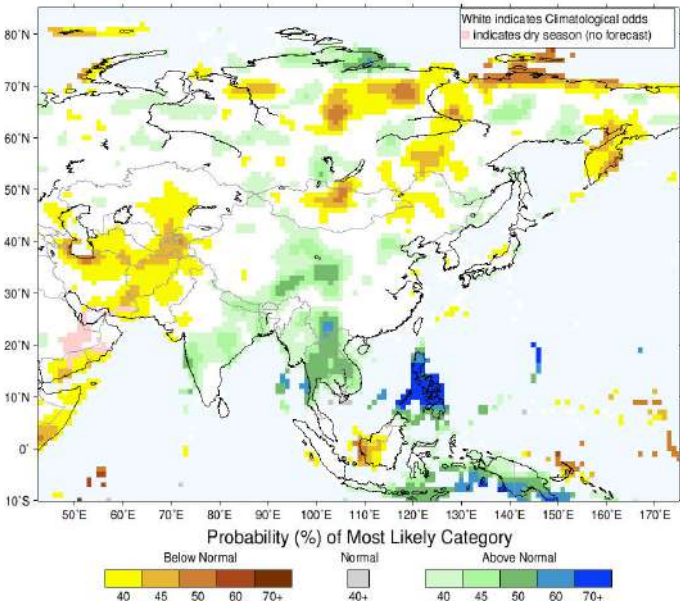
Weekly Precipitation Forecast



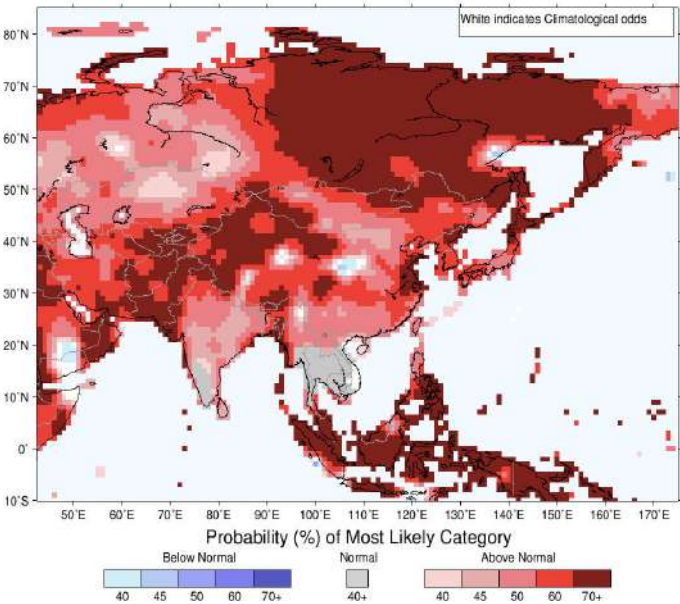
Seasonal Rainfall and Temperature Forecast

Following is the latest seasonal precipitation and temperature prediction for the next 3 months by the IRI. The color shading indicates the probability of the most dominant tercile -- that is, the tercile having the highest forecast probability. The color bar alongside the map defines these dominant tercile probability levels. The upper side of the color bar shows the colors used for increasingly strong probabilities when the dominant tercile is the above-normal tercile, while the lower side shows likewise for the below-normal tercile. The gray color indicates an enhanced probability for the near-normal tercile (nearly always limited to 40%).

IRI Multi-Model Probability Forecast for Precipitation for April-May-June 2025, Issued March 2025



IRI Multi-Model Probability Forecast for Temperature for April-May-June 2025, Issued March 2025



Subscribe to our Monthly Maldives Newsletter

email address

Subscribe

Follow @fectmv

Contact Us
email: fectmv@gmail.com
phone: (+96) 07 788010
blog: www.fectmv.blogspot.com
website: www.climate.mv

Foundation for Environment, Climate & Technology,
REM, Madhrasaadhoshuge,
Henveiru, Hadheebee Magu,
Male', 20184,
Maldives